

CATALOGUE WITH INTERACTIVE ORDER FORM

Philatelic Catalogue

OWN A PIECE OF SOUTH AFRICA'S HERITAGE
STUNNING CARDS & ENVELOPES THAT BRING OUR
RICH HISTORY AND VIBRANT CULTURE TO LIFE!

2026





About this Catalogue

Dear stamp enthusiast,

Welcome to our 2026 product catalogue. The products for sale in this catalogue mainly consist of previously issued commemorative envelopes and commemorative display cards that are in stock and available for sale.

This catalogue is fully interactive, meaning that when you view it in Adobe Acrobat Reader, you'll be able to open the bookmarks pane where you can click on any section or product to directly go to the page on which it is displayed. You can also click on the title of the envelope in the table of contents to directly go to its page.

The table of contents also serve as the order form, and it will automatically populate with your orders as you page through and enter the quantities for the products you're interested in. The fields where you can enter order quantities appears in the bottom left hand corner where each product is displayed.

This means that you have to save the PDF on your computer's hard drive, so that you can save your order quantities, and once completed, email your order to Philatelic Services for processing.

Upon returning to the table of contents/order form page, you'll be able to see the total cost of everything you have ordered, already calculated at the end of the order form. You can make changes to your order, as needed.

Customer Services: Tel: (012) 845 2815/2801/2906
Address: Private Bag X505, Pretoria, 0001
www.postoffice.co.za • sa.stamps@postoffice.co.za

Post Office 
South Africa

You need Acrobat Reader to open this document. Please click this link: [Acrobat Reader App](#) to download it to your computer or Smart devices (available on [Apple App Store](#), [Google Playstore](#) and [Android](#)). Open the What's News in Acrobat Reader and you will be able to type your information and desired quantities into the fillable fields next to the stamp issue prices, press the tab key on your keyboard and it will automatically calculate the amounts for you (alternatively tap Next or Previous on smart devices below the form in the bar above the keypad). This pdf document can then be saved onto your computer and you can email/fax to our Customer Services' contact details below.

Account number: _____
 First name: _____ Initials: _____
 Surname: _____ Title: _____
 Address: _____

 _____ Code: _____
 Tel no: (H) _____ (W) _____
 Cell/Mobile no: _____
 Email: _____

Philatelic Services
 Private Bag X505
 PRETORIA
 0001
 South Africa

Would you like to receive news about new stamp issues and relevant information? If yes: Email: SMS:

PAGE	CODE	PRODUCT DESCRIPTION	PRICE	QTY	SUB-TOTAL
2013 Envelopes					
8	PHL130109	Gift of the Givers Envelope (FDC) 8.42	R14,20		
8	PHL130209	Rescue South Africa Envelope (FDC) 8.41	R14,20		
9	PHL130309	International Year of Water Cooperation Envelope (FDC) 8.43	R36,00		
9	PHL130409	Beautiful Butterflies and Moths Envelope (FDC) 8.44	R17,00		
9	PHL130410	Beautiful Butterflies and Moths Envelope (FDC) 8.45	R17,00		
10	PHL130509	Flight of the Fish Eagle Envelope (FDC) 8.46	R16,80		
10	PHL130609	Kirstenbosch Botanical Gardens 100 Envelope (FDC) 8.47	R17,00		
10	PHL130610	Kirstenbosch Botanical Gardens 100 Envelope (FDC) 8.48	R17,00		
11	PHL130709	19th World Transplant Games Envelope (FDC) 8.49	R31,50		
11	PHL130710	19th World Transplant Games Envelope (FDC) 8.50	R31,50		
11	PHL130809	Port Elizabeth 100 Envelope (FDC) 8.51	R101,00		
11	PHL130810	Port Elizabeth 100 Envelope (FDC) 8.52	R101,00		
12	PHL130909	Rock Formations and the Cederberg Envelope (FDC) 8.53	R36,00		
12	PHL130910	Rock Formations and the Cederberg Envelope (FDC) 8.54	R36,00		
12	PHL131009	The Union Buildings 100 Envelope (FDC) 8.55	R17,00		
12	PHL131010	The Union Buildings 100 Envelope (FDC) 8.56	R17,00		
13	PHL131109	The Union Buildings 100 Envelope (FDC) 8.57	R37,50		
13	PHL131110	The Union Buildings 100 Envelope (FDC) 8.58	R37,50		

PAGE	CODE	PRODUCT DESCRIPTION	PRICE	QTY	SUB-TOTAL
13	PHL131209	Symbols of South African Cultures Envelope (FDC) 8.59	R25,50		
13	PHL131210	Symbols of South African Cultures Envelope (FDC) 8.60	R25,50		
14	PHL131309	Achievements of the South African Post Office Envelope (FDC) 8.61	R17,00		
14	PHL131509	World AIDS Day Envelope (FDC) 8.62	R18,00		
2014 Envelopes					
16	PHL140082	20 Years of Freedom and Democracy Envelope (FDC) 8.76	R8,95		
16	PHL140086	Presidential Inauguration 2014 Envelope (FDC) 8.77	R6,00		
17	PHL140109	World Design Capital 2014 Envelope (FDC) 8.63	R28,00		
17	PHL140209	The Big 5 Envelope (FDC) 8.64	R39,50		
18	PHL140309	Ukuthunga: To Sew Envelope (FDC) 8.65	R25,80		
18	PHL140409	The Plight of Critically Endangered Birds Envelope (FDC) 8.66	R38,00		
19	PHL140509	Hamilton Naki (1926 - 2005) Envelope (FDC) 8.67	R64,00		
19	PHL140609	South African Popular-music Legends Envelope (FDC) 8.68	R18,00		
19	PHL140610	South African Popular-music Legends Envelope (FDC) 8.69	R18,00		
20	PHL140709	World War I Centenary 1914-2014 Envelope (FDC) 8.70	R63,00		
20	PHL140809	South African Lighthouses Envelope (FDC) 8.71	R117,50		
21	PHL140909	South African National Parks (Part 1) Envelope (FDC) 8.72	R32,75		
21	PHL141009	People of the Post Office Envelope (FDC) 8.73	R53,00		
22	PHL141109	South African Ceramic Vessels Envelope (FDC) 8.74	R18,00		
22	PHL141110	South African Ceramic Vessels Envelope (FDC) 8.75	R18,00		
2015 Envelopes					
24	PHL150109	South African Aviation Corps Centenary Envelope FDC (8.78)	R36,25		
24	PHL150209	Animal Poaching Awareness Envelope FDC (8.79)	R22,80		
25	PHL150309	8th World Congress of Nephrology Envelope FDC (8.80)	R41,50		
25	PHL150409	International Firefighters Day Envelope FDC (8.81)	R16,20		
25	PHL150410	International Firefighters Day Envelope FDC (8.82)	R16,20		
26	PHL150609	South African Popular Music Legends Part 2 Envelope FDC (8.84)	R19,50		
26	PHL150610	South African Popular Music Legends Part 2 Envelope FDC (8.85)	R19,50		
27	PHL150709	Jelly fish in South African Waters Envelope FDC (8.86)	R35,75		
27	PHL150710	Jelly fish in South African Waters Envelope FDC (8.87)	R35,75		
28	PHL150809	14th World Forestry Congress Envelope FDC (8.88)	R43,00		

PAGE	CODE	PRODUCT DESCRIPTION	PRICE	QTY	SUB-TOTAL
28	PHL151109	World Post Day Envelope FDC (8.92)	R19,50		
2016 Envelopes					
30	PHL150909	South Africa's International Flight Routes Envelope FDC (8.89)	R6,60		
30	PHL150509	South African Bird Series - Kingfishers Envelope FDC (8.95)	R21,00		
31	PHL151009	International Year of Light Envelope FDC (8.90)	R45,00		
31	PHL151010	International Year of Light Envelope FDC (8.91)	R45,00		
32	PHL151209	South African National Parks Part 2 Envelope FDC (8.100)	R13,80		
32	PHL151210	South African National Parks Part 2 Envelope FDC (8.101)	R13,80		
32	PHL151309	South African Biosphere Reserves Envelope FDC (8.98)	R13,80		
32	PHL151310	South African Biosphere Reserves Envelope FDC (8.99)	R13,80		
33	PHL160109	Smile South Africa Envelope FDC (8.102)	R11,40		
33	PHL160209	Puppetry in South Africa Envelope FDC (8.97)	R21,00		
34	PHL160409	South African Geology Envelope FDC (8.93)	R45,00		
34	PHL160410	South African Geology Envelope FDC (8.94)	R45,00		
34	PHL160609	CITIES Cop17 Envelope FDC (8.96)	R36,60		
35	PHL160309	Contemporary South African Architecture Envelope FDC (8.105)	R21,00		
35	PHL160509	Bees For Africa Envelope FDC (8.107)	R21,00		
36	PHL160709	Wine Making In South Africa Envelope FDC (8.110)	R45,00		
36	PHL170309	South African Bird Series - Bee Eaters Envelope FDC (8.106)	R45,00		
37	PHL170509	South African National Parks Part 3 Envelope FDC (8.108)	R139,50		
37	PHL170609	Homo Naledi Envelope FDC (8.109)	R11,75		
38	PHL170709	World Post Day - Mail Sorting Machines 50 Envelope FDC (8.111)	R21,00		
38	PHL170809	50th Anniversary of First Heart Transplant Envelope FDC (8.112)	R13,30		
39	PHL170909	Helen Suzman 100 Envelope FDC (8.113)	R6,60		
2018 Envelopes					
41	PHL180109	Big 5 Envelope FDC (8.116)	R45,50		
41	PHL180609	South African National Parks Part 4 Envelope FDC (8.115)	R24,00		
42	PHL181409	President Ramaphosa Envelope FDC (8.117)	R7,20		
2019 Envelopes					
44	PHL190409	Famous South African Diamonds Envelope FDC (8.119)	R52,00		
44	PHL190410	Famous South African Diamonds Envelope FDC (8.120)	R52,00		
45	PHL190709	South African Social Security Agency (SASSA) Envelope FDC (8.124)	R50,60		

PAGE	CODE	PRODUCT DESCRIPTION	PRICE	QTY	SUB-TOTAL
2020 Envelopes and CDCs					
47	PHL180710	Stars & Constellations Envelope FDC (8.129)	R28,75		
47	PHL180709	Stars & Constellations Envelope FDC (8.128)	R28,75		
48	PHL180809	South African Bird Series - Woodpeckers Envelope FDC (8.122)	R59,50		
48	PHL190509	South African Popular Music Legends Part 3 Envelope FDC (8.123)	R19,65		
49	PHL200109	South African Air Force 100 Envelope FDC (8.134)	R32,70		
49	PHL200110	South African Air Force 100 Envelope FDC (8.135)	R32,70		
50	PHL200209	South African Endangered Species Part 1 Envelope FDC (8.130)	R133,20		
50	PHL200210	2020 Endangered Species - CDC 8.001	R130,20		
51	PHL200310	2020 Springbok - CDC 8.002	R7,90		
51	PHL190809	President Ramaphosa Envelope FDC (8.125)	R10,55		
2025–2026 Commemorative Display Cards					
53	PHL250110	IZIKO South African Museum Bi-centenary - CDC 8.004	R151,30		
53	PHL250111	IZIKO South African Museum Bi-centenary - CDC 8.005	R151,30		
53	PHL260110	Critically Endangered Vultures - Vultures for Africa - CDC 8.006	R73,75		
ORDER HANDLING FEE					R30,00
TOTAL					

Method of Payment

VISA MASTERCARD EFT

Credit card no:

Expiry date of credit card: YYYY MM

CVC no. (Last 3 numbers given on back of credit card)

Signature: _____

Date: YYYY MM DD ID no:

Regretfully, only credit cards mentioned above are acceptable at this stage. Please call Customer Service Centre to explore other methods of payment.

PLEASE NOTE:

Clients are advised against forwarding bank notes through the mail as Philatelic Services cannot be held responsible for any losses incurred in this manner.

Payment may be made directly into our bank account. Please email proof of payment to sa.stamps@postoffice.co.za after making a deposit.

Banking details for Philatelic Services are:

Standard Bank

Account No. 010547088

Branch Code: 010045

Branch: Pretoria

Reference: Account number or initials and surname.

Swift code for international clients: **SBZAJJ**

PLEASE NOTE: PRICES ARE SUBJECT TO CHANGE WITHOUT NOTICE. ALL PRODUCTS AVAILABLE WHILE STOCKS LAST.

Send Order Form to: Philatelic Services, Private Bag X505, Pretoria, 0001 • Tel: +27 12 845 2815/2801/2906

Save completed order on your hard drive and email to sa.stamps@postoffice.co.za

2013 Envelopes



Gift of the Givers

Envelope (First Day Cover)

Issue date:

22 February 2013

Founded in 1992 by Dr Imtiaz Sooliman, Gift of the Givers Foundation is a South African humanitarian organisation providing disaster relief locally and globally.

It has delivered over R450 million in aid across 32 countries, offering medical, rescue, food and water support.

Assistance is unconditional, inclusive and prioritises vulnerable communities with dignity. It serves all regardless of background or belief.

ORDER
QUANTITY

R14.20
Serviced



▲ Product Code: PHL130109 Serviced FDC Number 8.42

Rescue South Africa

Envelope (First Day Cover)

Issue date:

22 February 2013

Rescue South Africa, founded in 2000, is an NGO focused on building urban search and rescue capacity in South Africa and the SADC region.

Its multidisciplinary teams respond to disasters like earthquakes, floods and crashes locally and abroad.

Members face extreme conditions to save lives. Internationally recognised, the team assisted in Japan's tsunami, earning praise for bravery, rapid response and humanitarian solidarity.

ORDER
QUANTITY

R14.20
Serviced



▲ Product Code: PHL130209 Serviced FDC Number 8.41

International Year of Water Cooperation

Envelope (First Day Cover)

Issue date:

20 March 2013

Water is essential for life, health and sustainable development, yet only 1% of Earth's water is freshwater.

World Water Day, first held on 22 March 1993, promotes awareness and responsible management. South Africa faces water scarcity due to low, uneven rainfall and climate change, highlighting the need for conservation, cooperation and improved water resource management worldwide.



▲ Product Code: PHL130309 **Serviced FDC** Number 8.43

ORDER QUANTITY

R36.00
Serviced

Beautiful Butterflies and Moths

Envelope (First Day Cover)

Issue date:

10 May 2013

Butterflies captivate through their beauty, behaviour and ecological importance. Widely studied and admired, they enrich outdoor experiences and can be observed almost anywhere. Experts like Steve Woodhall highlight their fascinating, often little-understood lives and promote their conservation. Globally diverse, South Africa hosts about 670 species, some endangered or extinct, making awareness and protection of these insects increasingly important.



▲ Product Code: PHL130409 **Serviced FDC** Number 8.44



▲ Product Code: PHL130410 **Serviced FDC** Number 8.45

ORDER QUANTITY

ORDER QUANTITY

R17.00
FDC 8.44
Serviced

R17.00
FDC 8.45
Serviced

Flight of the Fish Eagle

Envelope (First Day Cover)

Issue date:

14 June 2013

The African Fish Eagle, famed for its distinctive call and hunting dives, features on South Africa's first moving-image stamp using lenticular technology.

This technique combines lenses and layered images to create motion or 3D effects.

A widespread raptor, the African Fish Eagle symbolises several African nations and is the national bird of Zambia and Zimbabwe. Its scientific name, *Haliaeetus vocifer**, reflects its loud, characteristic call.

ORDER QUANTITY
R16.80 Serviced



▲ Product Code: PHL130509 **Serviced FDC** Number 8.46

Kirstenbosch Botanical Gardens Centenary

Envelope (First Day Cover)

Issue date:

1 July 2013

Kirstenbosch National Botanical Garden is one of the world's great botanical gardens and a UNESCO-listed attraction. Established in 1913, it celebrated 100 years of conserving South Africa's indigenous flora in 2014. Home to over 7,000 species, including rare plants, it forms part of a vast nature reserve within the Cape Floristic Region. The garden showcases diverse fynbos and historically significant plant species linked to its rich heritage.

ORDER QUANTITY	ORDER QUANTITY
R17.00 FDC 8.47 Serviced	R17.00 FDC 8.48 Serviced



▲ Product Code: PHL130609 **Serviced FDC** Number 8.47



▲ Product Code: PHL130610 **Serviced FDC** Number 8.48

19th World Transplant Games

Envelope (First Day Cover)

Issue date:

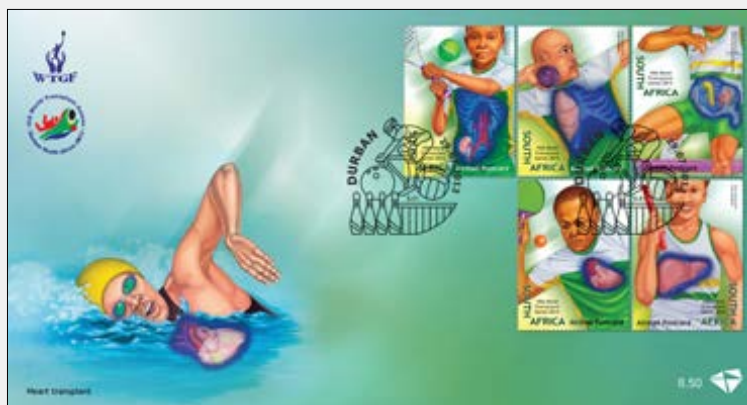
29 July 2013

The World Transplant Games 2013 were held in Durban from 28 July to 4 August, celebrating the human spirit and organ transplant success. The South African Transplant Sports Association (SATSA), founded in 1994 as TGASA, promoted active lifestyles for transplant recipients. South African teams competed in every Games since 1995. SATSA organised Summer and Winter sports, supported donor awareness, and, through the WTGF, helped increase organ donation rates while showcasing the benefits of transplantation globally.

ORDER QUANTITY	ORDER QUANTITY
R31.50 FDC 8.49 Serviced	R31.50 FDC 8.50 Serviced



▲ Product Code: PHL130709 Serviced FDC Number 8.49



▲ Product Code: PHL130710 Serviced FDC Number 8.50

Port Elizabeth Centenary

Envelope (First Day Cover)

Issue date:

26 July 2013

Port Elizabeth, the largest city in the Eastern Cape and a major seaport, was established by British settlers in 1820 and named in 1820 by Sir Rufane Donkin for his late wife, Elizabeth.

Originally Algoa Bay, it forms part of the Nelson Mandela Metropolitan Municipality. Known as the "Friendly City," it offers beaches, wildlife, historical sites, museums, and an oceanarium, making it a key industrial and tourist destination.

ORDER QUANTITY	ORDER QUANTITY
R101.00 FDC 8.51 Serviced	R101.00 FDC 8.52 Serviced



▲ Product Code: PHL130809 Serviced FDC Number 8.51



▲ Product Code: PHL130810 Serviced FDC Number 8.52

Rock Formations and the Cederberg

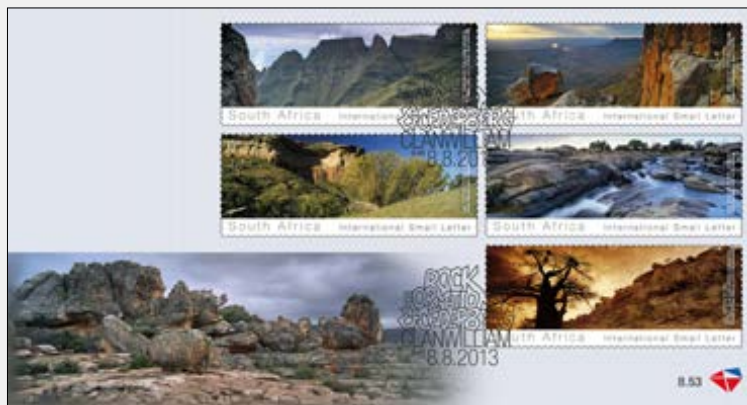
Envelope (First Day Cover)

Issue date:

8 August 2013

South Africa's diverse landscapes feature remarkable rock formations of unique geological importance. Rocks form through three processes: sedimentary rocks from compacted deposits like sandstone and limestone; igneous rocks from cooled lava, such as granite and basalt; and metamorphic rocks from heat and pressure, like quartzite and gneiss. Examples include the Drakensberg Mountains, Bushveld Complex, and the folded Cape mountains, showcasing millions of years of geological activity.

ORDER QUANTITY	ORDER QUANTITY
R36.00 FDC 8.53 Serviced	R36.00 FDC 8.54 Serviced



▲ Product Code: PHL130909 Serviced FDC Number 8.53



▲ Product Code: PHL130910 Serviced FDC Number 8.54

The Union Buildings Centenary

Envelope (First Day Cover)

Issue date:

12 December 2013

The Union Buildings in Pretoria, designed by Sir Herbert Baker and completed in 1913, are South Africa's iconic architectural masterpiece.

Perched on Meintjieskop, they overlook the city and terraced gardens. Originally housing the Public Service, they were the country's largest building.

Today, they serve as the seat of government, the President's offices, and a national monument.

ORDER QUANTITY	ORDER QUANTITY
R17.00 FDC 8.55 Serviced	R17.00 FDC 8.56 Serviced



▲ Product Code: PHL131009 Serviced FDC Number 8.55



▲ Product Code: PHL131010 Serviced FDC Number 8.56

The Union Buildings Centenary

Envelope (First Day Cover)

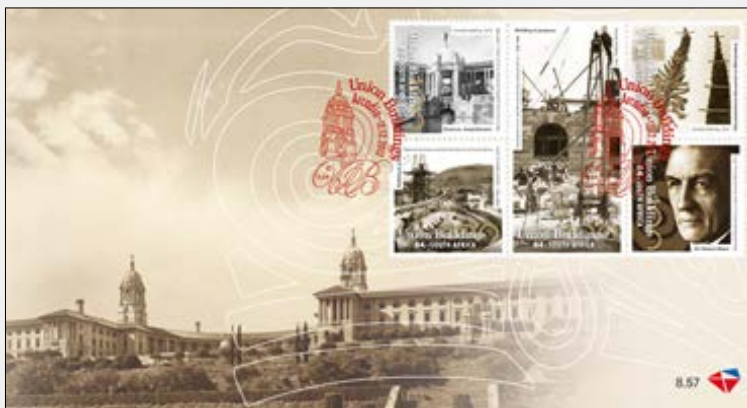
Issue date:

12 December 2013

The Union Buildings in Pretoria serve as the seat of government, the President's offices, and is a national monument.

Symbolic of democracy, they hosted Nelson Mandela's 1994 inauguration and the 1956 women's march. Built of sandstone with semi-circular wings, the 275m-long structure features terraces, courtyards, and the Delville Wood war memorial. Constructed by 1,265 workers, it used local granite, freestone, and over 14 million bricks.

ORDER QUANTITY	ORDER QUANTITY
R37.50 FDC 8.57 Serviced	R37.50 FDC 8.58 Serviced



▲ Product Code: PHL131109 Serviced FDC Number 8.57



▲ Product Code: PHL131110 Serviced FDC Number 8.58

Symbols of South African Cultures

Envelope (First Day Cover)

Issue date:

20 September 2013

South Africa's rich cultural history spans thousands of years, expressed through objects, clothing, and artefacts that convey traditions, beliefs, and social customs. Each stamp features items from cultural groups, decorated with unique patterns and colours with specific meanings. Symbols, like the 75,000-year-old Blombos ochre – the world's earliest known symbol – communicated ideas and stories, demonstrating the enduring significance of South Africa's symbolic and artistic heritage.

ORDER QUANTITY	ORDER QUANTITY
R25.50 FDC 8.59 Serviced	25.50 FDC 8.60 Serviced



▲ Product Code: PHL131209 Serviced FDC Number 8.59



▲ Product Code: PHL131210 Serviced FDC Number 8.60

Achievements of the South African Post Office

Envelope (First Day Cover)

Issue date:

9 October 2013

The South African Post Office, tracing back over 500 years to Mossel Bay, has played a vital role in national communications. Today, it provides postal addresses to over 10 million households, including informal settlements and rural areas, delivers Hybrid Mail and ePostal services, supports financial inclusion via Postbank, offers access to education through Unisa, and invests in the environment by planting thousands of trees, combining innovation with social and community development.

ORDER
QUANTITY

R17.00
Serviced



▲ Product Code: PHL131309 Serviced FDC Number 8.61

World AIDS Day

Envelope (First Day Cover)

Issue date:

29 November 2013

The 25th World AIDS Day on 1 December 2013 aimed to raise awareness of AIDS, promote solidarity, and highlight treatment, prevention, and care.

The Keiskamma Guernica, featured on this miniature sheet, was created by the Keiskamma Trust in the Eastern Cape. Led by Carol Hofmeyr with local women, the large artwork depicted the slow devastation of AIDS in rural communities, combining embroidery, felt, and traditional materials to honour resilience, grief, and hope.

ORDER
QUANTITY

R18.00
Serviced



▲ Product Code: PHL131509 Serviced FDC Number 8.62

2014 Envelopes



20 Years of Freedom and Democracy

Envelope (First Day Cover)

Issue date:

15 August 2014

In 2014, South Africa celebrated 20 years of freedom and democracy, reflecting on progress since the first democratic elections on 27 April 1994 and Nelson Mandela's release in 1990. Mandela's legacy embodies ubuntu, integrity, and justice.

The SA Post Office has achieved milestones such as issuing stamps featuring the Constitution, Coat of Arms, Mandela Bridge, SumbandilaSat, and World Cup stadiums. They have also introduced innovations like address expansion, eBusiness solutions, environmental initiatives, Mzansi accounts, and expanded third-party services.

ORDER
QUANTITY

R8.95
Serviced



▲ Product Code: PHL140082 Serviced FDC Number 8.76

Presidential Inauguration 2014

Envelope (First Day Cover)

Issue date:

15 August 2014

On 24 May 2014, President Jacob Zuma was inaugurated as South Africa's fifth democratically elected president, pledging to serve with humility, dedication, courtesy, and ubuntu.

He acknowledged the long and demanding road ahead but expressed determination to succeed. To mark this historic event, the South African Post Office issued a special commemorative stamp and envelope on 15 August 2014.

ORDER
QUANTITY

R7.00
Serviced



▲ Product Code: PHL140086 Serviced FDC Number 8.77

World Design Capital 2014

Envelope (First Day Cover)

Issue date:

28 February 2014

Cape Town, South Africa's arts and culture hub, was named World Design Capital 2014, the first African city to earn this title.

Awarded by the International Council of Societies of Industrial Design (Icsid), the designation recognises the city's use of design for social, cultural, and economic development. With the theme "Live Design. Transform Life," Cape Town hosted global events, showcased creative talent, and highlighted design as a tool for sustainability, innovation, and urban transformation, boosting its international profile.

ORDER
QUANTITY

R28.00
Serviced



▲ Product Code: PHL140109 Serviced FDC Number 8.63

The Big 5

Envelope (First Day Cover)

Issue date:

3 May 2014

The Big Five – lion, leopard, buffalo, rhino, and elephant – remain iconic in South Africa, popular with tourists and stamp collectors.

They have appeared on stamps in various styles since 1996, including photography, cartoons, and artwork.

The 2014 issue features illustrations from the 2013 South African Post Office postcard competition: oil paintings by first-prize winner Marius Trollip and watercolours by second-prize winner Annetjie Esterhuizen, launched on 9 May with stamps and postcards.

ORDER
QUANTITY

R39.50
Serviced



▲ Product Code: PHL140209 Serviced FDC Number 8.64

Ukuthunga: To Sew

Envelope (First Day Cover)

Issue date:

30 May 2014

On Pro Nobis farm near Hluhluwe, Kwa-Zulu-Natal, Tunga Embroidery Studio has developed rural Zulu women's artistic talent since 2003. Founded by Beulah Meintjes after discovering Goodness Basolivumeleni's embroidery, the studio grew to 30 artists, many sole providers.

The 2014 miniature sheet and commemorative envelope feature works by Thandi Sithole, Goodness, and Phiwan Ngubani, including a pregnant black rhino, with raised silk-screen printing replicating the texture of embroidered threads.

ORDER
QUANTITY

R25.80
Serviced



▲ Product Code: PHL140309 Serviced FDC Number 8.65

The Plight of Critically Endangered Birds

Envelope (First Day Cover)

Issue date:

1 September 2014

"Critically endangered" describes species at extremely high risk of extinction in the wild. BirdLife South Africa lists the Damara Tern, Leach's Storm-Petrel, Taita Falcon, Tristan Albatross, and White-winged Flufftail as regionally critically endangered.

Over 7,300 stamps featuring Southern African birds have been issued, including South African coastal and seabirds (2009), grassland birds (2010), forest birds (2011), sunbirds (2012), and the Flight of the Fish Eagle (2013).

ORDER
QUANTITY

R38.00
Serviced



▲ Product Code: PHL140409 Serviced FDC Number 8.66

Hamilton Naki (2005 – 1926)

Envelope (First Day Cover)

Issue date:

26 June 2014

Hamilton Naki, a self-taught surgical assistant, began as a gardener and became an “extraordinary teacher and surgical craftsman.”

To honour his contributions to organ transplant research at UCT’s Surgical Research Centre, the South African Post Office issued a miniature sheet, two stamps, and a commemorative envelope, featuring Siphho Gwala’s artwork. Naki famously said he “stole with his eyes” to learn surgery, impressing Dr Christiaan Barnard.



▲ Product Code: PHL140509 **Serviced FDC** Number 8.67

ORDER
QUANTITY

R64.00
Serviced

South African Popular-music Legends

Envelope (First Day Cover)

Issue date: 3 July 2014

“Music can change the world because it can change people,” said Bono. In South Africa, music has united communities and shaped perceptions. The stamps feature popular-music legends who pioneered distinct South African styles, including Miriam Makeba, Lucky Dube, Brenda Fassie, James Phillips, Johannes Kerckorrel, Solomon Linda, Spokes Mashiyane, Simon Nkabinde, Kippie Moeketsi, and Taliep Petersen. Their innovative work spans genres like jazz, reggae, Afropop, Mbaqanga, Kwêla, Voëlvry, and Ghoema, influencing generations locally and internationally.



▲ Product Code: PHL140609 **Serviced FDC** Number 8.68

ORDER
QUANTITY

ORDER
QUANTITY

R17.00
FDC 8.68
Serviced

R17.00
FDC 8.69
Serviced



▲ Product Code: PHL140610 **Serviced FDC** Number 8.69

World War I Centenary 2014–1914

Envelope (First Day Cover)

Issue date: 28 July 2014

2014 marked 100 years since World War I, which lasted from 28 July 1914 to 11 November 1918 and caused over 37 million casualties. South Africa joined the Allies on 8 September 1914, losing about 19 000 men.

Three se-tenant stamp sets commemorate South Africa's involvement: the German campaigns under Generals Botha and Smuts, the Cape Corps and SS Mendi tragedy in Palestine, and heroic battles at Delville and Marrières Woods, highlighting sacrifice and evolving warfare.

ORDER QUANTITY
R63.00 Serviced



▲ Product Code: PHL140709 Serviced FDC Number 8.70

South African Lighthouses

Envelope (First Day Cover)

Issue date:

20 August 2014

For 400 years, sailing around South Africa's southern tip was perilous, with 2 000 shipwrecks along the 3 000 km coast. In the 1800s, the first lighthouses were built; by 2014, 45 remained.

A set of five stamps featured historic lighthouses, including Green Point, Cape Agulhas, Robben Island, Bird Island, Umhlanga Rocks, and Slangkoppunt. Fully automated, some are national monuments.

The stamps include glow-in-the-dark ink, highlighting these beacons that guided ships safely along the coast.

ORDER QUANTITY
R117.50 Serviced



▲ Product Code: PHL140809 Serviced FDC Number 8.71

South African National Parks (Part 1)

Envelope (First Day Cover)

Issue date:

17 September 2014

South Africa's 21 national parks, including Kruger and Kgalagadi Transfrontier Park, represented a priceless heritage. To celebrate this, the South African Post Office issued a four-part stamp series from 2014 to 2017, starting with five stamps 2014 featuring photos by Koos van der Lende. Managed by SANParks, the parks showcased diverse landscapes, wildlife, and cultural heritage. The first set highlighted Addo Elephant, Augrabies Falls, Karoo, Kgalagadi, and Kruger National Parks.

ORDER QUANTITY
R32.75 Serviced



▲ Product Code: PHL140909 **Serviced FDC** Number 8.72

People of the Post Office

Envelope (First Day Cover)

Issue date:

9 October 2014

To mark World Post Day on 9 October, the South African Post Office issued a set of five stamps and a commemorative envelope in 2014, honouring behind the scenes staff working to deliver mail.

The stamps featured hands performing postal tasks across retail offices, mail centres, sorting, cancellation, insured parcels, consolidation, and track-and-trace operations.

A unique die-cut design allowed the stamp sheet to fold into a small parcel, symbolising the hidden work behind the scenes.

ORDER QUANTITY
R53.00 Serviced



▲ Product Code: PHL141009 **Serviced FDC** Number 8.73

South African Ceramic Vessels

Envelope (First Day Cover)

Issue date:

13 November 2014

The South African Post Office issued a set of stamps featuring South African ceramics from Iziko Museums. Illustrated by Sascha Lipka, the stamps highlighted a range of works from pre-colonial Khoekhoe vessels, traditional ukhamba beer vessels, and modern stoneware and earthenware by artists such as Ephraim Ziqubu, Rebecca Matibe, Clive Sithole, Andile Dyalvane, Hyme Rabinowitz, and Ardmore Studio, as well as commemorative envelopes celebrating traditional beer vessels and Ubuntu bowls.

ORDER QUANTITY	ORDER QUANTITY
R18.00 FDC 8.74 Serviced	R18.00 FDC 8.75 Serviced

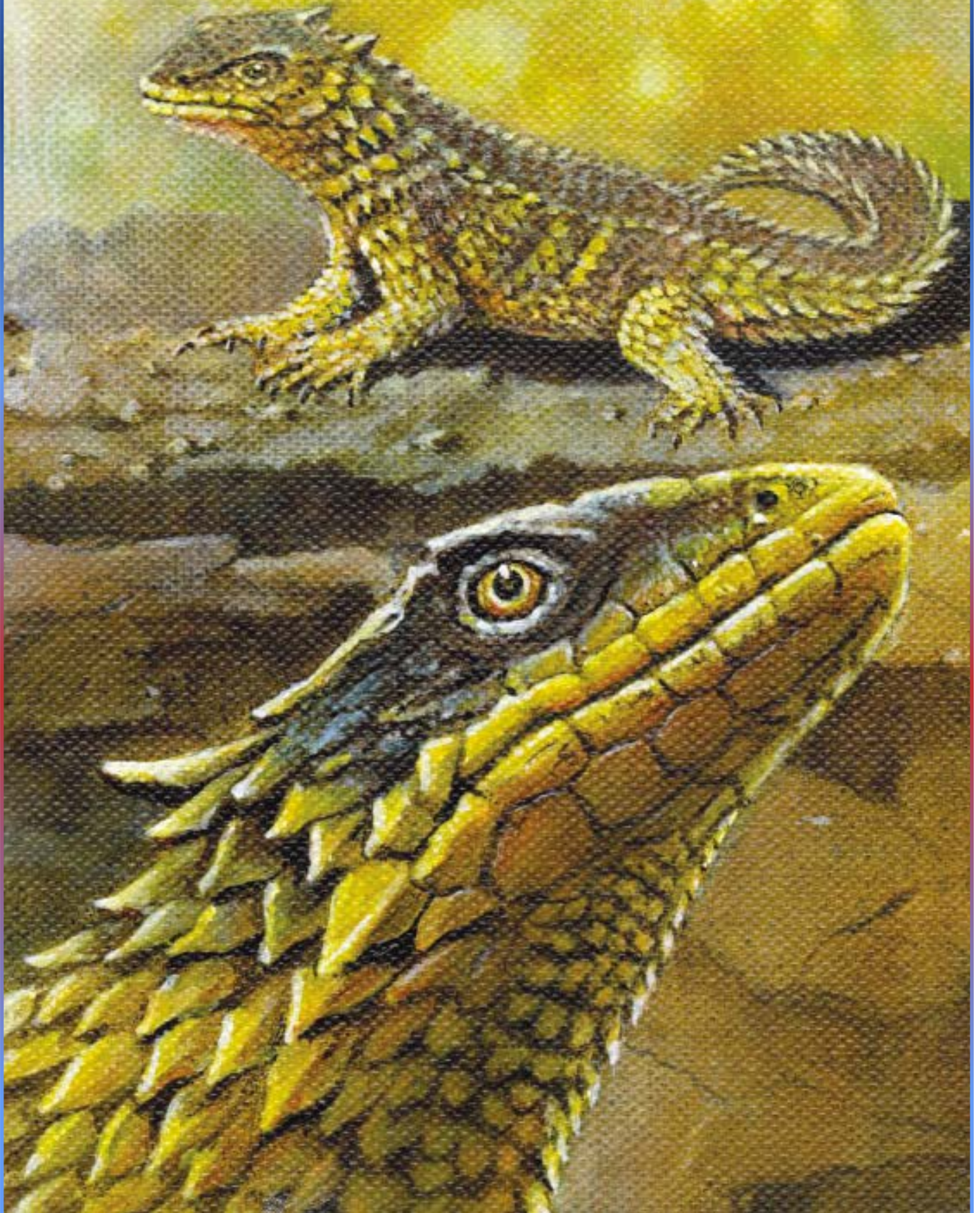


▲ Product Code: PHL141109 Serviced FDC Number 8.74



▲ Product Code: PHL141110 Serviced FDC Number 8.75

2015 Envelopes



South African Aviation Corps Centenary

Envelope (First Day Cover)

Issue date:

5 February 2015

The formation of the South African Aviation Corps (SAAC) dates back to a time when flying was still in its infancy. Growing into a formidable force, it played a major role in the South West Africa Campaign during World War I, and is considered to be the forerunner of the South African Air Force.

ORDER
QUANTITY

R36.25
Serviced



▲ Product Code: PHL150109 Serviced FDC Number 8.78

Animal Poaching Awareness

Envelope (First Day Cover)

Issue date:

3 March 2015

Animal poaching is an increasing global phenomenon. In Southern Africa, poaching has increased at an alarming rate. The situation has become so bad that local newspapers have labelled our national wildlife parks "killing fields".

ORDER
QUANTITY

R22.80
Serviced



▲ Product Code: PHL150209 Serviced FDC Number 8.79

8th World Congress of Nephrology

Envelope (First Day Cover)

Issue date:

3 April 2015

This event took place in Cape Town from 3 to 7 April 2015. Nephrology is a branch of medical science that deals with the study of the normal working of the kidneys, as well as its diseases. The kidneys are vital for a healthy life. Their complex network of blood vessels and intricate network of tubes and tubules cleanse the blood of waste products and excess water.



▲ Product Code: PHL150309 **Serviced FDC** Number 8.80

ORDER
QUANTITY

R41.50
Serviced

International Firefighters Day

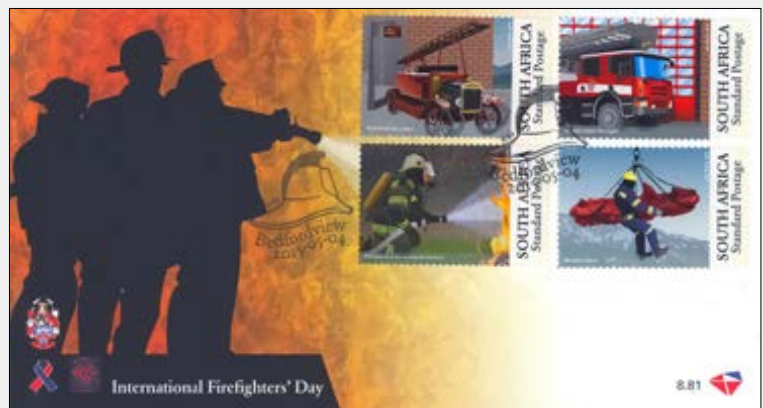
Envelope (First Day Cover)

Issue date:

4 May 2015

International Firefighters' Day is a time when people worldwide recognise and honour the sacrifices made by firefighters to ensure that their communities and environments are safe.

The role of firefighters – our real-life action heroes – is to protect lives and property. No matter what country you live and work in, firefighters work together against one common enemy – fire. But firefighters are not only trained to put out fires; they are also trained as paramedics and rescuers



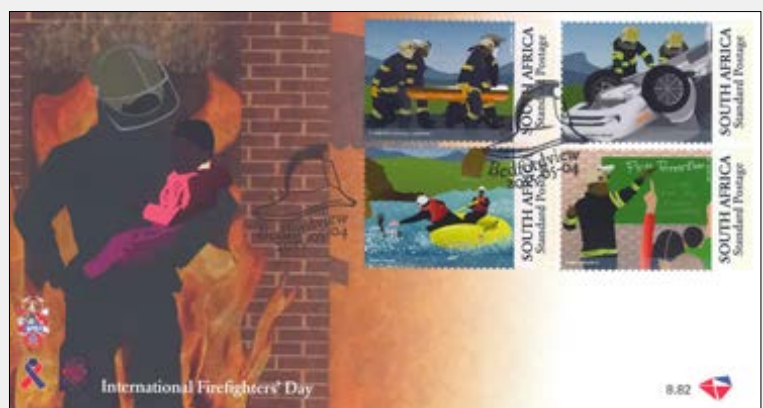
▲ Product Code: PHL150409 **Serviced FDC** Number 8.81

ORDER
QUANTITY
FDC 8.81

ORDER
QUANTITY
FDC 8.82

R16.20
Serviced

R16.20
Serviced



▲ Product Code: PHL150410 **Serviced FDC** Number 8.82

SA Popular Music Legends Part 2

Envelope (First Day Cover)

Issue date:

2 July 2015

Music is the thread that runs through the fabric of South African society; it rings out from our townships, our cities, sports stadiums, theatres and homes. The musicians chosen for the stamps are as representative as possible of our society, covering the most important or popular musical genres. The musician stamps on this envelope depict Margaret Singana, Phuzushukela (John Bhengu), Paul Ndlovu, Moses Molelekwa and Gé Korsten.

ORDER
QUANTITY

R19.50
Serviced



▲ Product Code: PHL150609 Serviced FDC Number 8.84

SA Popular Music Legends Part 2

Envelope (First Day Cover)

Issue date:

2 July 2015

"Music can change the world because it can change people," said well-known Irish singer-songwriter and musician, Bono. This is especially true in Africa, where music is an integral part of everyday life. South Africa with its melting pot of cultures has produced a rich crop of highly talented popular-music legends. The musician stamps on this envelope depict Dolly Rathebe, Zim Ngqawana, Dan Hill, Busi Mhlongo and Chris Bignaut.

ORDER
QUANTITY

R19.50
Serviced



▲ Product Code: PHL150610 Serviced FDC Number 8.85

Jelly fish in South African Waters

Envelope (First Day Cover)

Issue date:

12 August 2015

Jellyfish, also known as jellies and sea jellies, are boneless animals that float freely through the world's oceans.



▲ Product Code: PHL150709 Serviced FDC Number 8.86

ORDER
QUANTITY

R35.75
Serviced

Jelly fish in South African Waters

Envelope (First Day Cover)

Issue date:

12 August 2015

Despite their name, they are not actually fish, but are classed in a group of their own as they are unlike any other animal on Earth. The body of the jellyfish is made up of a non-living jellylike substance called *mesoglea*.



▲ Product Code: PHL150710 Serviced FDC Number 8.87

ORDER
QUANTITY

R35.75
Serviced

14th World Forestry Congress

Envelope (First Day Cover)

Issue date:

7 September 2015

Forests are essential to life on our planet and are a source of income and livelihood to many. They provide mitigation and adaption to climate change, adequate supplies of fresh water, biodiversity in nature, food and shelter for humans and animals. Yet this life-sustaining resource is under unprecedented pressure from people, climate and competing socio-economic demands.

The World Forestry Congress was hosted by the South African Government, in collaboration with the Food and Agriculture Organization (FAO), and took place in Durban from 7 to 11 September 2015.

ORDER
QUANTITY

R43.00
Serviced



▲ Product Code: PHL150809 Serviced FDC Number 8.88

World Post Day

Envelope (First Day Cover)

Issue date:

9 October 2015

The purpose of World Post Day is to create awareness of the role of the postal sector in the lives of people and business. The history of mail in Southern Africa can be traced back over 500 years. During 2015, various anniversaries relating to postal delivery will be celebrated. These include 200 years since the mail boat service was introduced; 110 years since the Cullinan diamond was posted using ordinary mail; 20 years since the first Retail Postal Agency was opened, and 70 years since the start of the Springbok Air Service.

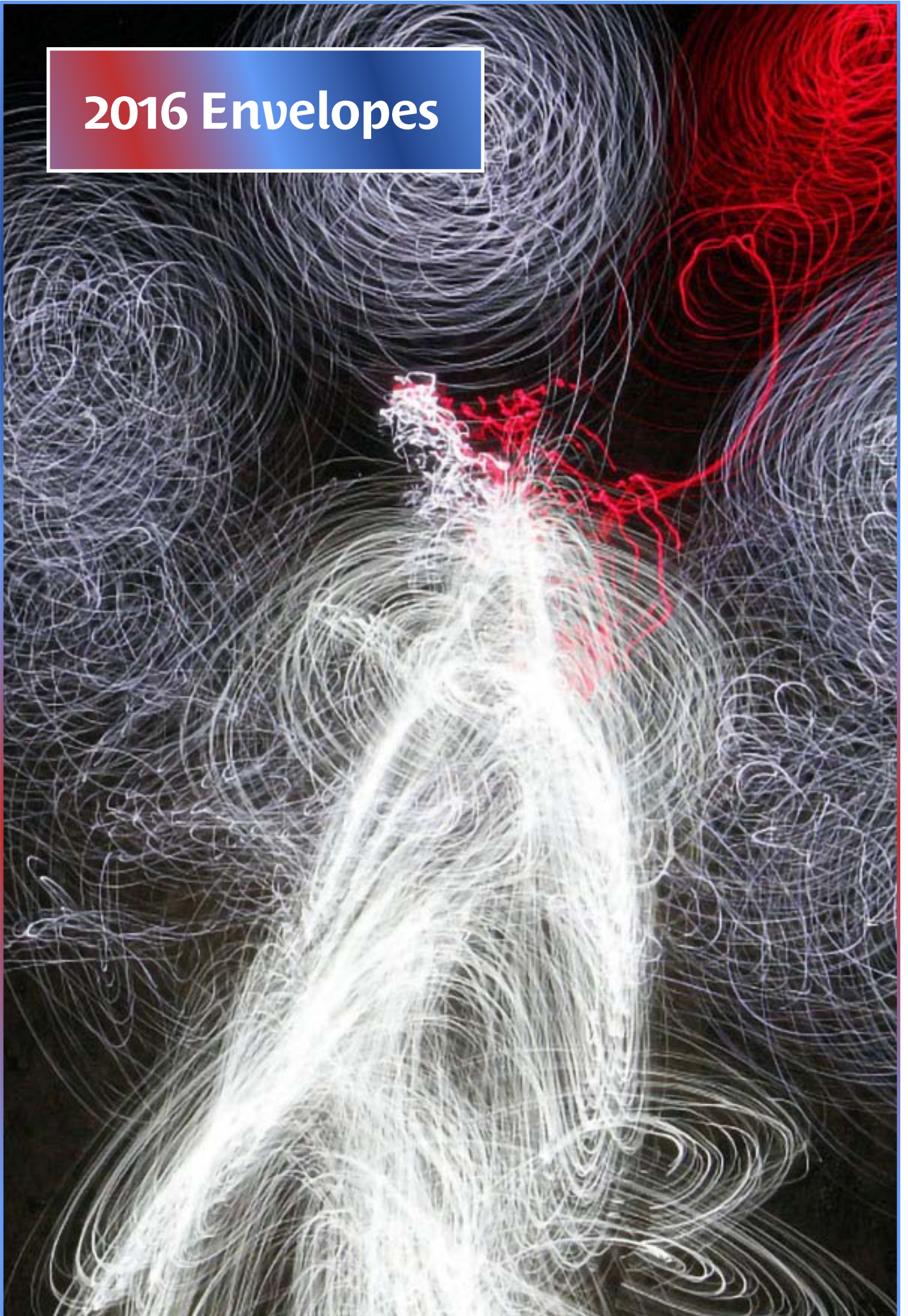
ORDER
QUANTITY

R19.50
Serviced



▲ Product Code: PHL151109 Serviced FDC Number 8.92

2016 Envelopes



South Africa's International Flight Routes

Envelope (First Day Cover)

Issue date:

2 December 2016

SAA offers the most comprehensive portfolio of routes in Africa and is the leading carrier on the continent winning the 'Best Airline in Africa' Award in the regional category for thirteen consecutive years and the winner of 'Service Excellence Africa' for three years. 2016 mared the 82nd anniversary of the airline – a proud achievement indeed.



▲ Product Code: PHL150909 Serviced FDC Number 8.89

ORDER
QUANTITY

R6.60
Serviced

SA Bird Series - Kingfishers

Envelope (First Day Cover)

Issue date:

31 August 2016

With their distinctive dagger-like bills, and striking plumage, kingfishers are among the world's most beautiful birds. Of the 87 species in the world, 16 occur in Africa, ten of which are found in Southern and East Africa. Kingfishers are a group of birds with brightly coloured or boldly patterned plumage, in the order *Coraciiformes*.



▲ Product Code: PHL150509 Serviced FDC Number 8.95

ORDER
QUANTITY

R21.00
Serviced

International Year of Light

Envelope (First Day Cover)

Issue date:

14 September 2016

"I will love the light for it shows me the way, yet I will endure the darkness for it shows me the stars." - Og Mandino

In proclaiming an international year focusing on the topic of light science and its applications, the UN wanted to raise global awareness about how light-based technologies promote sustainable development and provide solutions to global challenges in energy, education, agriculture and health.

ORDER
QUANTITY

R45.00
Serviced



▲ Product Code: PHL151009 Serviced FDC Number 8.90

International Year of Light

Envelope (First Day Cover)

Issue date:

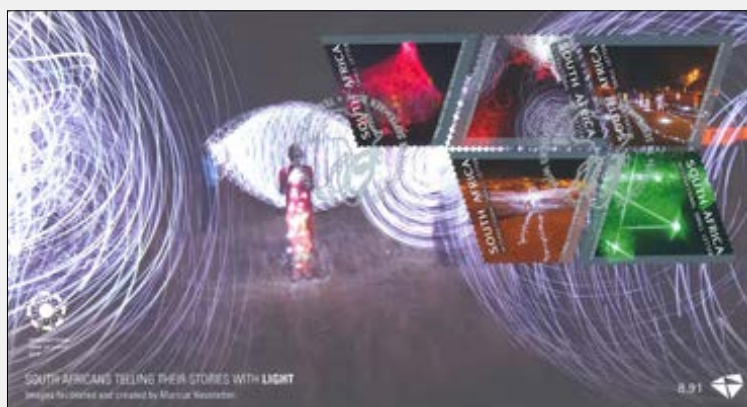
14 September 2016

Light is an indispensable part of our daily lives and is an essential cross-cutting discipline of science in the 21st century. It has revolutionised medicine, opened up international communication via the internet, and continues to be central to linking cultural, economic and political aspects of the global society.

The central role of light in the modern world was promoted - from the first studies of optics 1 000 years ago, to discoveries in optical communications that currently power the internet.

ORDER
QUANTITY

R45.00
Serviced



▲ Product Code: PHL151010 Serviced FDC Number 8.91

SA National Parks series, Part 2

Envelope (First Day Cover)

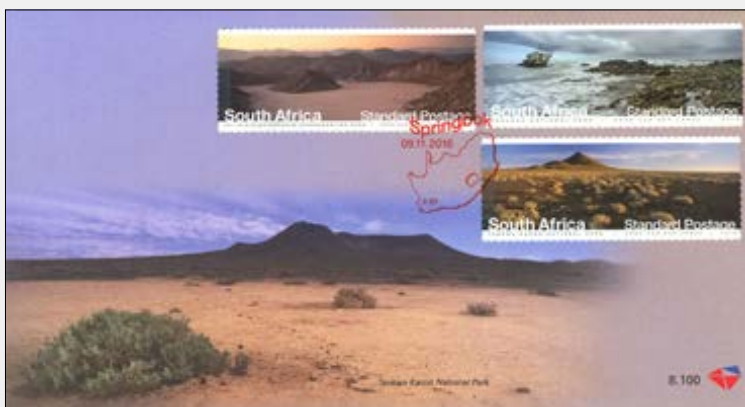
Issue date:

9 November 2016

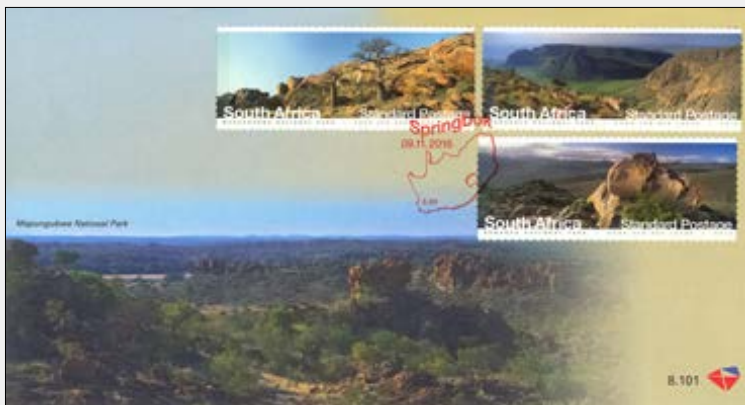
South Africa is renowned for its wealth of natural beauty and rich diversity of vegetation, geology, and cultures. The country is home to 21 national parks in which seven of the world's official heritage sites are protected.

The stamps depict the Marakele National Park, Mapungubwe National Park, / Ai-/Ais-Richtersveld Transfrontier Park, Namaqua National Park and the Tankwa Karoo National Park.

ORDER QUANTITY	ORDER QUANTITY
R13.80 Serviced	R13.80 Serviced



▲ Product Code: PHL151209 Serviced FDC Number 8.100



▲ Product Code: PHL151210 Serviced FDC Number 8.101

SA Biosphere Reserves

Envelope (First Day Cover)

Issue date:

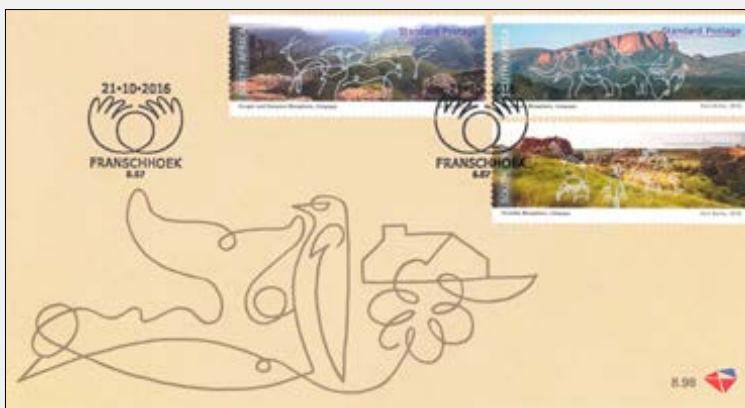
21 October 2016

Biospheres are natural biomes established by countries and recognised under UNESCO's Man and the Biosphere (MAB) Programme.

Their aim is to promote sustainable development based on local community efforts and sound science. South Africa boasts a total of six biospheres.

Biospheres are nominated by national governments and remain under the jurisdiction of the countries where they are located. Their status is internationally recognised.

ORDER QUANTITY	ORDER QUANTITY
R13.80 Serviced	R13.80 Serviced



▲ Product Code: PHL151309 Serviced FDC Number 8.98



▲ Product Code: PHL151310 Serviced FDC Number 8.99

Smile South Africa

Envelope (First Day Cover)

Issue date:

24 November 2016

A healthy mouth, fosters a healthier body and healthier nation. The miniature sheet celebrates all the health professionals, volunteers, Non-Governmental Associations and Foundations whose aim is to heal, rehabilitate and empower, all those who need to have a smile on their faces.

It also pays tribute and acknowledge all Endodontics for the role they play in filling cavities, brightening teeth, stopping pain and generally making patients feel whole and beautiful again.



▲ Product Code: PHL160109 Serviced FDC Number 8.102

ORDER
QUANTITY

R11.40
Serviced

Puppetry in South Africa

Envelope (First Day Cover)

Issue date:

7 October 2016

The earliest developers of puppetry might never have imagined that it could grow into the powerful, lucrative and thriving contemporary art form it is today. Puppetry has ballooned from being entertainment for children into a multibillion business in television, theatre, education, therapy, gaming and even politics.

The stamps depict these famous puppetry creations from South Africa: War Horse, Haas Das, Puppets by Gawie de Wet, In Medea Res and Ouroboros.



▲ Product Code: PHL160209 Serviced FDC Number 8.97

ORDER
QUANTITY

R21.00
Serviced

South African Geology

Envelope (First Day Cover)

Issue date:

26 August 2016

The stamps on these envelopes offer an artistic interpretation of ten different geological superlatives of great economic value and major scientific importance in South Africa. Cross-sectional keys were printed on the back of the stamps. The concept designs for these stamps were researched and drawn by South African geologist, Pieter Bosch of the Council for Geoscience and the artwork was illustrated by artist, Rachel-Mari Ackermann of Philatelic Services.

ORDER QUANTITY	ORDER QUANTITY
R45.00 Serviced	R45.00 Serviced



▲ Product Code: PHL160409 Serviced FDC Number 8.93



▲ Product Code: PHL160410 Serviced FDC Number 8.94

CITIES CoP17

Envelope (First Day Cover)

Issue date:

26 September 2016

CITES is the Convention on International Trade in Endangered Species – of Wild Fauna and Flora. Its aim is to ensure that international trade in specimens of wild animals and plants does not threaten their survival.

There are eight species of pangolins worldwide: three in Asia, one in India and four in Africa. The four African species are distributed throughout West and Central Africa, as well as part of East Africa, Southern Africa and as far south as South Africa.

ORDER QUANTITY
R36.60 Serviced



▲ Product Code: PHL160609 Serviced FDC Number 8.96

Contemporary SA Architecture

Envelope (First Day Cover)

Issue date:

20 April 2017

The term contemporary often alludes to a novelty of some kind. In terms of Architecture it encompasses a wide and diverse range of architectural styles. One of the defining attributes of contemporary architecture is the incorporation of the landscape, the history, the culture and environment into the design.

The stamps depict the Constitutional Court, Mapungubwe Interpretation Centre, Freedom Park, Mpumalanga Legislature and the Seed Library (Alexandra).

ORDER
QUANTITY

R21.00
Serviced



▲ Product Code: PHL160309 Serviced FDC Number 8:105

Bees for Africa

Envelope (First Day Cover)

Issue date:

12 July 2017

South Africa is home to two sub-species of honeybees namely, *Apis mellifera scutellata* (African bee) and *Apis mellifera capensis* (Cape bee). Bees play an important role in human lives through the provision of ecosystem services. When managed by beekeepers the bees provide commercial pollination services to farmers of pollinator-dependent crops and for honey harvesting. Without bees the diversity and quantity of our crops would be drastically reduced and the availability and cost of food would be greatly affected.

ORDER
QUANTITY

R21.00
Serviced



▲ Product Code: PHL160509 Serviced FDC Number 8:107

Wine Making In South Africa

Envelope (First Day Cover)

Issue date:

6 October 2017

When the Dutch East India Company sent Jan van Riebeeck to establish a fresh produce feeding station for ships sailing between Holland and Batavia and India, little did they envisage that it would give birth to a prosperous wine industry.

The Wine of Origin (WO) legislation passed in 1973, and Wines of South Africa (WOSA) established in the year 2000 are some of the mechanisms in place to identify, protect and promote South African wines. The WO seal certifies that the grapes and wine was 100% produced and bottled in that region.

ORDER
QUANTITY

R45.00
Serviced



▲ Product Code: PHL160709 Serviced FDC Number 8.110

South African Bird Series – Bee Eaters

Envelope (First Day Cover)

Issue date:

18 May 2017

Bee-eaters belong to the family *Meropidae*. It contains 27 species with 20 of them found in Africa. Bee-eaters are a feisty and hardy breed; they are relatively common and occupy a diversity of habitats including rain forests, deserts, grasslands and high mountain ranges. One of the interesting facts about bee-eaters is that in most species both parents take an active role in brooding the chicks, feeding and raising them. They feed mostly on insects with the favourites being bees, wasps and hornets.

ORDER
QUANTITY

R45.00
Serviced



▲ Product Code: PHL170309 Serviced FDC Number 8.106

SA National Parks series, Part 3

Envelope (First Day Cover)

Issue date:

10 August 2017

South Africa is truly a world in one country with landscapes ranging from arid semi desert areas, vast grasslands mottled with majestic mountain ranges, lush forests, meandering rivers and pathways, to a long coastline with picturesque views. The stamps pay homage to this beauty.

The five stamps depict the: Golden Gate Highlands National Park, Garden Route National Park – Tsitsikamma, Camdeboo National Park, Table Mountain National Park and Bontebok National Park.

ORDER QUANTITY
R139.50 Serviced



▲ Product Code: PHL170509 **Serviced FDC** Number 8.108

Homo Naledi

Envelope (First Day Cover)

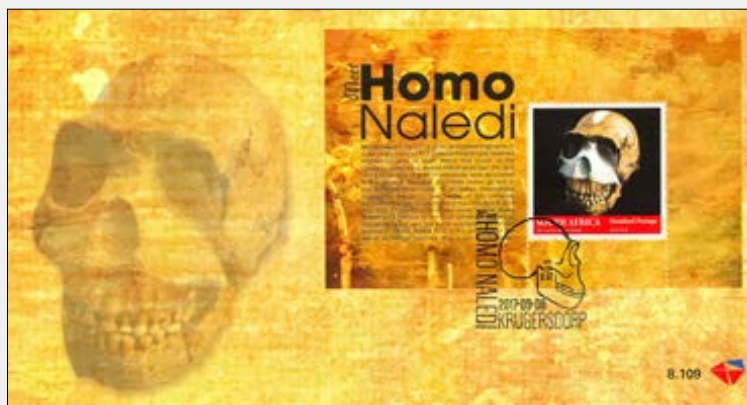
Issue date:

8 September 2017

The story of Homo naledi started when two recreational cavers entered a cave called Rising Star (Naledi Chamber), eager to find an unknown channel and perhaps discover some fossils in an area commonly known as the 'Cradle of Mankind'.

A multitude of fossils and earliest evidence of life on earth had been found in the area just west of Johannesburg in the middle of the 20th century leading to the belief that mankind originated in South Africa, a fact that East Africa also lay claim to.

ORDER QUANTITY
R11.75 Serviced



▲ Product Code: PHL170609 **Serviced FDC** Number 8.109

50th Anniversary of Mail-sorting by Machine

Envelope (First Day Cover)

Issue date:

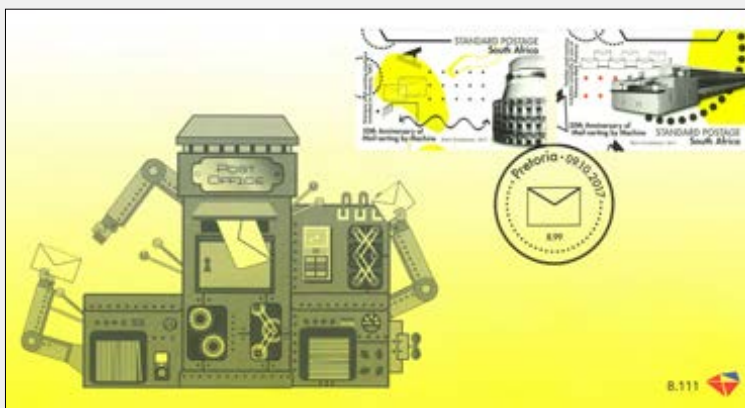
9 October 2017

One of the most fascinating experiences for a first-time visitor to a mail centre is watching mail, posted without codes, being sorted by hand at incredible speed.

There was a time when all mail was hand sorted. To increase productivity, postal authorities realised the necessity to mechanise the sorting of mail. Siemens led the race in the development of mail sorting machines and by 1965 it had produced an automated sorting machine in which the SA Post Office expressed interest.

ORDER
QUANTITY

R21.00
Serviced



▲ Product Code: PHL170709 Serviced FDC Number 8.111

50th Anniversary of the First Heart Transplant

Envelope (First Day Cover)

Issue date:

1 December 2017

Upon celebrating 50 years since the first heart transplant, one has to wonder at the bravery and daring of Dr. Christiaan Neethling Barnard and his team.

The opportunity for Dr. Barnard and his team of thirty personnel came when he met 54-year-old Louis Washkansky, who was suffering from extensive coronary artery disease. He agreed to go ahead with an experimental procedure. On 3 December 1967, Washkansky successfully received the heart of Denise Darvall on 2 December 1967.

ORDER
QUANTITY

R13.30
Serviced



▲ Product Code: PHL170809 Serviced FDC Number 8.112

Helen Suzman 100

Envelope (First Day Cover)

Issue date:

7 November 2017

Helen Suzman managed to accomplish so much in her life that it's difficult to talk about her without focusing on her political life. It's easy to forget that she was a daughter, a mother, a wife, an academic, a member of her community as well. As a Member of Parliament, she was able to say: "I stand for simple justice, equal opportunity and human rights. The indispensable elements in a democratic society - and well worth fighting for".

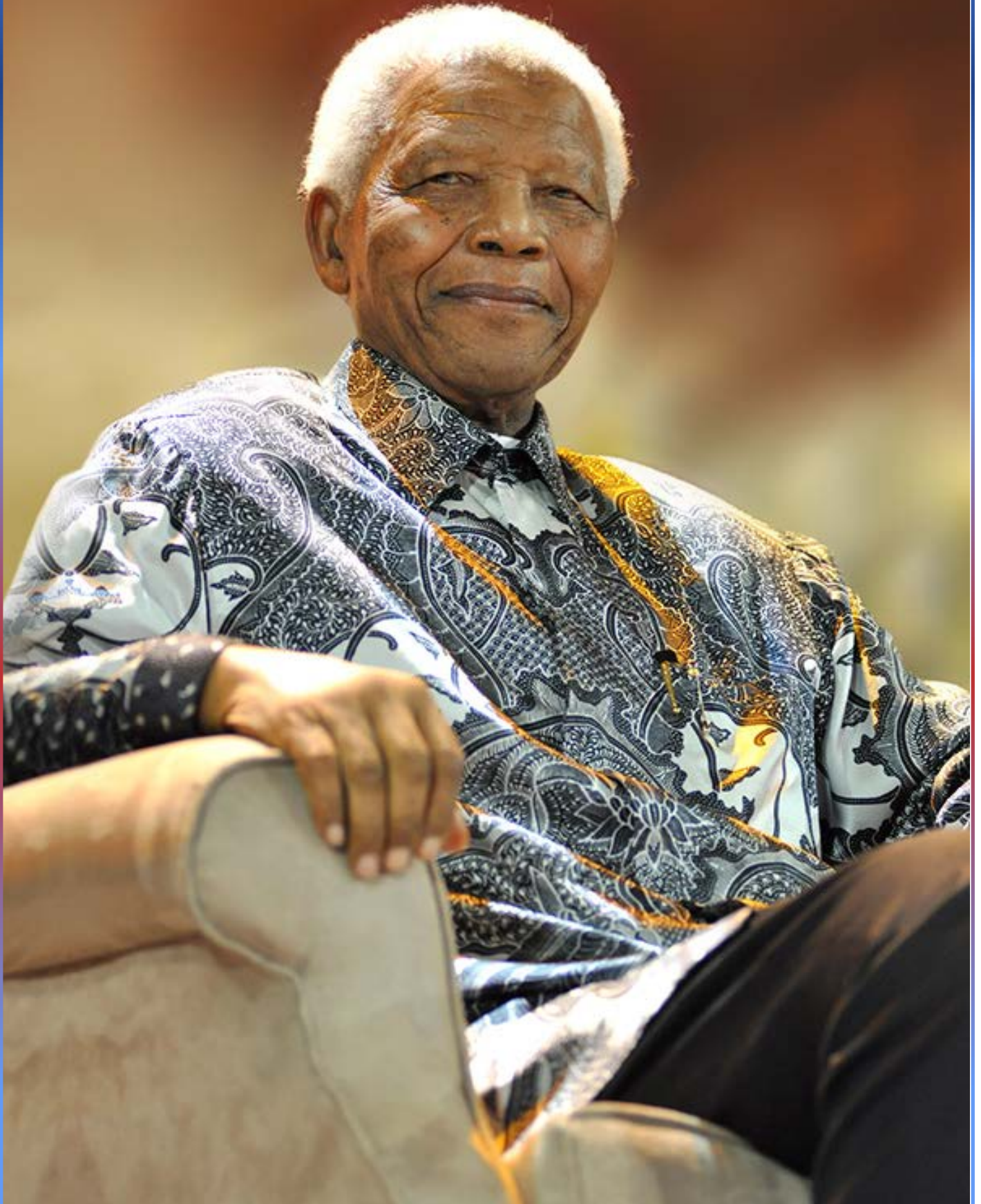
ORDER
QUANTITY

R6.60
Serviced



▲ Product Code: PHL170909 Serviced FDC Number 8.113

2018 Envelopes



The Big 5

Envelope (First Day Cover)

Issue date:

26 November 2018

The Big 5 is the collective name by which the Lion, Elephant, Rhino, Leopard and Buffalo are known. The Big 5 were referred to as such by large game hunters of earlier centuries, as they were the most difficult and dangerous to hunt.

The South African Post Office has been issuing stamps featuring the Big 5 over a number of decades due to their popularity. The stamps have ranged from paintings to photographs and from the adult Big 5 to the baby Big 5 and even parent and offspring. These stamps always have an Airmail Postcard rate.

ORDER
QUANTITY

R45.50
Serviced



▲ Product Code: PHL180109 Serviced FDC Number 8.116

SA National Parks series, Part 4

Envelope (First Day Cover)

Issue date:

31 May 2018

Nothing is truer than the cliché that South Africa is 'the world in one country'. The National Parks featured in the fourth part of the series truly reflects this beauty and diversity: Mokala National Park, Mountain Zebra National Park, West Coast National Park, The Wilderness National Park, The Knysna National Park.

ORDER
QUANTITY

R24.00
Serviced



▲ Product Code: PHL180609 Serviced FDC Number 8.115

President Cyril Ramaphosa

Envelope (First Day Cover)

Issue date:

9 October 2018

In December 2012, Matamela Cyril Ramaphosa was elected ANC Deputy President at the ANC's 53rd National Conference in Mangaung. He was appointed Deputy President of the Republic of South Africa on 25 May 2014.

In December 2017, he was elected 13th ANC President at the 54th National Conference in Johannesburg. President Cyril Ramaphosa was sworn in as President of the Republic of South Africa on Thursday 15 February 2018 following the resignation of President Jacob Zuma.

ORDER
QUANTITY

R7.20
Serviced



▲ Product Code: PHL181409 Serviced FDC Number 8.117

2019 Envelopes



Famous SA Diamonds

Envelope (First Day Cover)

Issue date:

19 June 2019

Nicky Oppenheimer used to say, "diamonds are intrinsically worthless, except for the deep psychological need they fill", or on a more positive note, that diamonds are a girl's best friend, according to Leo Robin.

Rough diamonds may sometimes be mistaken for worthless pebbles. This is probably why rich diamond deposits were only discovered in 1867 in Hopetown, South Africa, after which a mad rush for diamonds ensued leading to mindboggling individual prosperity and mining monopolies.

ORDER
QUANTITY

R52.00
Serviced



▲ Product Code: PHL190409 Serviced FDC Number 8.119

Famous SA Diamonds

Envelope (First Day Cover)

Issue date:

19 June 2019

The beauty of these, that are now objects of great wealth, hidden envy and awe can now be experienced by all South Africans and philatelists in the form of stamps.

The stamps depict the following famous diamonds: The Eureka – 1866, The Star of South Africa – 1969, The De Beers – 1888; The Exelsior – 1893, The Jubilee – 1895, The Cullinan – 1905, The Golden Jubilee – 1985, The Centenary – 1986, The Heart of Eternity – 2000; The Blue Moon of Josephine – 2014, The Millennium Star, and The Premier Rose

ORDER
QUANTITY

R52.00
Serviced



▲ Product Code: PHL190410 Serviced FDC Number 8.120

SA Social Security Agency (SASSA)

Envelope (First Day Cover)

Issue date:

9 October 2019

SASSA is a well-known government owned agency and its logo is one of the most recognised in South Africa (SA).

The first three stamps depict the three largest grant beneficiary groups: Child Support, Disability and Older Persons. SASSA also provides grants to Foster Care, War Veterans, Social Relief and Care Dependency. The fourth stamp portray two symbolic puzzle pieces that portray the SA Post Office and SASSA working together to serve these beneficiaries.

ORDER
QUANTITY

R50.60
Serviced



▲ Product Code: PHL190709 Serviced FDC Number 8.124

Stars and constellations

Envelope (First Day Cover)

Issue date:

15 January 2020

Since time immemorial, humankind has been gazing up at the skies in wonder. The beliefs of SA's peoples are celebrated on a limited edition of stamps and envelopes featuring the stars and constellations of the southern hemisphere.

The stamps depict ancient beliefs, and they'll appeal even to the youngest people in the 21st century. Printed with glow-in-the dark ink, the stamps shine like proper stars.

ORDER QUANTITY
R28.75 Serviced



▲ Product Code: PHL180709 Serviced FDC Number 8.128

Stars and constellations

Envelope (First Day Cover)

Issue date:

15 January 2020

Look up at the southern skies in an area where there is no light pollution, and you will be stunned by the sight of the Milky Way. The Xhosa believed the Milky Way originated when a girl of the Early People scooped up a handful of ashes and roots from the fire and flung it into the sky. The colours of the roots made the colour of the stars. To other peoples in SA, the Milky Way represents a supernatural foot path across the sky along which the ancestral spirits walked.

ORDER QUANTITY
R28.75 Serviced



▲ Product Code: PHL180710 Serviced FDC Number 8.129

SA Bird Series– Woodpeckers

Envelope (First Day Cover)

Issue date:

12 March 2020

Woodpeckers are rather interesting birds. To watch them building a nest is fascinating as it pecks and drills into the wood to form a perfectly round hole at the end. The whole process begs questions such as, does it not hurt; does the beak not break? Fortunately for the woodpecker, the beak grows continuously to replace keratin that flakes away. Its skull, head muscles, extra eyelids, feet and even wings have evolved through the ages to adapt into making it a highly functioning bird

ORDER
QUANTITY

R59.50
Serviced



▲ Product Code: PHL180809 Serviced FDC Number 8.122

South African Popular Music Legends Part 3 – Poets of Word and Sound

Envelope (First Day Cover)

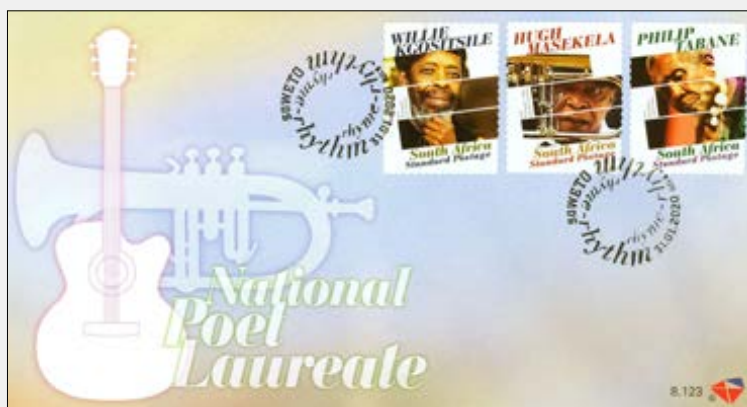
Issue date:

31 January 2020

The postage stamp is often referred to as the country's smallest ambassador. It is befitting therefore that three remarkable men whose words and music left an imprint all over the continent and the world is celebrated in this way. The stamps feature Hugh Masekela, Philip Nchipi 'Dr Malombo' Tabane and Keorapetse William Kgositsile.

ORDER
QUANTITY

R19.65
Serviced



▲ Product Code: PHL190509 Serviced FDC Number 8.123

SA Air Force 2020 – Embracing our Collective Heritage

Envelope (First Day Cover)

Issue date:

10 September 2020

When the Union of South Africa came into being in 1910 as a self-governing dominion of the British Empire, a motion was set in place for the creation of an independent South African Air Force (SAAF). The Airforce came into being on 1 February 1920, the date on which Col Sir Pierre van Ryneveld was appointed as Director of Air Services. The SAAF started with over 100 aircraft donated by Great Britain. Zwartkop Air Station was established shortly thereafter as the first formal military airfield in sub-Saharan Africa in 1921!

ORDER
QUANTITY

R32.70
Serviced



▲ Product Code: PHL200109 Serviced FDC Number 8.134

SA Air Force 2020 – Embracing our Collective Heritage

Envelope (First Day Cover)

Issue date:

10 September 2020

From the 1950s to the end of the 1980s, the SAAF became involved in conflicts with neighbouring countries and organisations. These included the Zimbabwe African National Union (ZANU PF) and Zimbabwe African People's Union (ZAPU) Zimbabwe; South West African National Union (SWAPO) in Namibia and the People's Movement for the Liberation of Angola (MPLA).

The SAAF joined the forces of Transkei, Ciskei, Bophuthatswana and Venda, Mkhonto we Siswe and Azanian People's Liberation Army (APLA) in 1994 to form the South African National Defence Force (SANDF).

ORDER
QUANTITY

R32.70
Serviced



▲ Product Code: PHL200110 Serviced FDC Number 8.135

South African Endangered Species, Part 1 – Frogs

Envelope (First Day Cover)

Issue date:

29 February 2020

Frogs are naturally found on all continents except Antarctica, where it is too cold for them to survive the icy conditions. Amphibians are made up of three orders. Frogs and toads belong to the order Anura (meaning 'tailless amphibian') and there are over 8 000 species worldwide. We only have frogs and toads in SA. The other two groups, Salamanders and Caecilians, occur further north. Toads are one of the families of frogs, and typically have lumpier skin and a more terrestrial mode of lifestyle.

ORDER
QUANTITY

R133.20
Serviced



▲ Product Code: PHL200209 Serviced FDC Number 8.130

South African Endangered Species, Part 1 – Frogs

Commemorative Display Card (CDC)

Issue date:

29 February 2020

Issued in partnership with the South African Post Office and the Endangered Wildlife Trust, this stamp set highlights six threatened frog species found only in South Africa. In conjunction with the stamp release, a guided walk was held on 29 February 2020 at Kirstenbosch National Botanical Gardens during "Leap Day for Frogs," featuring the Critically Endangered Table Mountain Ghost Frog and raising awareness about the country's imperilled amphibians.

ORDER
QUANTITY

R130.20
Serviced



▲ Product Code: PHL200210 Serviced CDC Number 8.000

Halala Bokke! – 2019 World Champions

Commemorative Display Card (CDC)

Issue date:

3 July 2020

Shouts, vuvuzelas and car hooters erupted nationwide when the South Africa national rugby union team won the 2019 Rugby World Cup in Japan, lifting the Webb Ellis Cup for the third time.

The triumph matched New Zealand's record. Earlier victories came in 1995 against the All Blacks and in 2007 against England. Nicknamed the Boks or Amabokoboko, they are symbolised by Bokkie the springbok, South Africa's agile national antelope.



▲ Product Code: PHL200310 Serviced CDC Number 8.001

ORDER
QUANTITY

R7.90
Serviced

President Cyril Ramaphosa

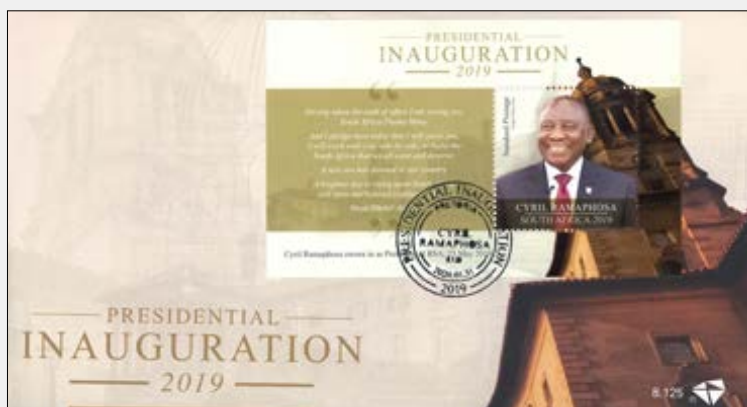
Envelope (First Day Cover)

Issue date:

31 January 2020

Matamela Cyril Ramaphosa was born in Soweto on 17 November 1952. Ramaphosa cut his political teeth as an activist during his years as a student of law at the University of the North, Turfloop, Limpopo.

Ramaphosa rose to prominence in the South African political scene when he, as a member of the Council of Unions of South Africa (CUSA), became the first secretary of the National Union of Mineworkers (NUM).



▲ Product Code: PHL190809 Serviced FDC Number 8.125

ORDER
QUANTITY

R10.55
Serviced

**2025–2026
Commemorative Display Cards**



IZIKO South African Museum Bi-centenary

Commemorative Display Card (CDC)

Issue date:

12 November 2025

These CDCs form part of this important heritage commemoration celebrated with this stamp issue. Commemorative display card 8.004 features the Iziko South African Museum building in Cape Town, founded in 1825 and located at the historic Company's Gardens beneath Table Mountain. Its collections span natural, cultural, and art heritage. Card 8.005 highlights the Whale Well, showcasing whale skeletons including a juvenile blue whale, reflecting the museum's legacy of scientific research, marine conservation, and inclusive shared heritage.

ORDER QUANTITY	ORDER QUANTITY
R151.30 Serviced	R151.30 Serviced



▲ Product Code: PHL250110 Serviced CDC Number 8.004



▲ Product Code: PHL250111 Serviced CDC Number 8.005

Critically Endangered Vultures – Vultures for Africa

Envelope (First Day Cover)

Issue date:

23 January 2026

Over the past three decades, vulture populations across Africa have plummeted, pushing several species to the brink of extinction and triggering the 2017 Multi-species Action Plan for African-Eurasian Vultures.

Toxic baiting continues to cause the greatest losses. Through its National Biodiversity Management Plan, South Africa has strengthened protection measures, helping the Cape Vulture improve to Vulnerable status in 2021.

Nevertheless, illegal trade and shrinking habitats remain serious pressures, demanding coordinated, long-term conservation action.

ORDER QUANTITY
R73.75 Serviced



▲ Product Code: PHL260110 Serviced CDC Number 8.006