

# The SA PHILATELIST

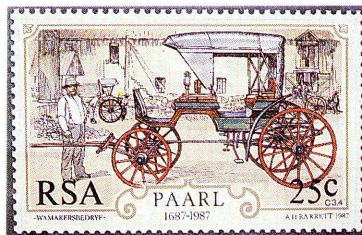
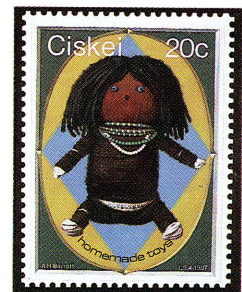
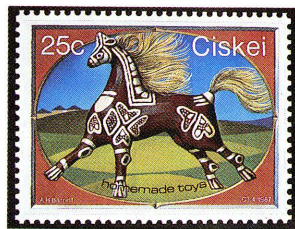
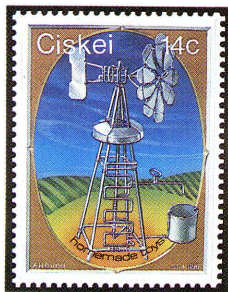
September 1987

R2.00  
inc. tax

Vol 63 No 9

- Die nuwe Bybelseëls
- Junior Show results
- *The 1988 Red Gibbons*
- Israel as a theme

*SA Lighthouses: stamps, postmarks, cards, covers and recollections*



Filateliedienste en Intersafa . Philatelic Services and Intersapa  
 Privaatsak/Private Bag X505, Pretoria 0001. RSA  
 Tel: 293-1029 / 293-1031/2



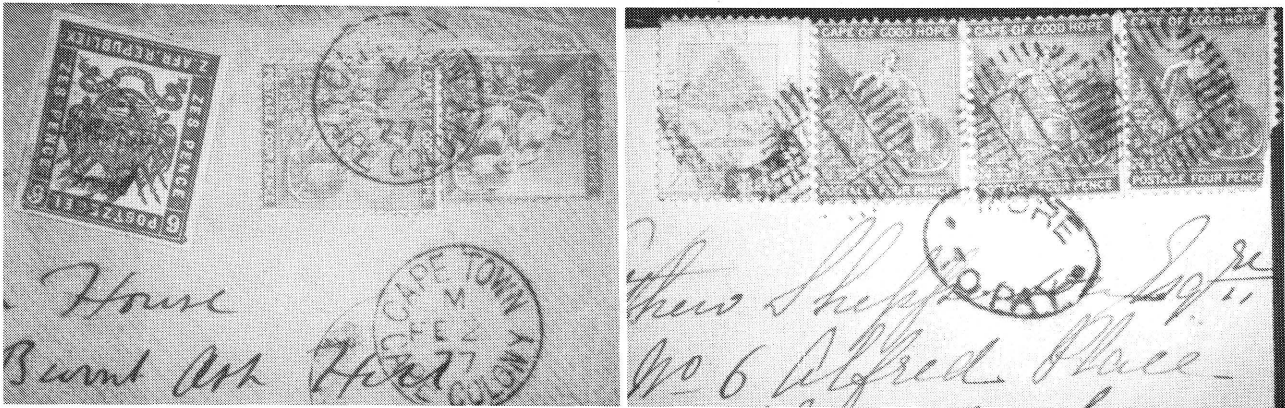
# BRITISH EMPIRE

27th October — London

Includes

A fine selection of Orange Free State and Orange River Colony including the collection of V.R.I. overprints formed by the late **GERARD BUCKLEY** and the collection of covers and cancellations formed by **A.G.M. BATTEN**.

Also in the sale a fine section of Basutoland covers with campaign mail, Transvaal covers with rare combination and Military Mail.



Illustrated catalogues R12

Christie's, P.O. Box 650852, Benmore, Sandton 2010,  
Johannesburg

**CHRISTIE'S**  
**ROBSON LOWE**

8 King Street, St. James's, London, SW1Y 6QT  
Cables: "Stamps London SW1"      Telex: 916429

**Our milestone**

This issue is the 750th number of The South African Philatelist, magazine of the Philatelic Federation of Southern Africa. Outside Europe and the USA, it is the oldest running stamp journal in the world.

**Published by**  
The Philatelic Federation  
of Southern Africa  
**Uitgegee deur**  
Die Filateliese Federasie  
van Suider-Afrika

**Intekening/Subscription**  
RSA/SWA — R20 (inc GST)  
Elsewhere — R30 (or equivalent)  
Single copy price: R2,00 inc postage or post  
free by surface mail. Airmail rates on appli-  
cation.

**Editorial/Redaksie**  
Hon Editor/Ere-Redakteur:  
Joh Groenewald RDPSA  
Posbus 4430  
Pretoria 0001

**New stamps/Nuwe seëls:** John Tucker,  
Tel: H (012) 44-5130  
**Erekorrespondent OVS en Noord-Kaap**  
Jan van Beukering, Posbus 1778, Bloemfontein  
9300. Tel: H (051) 33-2406, W (051) 31-3479.  
**Erekorrespondent Johannesburg**  
Danie Scheepers, Posbus 65258, Benmore 2010.  
Tel: H (011) 783-6554, W (011) 783-2438.  
**Honorary Correspondent Natal**  
Eddie Howie, 2 Glenlorne, 31 Vause Road,  
Durban 4001. Tel: H (031) 21-2892  
**Erekorrespondent Wes-Kaapland**  
Wilhelm Grütter, Posbus 2789, Kaapstad 8000.  
Tel: H (021) 23-8763, W (021) 24-5280  
**Honorary Correspondent Eastern Cape**  
Mike Oettle, PO Box 547, Port Elizabeth 6000.  
Tel: H (041) 30-2095.  
**Honorary Correspondent Zimbabwe**  
David Miller, Groenplaas, 4 Haupt Road, PO Amby,  
Zimbabwe. Tel H: Harare 45564, W: 70-3891 x 122.  
**Honorary Correspondent South West Africa**  
Leon Jacobson, PO Box 5862, Ausspanplatz 9000.  
Tel W: (061) 29-3365.

**Advertising, subscriptions**  
J Michelson RDPSA FRPSL, PO Box 375,  
Johannesburg 2000. Tel: W (011) 838-1466.  
**Promotional advertising:** Andries van der Walt,  
Tel H. (011) 972-4417.

**The SA Philatelist Management and Editorial  
Board/Redaksie- en Bestuurskomitee:**  
J Michelson RDPSA J Groenewald RDPSA  
N Becker RDPSA

*Change of address? Please send the addressed  
wrapper of your last copy with a note of the new  
address to the Hon Secretary, PO Box 375, Johan-  
nesburg 2000, three weeks in advance.*

**Advertising rates on application from Mr Michel-  
son (address above).**  
**Correspondence to the Hon Editor (address  
above).**

**Expert Committee/Keurkomitee:** Hon Secretary,  
PO Box 14048, Farrarmere 1518. Meets third Satur-  
day of each month.

**South African Philatelic Dealers' Associa-  
tion/Suid-Afrikaanse Filateliese Handelaars-  
vereniging:** For up to date membership list send  
SAE to Hon Secretary, PO Box 31193,  
Braamfontein 2017.

**INHOUD/CONTENTS**

|  |     |
|--|-----|
| Bybelseëls spreek in baie tale .....   | 174 |
| New special datestamps .....   | 174 |
| Junass was a most delightful show .....  | 175 |
| <i>And the full results of the 1987 junior national stamp show</i>   |     |
| New stamps/Nuwe seëls .....  | 176 |
| <i>John Tucker reports on new issues from neighbour states and some others, naval uniforms, a new view of Vic Falls, steam locos and birds</i> |     |
| Johannesburg 1986: the markings of a city .....  | 179 |
| <b>Lighthouses</b>   |     |
| Lighthouses for the album .....  | 180 |
| <i>A preview of some RSA stamps for 1988</i>   |     |
| Full list and light on the subject .....   | 181 |
| Some light on some unusual postal history .....  | 182 |
| <i>When far-flung lighthouses were also postal offices</i>   |     |
| Vakansiepos, en 'n komende nuwe naam .....   | 184 |
| Die ou suiderlig gaan weer skyn .....  | 184 |
| Danger Point: the stirring story behind a cover .....  | 185 |
| <i>Old-time lightkeepers remember the postal arrangements:</i>   |     |
| Sid (84) remembers the flagging days .....   | 186 |
| Those were the years .....   | 186 |
| Indeed, it was bird mail to Bird Island .....  | 187 |
| <i>The mailbirds actually flew both ways</i>   |     |
| How many South African lighthouses are featured on postcards? .....  | 188 |
| Cards kept by keepers .....  | 189 |
| Official postcards .....   | 190 |
| These stamps are a de-light! .....   | 191 |
| <i>The thematic history began in New Zealand</i>   |     |
| Another connection .....   | 192 |
| Books/Boeke .....  | 193 |
| Looking back .....   | 194 |
| Why I collect Israeli stamps .....   | 195 |
| Society news/Onderonies .....  | 199 |

**REDAKSIONEEL/EDITORIAL**

**Where are these collections?**

IN LINE with the historical nature of the tercentenary celebrations of Paarl, the Paarl 300 national stamp exhibition sought to emphasise also those countries which yielded emigrants to South Africa — countries with which a fair number of South Africans still may have some affinity.

Accordingly the exhibition organisers created a display category for the philately of some 'countries of origin', being the Netherlands, France, Germany, Great Britain and Portugal.

For over three centuries people from these northern lands settled in and helped to shape southern Africa. Some profound historical commemorations — the Diaz anniversary, the French Huguenot settlers — are on next year's calendar. Many South Africans also speak languages of Europe.

Yet collecting of the stamps of these countries does not seem too popular, as Paarl 300 this month shows. Entries are varied — when last did we enjoy a showing of French stamps at a club meeting? — and there is not a single entry of Portugal.

Of course we pride ourselves in our home-country collections of Southern Africa, but in our corps of collectors there is a wide divergence of interests and the annals of our hobby show that superlative collections of European countries, from the Baltic to the Balkans, have been formed by local enthusiasts.

But where are they now? Let's see them!

**Die opkomende geslag**

VERLEDE maand het ons 'n rekordlys van jeugklubs in die Junior Rendezvous gepubliseer, en vandeemaand pryk die resultate van die vierde junior nasionale seëlskou (Junass) as 'n treffende bewys van die goeie werk wat ons Filateliese Federasie met die bevordering van seëlversameling onder jongmense doen.

Tog is dit nie "die Federasie" wat die werk doen nie — dit is mense, die harde werkers in die Jeugkomitee, die ywerige jeugleiers deur die land, mense wat in talle ander komitees en hoedanighede ons stokperdjie dien . . .

Aan hulle almal, en veral aan die onbaatsugtige jeugleiers, sê ons graag Geluk! Dankie! doen so voort! — **Die Redakteur/The Editor**



Die eerstedagstempel is vir Roggebaai (in Kaapstad) en toon die saaiër-embleem van die Bybelgenootskap van Suid-Afrika. (Die illustrasies toon die hoër seëlwaardes as 20c, 25c en 30c.)

## Bybelseëls spreek in baie tale

VIER uitsonderlike seëls met die Bybel as tema word op 19 November 1987 deur die RSA uitgegee om aandag te vestig op die oorsprong, aard, verspreiding en boodskap van die Bybel.

Toe ons al vanjaar se nuwe seëls van Suider-Afrikaanse lande in *The SA Philatelist* van Januarie 1987 geïllustreer het, was hierdie ontwerpe nog nie beskikbaar nie.

Die Poskantoor sê enkele aspekte rondom die Bybel in Suid-Afrika is vanjaar gedenkwaardig



\* In April 1837, 150 jaar gelede, het Engelssprekende Setlaars aan die Oosgrens op Grahamstad 'n Statenbijbel aan Voortrekker-leier Jacobus Uys en sy medepioniers oorhandig en so 'n band tussen dié twee groepe gesmee.

\* Die eerste volledige Bybel in Afrika, die vertaling in Tswana deur Robert Moffat, is in 1857 met 'n ouderwetse handpers op Kuruman gedruk.

\* Binne 40 maande na sy verskyning in Desember 1983 is een miljoen eksemplare van die Nuwe Afrikaanse Vertaling van die Bybel versprei.

\* Suid-Afrika is die enigste land waar die Staatspresident die ampseël deur sy handtekening in 'n tweetalige Bybel bevestig.

Die seëls ton die volgende:

16c — 'n Buitelyn van Afrika met, in verskillende tale, die titel van die Bybel. Daar is 75 titels dog die opskrif *Biblia* kom twee keer voor omdat dit vir nege vertalings gebruik word. In Afrika is die volledige Bybel in 111 tale beskikbaar. Dit is die meeste tale wat nog op 'n enkele seël verskyn het. Onder die titels is ook dié van die enigste Bybel ter wêreld met die opskrif *Woord van God* naamlik *Elombis* in Nama.

30c — *Belsasar se Fees*, 'n skildery van Rembrandt uit 1635 wat die dramatiese toneel weergee wat in Daniël 5 opgeteken is. Die skildery is in die National Gallery, Londen.

40c — Die Woord van God, 'n frase wat in die brontale van die Bybel, Hebreeus en Grieks, weergegee word. Die frase kom ongeveer 250 keer in die Ou Testament en 50 keer in die Nuwe Testament voor.

50c — *St Mathieu et l'ange* (Matteus en die Engel), 'n olieverfskildery van Rembrandt uit 1661. Die skildery gee 'n vertolking van die inspirasie van die Bybel: Matteus se gesig toon afwagting en bepeinsing. Die skildery is in die Louvre, Parys.

## New special datestamps

A series of temporary special datestamps has been announced by Philatelic Services and Intersapa.

The postal administrations of the RSA, SWA, Transkei, Bophuthatswana, Venda and Ciskei participated in Riccione 87, an international philatelic exhibiton held in Riccione, Italy, from 22 to 24 August 1987.

Special postmarks were made available for the event and featured the postal service emblems of the countries. Datestamp cards were made available by Philatelic Services and Intersapa.



The 80th anniversary of the karakul industry in South West Africa will be "marked" by the use of a special postmark in Windhoek on 24 September 1987. The postmark pictures the stylised outline of a karakul ram's head.

A commemorative cover will be made available at R1,20 and the datestamp card costs the usual 26c.

Readers will remember the SWA Karakul industry stamps of last year. The first karakul sheep were imported to South West Africa in 1907.

Boksburg will have a special postmark for its centenary celebrations next month. The postmark, with the fixed date 6-10 October 1987, depicts the town's coat of arms.

A cover and datestamp card will be available from Philatelic Services and philatelic counters. Boksburg is named after Dr W E Bok, State Secretary of the ZA Republiek at the time of its founding.

A stylised medical staff emblem, with wings, is the special postmark to be used at the 35th international Congress of Aviation and Space Medicine, scheduled for 12-15 October 1987 in Cape Town. A cover and a datestamp card will be available.



# Junass was a most delightful show

by Jill Redmond

(Chairman, Youth Committee, Philatelic Federation)

WELL, a young man finally managed to beat the young ladies!!! At the fourth Junior National Stamp Show, held in Pietermaritzburg on 17 and 18 July 1987, Iain Reynard won the Sam Legator Junior Grand Prix — a marvellous achievement since the standard of the exhibits was even higher this year.

A point of interest also was that country collections figured prominently in this year's honours.

Some 51 competitive exhibits, plus 3 court of honour exhibits, were distributed over 106 frames in the City Hall of Pietermaritzburg — a most interesting old building sporting a magnificent organ and a fascinating gallery — obviously an ideal venue since there was a steady flow of visitors to the exhibition.

The show was opened by the Mayor, Cr M H Cornell, a very enthusiastic supporter of "youth", and he and members of his council displayed a great interest in the proceedings.

Judging, headed by Marnus Steyn, must have been hectic since every exhibit deserved and won a medal, resulting in:-

|                         |                  |
|-------------------------|------------------|
| 3 gold                  | 15 Silver bronze |
| 5 Silver gilt           | 16 Bronze        |
| 12 Silver (1 with fel.) |                  |

**The Grand Prix** was won by Iain Reynard (Maritzburg Junior Stamp Club) with A Study of early British stamps and stationery, a wonderfully clear and concise history covering highlights from the reigns of Queen Victoria to King George V with some very interesting material, including fakes, forgeries and a short study of the "Penny reds" — obviously a great deal of research went into the exhibit.

**Best exhibit: 8-11 years:** won by Neil Goss (Maritzburg) for A-Z of Birds, a very popular subject but tackled in an original manner with some interesting stamps, covers and cinderella stamps — all very well written up.

**Best exhibit: 12-15 years:** won by Peter Newmarch (Maritzburg) for Machins — A Study of the ½p, a very well presented exhibit on a vast and complicated subject — the current definitives of Great Britain. Included was a cross-section of postal stationery and booklets which really added interest to the study.

**Best exhibit: 16-18 years:** won by Nicholas Braun (Maritzburg) for Censor marks and labels, a beautifully presented collection of extremely interesting covers and cards from periods such as the Anglo-Boer War and the two Great Wars — a fascinating subject and well covered.

**Best thematic exhibit:** won by Carol Hathorn (Maritzburg) for Birds (for the second year running — well done) — again on the popular subject of birds but the collection showed an excellent knowledge of the subject, beautifully illustrated with interesting material such as relevant cancellations, pigeongrams, Cinderella stamps, postal stationery, etc.

**Best country exhibit:** won by Ian Blokpoel (Sasolburg) for Die Unie van Suid-Afrika, a very well presented and knowledgeable study on highlights from the period 4.11.10 to 2.6.50, including research and material on various printings, colour changes, errors on stamps, booklets, postal stationery, etc.

**Best other exhibit:** won by Marietjie Lessing (AFV, Johannesburg) for Posstempels van Suid-Afrika, a very neat exhibit displaying postmarks, come short-lived, from many weird and wonderful places throughout South Africa on official postcards.

**First-timer award:** won by Gerard Frater (Cape Town) for Van Driemansland/Tasmania covering the period 1853 until 1913, a well-written exhibit showing some interesting material and a good knowledge of the subject.

**Best newsletter:** won by Theo Winter (Vanderbijlpark) — an interesting publication, well-written and full of variety.

If there seem to be a great many award winners from Maritzburg — there were a great many exhibitors from Maritzburg! Hope-

fully the other junior clubs will give Maritzburg a run for their money at Junass 88 in Witbank!

Awards were presented on the Saturday by Stan Naylor RDPSA with a most appreciative crowd in attendance. Iain Reynard, together with his father and grandparents, managed to attend in person by motoring from Pretoria (and back) on the Saturday, all adding to the fun.

The organising committee must be very proud of the success of their show and, on behalf of the Youth Committee, I would like to thank Eric Holmberg and his willing workers for all their wonderful efforts. In addition, congratulations to all the juniors for their superb exhibits.

## The Junass 87 results

### Sam Legator Junior Grand Prix

Iain Reynard, Early British stamps and stationery (age group 16-18) (also gold award)

#### Age group 8-11

*Silver award*

Neil Goss, A-Z of Birds (also award for best exhibit in this age group)

*Silver-bronze*

Caron Starkowitz, the Protea issue

#### Age group 12-15

*Gold award*

Peter Newmarch, Machins (also award for best exhibit in this age group)

*Silver-gilt*

André Gouws, China, 'n nuwe wêreldreus

Carol Hathorn, Birds (also award for best thematic exhibit)

Walter Hathorn, Boats and ships

Quintin Rosettenstein, Man's best friend (dogs)

*Silver*

Donovan Bailey, Water transport

Graham Lovell Greene, Dogs

Andrew Rosettenstein, Birds

A Slaghuis, In die sweet van jou aangesig . . .

Peter van den Berg, Transkei

*Silver-bronze*

Douglas Armstrong, Art and artists

Kathryn Lillis, Underwater world

Paul Reynolds, Fish, fishing and mammals of the sea

Johann Richter, Gekroonde vorste

Andrew Barnes, Modern postal history of SA

Mark Henderson, Errors and varieties of SA

Ryan Read, Marine life

*Bronze*

Robert Armour, Water sports

Andrew Bee, Seychelles

Martyn Fitzgerald, Halley's Comet

Lance Greyling, Castles

Edward Hemus, Orchids and roses

Brian Langford, Animals of our national parks

Brenton Leisegang, Journey through the Kruger Park

Shaun Reddy, Horses

Johann Richter, 'n Babelse verwarring

Robert Smart, Flora and fauna

#### Age group 16-18

*Gold award*

Nicholas Braun, Censor marks and labels (also award for best exhibit in this age group)

*Silver-goud*

Ian Blokpoel, Unie van Suid-Afrika (ook toekenning vir die beste landsversameling)

*Silver*

Maryna Coetzee, Ons kleurvolle blommeparadys

Howard Hathorn, Cats

Marietjie Lessing, Wilde diere van Suidelike Afrika

Gerrit van Tonder, Die mens oorwin die ruimte

Theo Winter, Kom leer en studeer by mnr De Beer (met gelukwense)

Marietjie Lessing, Posstempels van Suid-Afrika (ook toekenning vir die beste 'ander' versameling)

*Silver-bronze*

Howard Heymans, Boy Scouts and Girl Guides

Rene van der Westhuizen, Wiele van vooruitgang

Rene van der Westhuizen, Helde sonder aansien

Theo Winter, Die sterre voorspel

Darrell Bailie, Union of South Africa

Gerard Frater, Van Diemansland/Tasmania (also 'first-timer' award)

Eric Slaghuis, Op wieke van die wind

*Bronze*

Sharmraj Bauchoo, Transport and communications

Holger Fischer, Fairy tales depicted on German stamps

John Langford, Southwest of whom and whereto next?

Vincent Noel, Birds of Maurice

Eric Slaghuis, Koloniale koors

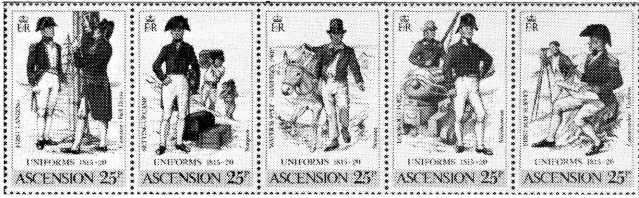
**Nuusbriewe**

*Silver*

Filatieleklubnuusbriewe, Hoërskool Driehoek (Theo Winter) (ook toekenning vir beste nuusbriewe)

*Brons*

Oilfilat Junior Nuusbriewe (Gerrit van Tonder).



## Naval uniforms from a naval island

MILITARY uniforms look good on stamps, as Gibraltar, Spain, Belgium and Ciskei have shown.

Naval uniforms have been less in evidence, but Ascension now goes some way towards restoring the balance. A splendid se-tenant strip of five 25c stamps depicting naval uniforms of the period 1815 to 1820 was released through Crown Agents on 29 June 1957. This was part one of a series and Chris Collins was the designer.

Ascension was first settled in 1815. The imprisonment of Napoleon on St Helena led to Ascension, a possible escape point, being garrisoned. This is therefore something of a narrative series.

The first design is titled "First landing" and shows the front and back views of a captain in full dress.

No 2 is "Setting up camp" and has a surgeon in the foreground with a seaman behind him. At this time, apparently, men serving below decks had no regular uniforms.

The third stamp is "Water supply — Dampier's drip." A uniform of a type was beginning to emerge during this period but varied from ship to ship. Sailors did wear tarred hats bearing the ship's crest. The "drip" part of the title is not explained.

Stamp four is "Look-out post" and shows a young midshipman and a seaman.

Finally, "First map survey" depicts a lieutenant in the background and a commander in front. The latter is without his sword, which would be useless for such a task.

Another few such colourful strips might well form the basis of a fascinating thematic collection.

Livingstone. Daar is blykbaar 'n hele aantal van hierdie bome wat asembenemende gesigte op die Victoria-waterval bied — 'n mens klim net met die leer op na die uitsigplatform.

K1,25 — Bootjiewaart op die Zambesirivier, benede die Victoria-waterval. Dit is 'n avontuurlike soort onderneming want in die skeurkloof is rotse, maalkolke, krokodille en dies meer. Die seël bied 'n ongewone perspektief op die waterval.

K1,70 — Leeus in die Luangwawallei, waar besoekers ook geleide staptogte kan onderneem om die grootwild van nader te besigtig.

K10 — Die skouspelagtige wit pelikaan (white pelican) in vlug oor 'n meergebied. Daar is drie natuurlike mere — Mweru, Tanganjika en Bangeulu — en die mensgemaakte Karibameer en watervoëls is volop.

## More hibiscus

Flowers are always with us philatelically and Nigeria released another set of four on 28 May 1987. Once again the hibiscus was included, this time the *Hibiscus tiliaceus* on the 20k value.

Others in what is actually a rather plain set are *Clitoria ternatea* (Blue pea but) on the 10k, *Acanthus montanus* 25k and *Combretum racemosum* 30 k.



## Malawi shows old locomotives

MALAWI featured sets of four locomotives each in 1968 and 1976 and also marked the opening of the Salima-Lilongwe Railway in 1979. Another chapter of the country's railway history was illustrated with the release through Crown Agents on 25 May 1987 of four stamps depicting steam engines. These appear to be in the real vintage class.

The 10 tambalas value shows the Shamrock engine No 2 and the 25t stamp Steam locomotive No 8. The 30t depicts the Thistle engine No 1 (could this have been the first in the country?) and the 1 kwacha the Kitson engine No 6.

The designer of the set was also the printer, Cartor SA France, which seems recently to have entered the international stamp printing market.

No doubt railway buffs, of whom there seem to be an increasing number around, will surely be able to date these locos and show them in proper context.



## Victoria-waterval uit boom en boot

ZAMBIE is 'n groot land met talle toeriste-aantreklikhede en vier daarvan word afgebeeld op 'n stel seëls wat op 2 Julie 1987 deur die Kroonagente vrygestel is.

Die seëls toon:

35n — 'n Groot uitkyk-boom ('n kremetart, baobab) naby



# Drugs: A new theme takes shape

MALAYSIA and Brunei are two Far Eastern countries which have recently taken a firm stand on drugs. Last year Malaysia hanged two men for drug possession and since then has twice used stamps to promote its anti-drug stance. Brunei has issued one set earlier this year.

Malaysia's second set appeared on 8 June 1987, two attractive se-tenant pairs issued to mark an International Conference on Drug Abuse and Illicit Trafficking. Kathy Design was responsible for the imaginative and colourful treatments.

The 20c pair shows (upper stamp) a child, butterfly and family group with the caption "Yes to life". The lower stamp shows the child's body with the organs revealed as though by X-rays. The damage caused by drugs is shown and the caption is "No to drugs."

The 40c pair repeats the captions with slightly different designs. Release was through Crown Agents.

Altogether this is a most thought-provoking theme. Australia and the USA are two countries which have already made drug abuse issues, these in the early 1970s.



# Bird stamps shower down from polar seas to tropics

IT'S UP, up and away this month with some of the most striking bird stamps seen in months. There are so many, in fact, that it is impossible to illustrate them all. For the thematic specialist, however, the lists given here are complete. These are, by the way, all Crown Agents releases.

Top of the heap is a new definitive series of 15 marine birds issued for South Georgia and the South Sandwich Island. This is the current designation of the Falkland Islands Dependencies.

The designs are by A R Chater and were released on 24 April 1987. Three FDCs were used. These depicted the White-chinned Petrel, the Antarctic Tern and Wilson's Storm Petrel. The stamps show:



Dominican Gull 1p; Blue-eyed Cormorant 2p; Wattled sheath-bill 3p; Brown Skua 4p; Cape Pigeon 5p; South Georgia Diving Petrel 6p; South Georgia Pipit 7p; South Georgia Pintail 8p; Fairy Prion 9p; Chinstrap Penguin 10p; Macaroni Penguin 20p; Light-mantled Sooty Albatross 25p; Southern giant petrel 50p; Wandering Albatross £1 and King Penguin £3.

Many of these species are known around the shores of South Africa at different times of the year.

The Rockhopper Penguin features on a new set of four from Tristan da Cunha. The designs, with the birds set against coloured backgrounds, are by Ian Strange. The release date was 22 June 1987.

Rather more varied is a Barbados wildlife set of five values imprinted with the Capex 87 logo. Designs, by Philip Broadbent, are reminiscent of Barbados's current definitive. Values and species are 25c Barn Swallow; 50c Yellow Warbler; 65c Audubon's Shearwater; 75c Black-whiskered Vireo and 1 dollar Scarlett Tanager.

Finally, Sri Lanka has added four values to its bird definitive. On 18 May 1987 it issued 50c and one, five and ten rupee values featuring respectively Leyard's Parakeet; Legge's Flower Pecker, the Sri Lanka White-headed Starling and the Sri Lanka Rufous Babbles. Gamini Ratnavira was the designer.

# Mauritius: The bridges and The Bar

MAURITIUS recently made two special stamp issues within a brief period. The first, on 22 May 1987, featured five bridges existing on this roughly pear-shaped island. The set was designed by David Hartley.

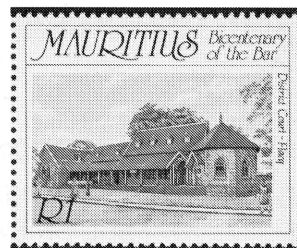
Mauritius is about 60 km long by 46 km wide and has many short, fast-flowing rivers. None is navigable but some of the larger have been harnessed for hydro-electric purposes.

The bridges depicted are the Hesketh Bell bridge (25c), Sir Colville Deverell (50c), Cavendish (Rs2,50), Tamarin (Rs5) and Grand River North West bridge (Rs10). Considerable variety in style of structure is evident.

The second set, designed by Nick Shewring and released on 2 June 1987, was a commemorative celebrating the bicentenary of the Bar in Mauritius.

Stamp subjects and values are the Supreme Court, Port Louis (25c), the District Court, Flacq (R1), Statue of Justice (Rs1,25) and Barristers' gowns of 1887 and 1987 (Rs10).

Both sets were released through Crown Agents



# Swaziland spog met bewaring

SWAZILAND het in die onlangse jare verskeie heel aantreklike seëluitgawes gehad wat natuurlewe uitbeeld. Die jongste is vier seëls oor die witrenoster, square-lipped rhinoceros, *Ceratotherium simum*, wat op 1 Julie 1987 uitgegee is.

Die ontwerper was Doreen McGuinness en elke seël toon die embleem van die Wêreld-Natuurfonds.

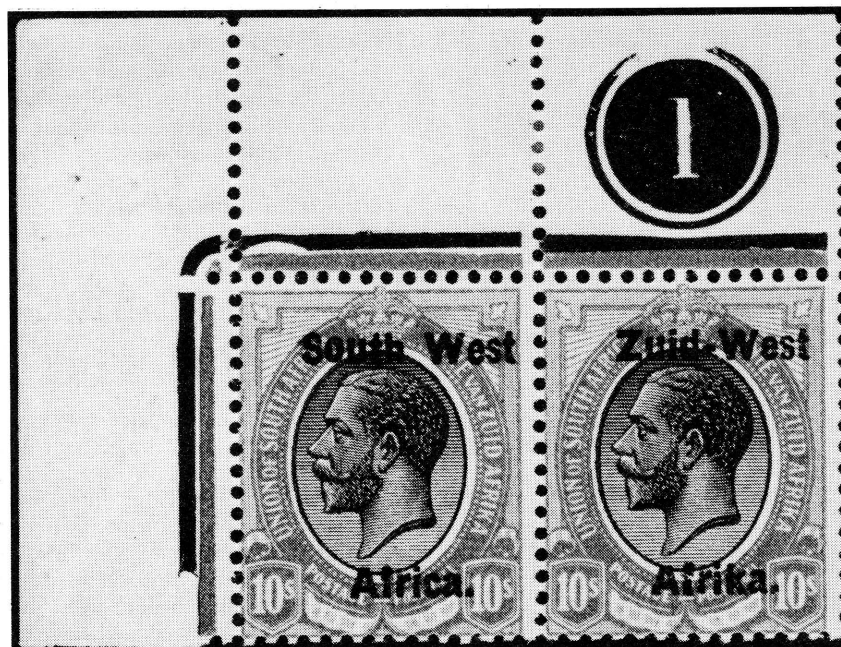
Volgens 'n feiteblad van die Kroonagente is daar vandag net enkele renosterspesies wat oorleef. Dit is die Indiese en Javaanse diere, met 'n enkele horing, die Sumatraanse renoster met twee horings en die swart en wit renoster van Afrika, ook met twee horings.

Ons herinner lesers aan die mooi tematiese artikels oor renosters

# PHILACCLASSICA AG

DEALERS IN RARE STAMPS AND POSTAL HISTORY

THE QUEEN OF SOUTH-WEST AFRICAN STAMP



The queen of South-West African postage stamps is really a king's head. The hunt for the first ten shillings control pair has been going on for a long time among connoisseurs. Lobdell in "the De La Rue Georgians of South Africa" (1944) depicts a bottom left corner block. The whereabouts of this block are unknown. To the best of our knowledge the above pair is the only complete control ever available for several decades.

Price on request.

Offered subject unsold. All enquiries about the above stamp to Switzerland, please.

**BUYING: WE ARE CURRENTLY LOOKING FOR DESTINATIONS AND INCOMING MAIL OF SWITZERLAND**

ASK FOR OUR CURRENT LIST OF OFFERS OF SELECTED MATERIAL.  
JOIN OUR SPECIALIST REGISTER. WHEN BUYING OR SELLING CONTACT US.  
REMEMBER WE HAVE IMMEDIATE ACCESS TO THE WORLD'S LEADING PHILATELIC AUCTION AND FINANCIAL SCENE IN SWITZERLAND.

## PHILACCLASSICA AG — M. EICHLE

GERBERGASSE 24 — POSTFACH 563  
CH — 4001 BASEL — SWITZERLAND  
Tel. Switzerland 61 25 73 79

### PERSONS OF CONTACT IN SOUTH AFRICA;

INGRID MENDELSSOHN, PO Box 1607, Johannesburg 2000  
Tel. 011 8842238

THE MAIL-RUNNER, PO Box 11029, Klein Windhoek 9000  
Tel. 061 222837

op seëls in *The SA Philatelist* van Februarie 1986, bladsy 36.

Renosters val die mens ten prooi vanweë 'n heeltelmal valse opvatting dat verpoeierde renosterhoring sterk afrodisiese eienskappe sou hê. Gevolglik is die diere in Asië en in Afrika bedreig. In die afgelope vier jaar is meer as die helfte van die swartrenosters in Afrika, benoorde die RSA, afgemaai.

Die witrenoster is die grootste renostersoort. Die noordelike subsoort kom in Soedan, Uganda en die Sentraal-Afrikaanse Republiek voor, dog daar is net 'n handjievol van hierdie erg bedreigde diere oor.

Die suidelike subsoort is vandag beter gevestig, danksy 'n omsigtige beleid van bewaring en hervestiging. Swaziland se witrenosters is in die Mlilwane-wildtuin gevestig.



## More from Seychelles

TWO commemorative stamp issues were made by the Seychelles through the Crown Agents during June. The first, on 5 June 1987, celebrated the tenth anniversary of Liberation; the second on 25 June marked the centenary of Banking.

The Liberation set depicted the Statue of Liberation (R1); Seychelles Hospital (R2); Orphanage Village (R3) and the Fish Monument (R10). The designer was Harrison's Studio.

The three values in the Banking set were designed by Tony Theobald. They depicted the Seychelles Savings Bank (R1); the Development Bank (R2) and the Central Bank (R10).



**Zimbabwe** will issue a set of stamps featuring duikers on 7 October 1987.

**Exchange wanted** — K P Shamun, Lovedale Philatelics, VPI/241 Azhinhilam, 673654 Calicut, Kerala, India, would like to correspond and exchange stamps with South Africans.

**Rendezvous update** — The Thematic Stamp Club of Cape Town has advised that its postal address is PO Box 146, Cape Town 8000.

**Exchange wanted** — Herman Santoso, J1. Jelambar Jaya 3/50, Jakarta 11460, Indonesia, is a keen collector of stamps of Southern African countries, including plate blocks, FDCs and postal stationery. He would like to correspond and offers material from Asian countries as well as thematics in exchange.

SA Philatelist — September 1987

## Johannesburg 1986: the markings of a city

An item destined to become Africana for South Africans of the future recently came into being in Johannesburg through the efforts of a number of far-sighted individuals.

The creative idea was born during Johannesburg 100 when Danny Swart was showing the mayor of Johannesburg, Prof H Rudolph, the PS of J's postmarks display of all post offices operational in the city area during the half-centenary year of 1938. It was the mayor who suggested that something similar should be done to record the centenary year.

On 17 November 1986, through the cooperation of the regional Public Relations Officer and the Postmaster of Johannesburg, all post offices operational in this area affixed their datestamps to each of three cards.

One of these was donated to the Africana Museum, whilst another was placed together with other selected items in a casket which was sealed with instructions to be opened by the mayor of Johannesburg in the year 2086. The third was presented to the PS of J by Prof Rudolph during a social evening held by the society.

The PS of J is looking into the possibility of making copies available for purchase by interested collectors. — **Danie Scheepers**

## Boksburg holds centenary show

A CENTENARY stamp exhibition of 120 frames of invited senior and junior exhibits will be held in the New Civic Hall, Boksburg Town Council buildings, Trichardt Road, from Tuesday 6 October to Saturday 10 October 1987.

In the week the exhibition will be open from 10h00 to 20h00 and on the Saturday, Kruger Day, from 09h00 to 14h00.

The special temporary datestamp for the Boksburg centenary will be used at the exhibition post office.

Enquiries about the exhibition and covers may be directed to Jimmy Mitchell (Tel H (011) 896-2657) or Peter Smith (Tel H (011) 896-1262). The address is PO Box 9202, Cinda Park 1463.

## Make sure of your Paarl covers

THE six-country set of Paarl philatelic exhibition covers will be available at the exhibition in Paarl this month (15-19 September 1987), and from Philatelic Services and Intersapa, Private Bag X505, Pretoria 0001, at R12 (GST included).

This splendid set of the Philatelic Federation contains the official miniature sheets and was described in our August issue, page 150.

## Goeie seëlbeurs in Pretoria gehou

DIE Suid-Afrikaanse Filateliese Handelaarsvereniging (SAFHA) het in Julie 'n eerste seëlbeurs in Pretoria gehou. Tien seëlhandelaars het by die Saterdag-lange beurs in die Boulevard Hotel hul ware aangebied.

SAFHA sê sulke seëlbeurse gaan gereeld in Pretoria gereël word.

**Information sought** — Roger W Parrett, RFD No 14, Box 338, Boscawen, New Hampshire 03301, USA, is researching the photography of fluorescent stamps and is seeking information on the substances used to make South African stamps fluorescent.

179



## Lighthouses for the album

### 16c — Green Point lighthouse

The lighthouse at Green Point in Cape Town was the first solidly constructed lighthouse on the South African coast. It was lit for the first time on the night of 12 April 1824 and has been in use ever since — for over 160 years.

The original installation comprised two separate fixed white lights mounted on top of the masonry tower. These lanterns were equipped with a single wick Argand lamp burning sperm oil. The light issuing from the Argand lamp was reflected by highly polished metal parabolic reflectors known as the catoptric system.

The feeble rays of light emerging from these lanterns were clearly visible for a distance of 10 km.

In 1865 the tower was increased to its present height, about 20 m, and a third order dioptric flashing light was installed. The present optic was installed in 1922 and the light was electrified in 1929. The present 1,5 KW incandescent lamp produces a white flash of approximately 850 000 candelas.

A submarine bell was in use prior to the introduction of the diaphone fog signal in 1926.

Green Point lighthouse was built by Herman Schutte, who also built the Groote Kerk and many other historical structures.

### 20c — Umhlanga Rocks Lighthouse

The fine lighthouse on the Bluff above Port Natal harbour is no more. Yet when it was commissioned in January 1867 it was the only one on the east coast of Africa, its nearest neighbours being in Algoa Bay and at Alexandria, Egypt.

The light was housed on top of a circular cast iron tower 24,6 m high.

The optic apparatus was replaced in 1922 and the light was electrified in 1932, resulting in an increase in candlepower to 3 million candelas.

But, because of extensive corrosion of the cast iron tower, the entire structure was encased with reinforced concrete in 1933.

Large calibre naval guns were mounted on the Bluff near the lighthouse in 1938, and it was feared that the firing of these huge guns would seriously affect the already suspect foundations of the tower. In consequence the light was discontinued in October 1940, and the tower later demolished.

The Bluff lighthouse was replaced by two small automatic lighthouses — Cooper Light, south of Durban near Brighton Beach, and Umhlanga Rocks lighthouse, north of Durban.

Cooper Light was commissioned in July 1953 and is named after H C Cooper, the lighthouse engineer who proposed the twin replacement for the Bluff lighthouse. The Umhlanga Rocks light came into operation in November 1954 and except for the colour of the towers and the character of the lights, these two lighthouses are almost identical in every respect.

**LIGHTHOUSES** have always held a special appeal, and this issue of our magazine is devoted to stories, stamps, postmarks and postcards of lighthouses.

Four RSA stamps will feature famous South African lighthouses — landmarks in more sense than one — on 9 June 1988.

As stamp collectors we salute the lighthouse service — and the lightkeepers of yonder year and of today.

## *They made it special*

MANY people contributed to make this issue of our magazine something special. We name the following:

Archie Atkinson, chairman of the Southern Africa Postcard Research Group

Ken Baker, postal history researcher

James Collocott, lighthouse engineering assistant, SATS head office

Eve Colquhoun, lighthouse thematist, SA Postmark and Postal History Society

Eric Conradie, curator, SA Transport Services Museum

Coreen Fourie, curator, Bredasdorp Museum

Philip Fourie, lighthouse inspector

Wilhelm Grütter, our Cape Town correspondent

George Hofmeyr, National Monuments Council

Leon Jacobson, our Windhoek correspondent

Tom Lawson of Somerset West

Ralph Putzel, author of *The Encyclopaedia of South African Post Offices and Postal Agencies*

Johannes Steyn, retired senior lightkeeper

Harold Williams, retired lighthouse engineer, whose photographs were used for the stamp designs

Friendly people from Postal Services and Philatelic Services.

### 25c — Pelican Point lighthouse

Pelican Point is the northern end of a long, low peninsula of barren dune sand which forms the western side of Walvis Bay, protecting the bay from the Atlantic Ocean.

Almost 10 km due east, across the bay, lies the modern harbour and town of Walvis Bay, part of the Republic of South Africa and the main commercial harbour for South West Africa.

A redundant lighthouse, transferred from Port Elizabeth, was erected in front of the Residency (official dwelling of the resident magistrate) in 1898.

But in June 1915 the local lighthouse moved out of town when a small lantern was mounted on a wooden pile at the northern extremity of the sand peninsula. This was some 200 m north of the present lighthouse tower but due to the peninsula "growing" further into the sea in a northerly direction, this site is now several hundred metres inland from the end of the sand spit.

The present 31 m cast iron tower was manufactured to replace the similar tower at the Bluff in Durban but the Durban replacement was now proceeded with and the tower was erected at Pelican Point in 1931/32.

Improvements to the light followed in 1955, 1959 and 1961, and today Pelican Point has a light of 1 300 000 candelas, a fog signal, radio beacon and radar responder.

Because of the inhospitable nature of the site, the families of the lighthouse keepers do not live at Pelican Point. They are accommodated in modern homes in Walvis Bay. Four lightkeepers are employed at Pelican Point. Three are each on an 8 hour watch and one is on shore leave for one week in every four.

The staff travel from Walvis Bay to Pelican Point by harbour launch.

### 30c — Cape Agulhas lighthouse

The most southerly cape on the continent of Africa was named Agulhas, "Cape of the Needle", by early Portuguese seafarers as

their compass needles behaved strangely when their ships rounded this cape.

Within range of the present light, which in clear night weather can be seen for a distance of 26 nautical miles, the coast is fringed with dangerous reefs on which more ships have been wrecked than on any part of the South African coast.

The light at Cape Agulhas was first lit on the evening of 1 March 1849. The old apparatus was replaced in 1915 and electrified in June 1936.

In 1962 the tower was declared unsafe because the local limestone it had been built with, had seriously decomposed.

A new lighthouse, comprising an aluminium tower of 21 m and electric lamp, was commissioned in February 1968. A senior lightkeeper only is stationed here.

**First day cover — Cape Point lighthouse**

Only the base remains of the original lighthouse, which was an iron tower erected on the highest point, 247 m above high water, and inaugurated on 1 May 1860.

Normally in clear weather this light could be seen seaward for a distance of almost 60 km. Yet, because of its height above sea level, it was often enveloped in mist and cloud.

Thus a new lighthouse was built from 1914 on a site 86 m above sea level. This was lit at sunset on 11 March 1919 by Thurl Cooper, the three-year-old daughter of H C Cooper, the designer and builder of the lighthouse.

The new light was electrified in September 1936.

***Nog 'n scoop: al vier saam***

DIE VIER vuurtoringseëls gaan aanstaande jaar ook as 'n RSA-miniatuurvel uitgegee word. Filateliedienste, aangevuur deur die mooiheid van hierdie seëls, werk aan 'n besondere ontwerp vir die velletjie.

Die seëls is gebaseer op kleurfoto's deur mnr Harold Williams, afgetrede vuurtoringingenieur.

**Drie nasionale monumente**

Drie vuurtorings is nasionale monumente. Die vuurtorings van Groenpunt en Kaap Agulhas is in 1973 geproklameer, en die vuurtoring van Kaap St Francis (met twee huise van vuurtoringwaters daarby) in 1984.

**Full list and light on the subject**

TODAY, the coast of South Africa is almost studded with lighthouses, most of them automatic and incorporating the most advanced navigational aids for shipping.

Our modern lighthouse service has a long history.

The first recorded form of nighttime navigational aid on the South African coast was a primitive wood brazier, erected by Jan van Riebeeck on Robben Island in 1657.

The Afrikaans word "vuurtoring" brings to mind the wood, coal and coke fires that were used before the days of oil lamps, gas burners and electric lights.

The first solidly constructed lighthouse was established in 1824 at Green Point, Cape town, Today the colour scheme of red and white diagonal bands is most effective in making the Green Point tower conspicuous against the built-up background.

It was at Green Point lighthouse that lightkeeping was first taught to South Africans. From here succeeding generations of lightkeepers have carried the torch of tradition associated with the lightkeeping service so successfully that South Africa today has an amenity of which seafaring men can rightfully be very proud.

The early lighthouses employed optical systems of very large dimensions compared with the lenses used in modern lighthouses. A few massive one-ton systems are still in operation, floating on a mercury bath guided by horizontal and vertical rollers.

The light sources used in these large optics were originally wick burners, which were superseded by the petroleum vapour burner.



*The postmarks for each of the four maximum cards will feature the headgear of the relevant lighthouse. The postmarks are for Umhlanga Rocks (20c stamp), Pelican Point (25c) and Bredasdorp (Agulhas lighthouse, 30c). Bredasdorp is the home of the shipwreck museum, full of relics from the Agulhas coast. The Green Point postmark (right) will be used for the first day cover and the 16c maxicard.*



**LIGHTHOUSES · VUURTORINGS**



CAPE POINT

KAAPPUNT

Upon the introduction of electricity all these were replaced by the electric incandescent lamp.

The trend is towards smaller lens systems using high intensity low-powered electric light sources, when an electrical mains supply is not available, or high powered sealed beam units. Optics are mounted on a small table which revolves on roller bearings.

The light flashes — each lighthouse has its own pattern — are supplemented by fog signals, radio and electronic devices.

The Green Point lighthouse was followed by one at Mouille Point in 1842 (scrapped early this century) and that at Cape Agulhas in 1849.

Cape Recife lighthouse, south of Port Elizabeth on the western extremity of Algoa Bay, was commissioned in 1851. In the next year a wooden lighthouse structure was built on Bird Island in Algoa Bay (replaced by a stone structure in 1873).

South Africa's only lightship was moored near Roman Rock at Simonstown in 1845. By 1861 the lightship was replaced by a lighthouse — the only rock lighthouse on our coast — and this tiny structure was manned, with a keeper living in it!

Here is a list of lighthouses, with the date of commission. Those which are manned are indicated by an asterisk. Lights on the coast of South West Africa are included. The list is from north to south to east, anti-clockwise.

Möwe Point, 1979

## Vuurtorings

Terrace Bay, 1979  
Toscanini, 1975  
Cape Cross/Kaap Kruis, 1955  
Farilhao Point, 1975  
Swakopmund, 1903 (German SWA), automated 1956, manned parttime to 1977  
\*Pelikaanpunt/Pelican Point, Walvis Bay, 1915, replaced 1932  
\*Diaspunt, Lüderitz (German SWA), 1910  
Shark Island, Lüderitz, 1903 (a harbour light)  
Port Nolloth, 1909, automated 1981  
Hondeklipbaai, 1936, replaced 1956  
Groenriviermond, Nariep area, Namaqualand, 1987/88 (the lamp apparatus of the 'new' Agulhas lighthouse will be installed here)  
Doringbaai, 1963  
Lambertsbaai, 1941, replaced 1962 (a harbour light)  
Bergriviermond, 1967 (twin lights for fishing vessels entering the Berg River towards Laaiplek and Velddrif)  
Sandy Point, St Helena Bay, 1969 (a harbour light)  
Stompneuspunt, St Helena Bay, 1934  
Cape St Martin, 1977  
Seal Island, west of Cape St Martin, 1979  
\*Cape Columbine, Paternoster, 1936  
North Head, Saldanha Bay, 1939, replaced 1969  
South Head, Saldanha Bay, 1969  
\*Dasseneiland, 1893  
\*Robbeneiland, 1865  
Milnerton, 1960  
\*Green Point, 1824  
\*Slangkoppunt, Kommetjie, 1919  
\*Cape Point/Kaappunt, 1860, replaced 1919  
Roman Rock, Simonstown, 1861, automated 1919 Kaap Hang-  
klip, 1960  
Hermanus, 1954 (a harbour light)  
\*Danger Point, Gansbaai, 1895  
Quoin Point, Elim, 1955  
\*Cape Agulhas, 1849, replaced 1968  
Cape Infante, Witsand, 1979  
Ystervarkpunt, Gourits River mouth, 1964  
\*Cape St Blaize, Mossel Bay, 1864  
Cape Seal (Robberg), Plettenberg Bay, 1950  
\*Cape St Francis, 1878

\*Cape Recife, Port Elizabeth, 1851  
Deal Light, Port Elizabeth, 1973  
Bird Island, Algoa Bay, 1852, automated 1968  
\*Great Fish Point, 1898  
\*Hood Point, East London, 1895  
Nahoon, 1898, replaced 1956 (an anchorage light)  
Cape Morgan, 1964  
Mbashe (Bashee River mouth), 1926, automated 1976 (local operator)  
Cape Hermes, Port St Johns, harbour light 1903, stone structure 1904, automated 1976 (local caretaker)  
South Sand Bluff, 1931  
North Sand Bluff, 1968  
\*Port Shepstone, storm light 1895, lighthouse 1906  
Ifafa Beach, 1980  
Green Point, Umkomaas, 1905, automated 1963  
Cooper Light, Brighton Beach, 1953  
Umhlanga rocks, 1954  
Tugela, 1972  
Port Durnford, 1916 (was never manned)  
Richards Bay, 1979  
\*Cape St Lucia, 1892, replaced 1906  
Cape Vidal, 1985  
Jesser Point, Sodwana, 1986

Thus 17 lighthouses are permanently staffed.

The Mouille Point lighthouse was built atop a pyramid structure in 1842 and replaced with a tower in 1865. It was discontinued in 1908 when the then new breakwater light of Table Bay harbour was commissioned. The tower's foundations are in the grounds of the General Botha, the merchant marine college.

Four lighthouses are on islands — Seal, west of Cape St Martin at the western end of St Helena Bay; Dassen; Robben; and Bird, in Algoa Bay — and one is on a rock, Roman Rock at Simonstown.

Another island, Seal Island in False Bay, had an automatic light from 1970 to 1985.

The Bluff lighthouse at Durban was commissioned in 1867 and discontinued in 1940.

A lighthouse known as The Hill was commissioned in Port Elizabeth in 1861 and is now part of the museum in the Donkin reserve in the city.

## Some light on some unusual postal history

A MINE of information on postal offices and agencies is contained in *The Encyclopaedia of South African Post Offices and Postal Agencies*, compiled by Ralph F Putzel of Cape Town.

Volume I of this three-part work, published in 1986, covers the letters A-E and is of particular interest when one tries to assemble the jigsaw of the postal history of lighthouses.

Some lighthouses — like that at Green Point — were in close proximity to post offices and postal services. Others, more far flung, have a history of being “post offices of sorts”.

Here is a summary of information taken from the *Encyclopaedia* and provided by Mr Putzel.

### Agulhas

A post office opened on 7 July 1853, barely four years after the commissioning of the lighthouse, and a postmaster was appointed.

In official records the office is listed again in 1861-64, but as L'Agulhas. In 1865 it was listed as Agulhas, and it was again listed in 1868.

L'Agulhas was the name again in 1880-83, when postmasters were named, but in 1886 it is listed as a postal and telegraph agency named Cape L'Agulhas.

A 1900 postmark reads L'Agulhas TO (= telegraph office). Officially the postal and telegraph agency reverted to its old name, L'Agulhas, on 1 April 1912.

A postmark of February 1940 reads L'Agulhas/S. Africa, and the office is listed as a postal agency in 1949/50.

About 1952/53 it was again a postal and telegraph agency, re-named Agulhas, as shown by a postmark of September 1953. This postal agency closed on 28 December 1959.

According to official reports the telegraph agency at the lighthouse closed on 27 January 1964.

Meanwhile the seaside village of Agulhas grew in popularity and during the 1960s a seasonal postal agency was opened for the summer holidays, from 18 December to 19 January every year. This was run by a local storekeeper, and Mr Putzel reports the last postmark seen from this office as 1974.

### Cape Point

A telegraph office was opened in March 1877. An entry in the revenue section of the Cape postal reports for 1898, 1899 and 1900 refers to the Cape Point postal agency, yet Cape Point was never listed other than as a telegraph agency.

In *The SA Philatelist* of May 1969, p 101, a postcard is reported with a circular datestamp of Cape Point/C.G.H. dated 28 December 1904 at the upper left of the card's address side. The

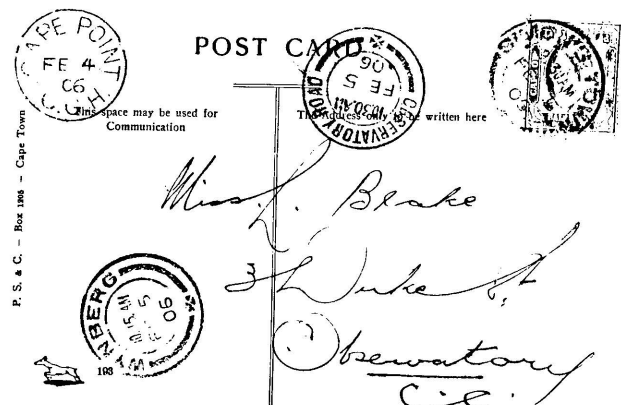




message says: "Was camping here at Xmas & New Year. This card came from the lighthouse right on the Point. I stamped it myself with the P.O. Stamp so it is a curio."

This card was mailed to England from Kloof Street, Gardens, on 25 January 1905, almost a month later.

This use of the Cape Point canceller thus was philatelic, but what about the next one?



Mr Putzel reports a pictorial postcard, showing Cape Point, with on the picture side the Cape Point CGH cds dated 4 February 1906.

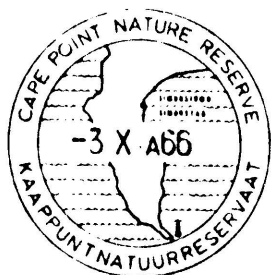
On the address side of the card the same Cape Point cds is at the upper left, dated 4 February 1906. The other marks are:

- Simons Town 9-30 am Feb 5 06
- Wynberg 10-15 am Feb 5 06
- Observatory road 10-30 am Feb 5 06.

The Cape Point CGH cancellation is reported on stamps as late as 1921, and several examples are known on postcards from 1904 onwards.

From 5 November 1923 Cape Point is listed continuously as a telegraph office until renamed Kaappunt during 1955. The telegraph agency closed in 1960.

A special permanent datestamp for Cape Point Nature Reserve was introduced on 3 October 1966. Postcards and other items mailed in the posting box at the Cape Point lookout, near the lighthouse, receive the circular postmark, showing a map outline. The map shows a symbol for the lighthouse. The postmark itself is kept in and applied at the Simonstown post office.



**Cape Recife**

A telegraph office was listed here from 1903, with the name as Cape Receiffe from 1910. The telegraph office was renamed Kaap Receife in 1953.

A circular Cape Receife TO cancellation has been seen on stamps and such stamps may come from telegrams, or from envelopes. The mark is not shown — one example available for illustration would reproduce too poorly.

**The postmark illustrations are published with acknowledgement to the researches of Mr Ralph Putzel.**

**Cape St Francis**

According to the Cape Postmaster General's report, a postal agency was opened at the lighthouse in 1878. This was again listed as a postal agency in 1882 but in 1909 the designation was a postal and telegraph agency.

A Cape barred oval numeral cancellation, number 398 (the numeral enclosed in a square), was found in the Cape St Francis postal and telegraph agency in 1938 and is now in the Post Office Museum in Pretoria.

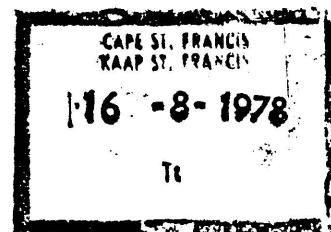


The Cape St Francis postal and telegraph agency was closed on 30 March 1959. Cancellations seen during this period include a single-circle Cape St Francis (without C.G.H.) In 1909; a double-circle Cape St Francis with a little cross and black bars in the lower segment, later 1920s; and double circle with a blank lower segment in 1949.

A telegraph and telephone office opened on 27 January 1964, followed again by a postal and telegraph agency on 21 June 1965. The name of this agency changed to Sea Vista on 29 March 1971.

What happened then, is not clear. A telegraph and telephone office reopened under the old name of Cape St Francis on 7 February 1972, closing in April 1984.

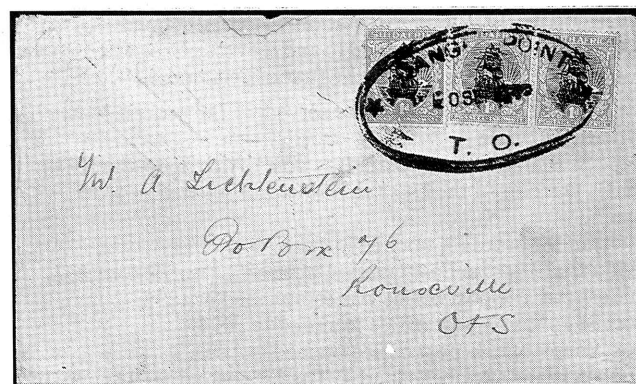
In this latter stage, in the 1970s, mail has been seen cancelled with a rectangular telegraph office datestamp, reading Cape St Francis/Kaap St Francis, and struck in purple.



**Danger Point**

The Cape Postmaster General reported that a post route between Danger Point and Hermanus Petrusfontein (today: Hermanus) was established in 1894. The Danger Point postal agency opened on 1 April 1895 but this was closed on 1 November 1896, on which date it became a telegraph office.

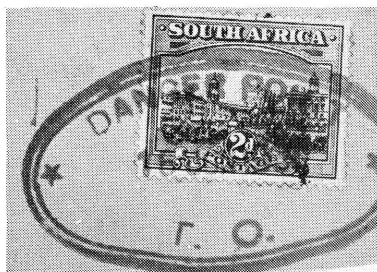
Danger Point remained a telegraph office until a postal and telegraph agency opened on 27 February 1928. The agency closed on 15 December 1947, on which date it became a telegraph and telephone office until this closed on 7 June 1948.



A large black oval strike of the Danger Point T.O. (= telegraph office) cancels three 1d stamps on a cover to Rouxville in the O.F.S. The date is 20 September 1938. (Mrs E Colquhoun).

We illustrate an oval double-bordered TO (telegraph office) datestamp of Danger Point cancelling a 2d stamp on piece in the early 1950s, well after





the telegraph office had closed.

An early Danger Point cancellation is a single circle (fragment illustrated), while a postmark dated 1945 is a double circle without anything in the lower segment.

**Dassen Island**

A telegraph office for Dassen Island was first listed in 1927. In 1932 it was listed as Dassen Eiland. The office was granted special telegraph tariffs from 19 June 1934, and in 1937 the telegraph office was listed as Dassen Eiland Radio. The head office for Dassen Island TO was Cape Town.

It was last listed as a telegraph office in 1976.

Although it has always been a telegraph office, Mr Putzel feels that almost certainly some mail must exist over the years.

Retired lighthouse inspector Sidney Stephens has memories of Dassen Island going back to his boyhood days in the early 1910s. His uncle, Capt Ian Wearin, owned two coasters, *Harrier* and *Ramza*, and held the government contract for guano exploitation.

Young Sid often stayed on the island for some weeks during the annual three-month period when a team of 30-40 workers under a headman gathered guano.

At the time there were “no stamps and no canceller” at Dassen Island, and mail was transported in the tug serving the lighthouse.

In later years Milne & Co of Cape Town has the government contract to collect penguin eggs, again a three-month operation involve a workforce under a headman. The company’s cutter took mail for the mainland to Cape Town.

Dassen Island lighthouse for years had morse contact with the PO radio station at Slangkop, and by covert arrangement private messages — called “memos” — were transmitted in the quiet hours of the night.

Retired senior lightkeeper Johannes Steyn says when he arrived on Dassen Island in 1938 it was no longer a telegraph office. Radio was, however, the staff’s only means of communication with the mainland: the Cape Town radio office was on the grain elevator in Table Bay harbour and was under the control of the harbour authority.

During world War II this station was code-named “Grain”.

Correspondence was routed to and from the Green Point lighthouse and “was sent over by the first official means”.

Other early lighthouses were served by the nearest local post offices. They are —

- Cape St Blaize — the Mossel Bay post office opened in 1848.
- Bluff, Durban — the Durban post office opened in 1850.
- Green Point — part of Cape Town. The post office of Green Point itself, in Main Road, opened in 1846.
- Hood Point — the East London post office opened in 1853.
- Lüderitz — the post office was established in 1895.
- Port St Johns — post office founded in 1894.
- Port Shepstone — post office opened in 1892.
- Robben Island/Robbeneiland — The first postmaster was appointed in 1880, and the post office opened on 1 July 1882. The post office was closed on 11 May 1931. A postal agency opened about 1940 and was converted to a post office in 1950. (But see what Ken Baker found on Bird Island.)
- Simonstown — This was the third post office opened, after Cape Town and Stellenbosch, and received its own postmark already in 1816.
- Slangkop — the Kommetjie postal agency opened in 1905.

In the period 1935 to 1945 Slangkop Radio was listed as telegraph office. Slangkop Radio was essentially a service to shipping. Walvis Bay — the first post office dates from about 1884.

Delving in postal archives, Mr Putzel has found an unusual reference to the **Great Fish Point** lighthouse (in the servicing area of the Bathurst post office).

In the section on branch posts the Cape Postmaster General’s Report for 1905 says that the lighthouse service was converted into a horse post. This postal service, which is not mentioned again later, was possibly established in 1898.

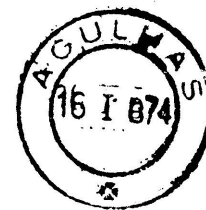
## Vakansiepos, en ’n komende nuwe naam

MEER LIG op die vakansieposkantoor by Kaap Agulhas kom van die Poswese, wat in sy argief gaan delf het om die feite hieroor te kry.

In die *Encyclopaedia of South African Post Offices and Postal Agencies* skryf Ralph Putzel dat daar elke jaar in die hoogsomer ’n tydelike posagentskap by Kaap Agulhas was om vakansiegangers te bedien.

Ja, sê die Poskantoor. Na die sluiting van die Agulhasposdiens was hierdie seisoenale posagentskap soos volg oop:

- 2 Des 1963-31 Jan 1964
- 1 Des 1964-30 Jan 1965
- 1 Des 1965-31 Jan 1966
- 2 Des 1966-27 Jan 1967
- 8 Des 1967-31 Jan 1968
- 11 Des 1969-24 Jan 1969
- 17 Des 1969-17 Jan 1970
- 14 Des 1970-16 Jan 1971
- 13 Des 1971-15 Jan 1972



In die Kersseisoen van 1972/73 is daar nie posgeriewe verskaf nie, maar die volgende somer was die agnetskap weer van 18 Des 1973 tot 18 Jan 1974 oop.

Ons illustreer ’n afdruk van die stempel met een van die laaste datums (met dank aan die Poskantoor). Hoeveel Kerskaart-koeverte met dié stempel sou vandag nog bestaan?

Dit is so dat die naam van die posagentskap sedert 1853 verskeie kere verander is om te pas by die erkende naam of spelwyse wat in stadums gegeld het. Trouens, vroeër vanjaar het die Nasionale Pleknamekomitee besluit dat die naam **Agulhas** weer verander word tot **L’Agulhas**.

Daar gaan ’n permanente spesiale datumstempel vir die vuurtoring ingestel word — en volgende jaar (1988) kom daar ook ’n tydelike spesiale stempel vir die 150e herdenking van Bredasdorp.

## Die ou suiderlig gaan weer skyn

DIE OU Agulhas gaan weer skyn — as vuurtoring, museum en toeriste-besoekpunt.

Die Bredasdorpse Museum het seggenskap oor die ou gebou verkry en die gebou, wat van 1849 tot 1968 as vuurtoring gedien het, word nou gerestoureer.

By voltooiing — dit gaan “binnekort” gebeur — gaan die vuurtoring weer in werking gestel word, met onder in die gebou ’n museumuitstalling van “die lewe van vuurtoringwagters”.

Afgesien van die museumgedeelte is daar planne vir ’n teekamer en ’n spesiale posstempel.

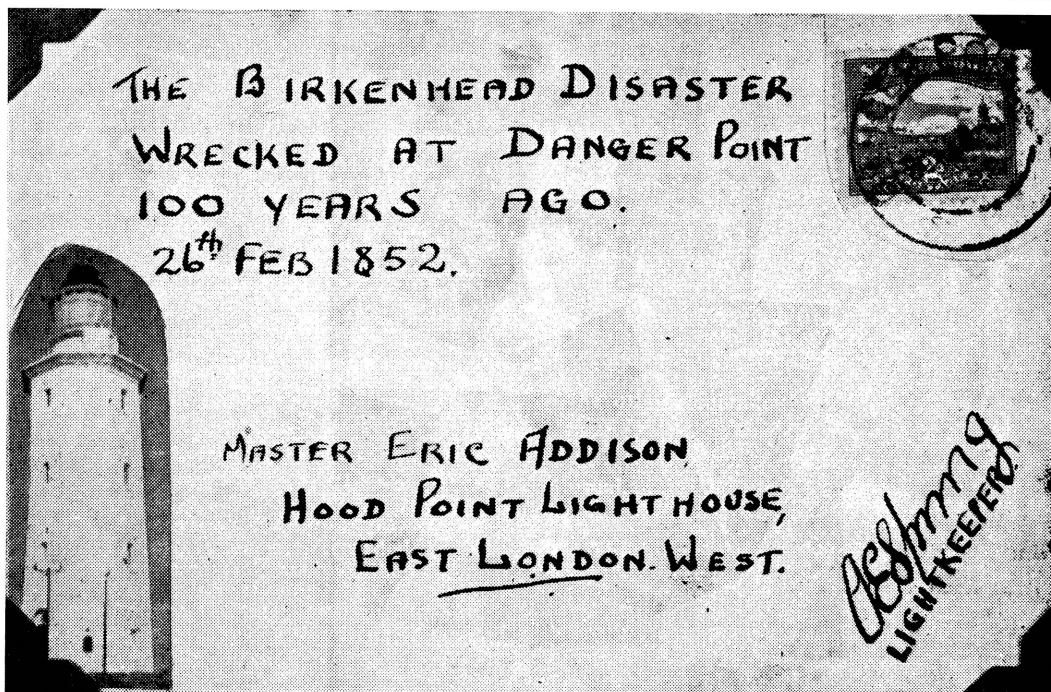
Wanneer die ou lig in ere herstel is, sal die staaltoring van 1968 afgetakel word. Hierdie lamp gaan dan na die nuwe toring aan die Groenriviermond in Namakwaland.

Die Bredasdorpse Museum het skepswrakke as tema en bestaan uit drie dele:

- \* ’n Huis met meubels uit wrakke soos *Queen of the Thames* (1872), *Clan McGregor* (1902), *Sceptre* (1925) en *Oriental Pioneer* (1974).
- \* ’n Skepswraksaal waarin die storie van wrakke vertel word met voorstellings, gebruikartikels, boegbeelde, kanonne, ankers, bv van die *Zoetendal* (1673), *Dundrennan* (1895) en *Wafra* (1971).
- \* ’n Waenhuis wat ou rytuie bevat en konsentreer op die geskiedenis van Bredasdorp.

Die Agulhas-toring gaan die vierde deel van die museum wees.

# Danger Point: the stirring story behind a cover



THE GREAT Birkenhead disaster is commemorated by a novel cover posted from Danger Point lighthouse one hundred years after the tragedy.

On 26 February 1852 the paddle steamer HMS *Birkenhead* struck a rock 1,5 km from the land tip now known as Danger Point.

On board were 631 people, including reinforcements for the Eighth Border War, bound for the Buffalo river (East London).

It was 02h00, and the vessel sank almost immediately. It was possible to launch only three small boats, into which women and children were ushered.

The troops were given permission to try and swim for the shore, but two officers implored them to stand fast as the soldiers might swamp the little boats in the surf. The men heeded the call, and a total of 438 people died.

A century later a commemorative service was held at the Danger Point lighthouse, where a plaque about the *Birkenhead* disaster was unveiled in 1938.

To commemorate the event, Mr J C Addison, lighthouse keeper at Hood Point in East London, addressed three covers to his son. The covers were franked with a 2d stamp, cancelled with the Danger Point circular datestamp of 26 February 1952 and signed by Mr A E Spring, the lightkeeper and postal agent.

We illustrate such a cover. Another was illustrated in *The SA Philatelist* of August 1952, p 140. It is believed that the third was given to a museum in Cape Town by a collector.

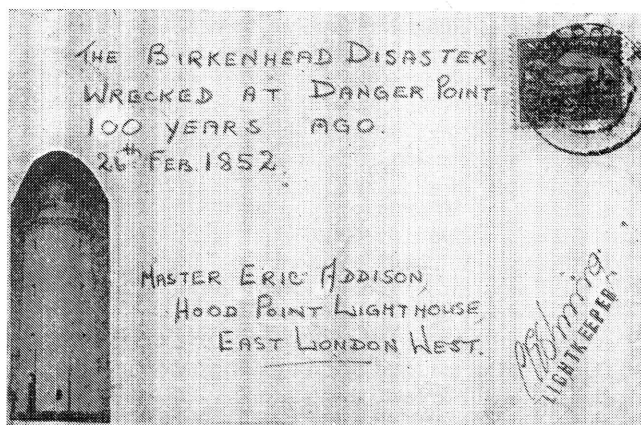
Mr Spring, by the way, was assistant lightkeeper at Danger Point when the plaque was erected in 1938.

When he reported the cover in *The SA Philatelist* in 1952, Mr Addison described some postal arrangements at lighthouses:

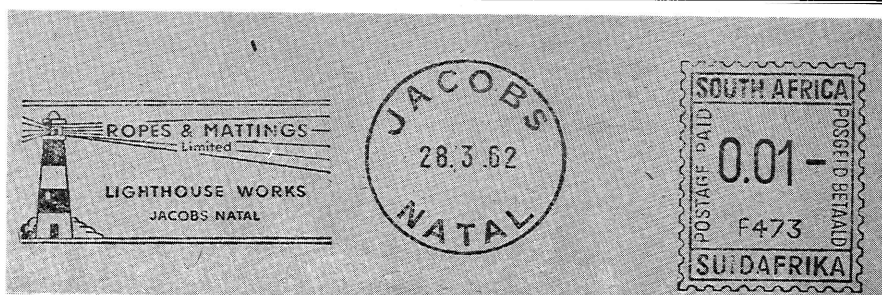
“Today a postal agency is operated at the office in the base of the tower, being under the control of the lightkeeper. Postal records at Danger Point go back as far as 1914, and it was evidently in use before that date . . .

*The private commemorative cover of the centenary of the wreck of the Birkenhead, illustrated in The SA Philatelist of August 1952. Another similar cover is also pictured in reduced size.*

“In the past a fair number of lighthouses in the more isolated spots around the coast operated as postal agencies, but most were closed as such in 1939 for security reasons and have not been again re-opened. At the moment there are only three lighthouses in South Africa which are also postal agencies.”



**The lighthouse service is provided by South African Transport Services — and it is a service worthy of a medal, such as those pictured on our back page.**



## A lighthouse on a meter

*Here is a 1962 commercial meter mark. It is inscribed Ropes & Mattings Limited, Lighthouse Works, Jacobs, Natal. Jacobs is an industrial area south of Durban.*

## Sid (84) remembers the flagging days

by Tom Lawson

(Stellenbosch-Filateliëvereniging)

THERE is a multitude of stories concerning South Africa's lighthouse service, and it was my privilege to chat with Mr Sidney Stephens, who was South Africa's inspector of lighthouses for many years.

It was most enjoyable and entertaining as he dipped into the past recounting stories, some very humorous and some serious, connected with his long and illustrious career with the lighthouse service.

Mr Stephens (84) retired 24 years ago after having been in the service for 41 years.

His is a wonderful story of living as a safe keeper of the oceans and all that travel in them. He disagrees vehemently that it is a lonely life.

Before the advent of radio communication, a number of South African lighthouses were registered with Lloyds of London as international signal stations. These included Cape Point, Danger Point, Cape Agulhas, Cape St Francis and Cape Hermes (Port St Johns).

During daylight ships passing within sight of these lighthouses would signal, using flags (Alpha code) — giving its name and destination with a request that its agents be notified.

Having acknowledged the request, the lighthouse staff would transmit a telegram "collect" (the recipient to pay) to the agents via post office channels. Some shipping agents deposited a cash float with the keepers to pay for the telegrams.

During the night signals from ship to lighthouse would be exchanged by way of morse lamp. This apparently was much quicker means as it obviated having to search the flat code book to identify the signal!

Lighthouses with no immediate access to a postal facility were serviced by an accredited agent who was on contract to the lighthouse service (also for provisions, etc). The agent visited the lighthouse weekly to collect the mail bag and bring incoming mail.

Outgoing mail was cancelled with an official permanent post office canceller bearing the name of the lighthouse. Some stations accepted mail for despatch, sold stamps and sent telegrams from local inhabitants.

Bredasdorp post office served Cape Agulhas, Simonstown PO served Cape Point and Hermanus PO served Danger Point.

With the inception of radio communication between ships and shore, the flag system of signalling information and instructions slowly petered out.

Dassen Island, Robben Island (which had its own post office) and Bird Island were served by tugs visiting once a month. On occasions "friendly" coasters would collect mail for Dassen Island at the lighthouse office in Cape Town, deliver and collect outgoing mail.

Nowadays these isolated stations are served by helicopters belonging to Court Lines and chartered by the lighthouse service. Similarly, the helicopters are used to evacuate people in need of medical attention.

At Slangkop, near the lighthouse, a post office radio station is located, every day broadcasting a world news bulletin to shipping in the area.

Mr Stephens remembers his work at the Cape Point lighthouse in 1926, when it was part of his duty to adjust the date of the postal canceller every morning, sell stamps and accept telegrams. He would then dictate the telegrams over the single telephone line to the post office in Simonstown.

Every month the contractor collected the telegrams which had been sent and handed the telegram forms to the Simonstown postmaster, for his checking and balancing of books.

After the demise of the Danger Point postal agency the postal canceller was kept as the official handstamp of the lighthouse. Where letters were franked with this official canceller, the Gansbaai post office also applied its own cancellation.

## Those were the years

by Johannes Steyn

(retired senior lightkeeper, now living in Mossel Bay)

WHEN I joined the lighthouse service in May 1936 conditions had already improved to the extent that postal agencies at lighthouses had been done away with.

The arrangement was for mail to be collected at the nearest post office by the contractor who delivered provisions and supplies. This was usually at weekly intervals.

In the early stages roads were practically non-existent, and oxen, horses and donkeys were the means of conveyance to the far-flung lighthouses. As roads were improved, motor vehicles became the mode of transport.

Let me tell you about the places where I served.

At Pelican Point, Walvis Bay, way back in 1936, mail was directed to the Port Superintendent and was sent over by boat once a week. In later years the lighthouse at Pelican Point was supplied with its own boat and twice weekly trips were made by staffers, who collected mail at the Walvis Bay post office.

It was different at Cape Columbine, north-west of Vredenburg, in the years 1943-44. Mail was delivered to the lighthouse by the local grover at Paternoster once a week. At the time he was using a cart and donkeys.

When this proved to be most unsatisfactory, the SA Railways and Harbours Administration placed a light delivery vehicle at Cape Columbine and the staff were allowed a weekly trip to Vredenburg.

The Dassen Island staff were granted ten tug trips a year to Cape Town before World War II broke out. All mail was collected at the Green Point lighthouse and placed aboard the tug, while groceries and supplies were delivered directly to the tug.

During the war the tugs could not be spared, as they had to help with wartime convoys. There was also the ever imminent danger of U-boats, and the Dassen Island staff were left to scheme as best as they could. This was done through the wonderful co-operation of Thesens Coasters with its cargo carrying motor vessels.

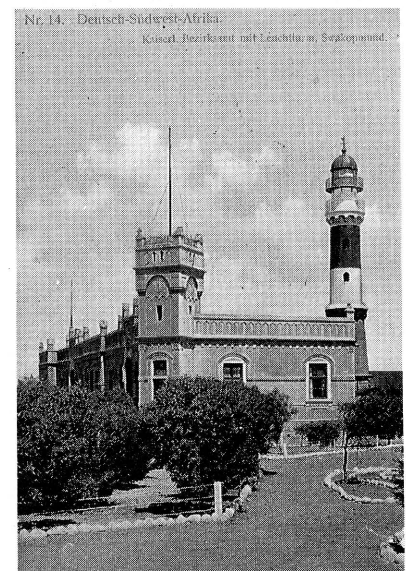
These arrangements worked until the end of the war, when the tug trips were reinstated — not ten, but twelve per year.

At a later stage this was superseded by monthly helicopter trips. All mail was still handled at Green Point, which had the bag placed in the helicopter.

At the other lighthouses where I served we had either a contractor or a departmental vehicle to do the necessary trips to the nearest post office: weekly in the case of contractors and twice weekly with the official vehicles.

Yes, often mail took a long time, but "we did a long work" and we had patience.

An attractive colour card from German South West Africa, inscribed "Kaiserl. Bezirksamt mit Leuchtturm, Swakopmund", being number 14 in the series on Deutsch-Südwest-Afrika published by K Schulte of Swakopmund. (Leon Jacobson).



REPUBLIC STAMPS & COIN ACCESSORIES (PTY) LTD  
Co Reg. no : 82/02335/07

P.O. BOX 260325, EXCOM, 2023, JOHANNESBURG  
SHOP 247, RED ROUTE, LOWER LEVEL, CARLTON CENTRE, JOHANNESBURG  
TEL : (011) 331-9831/2 or 331-7751

\*\*\* PRICES QUOTED EXCLUDE GST \*\*\*  
\*\*\* ALL PRICES ARE SUBJECT TO CHANGE WITHOUT NOTICE \*\*\*  
The prices quoted are not necessarily those that will be charged, due to the fluctuating exchange rates  
Postage, packing & insurance costs are included

ARRICATORS

Packets of 100, quanned, in black, red, green, blue, yellow or white 1.60

APPROVAL CARDS

Have dealer display cards, clear strips on black card, 210x148mm (A5)  
501-5 Cards of 1 strip to 5 strips Each card 1.65  
512 Haveid covers for above Each 1.65  
520 Haveid red or black display box for above Each 31.20  
540 Haveid C6/F 158x113mm 3 strip black card with clear cover, boxed Per 100 56.00  
500 Prinz C6 158x112mm 3 clear strips black card without cover Per 100 40.00  
550 Prinz C6 158x112mm 3 clear strips black card with clear cover Per 100 48.00  
450 Prinz 147x85mm 2 clear strips black card with clear cover, boxed Per 100 32.00  
6060 Prinz Stock card album, 40 black cards, each with 2 clear strips, card-size 155x85mm single hinged with dust cover 28.80

COIN ALBUMS & PAGES - IDEAL RANGE

CO/B Binder padded all around with spine pocket & inside triangular pocket with Krugerrand emblem in gold on front cover 7.92  
CP/12 12 division page, 45mm diameter, 185x210mm Each 1.05  
CP/20 20 division page, 36mm diameter Each 1.05  
CP/30 30 division page, 26mm diameter Each 1.05  
CP/48 48 division page, 20mm diameter Each 1.05  
CP/MIX 20(36mm)-30(26mm)-48(20mm) page Each 1.05  
CP/2 2 division page, height 100mm, width 161mm Each 0.85  
CB/BB White backing board interleaving Each 0.25  
CP/CC Binder with 2 of each 12,20,30,48 & 2 division pages with 8 white backing boards interleaving 17.60  
CP/P Coinindex coin pockets with indexes Per 100 40.00  
CD/B Coinindex box only 24.00  
CD/CB Coinindex box +100 coinindex coin pockets & indexes 56.00  
CP/2x2 Double coin pockets, 44mm diameter Per 100 28.80  
CIF45 Single coin pocket with flap, plastic, 45mm diameter Per 100 28.80  
CIAD Self adhesive coin holders for coins of 20mm to 39mm diam : 20mm, 22.5mm, 25mm, 27.5mm, 30mm, 35mm, 39mm Per 50 28.80  
CIADP Loose pages for above Per 10 16.00  
CIADB Coin binder for above 13.60  
KA-BE coin trays, sizes 1, 15, 24, 40, 54, 70, mix 61.60  
KA-BE coin box suitcase (includes & holds 6 trays) 560.00

MEDAL ALBUMS & POCKETS

B/B Banknote binder 10.40  
B/1 One division page Per 10 8.80  
B/2 Two division page Per 10 8.80  
B/3 Three division page Per 10 8.80  
B/4 Four division page Per 10 8.80  
BP/BB Banknote interleaving white board Per 10 4.00  
M/B Medal binder padded all around 12.00  
M/PP Medal pages Per 10 10.40  
M/P Medal pockets Per 100 33.60

COLOUR GUIDES/KEYS

0252 Stanley Gibbons colour guide 9.60  
2530 Stanley Gibbons colour key 19.20  
Michel colour guide (158 colours) 24.00  
Methuen handbook of colour (1266 colour samples) 64.00

COUNTRY TITLES

2547 Stanley Gibbons quanned whole world country titles 9.60

EXHIBITION COVERS - IDEAL RANGE

Sizes : 285mm(Ht)x220mm(W), fits all 22 ring pages Per 50 34.40  
300mm x 257mm, fits all Lindner & Safe pages Per 50 34.40  
300mm x 233mm Per 50 34.40

FIRST DAY COVER ALBUMS - IDEAL RANGE

MAGNUM FDC ALBUM (2 metal screw posts)  
MAG/B Binder : padded all around with FDC on the spine, with pocket 8.80  
MAG/1 Page : 1 division polypropolene page Each 0.47  
MAG/2 Page : 2 division polypropolene page Each 0.47  
MAG/C Complete album : binder with 25x2div + 5x1div = 30 pages 19.20

MAXI-CARD ALBUM (325x290mm)  
MAX/B Binder : padded all around, spine & inside triangular pocket 10.40  
MAX/4 Page : 4 div., 150x110mm per div, 313x 246mm total Each 0.95  
MAX/C Complete album : binder with 15 maxi-card pages 18.40

FOOLSCAP FDC ALBUM (345x256mm)  
FOO/B Binder : padded all around, spine & inside triangular pocket 10.40  
FOO/1 Page : 1 division 340x210mm Each 0.95  
FOO/2 Page : 2 division Each 0.95  
FOO/3 Page : 3 division Each 0.95  
FOO/C Complete album : binder with 8x3div, 5x2div, 2x1div = 15 pages 18.40

LARGE FDC ALBUM (325x290mm)  
LAR/B Binder : padded all around, spine & inside triangular pocket 10.40  
LAR/1 Page : 1 division 300x260mm Each 0.95  
LAR/2 Page : 2 division Each 0.95  
LAR/C Complete album : binder with 14x2div + 1x1div = 15 pages 18.40

MEDIUM FDC ALBUM (290x250mm)  
MED/B Binder : padded all around, spine & inside triangular pocket 8.80  
MED/1 Page : 1 division 265x223mm Each 0.75  
MED/2 Page : 2 division Each 0.75  
MED/C Complete album : binder with 14x2div + 1x1div = 15 pages 16.80

SMALL FDC ALBUM (259x247mm)  
SMA/B Binder : padded all around, spine & inside triangular pocket 7.20  
SMA/1 Page : 1 division 241x208mm Each 0.63  
SMA/2 Page : 2 division Each 0.63  
SMA/C Complete album : binder with 14x2div + 1x1div = 15 pages 16.00

MULTI-RING FDC ALBUM (22 ring)  
MUL/B Binder : padded all around, 305x265mm 20.80  
MUL/S Slipcase for the binder 14.40  
MUL/1 Page : 1 division 280x231mm Each 1.05  
MUL/2 Page : 2 division Each 1.05  
MUL/3 Page : 3 division Each 1.05  
MUL/C Complete album : binder, slipcase & 15 mixed pages 40.00

GUILLOTINES

604 Haveid / Showguard (large) 150mm 64.00  
605 Haveid / Showguard (small) 94mm 40.00  
601 Haveid cutter with glass perforation ruler 16.00

GLACINE PACKETS

GLAC/S Small : 73x83mm Per 100 3.50  
GLAC/M Medium : 102x165mm Per 100 4.50  
GLAC/L Large : 121x171mm Per 100 5.50

HINGES

IH/1000 Ideal : 1000 pre-folded, acid-free gum 2.08  
IH/500 Ideal : 500 pre-folded, acid-free gum 1.60  
48/164 Dennison : 1000 pre-folded 2.08  
7041 Prinz : 1000 pre-folded 2.08  
2551 Stanley Gibbons : 1000 pre-folded 3.04  
2553 Stanley Gibbons : 1000 straight unfolded 2.64  
2552 Stanley Gibbons : 500 straight unfolded 1.60

MAGNIFYING GLASSES

M50 Flash light, 2.5x, 45max90 mm, brown & yellow, 2C batteries, boxed 36.00  
M100 Flash light, 10x compound lense, 30mm, with scale in mm increments, black & silver, 2C batteries, boxed 36.00  
M170 Flash light, 7x compound lense, 30mm, with scale in mm increments, yellow & silver, 2C batteries, boxed 24.80  
M1000 Flash light, 15x, 15mm, black, 2C batteries, boxed 26.40  
6301L Illuminated balloon giant, 3x, 90mm, yellow, silver & black, 2C batteries, boxed 26.40  
2500 Rectangular glass, 3x, 100x50 mm, black or grey, ambidextrous handle, boxed 26.40  
1760 Large goose-neck, 2x, 120mm diameter, silver & black, boxed 88.00

|           |  |       |
|-----------|--|-------|
| 1650      | Small goose-neck, 3x, 90mm diameter, silver & black, boxed   | 56.00 |
| 1630      | Stand magnifier, 2.5x, 75mm diameter, silver & black, boxed  | 39.20 |
| 750       | Small ruler bar, 2x, 10x120mm, in elastic pouch  | 6.16  |
| L60       | Round optically ground lens, 4x, 60mm diameter, black handle, clear frame, orange & black box              | 6.00  |
| L80       | Round optically ground lens, 3x, 60mm diameter, black handle, clear frame, orange & black box              | 7.60  |
| L110      | Round optically ground lens, 3x, 110mm diameter, black handle, clear frame, orange & black box             | 15.20 |
| L130      | Round optically ground lens, 3x, 130mm diameter, black handle, clear frame, orange & black box             | 16.80 |
| L8545     | Oblong optically ground lens, 3x, 85x45mm, black handle, clear frame, orange & black box                   | 11.20 |
| L12560    | Oblong optically ground lens, 3x, 125x60mm, black handle, clear frame, orange & black box                  | 18.40 |
| HLM       | Oblong plastic rim & handle with 25x sweet spot, 3x lens, 38x50mm, not boxed                               | 2.40  |
| LU        | Pocket magnifier, leather pouch, key ring type, 3+3x, 15mm lens, not boxed                                 | 4.80  |
| STAL10    | Magnifier stand, black plastic rim, perspex base, 10x, 30mm diameter, 15mm scale, orange & black box       | 6.32  |
| STAL-2000 | Magnifier stand, black plastic rim, perspex base, 4x, 55mm diameter, orange & black box                    | 8.80  |
| SL2000    | Pocket magnifier, 3x, 4x, 6x, 9x lenses, 45mm diameter, boxed  | 8.80  |
| TLD       | Pocket magnifier, 6+6x double lens, 20x55mm, not boxed   | 12.00 |
| TLEN      | Pocket magnifier, 3.5x, 50mm diameter, not boxed   | 4.00  |
| RA        | Spectacle reading aids, +0.25 DPT to +4.00 DPT (all 0.25 increments available), each with individual pouch | 24.00 |
| 7090      | Metal loop, 20x, 20mm diameter, acromatic glass lens, leather casing, boxed                                | 48.00 |
| 7050      | Metal loop, 10x, 10mm diameter, jeweller's glass lens, plastic pouch, not boxed                            | 24.00 |
| 7020      | Metal loop, 10x, 13mm diameter, jeweller's glass lens, boxed   | 16.00 |
| 7020W     | Metal loop, 10x20x, 10x8mm diam, jeweller's glass lens, boxed  | 40.00 |
| 7050W     | Metal loop, 10x15x, 25x13mm diameter, jeweller's glass lens, plastic pouch, not boxed                      | 56.00 |
| US        | U-Stand, 3.5x, 45mm diameter, upside down u, tortoise shell rim, boxed                                     | 9.20  |
| 3120      | Pocket magnifier, 3.5x, 45mm diameter, round glass, brown leather pouch, boxed                             | 7.20  |
| 7521      | Small linen tester, 10x, 10mm diameter, nickel finish, boxed   | 16.80 |
| 7551      | Large linen tester, 7.5x, 25mm diameter, nickel finish, boxed  | 31.20 |
| 7550      | Large linen tester, 7.5x, 25mm diameter, black finish, boxed   | 39.20 |
| 7552      | Large linen tester, 7.5x, double lens, 25mm diameter, black finish, boxed                                  | 42.40 |
| 7650      | Large linen tester, 7.5x, 25mm diameter, with needle, black finish, boxed                                  | 47.20 |
| 6500      | Neck magnifier, plastic frame, 2x, 100mm diameter, glass lens, boxed                                       | 26.40 |
| 7501      | Lumagny pen flash light, 2x, 30mm diameter, 2 penlight batteries, boxed                                    | 8.80  |
| 7503      | Lumagny pen flash light, 2x with 4x sweet spot, 30mm diameter, 4 penlight batteries, boxed                 | 24.80 |
| 7504      | Moltex adjustable, 8x, 24mm diameter, focus, clear base, boxed   | 38.40 |
| SM/CC     | Sheet magnifier, credit card size, 3x, 85x55mm, clear vinyl cover  | 4.80  |
| SM/A6     | Sheet magnifier, 140x100mm, blue vinyl cover   | 7.20  |
| SM/A4     | Sheet magnifier, 280x220mm, plastic cover  | 8.80  |
| 7210      | Eye loop, 3x, 30mm diameter, single lens, boxed  | 8.80  |
| 7300      | Eye loop, 10x, 25mm diameter, single lens, boxed   | 13.60 |
| BM100     | Head band binocular magnifier, 2.7x, boxed   | 79.20 |

PAGES - IDEAL 22 RING FORMAT

---

Format is grey quadrille with grey border, 281x285mm, 160qsm

Deluxe padded binder in 6 colours (black, tan, brown, green, blue, red) 20.80

Deluxe slipcase for the above binder 14.40

Binder complete with 50 unfaced pages 33.60

Binder complete with 50 unfaced pages plus slipcase 44.80

Binder complete with 40 faced pages 48.00

Binder complete with 40 faced pages plus slipcase 57.60

Pages : unfaced Per 25 7.20

Pages : faced Per 10 5.60

Pages : Glacine interleaving punched 22 ring Per 50 26.80

Exhibition covers for above pages, 285mm (height) x 220mm (width) Per 50 34.40

PERFORATION GAUGES

---

|        |  |       |
|--------|--|-------|
| ID/T   | IDEAL transparent  | 1.12  |
| JRD/T  | JRD Trafalgar (blue with UK watermarks indicated)              | 2.40  |
| 2534   | Gibbons "Instanta" (accurate, practical, simple to use, cased) | 12.00 |
| 2533   | Gibbons Thirkel (position finder)                              | 12.00 |
| ID/CP6 | Cancellation Postal Gauge                                      | 12.00 |

|          |   |  |        |
|----------|---|--|--------|
|          |   | PENS   |        |
|          |   | ----   |        |
| 503      | Havid glue for mounts   |  | 4.80   |
| 620      | Havid qulestick & profiled ruler  |  | 16.00  |
|          | Havid qulestick pen   |  | 15.00  |
|          | Phosphor Security marker pen  |  | 14.32  |
|          | Philatelic pen (writes on any colour paper)   |  | 20.80  |
|          |   | PHOTO CORNERS                                |        |
|          |   | -----  |        |
| 1380     | Herma Transperal (self adhesive clear mounts)   | Per 250                                      | 6.96   |
| 1301     | Herma Transperal (quamed clear mounts)  | Per 120                                      | 16.00  |
|          | Veha corner mounts, boxed   | Per 100                                      | 6.40   |
|          | Kikusui self adhesive mounts, boxed   | Per 100                                      | 1.92   |
|          |   | PRE-PRINTED ALBUMS                           |        |
|          |   | -----  |        |
|          | IDEAL : SWA 1879 - 1984, binder & slipcase - Standard   |  | 74.13  |
|          |   | - Crystal                                    | 131.95 |
|          | : SWA 1985/6 supplement - Standard  |  | 2.56   |
|          |   | - Crystal                                    | 7.68   |
|          | IDEAL : HOMELANDS (Bophuthatswana, Venda, Ciskei, Transkei) 1976-1984, binder & slipcase - Standard |  | 77.55  |
|          |   | Crystal                                      | 149.23 |
|          | : HOMELANDS 1985/6 supplement - Standard  |  | 10.24  |
|          |   | - Crystal                                    | 30.72  |
|          |   | Standard - no mounts ; Crystal - with mounts |        |
|          |   | -----  |        |
|          |   | STANLEY GIBBONS PUBLICATIONS                 |        |
|          |   | -----  |        |
| 0281(88) | Part 1 : British Commonwealth 1988  | Now available                                | 99.96  |
| 2831     | Part 2 : Austria & Hungary 3rd (1986)   |  | 49.25  |
| 2832     | Part 3 : Balkans 3rd (1987)   |  | 60.26  |
| 2833     | Part 4 : Benelux 2nd (1983)   |  | 90.75  |
| 2834     | Part 5 : Czechoslovakia & Poland 3rd (1985)   |  | 54.75  |
| 2835     | Part 6 : France 2nd (1982)  |  | 49.25  |
| 2836     | Part 7 : Germany 3rd (1987)   |  | 60.75  |
| 2837     | Part 8 : Italy & Switzerland 3rd (1986)   |  | 60.26  |
| 2838     | Part 9 : Portugal & Spain 2nd (1984)  |  | 63.26  |
| 2839     | Part 10 : Russia 3rd (1986)   |  | 79.95  |
| 2840     | Part 11 : Scandinavia 2nd (1982)  |  | 32.75  |
| 2841     | Part 12 : Africa since independence A-E 2nd (1983)  |  | 54.75  |
| 2842     | Part 13 : Africa since independence F-M 1st (1981)  |  | 46.76  |
| 2843     | Part 14 : Africa since independence N-Z 1st (1981)  |  | 57.50  |
| 2844     | Part 15 : Central America 2nd (1984)  |  | 63.26  |
| 2845     | Part 16 : Central Asia 2nd (1983)   |  | 49.25  |
| 2846     | Part 17 : China 3rd (1986)  |  | 46.76  |
| 2847     | Part 18 : Japan & Korea 2nd (1984)  |  | 52.25  |
| 2848     | Part 19 : Middle East 3rd (1986)  |  | 90.75  |
| 2849     | Part 20 : South America 2nd (1984)  |  | 68.75  |
| 2850     | Part 21 : South East Asia 2nd (1985)  |  | 63.26  |
| 2851     | Part 22 : United States of America 2nd (1985)   |  | 41.25  |
| 2881(88) | Stamps of the World Vol I (A-J) 1988  | Now available                                | 72.75  |
| 2882(88) | Stamps of the World Vol II (K-Z) 1988   | Due Oct 1987                                 | 72.75  |
|          |   | Commonwealth QE II Series                    |        |
|          |   | -----  |        |
| 2869     | Australia & Dependencies 1st (1986)   | OUT OF PRINT                                 | 21.75  |
| 2870     | Cyprus, Gibraltar, Malta 1st (1986)   |  | 21.75  |
| 2871     | Far East 1st (1986) Brunei, Hong Kong, Malaysia, Singapore  |  | 24.75  |
| 2872     | New Zealand & Dependencies 1st (1986)   |  | 24.75  |
| 2873     | Canada 1st (1986) includes Bermuda  |  | 24.75  |
| 2874     | Western Pacific 1st (1986) includes Papua/New Guinea  |  | 24.75  |
| 2855     | Collect Channel Islands & Isle of Man 3rd (1986)  |  | 17.00  |
| 0289     | Collect British Stamps 39th (1987)  | Due Nov 17th 1987                            | 12.50  |
| 2887     | Great Britain Concise Stamps 2nd (1987)   |  | 27.50  |
| 2864     | Collect Birds on Stamps 1st (1982)  |  | 27.26  |
| 2865     | Collect Birds on Stamps Supplement 2nd (1983/4)   |  | 5.51   |
| 2852     | Collect Mammals on Stamps 1st (1986)  |  | 41.25  |
| 2888     | Collect Railways on Stamps 1st (1986)   |  | 41.25  |
| 0285     | Great Britain Specialised Vol 1 8th (1985)  |  | 65.75  |
| 0286     | Great Britain Specialised Vol 2 7th (1986)  |  | 65.75  |
| 2810     | Great Britain Specialised Vol 3 6th (1985)  | OUT OF PRINT                                 | 60.26  |
| 2820     | Great Britain Specialised Vol 4 4th (1985)  |  | 62.25  |
| 2825     | Channel Islands Specialised 2nd (1983)  |  | 45.50  |
| 2858     | Falkland Islands & British South Atlantic Islands 1st (1985)  |  | 41.25  |
| 2829     | S6 Postcard Catalogue (1987)  |  | 32.75  |
| 2859     | Royal Wedding & checklist   |  | 41.25  |
| 2740     | Philatelic Terms Illustrated 2nd (1987)   |  | 41.25  |
| 2772     | Enjoy Stamp Collecting  |  | 3.00   |
| 2598     | S6 Stamp Collector's Diary (1987)   |  | 15.50  |

|      |   |       |
|------|---|-------|
| 2760 | Stamp Collecting : How to start                           | 9.60  |
| 2761 | Stamp Collecting : How to identify stamps                 | 9.60  |
| 2762 | Stamp Collecting : How to collect by theme                | 6.86  |
| 2763 | Stamp Collecting : How to arrange & write up a collection | 21.50 |
| 2764 | Stamp Collecting : A guide to modern philately            | 41.25 |

Stamp Albums - Springback Loose leaf

TOWER

Red, green or black gold-blocked binder. Leaves 27.8x24.7cm. Boxed

|      |                            |              |
|------|----------------------------|--------------|
| 0331 | Tower White 100 page album | 90.98        |
| 0332 | Tower White Extra Leaves   | Per 50 22.50 |
| 0333 | Tower Binder only          | 71.40        |

SENATOR MEDIUM

Red, green or black binder. Leaves 25.9x21.9cm

|      |                                    |              |
|------|------------------------------------|--------------|
| 0384 | Senator Medium White 50 page album | 64.88        |
| 0385 | Senator Medium White Extra Leaves  | Per 50 19.20 |
| 0388 | Senator Medium Binder only         | 53.78        |

SENATOR STANDARD

Red, green or black binder. Leaves 27.8x24.7cm

|      |                                       |              |
|------|---------------------------------------|--------------|
| 0386 | Senator Standard White 100 page album | 97.50        |
| 0387 | Senator Standard White Extra Leaves   | Per 50 25.73 |
| 0389 | Senator Standard Binder only          | 75.00        |

SIMPLEX MEDIUM

Red or green binder, gold blocking on spine. Leaves 25.9x24.4cm

|      |                                    |              |
|------|------------------------------------|--------------|
| 3810 | Simplex Medium Cream 50 page album | 64.88        |
| 3811 | Simplex Medium Cream Extra Leaves  | Per 50 19.20 |
| 3814 | Simplex Medium Binder only         | 53.78        |

SIMPLEX STANDARD

Red or green binder, gold blocking on spine. Leaves 27.8x24.7cm

|      |                                       |              |
|------|---------------------------------------|--------------|
| 3812 | Simplex Standard Cream 100 page album | 97.50        |
| 3813 | Simplex Standard Cream Extra Leaves   | Per 50 25.73 |
| 3815 | Simplex Standard Binder only          | 75.00        |

NUBIAN

Black binder faced with transparent paper. Leaves 27.8x24.7cm

|      |                                 |              |
|------|---------------------------------|--------------|
| 3836 | Nubian Black 25 page album      | 106.95       |
| 3837 | Nubian Black Faced Extra Leaves | Per 25 42.38 |
| 3838 | Nubian Binder only              | 75.00        |

UTILE

Red or green binder. Special double linen-hinged transparent faced leaves, 27.8x24.7cm

|      |                                |              |
|------|--------------------------------|--------------|
| 3821 | Utile White 25 page album      | 109.20       |
| 3823 | Utile White Faced Extra Leaves | Per 10 32.63 |
| 3822 | Utile Binder only              | 75.00        |

Transparent Interleaving

Glazed transparent paper for Tower, Senator, Simplex or similar types of albums

|      |                         |       |
|------|-------------------------|-------|
| 3310 | Standard (27.5 x 24 cm) | 32.63 |
| 3311 | Medium (25 x 21.5 cm)   | 29.33 |
| 3315 | Devon (26 x 24.4 cm)    | 32.63 |

Stamp Albums - Luxury Fed fitting Loose leaf

THE DEVON

Maroon, green, black or blue binder. Transparent interleaving available. Leaves 26x24.4cm. boxed

|      |                            |              |
|------|----------------------------|--------------|
| 3834 | Devon White 200 page album | 120.60       |
| 3835 | Devon White Extra Leaves   | Per 50 21.23 |
| 3839 | Devon Binder only          | 77.93        |

THE EXETER

Red, green or blue binder. Leaves 26x24.4cm

|      |                            |              |
|------|----------------------------|--------------|
| 3832 | Exeter White 40 page album | 187.81       |
| 3833 | Exeter White Extra Leaves  | Per 10 30.95 |
| 3829 | Exeter Binder only         | 103.21       |

THE PLYMOUTH

Maroon, green, black or blue binder. Leaves 26x24.4cm. Protective slip case provided

|      |                              |              |
|------|------------------------------|--------------|
| 0392 | Plymouth White 40 page album | 288.93       |
| 3833 | Plymouth White Extra Leaves  | Per 10 30.95 |
| 3912 | Plymouth Binder & Box only   | 206.42       |

THE PHILATELIC

Bound in deep green cloth with leather corners and spine. Strong slip case provided. Allows sheets, blocks etc to be mounted. Leaves 32x26.9cm

|      |  |              |
|------|--|--------------|
| 3919 | Philatelic White Unfaced 80 page album | 552.80       |
| 3920 | Philatelic White Unfaced Extra Leaves  | Per 10 37.13 |
| 3921 | Philatelic White Faced 80 page album   | 552.80       |
| 3922 | Philatelic White Faced Extra Leaves    | Per 10 40.83 |
| 3923 | Philatelic Binder & Box only           | 445.41       |

THE ORIEL

Half bound in red leather with gold tooling. Matching case provided. Leaves 25.9x24cm

|      |                           |              |
|------|---------------------------|--------------|
| 0395 | Oriel White 50 page album | 557.36       |
| 0396 | Oriel White Extra Leaves  | Per 10 64.09 |
| 0397 | Oriel Binder & Box only   | 329.86       |

Ring 22 Albums

|      |                                     |              |
|------|-------------------------------------|--------------|
| 3848 | Ring 22 Binder only                 | 60.30        |
| 3849 | Ring 22 White Unfaced 50 page album | 88.05        |
| 3850 | Ring 22 White Unfaced Leaves        | Per 25 21.23 |
| 3842 | Ring 22 White Faced 40 page album   | 101.10       |
| 3843 | Ring 22 White Faced Leaves          | Per 10 17.93 |
| 3845 | Ring 22 Black Faced 40 page album   | 101.10       |
| 3844 | Ring 22 Black Faced Leaves          | Per 10 17.93 |

STOCKBOOKS - IDEAL RANGE

Manufactured in West Germany under strict quality controls. Materials used are of the highest possible quality and are free of any harmful plastic softeners. Top quality crystal clear foil and glacine have been used. Specifications to suit all of a collector's requirements.

All albums (except A4 and A5) are shrink-wrapped

W - White, S - Black, G - Glacine, C - Crystal clear foil, LUX - crystal clear foil interleaved

|        |  |       |
|--------|--|-------|
| A5     | Stamp motif cover, 4 white glacine striped pages, 8 sided single glacine interleaved, 215 (height) x 158mm (width)             | 7.20  |
| A4     | Stamp motif cover, 4 white glacine striped pages, 8 sided single glacine interleaved, 298 (height) x 220mm (width)             | 8.80  |
| JWC16/ | 8 white pages, 16 sides, 6 crystal clear foil strips per page, double glacine interleaved, linen hinged binding                | 12.00 |
| A5     | 8 white pages, 16 sides, 9 glacine strips per page, single glacine interleaved, linen hinged binding                           | 14.40 |
| JW6 16 | 16 white pages, 32 sides, 9 glacine strips per page, single interleaved, double linen hinged binding                           | 24.80 |
| JWC 16 | 8 white pages, 16 sides, 9 crystal clear foil strips per page, double interleaved, double linen hinged binding                 | 17.60 |
| JWC 32 | 16 white pages, 32 sides, 9 crystal clear foil strips per page, double interleaved, double linen hinged binding                | 33.60 |
| JWC 32 | 16 white pages, 32 sides, 9 crystal clear foil strips per page, LUX double crystal clear foil interleaved, double linen hinged | 45.60 |
| JWC 48 | 24 white pages, 48 sides, 9 crystal clear foil strips per page, double interleaved, double linen hinged binding                | 55.20 |
| JWC 64 | 32 white pages, 64 sides, 9 crystal clear foil strips per page, double interleaved glacine, double linen hinged binding        | 63.20 |
| JSC 32 | 16 black pages, 32 sides, 9 crystal clear foil strips per page, double interleaved, double linen hinged binding                | 35.20 |
| ISC 32 | 16 black pages, 32 sides, 9 crystal clear foil strips per page, LUX double crystal clear foil interleaved, double linen hinged | 47.20 |
| JSC 48 | 24 black pages, 48 sides, 9 crystal clear foil strips per page, LUX double crystal clear foil interleaved, double linen hinged | 63.20 |

CONTROL BLOCK BOOKS - IDEAL RANGE

W - White, S - Black, G - Glacine, C - Crystal clear foil, LUX - crystal clear foil interleaved

|        |   |       |
|--------|---|-------|
| JS3 32 | 16 black pages, 32 sides, 3 crystal clear foil strips per page, double linen hinged binding, shrink-wrapped | 40.00 |
| JS4 32 | 16 black pages, 32 sides, 4 crystal clear foil strips per page, double linen hinged binding, shrink-wrapped | 40.00 |
| JW4 32 | 16 white pages, 32 sides, 4 crystal clear foil strips per page, double linen hinged binding, shrink-wrapped | 40.00 |
| JW3 32 | 16 white pages, 32 sides, 3 crystal clear foil strips per page, double linen hinged binding, shrink-wrapped | 40.00 |



# Indeed, it was bird mail to Bird Island

*From Hill Light House to Bird Island 13/11/18. 2 P.M. am sending two of your birds today to Springmount hope they reach island safely. An armistice between the Allies & Germany was signed on Monday at 5 a.m. hostilities ceased at 11 a.m. same day. Kaiser & family fled to Holland. Revolution in Germany, red flag flying on all ships. Too windy to send pigeons yesterday, nearly all flags blown to bits here. PE properly en fete. Have not heard or seen anything of Mrs Ward. Hope all on island are well. Kind regards to all from all at the Hill. P E Morgan*

Pigeongrams sent to the lightkeeper at Bird Island, Algoa Bay, from the lighthouse at The Hill, Port Elizabeth. Above is one from 1918 and below another from 1919.

*From Hill Light House to Bird Island 28/6/19. 2 P.M. am sending your pigeons by train to Springmount today. Hope they will reach island safely. None of my birds home yet. Germans to sign peace terms by 7 P.M. tonight. If not signed by then hostilities will commence by tonight. Its either peace or war. Suppose we will get the news tomorrow morning. Hope all on island are well. Kind regards to all, also goodbye, my last week in the service. P. E. Morgan*

TWO TINY slips of paper in the South African Transport Services Museum in Johannesburg conjure up a fascinating story, the story of communication with the lighthouse people on tiny Bird Island in the first decades of this century.

Bird Island, where a wooden lighthouse structure was built in 1852, lies in Algoa Bay 60 km east of Port Elizabeth and 9 km south of the nearest mainland at Woody Cape.

The slips of paper are pigeongrams, sent from the Hill lighthouse to Bird Island.

They tell their own story:

*From Hill Light House to Bird Island 13/11/18 2 pm. am sending two of your birds today to Springmount hope they reach island safely. An armistice between the Allies & Germany was signed on Monday at 5 am hostilities ceased at 11 am same day. Kaiser & family fled to Holland. Revolution in Germany, red flag on all war ships. Too windy to send pigeons yesterday, nearly all flags blown to bits here. PE properly en fete. Have not heard or seen anything of Mrs Ward. Hope all on island are well. Kind regards to all from all at the Hill. P E Morgan.*

Springmount is a railway siding on the Alexandria line, inland from Bird Island.

*From Hill Light House to Bird Island 28/6/19 2 pm. am sending your pigeons by train to Springmount today. Hope they will reach*

*island safely. None of my birds home yet. Germans to sign peace terms by 7 pm tonight. If not signed then hostilities will commence by tonight. Its either peace or war. Suppose we will get the news tomorrow morning. Hope all on island are well. Kind regards to all, also goodbye, my last week in the service. P E Morgan.*

These pigeongrams suggest that there was a two-way pigeon communication between The Hill and Bird Island and that the birds were only flown in fair weather. Birds flying from Bird Island to The Hill would in any case have had to battle into the prevailing headwind.

Very little is known about the communication by pigeon, which is believed to have started around 1906. Pigeon mail was discontinued when wireless communication with Bird Island was installed in 1921.

We are sure lighthouse and postal historians, and maybe aerophilatelists, will be researching the story.

Today the Bird Island lighthouse is automatic, but servicemen doing maintenance there have radio contact with Cape Recife lighthouse. And, for the record, Dassen Island is reached by SA Transport Services radio telephone, and Robben Island by telephone.

## Island PO discovered

A SHORT-LIVED post office on Bird Island has been uncovered by Ken Graham when he was checking old Blue Books of the Cape Government, which list government appointees and their pay.

Mr Graham was reading about J Reid, who was appointed postal agent on Robben Island on 20 October 1862. He remained listed as such until 1879, for 17 years.

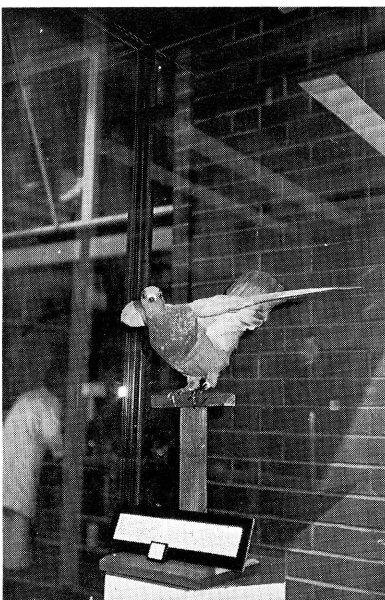
In 1867 a note appeared next to his name, stating that he was connected with the general infirmary on the island.

But in 1872 the Blue Book announces the appointment of J Reid as postal agent on Bird Island, Algoa Bay. An additional note says he is the lighthouse keeper!

This suggests that there were two John Reids, the one on Robben Island not a lightkeeper.

The Bird Island appointment lasted only for two years. This would mean that the postal agency operated at the time when the proper stone lighthouse was constructed to replace the old wooden structure of 1852. The stone building was completed in April 1873.

After the closure of the agency (presumably) a harbour tug from Port Elizabeth was used to ferry supplies, and mail, to the island right up to the automation of the light in 1968.



*The mailbird of Bird Island — a message-carrying pigeon, now in the SA Transport Services Museum.*

# How many South African lighthouses are featured on postcards?

by Archie Atkinson

(The Southern Africa Postcard Research Group)

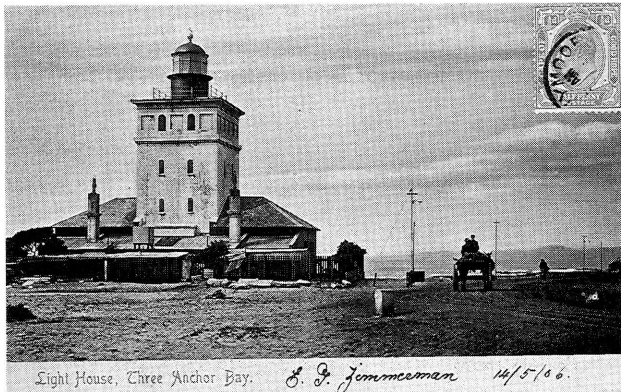
WHO IS for collecting lighthouses? I have just twelve lighthouse postcards in my collection, at the back of my Union-Castle cards. I would dearly like to have more, because lighthouses have always been of special interest to me.

Most of my childhood holidays were spent at the seaside near Port Elizabeth, where one could see the Cape St Francis light at night, some 60 km away, and the glow of the Cape Recife light which, though closer, was itself hidden by the curve of the coastline.

Where I now live I am but a few kilometres from the lighthouse on Langness, on the Isle of Man, and some 16 km or so from one of the more notable lights in the British Isles, the one on Chicken Rock, south of the Calf.

Obviously my collection is confined to postcards showing the lighthouses of Southern Africa. They are:

1. Lighthouse, Greenpoint, Cape Town (Camera Series No 093), postally used 1906.
2. Lighthouse, Three Anchor Bay (the same light) (PS & Co No 1225), postally used 1906.



The Greenpoint lighthouse — not yet painted in its distinguished red and white — on a picture postcard of 1906 (no 2 in the list).

3. Mouille Point Lighthouse, Cape Town (GB & Co No 761). The lighthouse shown is the Greenpoint one, quite distinct from the Mouille Point light (No 5 below).
4. Penguins (light lighthouse shown is the one on Dassen Island) (PS & Co No 116), postally used 1906.
5. Lighthouse, Mouille Point, Cape Town (Camera Series No 092), postally used 1906 (!).
6. Light House, Cape Point (PS & Co No 101), postally used 1905.
7. The Outspan and Old Lighthouse, Cape Point. No publisher's imprint, but there is a Cape Valentine number — 501 116 — which tallies with the Valentine register of negatives.
8. Lighthouse, Donkin Mont. and Reserve, Port Elizabeth. No publisher's imprint (undivided back).
9. Lighthouse and "Stuart Staff", East London. No publisher's imprint.
10. The Bluff Lighthouse, Durban (A Rittenberg No 398), postally used 1912.
11. Lighthouse, Durban (The Bluff). No publisher's imprint.
12. The Bluff Lighthouse, Durban (SECD — Sallo Epstein) (undivided back).

The question is how many South African lighthouses could one expect to find pictured on old postcards. In our own library there are three useful references.

Archie Atkinson is the chairman and editor of the Southern Africa Postcard Research Group. This article was first published in the group's newsletter number 23, dated March 1987.

The *Illustrated Official Handbook of the Cape and South Africa* (1893) says —

"Lighthouses have been erected and are maintained by the Colonial government at the ports and on the principal headlands along the coast.

"Dassen Island is the first leading light for vessels making Table Bay from the north-west; and at the entrance of the bay there are the lights of Robben Island, Green Point, Mouille Point and the breakwater.

"At the entrance of False Bay there is the Cape of Good Hope Point light; and in Simon's Bay, the Roman Rock.

"At Cape L'Agulhas, the southern extremity of Africa, there is a light, also on Cape St Blaize, Mossel Bay, and on Cape St Francis.



Dassen Island lighthouse in characteristic garb, with jackass penguins (no 4 in the list). On the reverse the sender of the card writes: "If the weather very clear we can see the light . . . from Sea Point . . ."

"At the entrance to Algoa Bay, there are lights at Cape Recife, at Port Elizabeth (harbour light), and at Bird Island. There are also lights at Port Alfred and East London.

"Along the coast of Natal there are two lights, situated about 8 797 yards apart, giving warning of the sunken reef known as the Aliwal Shoal; and there is a lighthouse on the Bluff at the entrance to Natal Harbour."

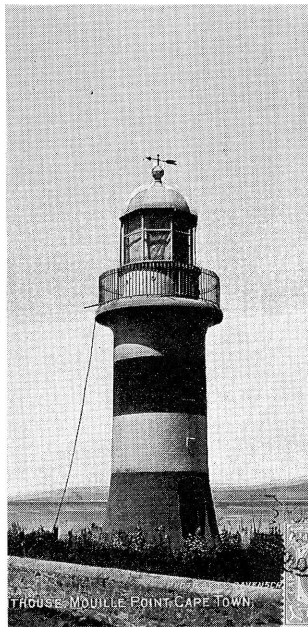
The *Union-Castle Atlas of South Africa* (1903) indicates lighthouses on Dassen Island, Robben Island and at "Sea and Green Points", Cape of Good Hope, Simonstown, Danger Point, Cape Agulhas, Cape St Blaize (Mossel Bay), Cape Recife, Bird Island (Algoa Bay), Port Alfred, East London, Scottburgh and Saint Barrow (both on the Natal coast near Umkomaas River mouth), and Durban Bluff.

Larger scale town maps show lights at Mouille Point and Green Point (but not at Sea Point), on Roman Rock at Simonstown and next to the Donkin Memorial, Port Elizabeth.

The *Official Year Book of the Union of South Africa 1910-17* lists 24 lights:

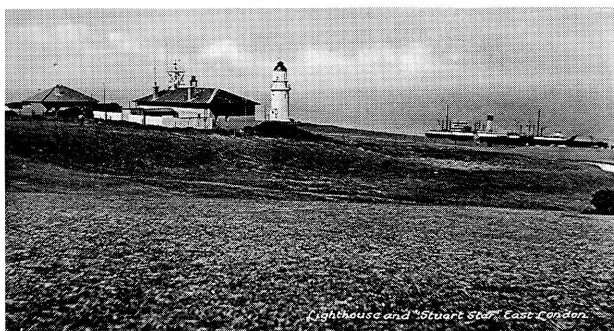
1. Port Nolloth (manned by two persons)
2. Dassen Island (three persons)
3. Robben Island (three)

1. Port Nolloth (manned by two persons)
2. Dassen Island (three persons)
3. Robben Island (three)
4. Green Point (three)
5. Breakwater, Table Bay (one person)
6. Slangkop (three)
7. Cape Point (three)
8. Roman Rock (one person)
9. Danger Point (three)
10. Cape Agulhas (three)
11. Cape St Blaize (three)
12. Cape St Francis (three)
13. Cape Recife (three)
14. Port Elizabeth (three)
15. Bird Island (two)
16. Great Fish Point (three)
17. Hood Point, East London (three)
18. Cape Hermes, Port St Johns (two)
19. Port Shepstone, Natal (two)
20. Green Point, Natal (unmanned, for the Aliwal Shoal)
21. The Bluff, Durban (two)
22. Durban Harbour lights (one)
23. Point Durnford (one)
24. Cape St Lucia, Zululand (one)

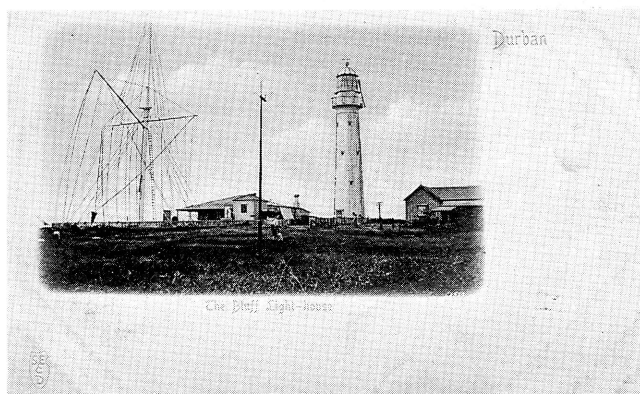


The lighthouse which once stood at Mouille Point. The colour card is postmarked on the picture side, and the sender writes: "Do you care for lighthouses? With kind regards, yours sincerely . . ." (No 5 in the list.)

It seems unlikely that the Green Point, Natal, lights were ever the subject of a postcard but the others could well have been, particularly in the great pictorial postcard era of early this century. I live in hopes of expanding the number of South African lighthouses pictured in my modest collection!



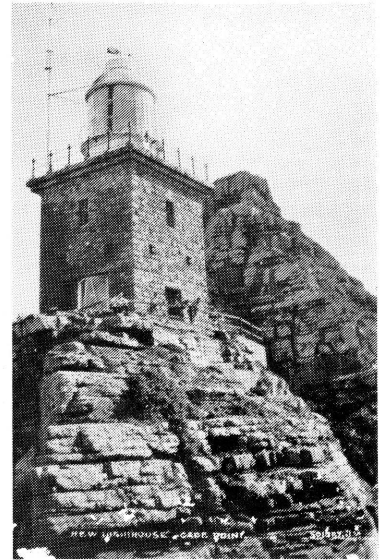
Lighthouse and "Stuart Staff" at East London. The latter appears to be a ship close inshore, or even onshore (?). (No 9 on the list.)



This unusual picture card shows the lighthouse at the Bluff in Durban, with an array of antenna wires (No 12 on the list).

## Cape Point

New Lighthouse — Cape Point is the caption of a picture postcard published by Valentine's(SA) Ltd of Cape Town, probably in the 1920s. Another Valentine's card shows the Cape of Good Hope and the old lighthouse and the photograph is rather similar to that of the 1931 1d official postcard, yet the Valentine's caption refers to the "Old Lighthouse". (Mrs E Colquhoun).

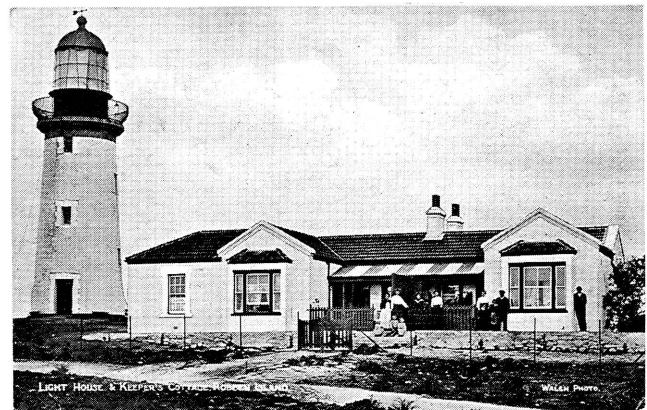


## Cards kept by keepers

LIGHTKEEPERS also kept picture postcards of lighthouses, and we illustrate some collected by Mr Harold Williams, retired lighthouse engineer.

The cards are part of Mr Williams' research documentation on the full history of the South African lighthouse service. Much of his data has now been deposited with the SA Transport Services Museum in Johannesburg.

Some of the cards had been given to Mr Williams by other old-time lightkeepers, and will be used to illustrate his forthcoming book on the subject.



A colour card captioned "Light House and Keeper's Cottage, Robben Island". An imprint reads Walsh Photo. The card was postally used (to a lightkeeper) in 1911.



A monochrome Robben Island card shows that the hedge at the keeper's house had grown considerably. The card is undated and is inscribed only "Post Card".



"Donkin Reserve and Lighthouse, Port Elizabeth" shows The Hill early this century. The card was published by Hallis & Co, Port Elizabeth, and is inscribed Postal Card/Union of South Africa.



This card shows "Lighthouse Keepers Quarters, Cape Point." The card had been stuck down.

## Official postcards

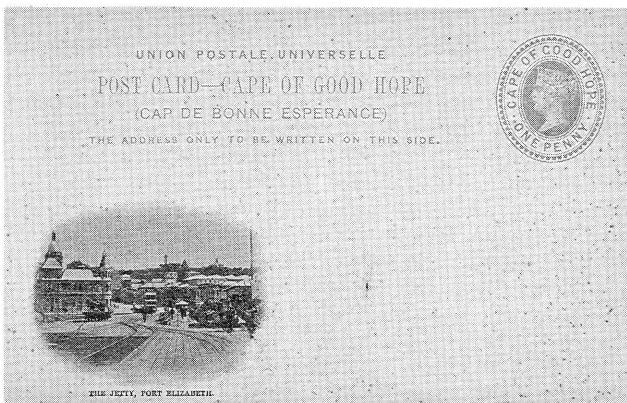
by Eve Colquhoun

(SA Postmark and Postal History Society)

NEXT YEAR'S maxicards for the Lighthouse stamps will not be the first official postcards showing South African lighthouses.

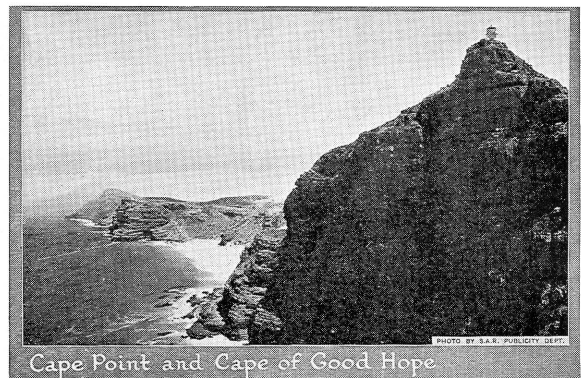
The honour of being the first lighthouse on an official postal stationery card must go to the Hill, Port Elizabeth (much to my delight as a resident).

It may be seen next to the Donkin Memorial Pyramid in the upper part of the view called the Jetty, Port Elizabeth, on the Cape of Good Hope 1d postcards issued on 17 July 1899.



At 1931 Union of South Africa 1d postcard (the stamp imprint being the 1d Ship, bi-coloured), shows "Cape Point and Cape of Good Hope", being a photograph by the SAR (= SA Railways) Publicity Department.

It is strange that this card shows the old Cape Point lighthouse which was lit in 1860 and stood 250 m above sea level (upper right of the picture). It was replaced by the present light, lit on 11 March 1919, at a much lower elevation of 87 m above the high water mark.



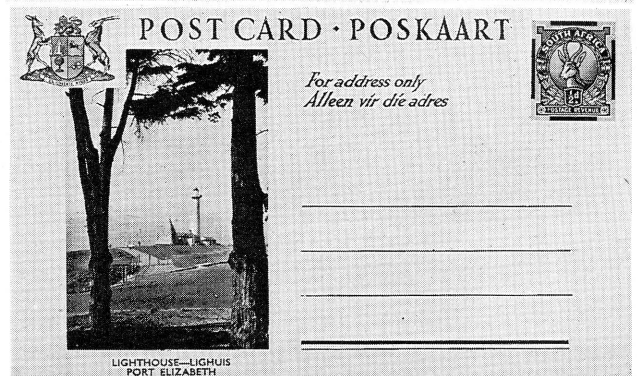
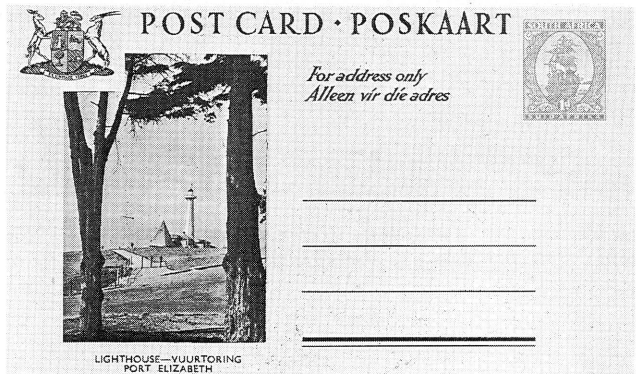
Why would an old photograph be used 12 years after the removal of the old light?

A 1934 Union of South Africa ½d postcard has a view of "The Poort, Mossel Bay, Cape", showing the lighthouse on the headland of Cape St Blaize. In addition to the bi-coloured ½d stamp imprint, the card is franked with another ½d Springbok stamp (Suidafrika as one word).



Meanwhile in 1930 the height of the tower of The Hill lighthouse in Port Elizabeth was raised, and this is how it appears on the 1942 ½d postcard, which is printed in green with the picture on the address side. The caption reads Lighthouse — Lighuis, Port Elizabeth.

By 1952 this inscription changed to Lighthouse — vuurtoring, Port Elizabeth. The same photograph was used and this time the official postcard was in brown, with the 1d Ship stamp imprint in red.



# These stamps are a de-light!

by Eve Colquhoun

(South African Postmark and Postal History Society)

WHEN MAN first ventured out to sea to obtain food the concept of a sea-light was borne. If wind and tides prevented his reaching shore in daylight, a fire would have been lit by his family or friends to guide him home.

From this simple act of humanity grew the lighthouse systems of the world today, serving ships and men of all nations. They warn of danger or lead to safe harbour. Their lights are only extinguished by accident or tragedy, or as in World Wars I and II as a necessity, or by destruction.

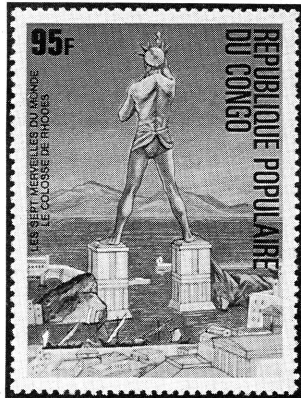
The early Swape fire lights allowed the first basket to be raised above the ground or tower by a simple form of leverage.

Such lights are seen on stamps of Denmark and Finland.



Lighthouses are known to have been in use since 600 BC. Legend tells that the Colossus of Rhodes, a figure of Apollo holding a torch, the fifth Wonder of the Ancient World, was a lighthouse built in 300 BC and serving for eighty years before being overthrown by an earthquake.

The lighthouse built on the island of Pharos near Alexandria, Egypt, was lit in 242 BC and served for 1 500 years until it too was destroyed by an earthquake. It became known as the Pharos of Alexandria and was the seventh Wonder of the ten World.



So renowned was this lighthouse that "Pharos" became the generic name for all sea-lights in the world.

An artist's impression of these lights is shown on stamps of the Congo Republic.

The oldest lighthouse in use today is probably that at Coruna, North-Western Spain, built and used by the Romans. An engraved stone records the architect's name. It fell into disuse but in 1682 it was restored to use, and in the mid 19th century raised to its present height. Internally it is Roman to a height of 32,9 m but none shows externally due to refacing of the lighthouse.



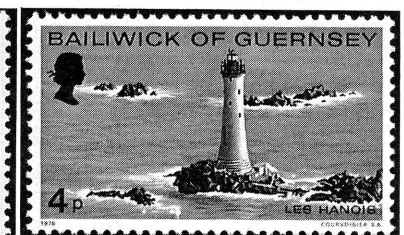
It is known as the tower of Hercules and is portrayed in the coat-of-arms of Coruna.

Lighthouses are usually divided into two classes based on the nature of their location. They are wave-swept towers, and land-based lights.

Wave-swept towers are located on rocks and shoals and are exposed to the force of sea and winds. The most famous is the Eddystone lighthouse, the first wave-swept tower in the world.

A great feat of engineering, it was designed and built by Henry Winstanley, who with his workmen first set foot on the dangerous Eddystone Rocks in June 1696 and lit his lamp on 14 November 1698. The following winter was severe, but not one vessel was lost to the rocks.

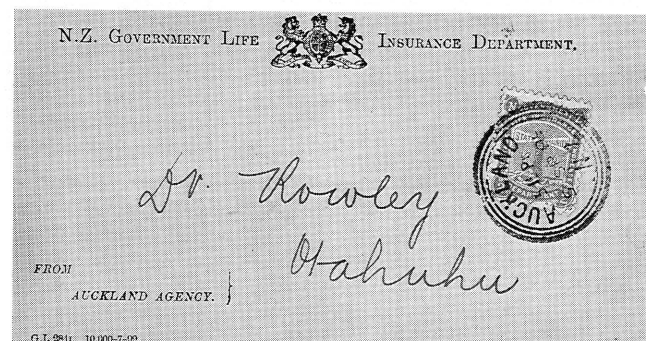
New Zealand honoured the achievement by including this light amongst the stamps issued in 1947. It is interesting to note that it is the fifth tower built by Douglass in 1882 which is shown, and the stump of Smeaton's tower has been used as the value tablet.



Other wave-swept lighthouses are Les Hanois (Guernsey) and Horsburgh, which stands on Pedras Branca Rock in the Straits of Singapore.

Land-based lights may be located on high headlands, the shore, the entrance to harbours or alongside rivers or lakes.

Examples are Douglas Head (Isle of Man), Cape Hatteras (USA) and Kolobrzeg (Poland), built in 1945 to replace one destroyed during World War II. These lighthouses are shown on stamps.



New Zealand Government Life Insurance Department cover with a 2d GLI VR stamp cancelled at Auckland in 1895 and addressed to a Dr Rowley at Otahuhu, where the cover was backstamped.

# Vuurtorings

The honour of having the first stamp to portray a lighthouse goes to New Zealand Government Life Insurance Office, to this day the only life insurance institution in the world having the right to issue its own stamps.



The stamps designed by the then Secretary W Hudson and J Rogers of Wellington incorporate a lighthouse, epitomising strength and stability, and the letters V. R., and there were six values issued on 2 January 1891.

Further issues with slight variations have been made. On 1 August 1947 government Life issued a pictorial set of seven stamps. Six show New Zealand lighthouses, the 3d value showing the Eddystone light.

These stamps are only available to the public on the day of issue. Other lights are shown on subsequent issues, but in 1981 a return to a symbolic light was made.



1947 first day cover of the New Zealand Government Life insurance set.

Australia's first lighthouse, the Macquarie light, lit on 30 November 1818, was designed and built by Francis Howard Greenway, a convict though an architect by profession.



On completion of the light he was given his emancipation by Governor Macquarie and later employed as a government architect. The stamp shows a cross-section drawing of the original building, later replaced by an almost identical one.

Some lights of the African coast shown on stamps are those at Swakopmund (SWA), Cape Sierra (Sierra Leone), Ile Tamara (Republic of Guinee), Ras Bir (Djibouti, formerly French Somali Coast) and Denis Island (Seychelles).



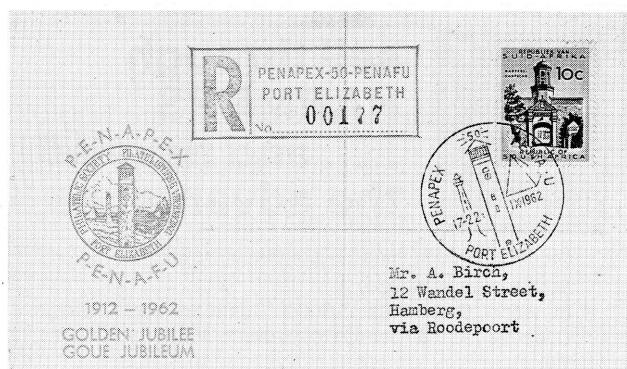
## Another connection

AN AFFINITY between philately and lighthouses — at least the one known as The Hill — is reported by Mrs Eve Colquhoun of Port Elizabeth.

The Hill lighthouse stands in the central city of Port Elizabeth, next to the Donkin Memorial.

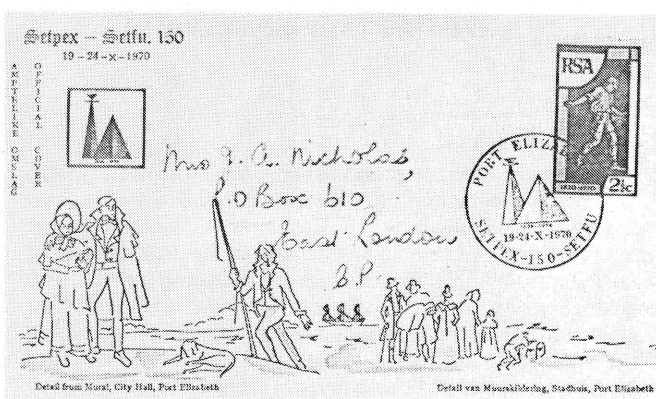
At the Penapex/Penafu national stamp exhibition held in Port





Elizabeth on 1-6 October 1956, both featured in the design of the official exhibition cover.

Six years later the national stamp exhibition was again held in Port Elizabeth as Penapex/Penafu (17-22 September 1962). This time the Capanile was the central theme, but both the lighthouse and the Donkin Monument were in the exhibition emblem and in



the exhibition postmark.

In 1970 Setpex/Setfu, that year's national stamp exhibition, reverted to an emblem design involving the lighthouse and the Donkin Memorial and the twin landmark is on the cover and in the exhibition postmark.

## Books/Boeke

### Freemason philately

**Masonic Philately, Part 3**, by Trevor J Fray. Published by Harry Hayes, 48 Trafalgar Street, Batley, West Yorkshire WF177HA, UK, in 1987 (but dated 1986). Airmail price £6,20.

THIS is volume 3 of a 5-part work, which up to now covers subjects such as the background to the Brotherhood, religious and charitable aspects, Masonic stamp designs, groups on stamps, Masonic temples, ceremonies and symbols and anti-Masonic stamps.

The most important part, Freemasons on stamps, in this volume reaches the letter R, making a total of 702 detailed biographical summaries.

South African Freemasons on stamps listed in this volume include Rev Andrew Murray, Sir Ernest Oppenheimer, Piet Retief, Andries Pretorius and his son M W Pretorius, and Cecil Rhodes.

Collectors of this theme will find the handbook most useful, and are also welcome to join the Masonic Philatelic Club. Mr Fray is the secretary and newsletter editor and his address is 76 Merrivale Road, Beacon Park, Plymouth, Devon LP 2 2RP, UK. The club has about 400 members. — JG

### Duitse kolonies word duurder

**Stanley Gibbons Stamp Catalogue Part 7, Germany**. 3e uitgawe 1987. Uitgegee deur Stanley Gibbons Publications Ltd. VK-prys £10,95.

STERK prysstygings vir seëls van die ou Duitse kolonies is 'n kenmerk van hierdie hersiene en bygewerkte Duitsland-katalogus, wat volg vyf jaar na SG se vorige deel 7.

Seëlboekies word ook gelys: die prys vir die 1911-boekie (boeklet) van Duits-Suidwes-Afrika is £1 600. In 1913 het nog twee seëlboekies vir DSWA gevolg maar dié is net in Berlyn uitgereik en nie in die gebied self nie.

Die katalogus is 'n lywige werk van ruim 300 bladsye en dek die Duitse state, oorlogsuitgawes, Geallieerde besittings en buitelandse poskantore. Temaversamelaars sal die indeks van Wes-Duitse seëlontwerpe nuttig vind. — JG

### OFS postcard stamps in Red Gibbons

**Stanley Gibbons Stamp Catalogue Part 1, British Commonwealth** 1988 edition. Published by Stanley Gibbons Publications Ltd, which advises that all SG publications may be obtained in South Africa from D I Dodds

Enterprises, PO Box 1896, Randburg 2125. Advertised in *The SA Philatelist* by Stanley Gibbons of Rosebank, Johannesburg, at R89,95 plus GST (free postage and packing).

THE 'RED' Gibbons was published last month, an event of some magnitude as the tome has now grown to 1 050 pages of small print.

Continual adjustments are reflected in Stanley Gibbons' prices and indicate the supply and demand position: in Great Britain there are some significant increases for used Victorian material while sharp rises are recorded for some provisional issues such as Tanganyika's Mafia Island, Madagascar Consular Mail stamps and New Zealand officials.

Trends are less pronounced in later issues. King George VI prices in general are said to be "still disappointing", while overproduction and overstocking of QEII material continue to depress the market in these issues.

Additions to the 1988 Commonwealth catalogue include the listing of the scarce second Pretoria printing of the 1976 new currency surcharges of Botswana, and listing of the unannounced 1986 provisionals of Lesotho.

The unusual postcard stamps of the Orange Free State are listed for the first time, thanks to work by OFS specialist Mr A R Allison. Stamps were affixed to cards and then overprinted, and sometimes surcharged.

Revision of the Indian states sees a new one listed: Dungarpur. It is not yet known when the first of these stamps were issued, but it is believed to be around 1910.

Again, a magnificent work of reference and an unequalled sourcebook of philatelic information. — JG

### How a handbook grows

**Postal cancellations of the Ottoman Empire, Part 1, The Lost territories in Europe — addendum, corrigendum and index**. By John H Coles and Howard E Walker. Published by Christie's Robson Lowe at £6 plus £1,50 postage. THIS supplement to the 1984 handbook adds a wide range of new information, including 83 new diagrams of cancellations (the book itself had 758!).

The postal history of south-eastern Europe under Turkish rule is a fascinating field for study, covering Albania, Bulgaria, Greece, Rumania, Yugoslavia and a variety of islands and having a multiplicity of postal markings in Arab and/or Roman characters.

What is pleasing, is that both authors and publisher have now encapsulated the new information which came to light as a result of the handbook. — JG

# LOOKING BACK

From the South African Philatelist

**60 YEARS AGO**  
September 1927

## New 2d postage due

The new 2d postage due stamp was brought into use this month. Its colours are bright mauve (frame) and black (centre) and it is a very creditable production. The English and Afrikaans postage dues are superior in appearance to the previous Pretoria printed stamps because the frames of the former are being printed from copper plates faced with steel. Four such plates, capable of printing two panes (120 frames) were made by Waterlow's and sent to Pretoria. The denomination, in black, is printed from ordinary litho plates made by the Government Printer.

**30 YEARS AGO**  
September 1957

## A gift for posterity in Durban

Mr Harold Dugard Bowker, a retired solicitor and former registrar of the Supreme Court, Johannesburg, has presented the staff of Durban Old House Museum with a small sealed package which may not be opened for 100 years.

Mr Bowker said the parcel contained about 200 stamps, most of them blocks of current South African, Rhodesian, Nyasaland, Australian and Canadian issues.

"None of them cost me very much — the most expensive is an unused 10s South African stamp. I calculate that in 100 years' time they will be worth much more", he said. "The gift is a small token of my gratitude to Durban for the pleasant years I have spent here".

Mr Bowker is a grandson of William Bowker, a famous 1820 settler, and a cousin of Mr T B Bowker, MP for Albany.

We hope the Editor of *The South African Philatelist* of 2057 will remember this important happening and that he will receive an invitation to be present at the opening ceremony.

# HARMERS



**sell through  
HARMERS  
... and have all  
the advantages**

- \* choice of auction venue — London or New York
- \* choice of sale category:  
All World; Great Britain; British Commonwealth; Foreign Countries; Airmail Stamps and Covers; British America, etc. etc.
- \* guaranteed payment
- \* no unsold charges
- \* 10% vendors commission
- \* no lotting fees
- \* advances available on most properties
- \* quality presentation in quality catalogues
- \* worldwide catalogue distribution
- \* effective sales publicity and advertising
- \* 116 years combined experience — established London 1918, New York 1940.

Contact us today

## HARMERS of LONDON

STAMP AUCTIONEERS LIMITED  
91 NEW BOND STREET, LONDON W1A 4EH  
Tel: 01-629 0218

## SELECT-A-STAMP

Have a Box of Stamps to sort in your home. Good World Mixture. Many Highly Cat. Stamps. From original sources.

Further details or R10 deposit for your box to:-

### HORISON VIEW STAMPS

PO Box 5063, Horison 1730. Tel (011) 763.4928  
or call Shop 2, 28A Georgina Street  
Horison, Roodepoort. SAPDA members.

## POSTAL HISTORY of THE WORLD

Enquiries invited from all collectors interested in covers, postmarks, proofs, essays and "Cinderella" material

### WILLIAM R HART



"Westhope", Lyth Bank,  
Bayston Hill  
Shrewsbury,  
SY3 OBE  
England



## SPECIALISTS IN FINE SUDAN MATERIAL AND POSTAL HISTORY OF BRITISH COLONIES PRIOR TO 1935



WE ALSO STOCK WORLD WAR II POSTAL HISTORY, REVENUES AND CINDERELLA ITEMS.

Send us your Want Lists and see what we can supply at competitive prices.

### HENRY MAUERBERGER STAMP SALES (PTY.) LTD.

P.O. Box 386, Constantia 7848, Cape, Republic of South Africa. Tel. (021) 885403  
SHOP 40, Palmer Road, Muizenberg, Cape.

# Why I collect Israeli stamps

by Willie Mann

(Society of Israel Philately, Johannesburg)

SHORTLY after I was demobilised, I settled in Johannesburg. It must have been the bug that bit me in my early childhood — a passionate love of stamps — that drew me to philately and philatelists.

Thus I soon met up with a dedicated philatelist, the late Tobie Sacks, who launched me, so to speak. He introduced me to the Joseph brothers — Benje, the wellknown stamp dealer, and Jackie, a Union Collector, whose house in 115A Staib Street, Doornfontein, became the Mecca for us stamp collectors and our unofficial “stamp exchange”.

The next logical step was to join the philatelic section of the Jewish Guild, the precursor of today’s Philatelic Society of Israel, housed in Von Brandis Street, where we met on the last Thursday of every month.

It was patronised by many leading philatelists, members as well as visitors, among them Alec Kaplan, Leo Buchen, “Oppie” Oppenheim, Sam Legator, Jack Shepherd, Commander Cyril Enoch, Hans Hoffman — a stamp dealer — Mike Michelson, Boris Glassman, F G Froehlich, Harry Marcusson, Ury Milunsky, Lou Abrams, Advocate “Ickey” Isaacs, and many others — a veritable “Who’s Who” in the philatelic world. Some, many in fact, are regrettably no longer with us.

Certain highlights come to mind. Our meeting in September 1948. Leo Buchen has just returned from his visit to the newly-founded state of Israel, and proudly displays one sheet of each value of its newly issued Doar Ivri stamps. He promptly proceeds, as a special service, to sell them, one set per member, at cost plus 10%.

No one, it seems, paid any attention to the strips of selvage — the new “tabs” which have proved priceless in time. I don’t think anyone realised the significance of the First Issue which was to become a modern classic, for since then the innumerable mushrooming young states have followed suit, flooding the market with new issues.

A red letter day in the history of philately was 28 June 1956, which marks the founding of the society of Israel Philately (SIP). Its prime movers were Dr Alec Kaplan, Leo Buchen and David Wacks — in charge of the philatelic sales of the Zionist Federation — as well as numerous other Israeli stamp enthusiasts. Needless to say, we of the Philatelic Section of the Jewish Guild joined the new society en bloc.

The society received excellent press coverage in the Jewish press, and was to become a force in the philatelic world. It organises exhibitions, both local and international, and promotes the stamps of Israel throughout.

I recall with what joy and zest I collected the new issues . . . Here the ancient prophets come to life on the Festival stamps issued every year — the Rosh Hashana (New Year) issues.

Famous names follow one another in quick succession. Here we see Theodor Herzl, standing on the bridge over the River Rhine in Basle, dreaming of the state, his brainchild as embodied in “Der Judenstaat”. Alas, he was not destined to witness its birth.

There is Dr Chayim Weizmann, whose life’s work and goal was the Jewish state, and who became its first President; Ben Gurion, its first Prime Minister, who amidst vehement opposition from leading Zionists, proclaimed it in 1948; our sages and poets: Bialik, the poet of the diaspora, and its degradation, and the lover of Zion and bard who sang of the Jewish state; Eliezer Ben-Yehuda, the father of modern Hebrew; the fighters: Ze’ev Jabotinsky, the true disciple of Herzl, imprisoned in Akko for organising a Jewish self defence in Israel against the Arabs in 1921; a man who dedicated his entire being, talents and energies to the founding of the Jewish state; who founded the Betar, modelled after the one-armed hero Joseph Trumpeldor who fell in the defence of Tel Hai with the words “Tov Lamut b’ad Artzenu” (It is good to die for our country); + freedom fighters David Raziel 1941 and Abraham Stern; hero of the holocaust Janusz Korczak, who cared for and then led the Jewish orphans along the Warsaw streets on their way

to Treblinka — with them to the end.

The stamps of Israel are a kaleidoscope depicting the growth of the state, its wars, its tribulations. Each year a stamp is issued to commemorate the fallen heroes of the Israeli-Arab wars. We remember them all.

We also honour the non-Jews who helped us in the time of our greatest need: President Harry Truman of the USA, the first country to recognise the new state of Israel within hours of its founding, despite great opposition from his own cabinet; Lord Balfour, the author of the Balfour Declaration, Eleanor Roosevelt, the courageous wife of the famous wartime President; the brave people of Denmark who risked their lives in an attempt to smuggle the Danish Jews to Sweden; General Orde Wingate, who trained the Jewish underground, a man with a vision, the biblical vision of leading the Jews in battle for freedom, albeit against his own people; Raoul Wallenberg, the Swedish diplomat who saved thousands of Hungarian Jews and paid for it with his life — all these men are immortalised in stamps.

Nor have the non-Jewish holy places of other religions been overlooked. There is a stamp depicting the Holy Basilica of Annunciation in Nazareth, the Arab feast of Ramadan, the Druze Holy Temple; great events in history — the list is endless.

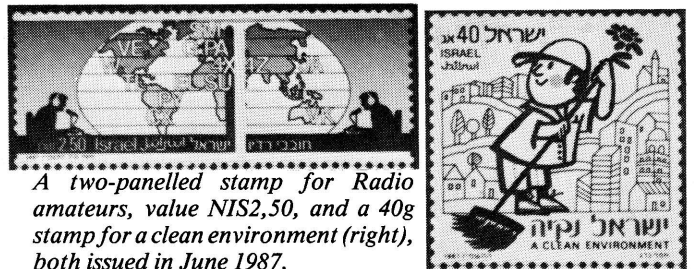
To me each stamp is momentous and unique, filling me with renewed pleasure and engraves on my memory happenings and personalities which have earned a place in the hearts and minds of man for all time.

+ A stamp has been issued in memory of Trumpeldor too.

*A final word to collectors of Israeli stamps. The Society of Israel Philately is a most active one. It meets regularly on the first Monday of each month at the Patterson Park Complex, Norwood, Johannesburg. It welcomes members. For further details contact the Secretary: Boris Glassman, phone 640-2708.*



## Recent Israel stamps



*A two-panelled stamp for Radio amateurs, value NIS2,50, and a 40g stamp for a clean environment (right), both issued in June 1987.*

THIS year’s World Dog Show was held in Israel from 23 to 27 June 1987 and was visited by dogs and their owners from 40 countries.

In fact, thousands of dogs competed to become “world champion” in each of 328 different breeds.

Israel issued three se-tenant stamps showing dog breeds which originate in the area.

On the left is the **Sloughi**, a short-coated sight hound from barren desert areas and able to withstand extreme desert weather conditions.

## COMING YOUR WAY



*Prussian Blue*

Plus David Muscott & another lovely selection of  
**QUALITY GREAT BRITAIN AND COMMONWEALTH**

I shall be available to see you and show our stock  
as follows —

JOHANNESBURG — FRIDAY 11th SEPTEMBER —  
ROSEBANK HOTEL. TEL. 788-1820  
JOHANNESBURG — SATURDAY 12th SEPTEMBER —  
ROSEBANK HOTEL. TEL. 788-1820.  
CAPE TOWN — MONDAY 14th SEPTEMBER — MOUNT  
NELSON HOTEL. TEL. 23-1000.  
PAARL — WEDNESDAY 16TH TO 19TH — AT THE  
NATIONAL EXHIBITION.

B.P.F.; P.T.S. **MUSCOTT'S** A.S.D.A.; S.A.P.D.A.

6 Meadrow Godalming (Tel. 0944-4868-7884) Surrey. GU7 3HL. U.K.

*George W. Holschauer*



## COLONIAL STAMP CO.

*The British Empire Specialists*

WE MAINTAIN ONE OF AMERICA'S FINEST AND  
MOST COMPREHENSIVE STOCKS OF PRE-1935 EMPIRE  
MATERIAL FROM ADEN TO ZULULAND. EXTENSIVE  
PRIVATE TREATY SERVICES ARE AT YOUR DISPOSAL  
PERIODIC AUCTIONS

CATALOGUE SUBSCRIPTIONS UPON REQUEST.

Members: ASDA, APS, IFSDA, CSDA, Philatelic Foundation



5410 Wilshire Boulevard  
Los Angeles, California 90036  
U.S.A.  
(213) 933-9435

Cable Address "PHILATELY" LOS ANGELES



## Doreen Royan & Associates (Pty) Ltd.

Rare Postage Stamps

- Specialists in Great Britain and the British Commonwealth  
during the reigns of  
Queen Victoria, King Edward VII, King George V, and King George VI.  
**PLEASE CONTACT US IMMEDIATELY WITH YOUR REQUIREMENTS**
- We are also buyers of single items and collections.

P.O. BOX 310, SUNNINGHILL 2157  
322 SANDTON GARDENS, MALAWA ROAD, SUNNINGHILL PARK, SANDTON, TVL., R.S.A.  
TEL. (011) 803-3237

Members: PTS, IFSDA, SAPDA

Even today the dog can be seen accompanying Bedouin herds in the Sinai. Israeli breeding of the Sloughi is based on dogs of the Bedouin tribes living in valleys of the southern part of the Sinai peninsula.

In the middle is the **Saluki**, prototype of the sight hound, "quick of loin", to use the Biblical term. It is a sand-coloured dog with a short coat on the body and well-feathered ears and tail.

It is light of build and reacts quickly. When hunting, it easily overtakes prey.

The Saluki exists for thousands of years in the lands that were the cradle of civilisation.

On the right is the **Canaan Dog**, one of the most ancient of dogs. Rock carvings and all paintings in Israel, dating from 2000 BC and the first and second centuries, testify to its antiquity.

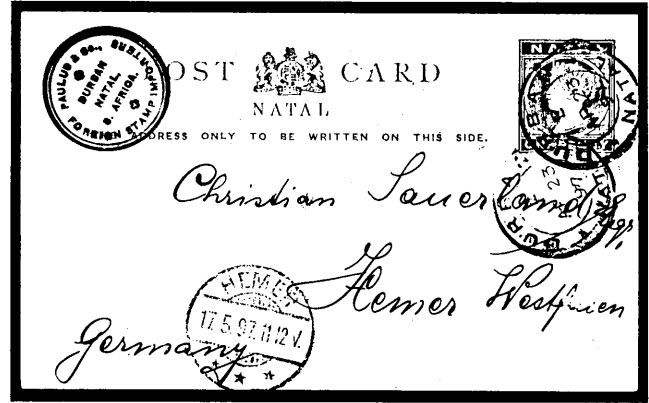
In Israel the Canaan Dog is still found in the wild. It was first domesticated in the 1930s by prof R Menzel. It is a medium-sized guard dog of square compact build, with pricked up ears. The coat is thick and light-coloured, with or without spots.

**From Belgium** — Leon Palmans, 36 Rue Fersand Herotaux, 4544 Diedhem, Belgium, is interested in correspondence and stamp exchange.

**Olympic interest** — Alan R Polsky, 13816 Bora Bora Way 218-A, Marina Del Rey, California 90292, USA, collectors Olympic Games pins, participation medallions, badges, tickets, programmes and the like. He says he has hundreds of Olympic games pins to exchange, but is not a stamp collector.

**To carry on** — Konrad Händel, Bergstrasse 79, D-7890 Waldshut 1, West Germany, for over 40 years had a very friendly connection with a stamp collector in South Africa. Mr Händel sent him all the new issues of the Federale Republic of Germany and Berlin, and he in turn supplied the new stamps of RSA, SWA, the Black states and Zimbabwe. Now 85, the South African cannot keep it up because of failing health, and Mr Händel is looking for a new exchange partner.

## Durban's first stamp dealer?



We often hear about and see references to M Z Booleman, considered to be the first stamp dealer in Johannesburg, but what about Durban?

A recent item which has come my way is a card written from Durban in April 1897 to Germany bearing a very fine and clear hand-stamp on the front left corner 'Paulus and Co/Foreign Stamp Importers/Durban Natal, S. Africa.'

The card is written to one Christian Sauerland who was at the time evidently editor/publisher of the *General Anzeiger für Philatelie* requesting him to insert the following notice 'Months ago we sent Africa stamps to collectors several of whom have up to now not replied. We must ask them for prompt settlement, otherwise we will publish their names'.

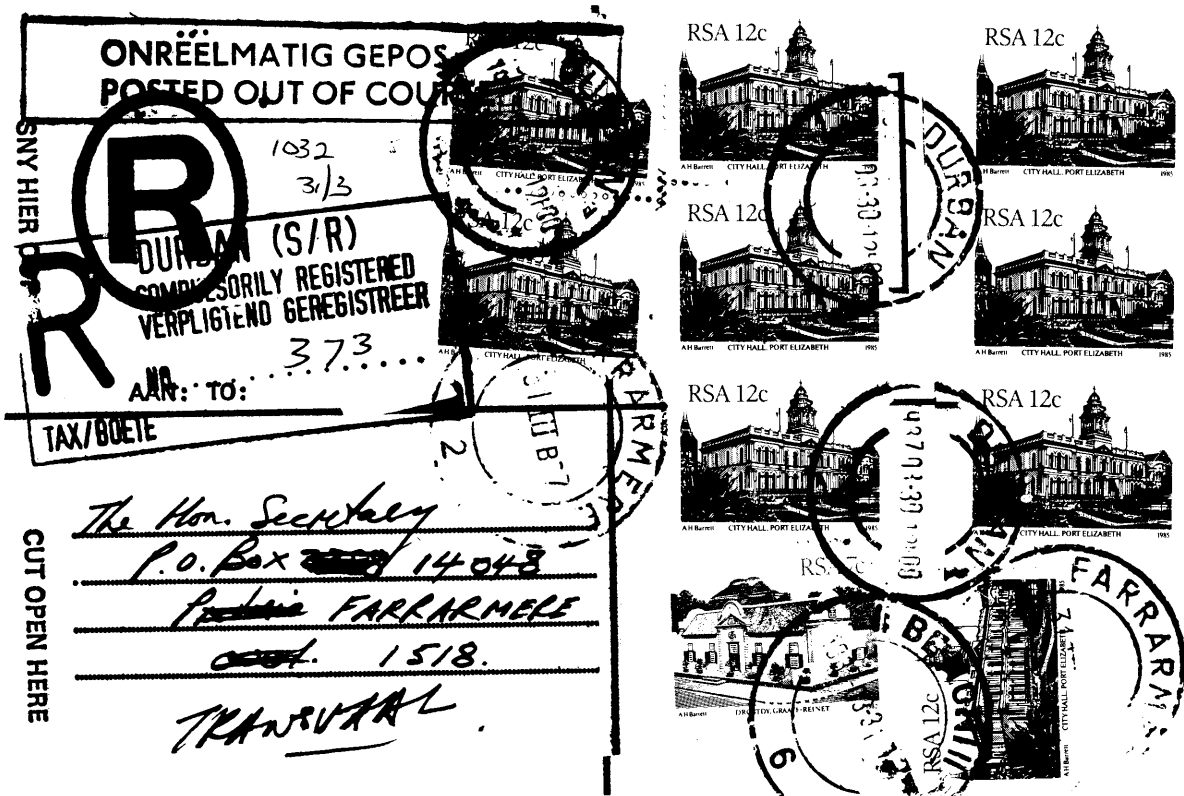
A most interesting item from the annals of stamp dealing in Africa and I wonder if any readers are able to contribute more information on Paulus and Co, or if there were any other dealers operative as early as 1897 in Durban. — **Danny Swart**

HAVE you ever seen such a mark on a registered letter?

A Durban collector, Mr R Bower, sent this registered item to the Expert Committee.

Unfortunately his letter was posted as ordinary mail — yet two days later it reached its destination as registered mail. At the top it has the oblong PO cachet of "Onreëlmattig gepos/Posted out of course", and below that a R cachet of Durban which tells the story.

The cachet reads "Compulsorily registered/Verpligtend geregistreer" and has a serial number in manuscript. At the bottom there is a line for "Tax/Boete" but after this a part of the cachet is painted out in white, as obviously the stamps on the registration envelope were adequate for the registration fee as well as



the fine.

The envelope was inadvertently posted in a batch of letters on 30 March 1987. In manuscript on the cover is a slip number 1032, dated 31/3, and the item was delivered in Farrarmere on the East Rand on 1 April.

Mr Bower's next item, properly registered at East End in Durban on 24 April, reached Farrarmere the very next day!

## BRITAIN'S

LEADING POSTAL AUCTION offers  
Direct every 4 weeks from UK 60 page Mail Auction Catalogue.  
(3 000 lots) from £10-£10,000 with Covers, Collections, Mixed  
lots, Specialised items from every country under the sun.

**FREE COPY!**

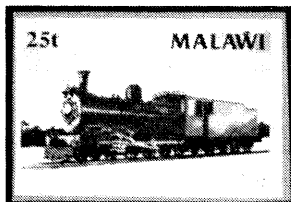


UK 0565 53214

on request write to  
SANDAFAYRE LTD, (Dept HK)  
Knutsford,  
Cheshire,  
WA16 6EH,  
ENGLAND



## WORLDWIDE NEW ISSUES



BOTSWANA New Definitives (20) R18,00  
Short Set 1t-P1(18) R5,50  
MALAWI Watted Crane, Steam En-  
gines or Hippos. EACH R2,50  
ST HELENA Royal Visits (Ships) R4,90  
SOLOMON IS Flower Defs (17) R15,00  
SWAZILAND Rhino R2,20  
ZAMBIA Tazara Railway (4) R2,60  
Guides (4) R3,00

Any new issues worldwide  
What about a standing order for any  
thematics or countries you require?  
Personal service  
Approvals available.

POSTAGE AND GST TO BE ADDED

**J N C BOONZAAIER**

PO BOX 237 WARMBATHS 0480 (75 KRETZCHMAR AVE) (015331-3025)

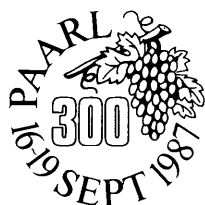
# GLOBAL STAMPS

520 Colonial Mutual Building  
330 West Street, Durban 4001  
Tel: 3049219 (24 Hours)  
P.O. Box 41262.  
Rossburgh 4072 Durban  
Hrs: Mon-Fri: 9.30 a.m.-2 p.m.  
Sat: 9.00 a.m.-1 p.m.

**Please contact us for the following:**

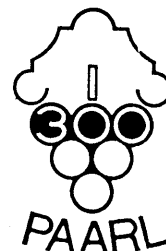
- 1 Free regular newsletter
- 2 Special offers
- 3 F.D.C.'s and all accessories
- 4 Free valuations
- 5 Lists of photo's and top investment items  
— 3 months to pay with no interest.
- 6 Apro service including thematics etc.

Write or telephone soon for prompt and honest service.



## PAARL 300 SPESIALE AANBOD

DEUR



**PAARLSE FILATELISTE EN SIMONSVLEI WYNKELDERS  
DRIE-BOTTTEL DRAPAK MET WYNE VAN OORSPRONG  
TEEN SLEGS R15 PER DRAPAK (AVB ingesluit)**

**Hierdie versamelaarstuk bestaan uit:**

- |                               |                       |
|-------------------------------|-----------------------|
| <b>1 x Cabernet Sauvignon</b> | <b>(1984 oesjaar)</b> |
| <b>1 x Shiraz</b>             | <b>(1984 oesjaar)</b> |
| <b>1 x Buketraube</b>         | <b>(1987 oesjaar)</b> |

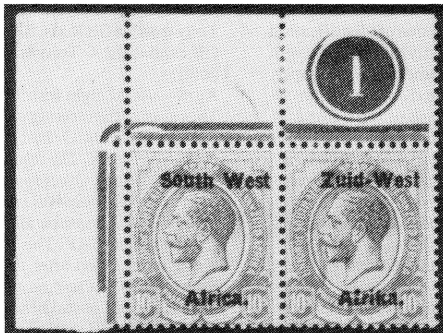
Bestellings in veelvoude van VIER drapakke na een bestemming, sal per spoor, op u eie risiko, spoorvrag deur u te betaal, deur die Simonsvlei Kelder aan u versend word. Kleiner bestellings vir 1 tot 3 drapakke, waarvoor 'n gemerkte koepon aan u versend sal word, moet by Simonsvlei Kelder, by inhandiging van die koepon, afgehaal word.

Slegs 3 000 van hierdie drapakke met uitstaande gesertifiseerde wyne word uitgereik. Bestel nou om teleurstelling te voorkom!

Stuur u bestelling, met die korrekte bedrag, aan **PAARLSE FILATELISTE, POSBUS 60, PAARL 7620.**

## High price

This SWA 1923 10/- corner pair with plate number, lightly hinged mint, realised a surprising £4 290 at a Harmers auction in London in July. It is catalogued at £2 500.



## It was Sunday for Sir Harry

IT occurred to Mr Cyril Rodwell of Pinelands that 28 June 1987 was the bicentenary of the birth of Sir Harry Smith, a colourful and remarkable soldier and governor of the Cape.

He made up private covers to mark the event and sent them to the postmaster of Harrismith, asking that they be postmarked on that day.

Later Mr Rodwell realised that 28 June 1987 was a Sunday, when post offices are normally closed. Yet to his pleasant surprise the covers arrived, with a fine Harrismith postmark!



## Society news/Onderonies

### FISH HOEK PHILATELIC SOCIETY

**July** — The meeting had three main interests, (a) the monthly letter competition, (b) the Thematic Cup competition and (c) a display and talk on early philatelic material of Mauritius by Mr Arthur Fitt.

(a) The Letter P was illustrated by Poland, Patiala, Penang, Pakistan, Passed Censor, Postal Coach, Peace, Pair, Panel, Passion, Postage dues, Prime Miister, Paintings, Post Boxes, Panama and Postmarks.

(b) There were five entries for the Thematic Cup, viz: Mrs R Douglas (winner), History of Boy Scouts and Girl Guides; Mrs M Reynolds, Beautiful New Zealand; Mrs Douglas, Composers; Mr J Hodgson, Mickey Mouse; Mr W Fischer, Rubens.

(c) But the real highlight of the evening was the exhibit and story of early Mauritius and its unusual postal history, this being the first British Colony to issue stamps.

Whilst we were not privileged to see the first of these, the legendary "Post Office" stamps of 1847, we were shown plate impressions amongst examples of plate wear (very rapid in those times). We were told that the plates disappeared in 1930 after being taken to Berlin. Also, that the words "Post Office" in these stamps was not an error as had been thought until recent times.

Another early novelty shown was the Perkins Bacon Plump "No value" and surcharged "Four Pence".

Otherwise, the main part of the collection was the De La Rue printings with die proofs, and colour trial surveys of the 1878 first decimal (Rupee/cents) issue, the early postal stationery, commemoratives, and the Queen Victoria Diamond Jubilee issue of 1898 (due to year previous), and Revenues (including an original Requisition to the Crown Agents). All very fascinating and too much to absorb at one sitting.

— Cameron Barnes

### HIGHWAY PHILATELIC SOCIETY

**June** — Among the 34 members were an Irish couple, Betty and Tommy Norgrove, and our Cinderella collector from Durban, Mr Mewett.

Ken Tebbit from the Edgewood Craft Village wrote a letter of thanks to the society for our attendance at the village, and hopes we will help again in the future. Our society has been asked to exhibit at the DLI in Durban in July, as they are having a military memorabilia.

Howard Lenton had a letter in the *Highway Mail* commenting on the interest shown by the public during our Stamp Day weekend. It is hoped there will be new members coming from the publicity.

Sleeves for keeping one's exhibit in are to be ordered and members were asked to place their requirements with the committee as soon as possible.

A new idea from overseas is an express envelope from GB Post Office. This issue costs £1,50 to be delivered anywhere in the world.

Many items of interest came to the fore during discussion time, ie the new increased cost of overseas aerogrammes, the frama machines and whether they are prospherized.

Margate issued a cover for National Stamp Day. It was called the Hibiscus Cover No 1. It has a special canceller. Cancellers were then discussed.

After tea a slide show on the Rhodesia took place,

proving how important it is to keep covers no matter what condition they are in, for they clearly showed history as it happened north of us. — Val Mann

### PHILATELIC SOCIETY OF JOHANNESBURG

**22 June** — Donned in their winter woollies, members of the PS of J ignored winter temperatures and gave the evening's five competitive exhibitors a warm reception. Temperatures really climbed when the exhibits appeared on the frames.

Hot favourites for awards at next year's presentation evening were Dr J Frank with another excellent Canadian collection and Jamie Smith with his superb postal history study of German East Africa.

Not to be outdone and hot on their heels were David Morrison with American Local Posts from 1839, Pierre Rubbers' intrepid study of the British King Edward VII definitive issue and Ken Pearce with an entertaining thematic presentation of indigenous trees of South Africa.

There was unanimous accord that exhibits of such high degree fires one with new enthusiasm for this wonderful hobby.

**14 July** — Rolling out a barrel, or more correctly, the bottles of wine, members did have a barrel of fun when they celebrated the 1250th meeting since the society was named the Philatelic Society of Johannesburg. Adding extra lustre to the evening was the very welcome presence of last year's mayor and mayoress of Johannesburg, Prof and Mrs Harold Rudolph.

With a glass of cheer in hand members and visitors viewed Walter Tilney's French collection of Art on Stamps and Danie Scheepers' 'A Tale of South Africa', to which several new additions had been added.

While the emphasis remained on philately, the approach to the evening was more casual and relaxed and here grateful thanks must go to the wonderful team of wives, especially Judy de Robeck, who contributed so unselfishly to the enjoyment of the evening.

Highlight of the evening was the presentation to the society by Prof Rudolph of the collection of postmarks of the Johannesburg post offices operational during centenary year 1986. The good news (hic!) is that the resounding success of that evening is sure to place a repeat performance high on the list of probabilities for next year.

Next on the programme:  
28 Sept — Visit from Wanderers Society  
13 Oct — Nine page exhibit  
26 Oct — Competitive evening. — Danie Scheepers

### PIETERSBURG PHILATELIC SOCIETY

**June** — A badly attended meeting with only 8 members present. A new member has joined and we welcome William Ziehl to our club. A swop session took place and proved highly profitable to all present.

**July** — Seven members and three visitors attended. President Solly Starkowitz announced that No 1 Hibiscus cover at R2,00 each was available from Lower South Coast P. Soc.

As usual a most interesting audio visual programme covering OFS was enjoyed. The exchange session which followed was enjoyed, it is only a pity that more members do not avail themselves of this opportunity of filling in those gaps in their collections. Most of the stamps are free as a kind lady donated a lot of her late husband's

spares and duplicates. Why not attend our next meeting? — Doug Southon

### RSA STAMP STUDY GROUP

During our meeting held on 18 June 1987 Isak Bernhardt showed two control blocks of the 14c Building series with a distinct colour difference. Speculation was rife as to whether the lighter shade could possibly be a reprint but in the absence of substantial proof, all had to accept that it was a case of under-inking.

It was also reported that the 16c from the same series has appeared in a white as well as a cream paper.

Dr David Kransdorff, who always seems to have something unusual up his sleeve, showed two postally used postcards from the Erica series with the PT-embellish. Although the quality of the card used to manufacture the postcards appeared to be similar to the official postcards, the difference was that they had an all-black printing and that the pre-printed stamp had been masked out (to avoid illegality?) and a 3c adhesive postage stamp applied. According to Dr Kransdorff, they were probably privately produced on a small lithographic printing press.

One member expressed his disappointment in that he had prepared special covers to commemorate the official opening of the Centenary Hall, Krugersdorp, which was officiated by the Administrator of Transvaal on 24 April 1987. Stamps from the Paardekraal Monument Series (1980) were used but the covers "got lost in the post".

Martie Vos exhibited a very comprehensive study of the RSA postage dues, a series which appears to be neglected by many philatelists.

— F van Rensburg

### RSA POSSEËL-STUDIEGROEP

Tydens die vergadering gehou op 16 Julie 1987 het die voorsitter genoem dat 'n 30c-aërogram die lig gesien het. Sommige lede van die groep kon nie wag om eksemplare by Filatelie te bekom nie. Seker bang gewees hulle gaan ook omtrent word soos in die geval van die "Voëls". Na verneem word, was baie versamelaars van hierdie pospapier — selfs seëlhandelaars — onkant gevang met laaggenoemde uitgawe en daar word nou naartstigtelik daarna gesoek.

Die tema vir die dag was "my geliefte koosde tien bladsye". Henning Pretorius het 'n interessante versameling van die 4c Protea-reeks getoon. 'n Item wat veral uitstekende was, was die onderste gedeelte van 'n vel met die velnommer op beide kante gedruk.

Nick Dorn se uitstalling was die diep- en steendruk uitgawes van die Geboue-reeks. Die uitstalling het slegs enkele seëls behels maar die manier waarop dit gemonster was met opskrifte daarby, het baie verbaas hoe veel gesê kan word deur slegs 'n paar bladsye te toon.

Die uwe het eersdags koeverte gewys wat onlangse eeufoeste herdenk. Giëlie de Swardt, ons voorsitter, het op sy beurt 'n wetenskaplike versameling van Frama posgeldstrokies vertoon — selfs een met die waarde R00,00. Wys jou wat die masjien sal doen as hy die dag vol streke is.

Bertha Roux is weer terug op die been — ekskuus al-twee bene — na haar heupoperasie. Ons het die

# FOR SALE

## STAMPS, PROOFS AND POSTAL HISTORY

Over 1000 lots of such material will be on offer in our next public auction to be held in Johannesburg, at the Rosebank Hotel, on 8th October, 1987.

Highlights include postal history from the 2nd Anglo-Boer War; Australia, with the very scarce 1915 "Roo" double print plus a large variety of modern errors; GB prestamp, maritime mail; OFS and Natal, featuring the 1857 1/- embossed issue on cover; Rhodesia with rarities such as the 1d "Double Head" imperf between pair (used) and an unused example of the 1d, perf 13½; South Africa with many spectacular errors and varieties; plus South-West Africa with emphasis on postal history of the German colonial period and later varieties and proofs.

Lots will be available for inspection at our Johannesburg premises also in Cape Town (15th September); at the Paarl National Exhibition (16/19th September) and in Windhoek (25th September).

Contact us now for further details.

Fully illustrated catalogues are available from us (price R8).



**STANLEY GIBBONS (PTY) LTD**

(77/00037/07)

P.O. Box 930  
PARKLANDS 2121

Tel. Office: (011) 880-3905/6  
Shop: (011) 880-3549

# SOUTH AFRICAN TRANSPORT SERVICES

## AWARDS..



## ...THE WHEELS THAT KEEP A NATION ON THE MOVE!

By air, sea, rail, road or pipeline, South African Transport Services is transportation. That's why, for over 75 years, we've concentrated on providing South Africa with the best possible transportation systems. The kind of transportation network it needs to grow and prosper.

Since the turn of the century, South Africa has come a long way. Cities have been built. Industries developed. A nation has grown and prospered. At South African Transport Services, we're proud to be a part of this growth.

South African Transport Services. The wheels that keep our nation moving forward to a future as strong as our past.

**S.A. TRANSPORT SERVICES**  
WE'RE ALL FOR YOU 

LITHOGRAPHED BY  
HILLEX PRINTERS (PTY) LTD  
(011) 683-4334