

Philatelist



R1,00
incl. tax

REGISTERED AT THE GPO AS A NEWSPAPER

Vol 61 No 10

October/Oktober 1985

NOVEMBER AUCTION PROGRAMME

- 7th BOURNEMOUTH** — General Sale with general collections, British Empire, Great Britain & Foreign.
- 12th ZURICH** — Europe with strong section of Germany with the States, Colonies, Memel and Saar. Collections of Portugal and Spain together with the colonies of France, Portugal and Spain; a specialised collection of unusual character covering the Transcaucasian Federation. Also selected rarities from the F.T.K. Caroe Denmark.
- 13th ZURICH** — Italian States comprising Papal States and Sicily with a few other Italian States. There are some remarkable studies and spectacular covers.
- 14th ZURICH** — Far East including a valuable collection of China, fine lot of Chinese and Thai proofs and a collection of the postal history of Singapore.
- 15th ZURICH** — Latin America including a further portion of the Brazil which could not be included in the June sale, fine die proofs, etc.
- 26th LONDON** — Denmark — the specialised collection of Denmark formed by the late F T K Caroe and a study of Danish West Indies.

Catalogues: B'mouth R6, London R8, Zurich R14 each

from

Mr D G Crocker, PO Box 482, Florida, Transvaal 1710

or



CHRISTIE'S
ROBSON LOWE

47 Duke Street, St. James's, London,
SW1Y 6QX, England

Cables: "Stamps London SW1" Telex: 8950974



WANTED TO BUY

We have R50 000 available to purchase stock
of the

RHODESIA'S 1932 — 1980

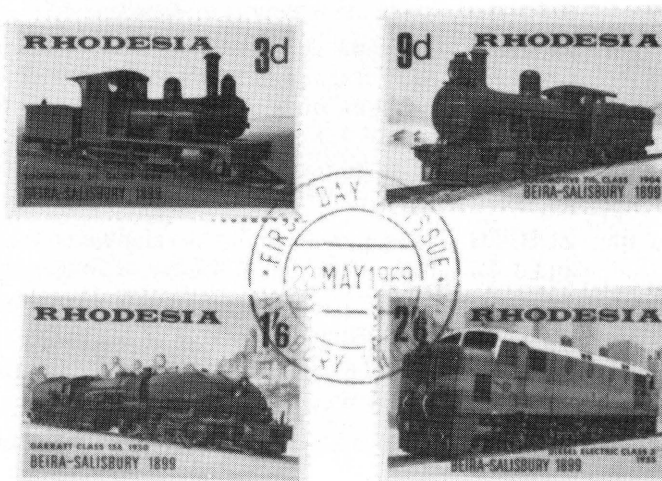
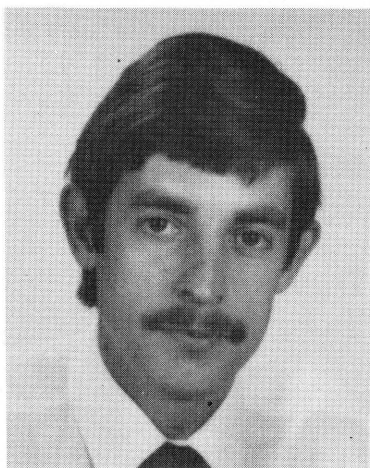
All must be in finest unmounted mint
condition.

We will visit anywhere in the RSA to view big
accumulations/collections.

ANY QUANTITIES/SETS WELCOME

PREMIER STAMPS

PO Box 3761, North End
6056 Port Elizabeth
Republic of South Africa



Wholesalers / Retailers
Rhodesias and Ciskei

Mike Koyd, Tel. 0422 — 22740

MONDAYS — SATURDAYS
OFFICE HOURS ONLY

Philatelist

Vol 61 No 10 — October 1985 — Whole No 727

CONTENTS/INHOUD

The task is now to reach out	233
Handbook ready for Jhb 100.....	234
Expert Committee streamlined	234
Schools competition disappointing	234
Nuwe seëls/New issues	235
East Rand plans mini-exhibition	237
Venda: Special stamp issue	239
RSA: Building series roll stamps	241
Venda: Special issue — Ferns	244
SWA: Stamp Booklets.....	246
Elpex/Olfu 85	247
Is this the first SA charity seal?	250
Briewebus/Letterbox	251
OBITUARIES.....	252/253
Recalling the 1936 Empire Exhibition	255
Seëlnuus uit Nederland: Verset en bevryding 1940-1945....	256
Special offer from ATA	257
Society News/Onderonies	258
Wants, offers and exchange	259

Published by The Philatelic Federation of Southern Africa,
PO Box 375, Johannesburg 2000
Uitgegee deur die Filateliese Federasie van
Suider-Afrika, Posbus 375, Johannesburg 2000

Intekening/Subscription: SA — R10 (incl GST) Elsewhere — R15
Single copy price: R1 inc. postage

THE SA PHILATELIST MANAGEMENT AND EDITORIAL BOARD/ REDAKSIE- EN BESTUURSKOMITEE:

Hon Editor:

Joh Groenewald RDPSA
PO Box 4430
0001 Pretoria

Other member:

Mr Natie Becker RDPSA

Honorary Correspondent Natal

Eddie Howie, 2 Glenlorne,
31 Vause Road, Durban 4001.
Tel H (031) 21 2892

Erekorrespondent Wes-Kaapland

Wilhelm Grütter, Posbus 2789,
Kaapstad 8000. Tel H (021)
23-8763, W (021) 24-5280

Subscriptions and advertising:

J Michelson, RDPSA, FRPSL, PO Box 375, Johannesburg 2000

Change of address? Please send the addressed wrapper of your last copy with a note of the new address to the Hon Secretary PO Box 375, Johannesburg, three weeks in advance.

Advertising rates on application from Mr Michelson (address above).
Correspondence to the Hon Editor (address above).

Expert Committee/Keurkomitee: Hon Secretary, PO Box 2388, Pretoria 0001. Meets third Saturday of each month.

South African Philatelic Dealers' Association/Suid-Afrikaanse Filateliese Handelaarsvereniging: For up to date membership list send SAE to Hon Secretary, PO Box 31193, Braamfontein 2017.

The task is now to reach out to thousands

IN ITS FIRST year of functioning the Philatelic Federation's latest committee has set itself a daunting task — to reach those thousands of stamp collectors in Southern Africa who are not members of philatelic societies and stamp clubs.

"The well-being of our hobby depends on the involvement of all those who enjoy the pleasures of stamp collecting," says Mr Andries van der Walt, convenor of the new Public Relations and Promotions Committee.

He explains that many stamp clubs are struggling for survival — if their ranks are swelled by new and more members, they will be able to function more effectively, and offer more to their members.

Mr van der Walt says a market investigation has suggested that there are over 105 000 stamp collectors in South Africa, yet only 5 000 are members of stamp societies and clubs.

To reach this known potential, the Public Relations and Promotions Committee has structured its work at two levels: the national and the local level.

"At local level we need the input and co-operation of societies themselves," Mr van der Walt says. "Perhaps each society should designate a promotions officer or PRO, with whom we can liaise."

There are numerous opportunities for societies to promote themselves in their own areas, and Mr van der Walt has circularised all societies with hints and tips on how to go about it.

At national level the committee has generated positive contact with the Department of Education and Culture, and hopes to involve all regional cultural officers. Contact with the SA Institute of Librarianship and Information Science has resulted in publicity for stamp collecting in a newsletter which reaches 2 600 libraries. Negotiations are also proceeding with the 80 000-member Simba Cub Club.

As part of the committee's promotion for Elpex/Olfu it arranged an East London newspaper competition, with R500 in prize money sponsored by SAPDA.

"And we are proceeding with a variety of other activities," says Mr van der Walt.

He has invited societies to contact him at the Total Stamp Club, PO Box 11277, Johannesburg 2000, or telephone (H) (011) 972-4417.



Just a reminder that provisional entries are due for receipt by 30 November as also are the competition counterfoils (with remittance of course). The draw for the 2 air tickets to New York will take place at a special function at the Rosebank Hotel in Johannesburg on 15 January 1986. SAPDA will be hosting this function. The Mayor of Johannesburg has consented to be present.

Handbook ready for Jhb 100

All set and ready for Jhb 100

IF ANYTHING, the awards realised at the Elpex/Olifu 85 national stamp exhibition this year add to the spirit of keen anticipation with which collectors are looking forward to Johannesburg 100, next year's international stamp exhibition.

To qualify for competitive entry at the international exhibition, a collection must have gained at least a silver medal at a national stamp exhibition.

It is clear that many collectors entered collections at Elpex in order to qualify for Johannesburg 100. The awards list speaks for itself.

The next step towards international participation is the preparation of provisional entries, which are now being awaited by the Johannesburg organisers until the end of next month.

• • •

Beautiful memories

IN THIS issue we record the passing of stamp friends of many years.

To their beloved ones we can but say: that which is no more, remains as fond memories of fine friendships, cherished by hundreds of collectors.

— The Editor/Die Redakteur

Schools competition disappointing

THE 9th annual Cape interschools stamp competition was held under the auspices of the Royal Philatelic Society of Cape Town at the Athenaeum, Newlands, on 25 July 1985. The event was once again organised by Mr Sam Kaganson.

The jury consisted of Messrs R Jeidel RDPSA, H C Berneaud, A H Scott, C F J Muller and Dr H Gottschalk.

Only three schools, namely Diocesan College (Bishops), Plumstead High and SACS participated, which was rather a disappointment. There were 32 exhibits and a great improvement was noticed in the standard of presentation. Obviously comments by the judges in the previous competition had been taken to heart by the entrants.

The winner of the Interschool Shield was Bishops for the fourth successive year. The A W Jaffe Cup for the best exhibit was awarded to Anton Potgieter (Bishops) for his thematic exhibit "Medicine".

The top awards in the different age groups were as follows:

- 13 years: S Mildenhall (SACS) — Transkei
- 14 years: G Frater (Bishops) — Van Diemensland/Tasmania
- 15/16 years: A Potgieter (Bishops) — Medicine
- 17 years + : W Mudge (Bishops) — Birds of South Africa

— Dr H Gottschalk

SEËLRUIL GEVRA — 'n Gesin wat 12 jaar in Suid-Afrika gewoon het en nou in Nederland terug is, vind dit baie moeilik om eietydse Suid-Afrikaanse seëls daar in die hande te kry. Hulle sal graag wil korrespondeer en seëls ruil: die familie R G Kant, Loodskotterhof 46 II, Amsterdam 1034 CN, Nederland.

THE LONG-awaited new handbook on the stamps of the Union of South Africa is being typeset and will be published next year, prior to the Johannesburg 100 international stamp exhibition.

Mr David Crocker, chairman of the Publications Committee, gave this good news to the Philatelic Federation's Management Committee meeting last month.

Union of South Africa expert Mr Jack Hagger RDPSA spent more than 12 years compiling, checking and revising the data for the book.

Mr Crocker said 100 luxury copies of the book would be made available, and collectors would also be able to purchase copies of the normal edition at a pre-publication discount price.

He added that his committee was now looking for authors for a companion volume to the handbook, being a compendium covering aerograms, postal stationery, Christmas seals and similar fields of Union of South Africa philately.

The Management Committee last month elected Mr Jonas Michelson RDPSA as its chairman for the new year and then set to work on a number of issues referred to it by the philatelic congress in August.

Past President Miss Mary Bromfield was named chairman of a subcommittee to devise a suitable date and action plan for the national stamp day.

Proposals were discussed for the penalisation of collectors who confirm entries for national stamp exhibitions and then withdraw at the last moment, and a suggestion will be put to the General Purposes Committee at its meeting on 8 November.

A contractual agreement will be drawn up for philatelic societies wishing to rent frames for stamp exhibitions. Meanwhile Mr Harry Birkhead RDPSA for the Exhibitions Committee presented R7 000 to the Philatelic Foundation, being savings effected by the committee in the last three years through judicious handling of transport and storage matters.

As the Federation's representatives on the Philatelic Foundation board were named the President, Mr Stan Naylor (with Miss Bromfield, the past president, as alternate), Mr Jan H Smith (alt Mr Crocker), Mr Birkhead (alt Mr George van den Hurk) and Mr Danny Swart (alt Mr Michelson).

In terms of the new postmark rulings for the annual stamp exhibitions, the Management Committee formally decided to approach the Post Office for a slogan machine postmark on Johannesburg 100.

An offer by the family of the late Terrence Radue was accepted for a new floating trophy for the best foreign exhibit at national stamp exhibitions. This will be known as the Terrence Radue Trophy.

Expert Committee streamlined

THE EXPERT Committee of the Philatelic Federation is now able to handle stamps and philatelic material referred to it with the minimum of delay.

Mr David Crocker, chairman of the Expert Committee, says streamlining of work has allowed the committee to catch up with the backlog of items awaiting expertisation. The committee meets monthly and now tries to handle items submitted to it at the very next meeting, unless overseas referral is required.

Millsite again — A reader in New York, D Paul O'Shaughnessy, has also pointed the way to Millsite. He recalls a Millsite signpost on the south side of the Main Reef Road, almost opposite Randfontein Estates, which is recognised by the *Guinness Book of Records* as being the largest man-made mountain in the world.

NUWE SEËLS / NEW ISSUES

Eerskomende seëluitgawes

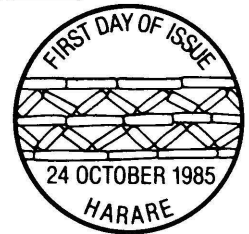
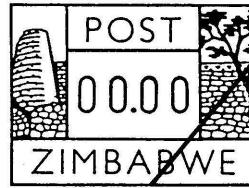
EERSKOMENDE seëluitgawes van Suid-Afrika en die Intersafa-lande is:



- 17 Okt — SWA Inheemse tradisionele musiekinstrumente (12c, 25c, 30c, 50c). Die eerstedagstempel is vir Rundu en toon die 'vingerklavier' lidumu-dumu.
- 25 Okt — Bophuthatswana, tweede vaste reeks, 'Nywerhede', altesaam 17 waardes van 1c tot R2 (twee voorlopers tot hierdie vaste reeks is vroeër uitgegee: die 11c op 2 April 1984 en die 12c op 1 April 1985). 'n Eerstedagkaart word uitgegee en die eerstedagstempel van Mmabatho toon die heraldiese luiperd-embleem.
- 5 Nov — RSA, Kultuurerfenis: Kaapse silwer. Die seëls is in *The SA Philatelist* van Januarie 1985 afgebeeld (bl 4) maar nie beskryf nie, en hier is dus 'n kort beskywing:
 12c 'n tipiese silwermandjie of servies, gebruik vir suikerklontjies.
 25c 'n seldsame Kaapse silwer-teepot.
 30c 'n versierde dubbelhandvatsel-beker.
 50c 'n peervormige versierde Kaapse koffiepot.
- 15 Nov — Ciskei, Troepe skepe (12c, 25c, 30c, 50c).

some of the nation's historical treasures are on display. 35c — The National Archives complex, built in Harare in 1961.

The first-day postmark shows a stylised '50' and the FDC features a Thomas Baines drawing of a young man in 1870.



Vending labels for Zimbabwe

POSTAGE VENDING Machine labels will be introduced 'experimentally' in Zimbabwe on 24 October 1985 at the main post offices of Bulawayo, Gweru and Harare, and at the Philatelic Bureau in Harare.

The vending machines will deliver postage labels in any value from 1c to \$99,99 and in addition will have three pre-set values of 12c, 18c and 26c.

To operate the vending machine, one inserts coins and presses selector buttons to have labels of the desired values printed. The machine does not give change, but will issue a label for the balance.

The postage labels are printed in red on adhesive stamp paper, measuring 40 mm x 32 mm.

Zimbabwe's Post and Telecommunications Corporation says the labels can be used "in conjunction with or as a replacement for postage stamps". On letters they will be cancelled as a postage stamp.

The design on the label represents Great Zimbabwe and the first-day postmark also has a Zimbabwe motif. First day covers with a 26c label may be ordered from the Philatelic Bureau, PO Box 4220, Harare, Zimbabwe.



Old sign for new issue

THE OLD alchemistic sign for copper and the chemical symbol for the mineral, Cu, appears in the design of a special temporary datestamp which will commemorate the 300th anniversary of the discovery of copper in Namaqualand by Dutch governor Simon van der Stel.

The datestamp will be used at Springbok, main centre of Namaqualand, on 21 October 1985.

A commemorative cover and a datestamp card will be available.

We also illustrate two temporary special datestamps used in conjunction with this year's Pretoria Show to mark the participation of Bophuthatswana (leopard emblem in postmark) and Venda (elephant head emblem). The fixed dates of both postmarks were 28 Aug-7 Sept 1985.



Zimbabwe Archives celebrate

ZIMBABWE issued four stamps for the 50th anniversary of the country's National Archives on 18 September 1985.

- The stamps show —
 12c — Mutapa Gatsi Rusere, ruler of Mashonaland and the Zambezi area 1589-1623.
 18c — Lobengula, head of the Ndebele domain, 1870-1894.
 26c — The exhibition gallery of the National Archives, where



MOCAMBIQUE's set of four stamps for the 10th anniversary of independence depicts 'heroes of colonial resistance' and battle scenes from various parts of the country in the period 1868-1917.

The stamps of 1, 4, 8 and 16 MT were issued in 70 000 complete sets on 25 June 1985.

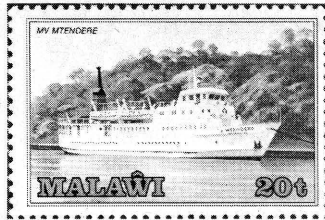
The next day, 26 June 1985, one 16 MT stamp was issued for the 40th anniversary of the United Nations.



MALAWI het op 3 Junie 1985 vier passasiers- en vragvaartuie van die Malawimeer op seëls afgebeeld:

- 7t — MV Ufulu
- 15t — MV Chauncy Maples
- 20t — MV Mtendere
- K1 — MV Ilala

Die seëls is in Frankryk gedruk.



ST HELENA in July (the Crown Agents says it might have been August) issued a set of five stamps showing fish of the Atlantic. Some of these also frequent Southern African shores.

7p — Rock bullseye, *Apogon axillaris*

11p — Mackerel, *Scomber colias*

15p — Skipjack tuna, *Katsuwonus pelomis*

33p — Yellowfin tuna, *Thunnus albacores*

50p — Stump, *Scyllarides herklotsi*, which is actually a 'slipper lobster', a crayfish cousin.



ASCENSION ISLAND's latest commemorative stamp issue (again, date not confirmed by the Crown Agents) shows guns on the island — three muzzle loaders and a 5.5" gun from the illfated *HMS Hood*, once the heaviest battleship in the world. The stamps also show ship and artillery crests.



A total of 4 500 covers was prepared, cancelled with a special IYY postmark for Gaborone.

At the same time International Youth Year cancellers were introduced at 12 major post offices, for use on all mail for the remainder of the year.

The set for the centenary of Botswana's Police was issued on 5 August 1985 — and again the Botswana Post Office has produced a most informative historical overview to add interest to the stamp issue.

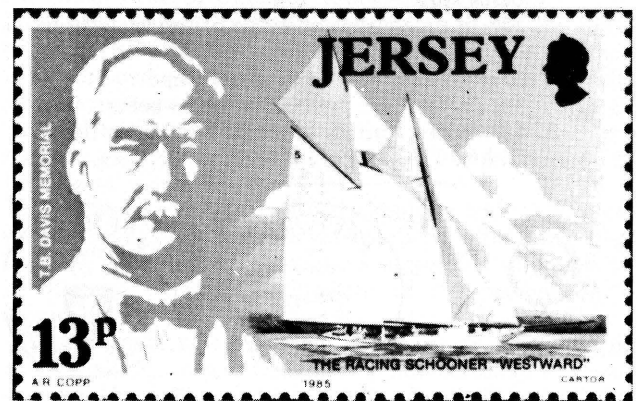
While the FDC shows a modern policeman directing traffic in Gaborone, the stamps designed by Viera Larsson reflect a hundred years of history:

7t — Bechuanaland Border Police of 1885-1895, a colonial mounted police force based at Mafeking and patrolling both Bechuanaland Protectorate and British Bechuanaland Colony.

10t — Bechuanaland Mounted Police of 1894-1902, which was linked to the BSA Police and had a Protectorate Native Police division.

25t — Bechuanaland Protectorate Police of 1903-1966 — the stamp illustrates a camel patrol from Tsabong, in the Kgalagadi region.

50t — The modern Botswana Police, expanded considerably since independence in 1966.



T B Davis, Suid-Afrikaanse verskeppingsmagnaat, en die wedrenskoener West Ward (13p-seël).

SA verskeppingsmagnaat op Jersey se seëls

'N GROOT NAAM in suid-Afrikaanse handelskeepvaart word op 25 Oktober 1985 met 'n stel van vier seëls deur Jersey vereer. Hy is T B Davis, die verskeppingsmagnaat wat die opleidingskip *Generaal Botha* vir die opleiding van kwekelinge vir die handelsvloot aan die Suid-Afrikaanse Regering geskenk het.

Die vier seëls toon Davis en van sy nalatenskappe in Jersey en sal op die uitgawedag in Suid-Afrika beskikbaar wees van Jersey se plaaslike filatelie-agent, The Stamp Arcade in Port Elizabeth.

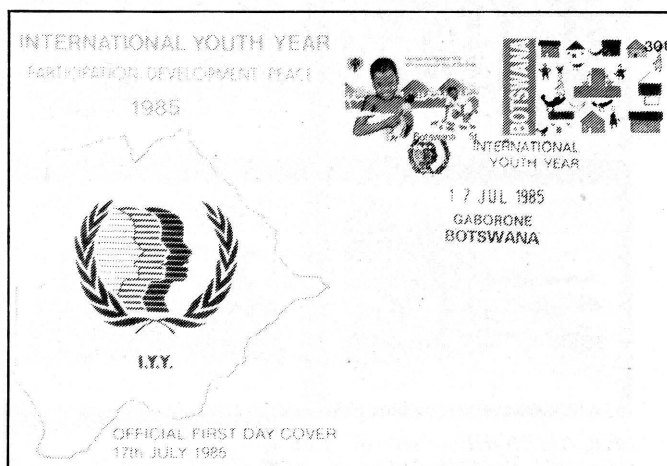
Davis was 'n merkwaardige man, wat van dekseun uitgestyg het tot magnaat en weldoener, met 'n groot liefde vir sy geboorte-eiland en sy aangenome vaderland.

Thomas Benjamin Frederick Davis is in 1867 as seun van 'n skeepstimmerman op Jersey gebore. As 14-jarige is hy see-toe as leerling op 'n seilskip.

Kort daarna het 'n nagtelike storm in die Noordsee 'n tou laat breek, en hy was 'n drywende drenkeling in 'n klein bootjie. 'n Dag later het die Noorse vaartuig *Urda* hom opgepik. Hy is by Cowes aan wal gesit en het op 'n Sondagoggend teruggekom op Jersey.

Davis is direk na die kerk waar hy koorseun was — en waar hy gevind het dat 'n roudiens vir hom aan die gang was!

As 30-jarige is hy na Suid-Afrika, waar hy hom in Port Elizabeth gevestig en voorlank 'n belang in 'n stuwadoorsaak gekoop het. In die volgende dekadde het hy die beheer oor die



Special covers for Youth Year

BOTSWANA used two stamps from previous stamp issues for its official International Youth Year commemorative cover on 17 July 1985.

The cover is franked with the 5t value from the International Year of the Child set (issued on 24 September 1979), showing children at play in front of a traditional court yard, and with the 30t 'Village water supply' design of the Children's art stamps issued on 15 February 1982.

kaaimeestersbedryf vanaf Port Elizabeth tot Dar es Salaam verkry, en 'n groot onderneming uitgebou.

Davis het sy groot rykdom middelklik aangewend. Hy het die wetenskaponderrig aan die Natalse Universiteit in Durban opgerig en begunstig.

Die opleidingskip *Generaal Botha*, jare sinoniem met Gordonsbaai en vandag die skeepvaartkollege by Graingerbaai, is deur hom aan die Unie-regering geskenk. Met die begin van die Tweede Wêreldoorlog het hy 'n fonds van £100 000 vir die afhanklikes van Suid-Afrikaanse diensdoendes gestig.

'n Tragiese gebeurtenis vir Davis was die dood van sy seun Howard Leopold in die Slag van die Somme in die Eerste Wêreloorlog. Die meeste van Davis se geskenke aan Jersey was ter herinnering aan Howard, en dit is vanjaar die 50e herdenking van die opening van die Howard Davis Hall by Victoria College.

Een seël toon die saalgebou, ander die park en Jersey se landboukollege wat T B Davis ter ere van sy seun Howard geskenk het.

Davis was lief vir seil, en in 1924 het hy die wedrenskoener *Westward* gekoop. Met die vaartuig het hy talle groot wedvaarte gewen, ook teen koning George V se Britannia.

Toe hy 50 jaar na sy redding deur die *Urda* Noorweë vir die eeufeesviering van seilwedvaart in Skandinawië besoek, het Davis met die hulp van koning Haakon gevind dat van die skip se bemanning net die skeepstimmerman nog lewe — dit was die man wat hom uit die water gepluk en hom gelawe het.

Davis het die ou man ryklik beloon, en so ook die naasverwante van die ander bemanningslede.

T B Davis is in 1942 in Suid-Afrika oorlede.

Maxi cards to promote philately

THE PHILATELIC FOUNDATION, the fund for the promotion of philately jointly organised by the Philatelic Federation of Southern Africa and the South African Post Office, will make a set of maximum cards of the new Bophuthatswana definitives available to collectors.

This follows negotiations between the Foundation, the Bophuthatswana Government and Philatelic Services and Intersapa.

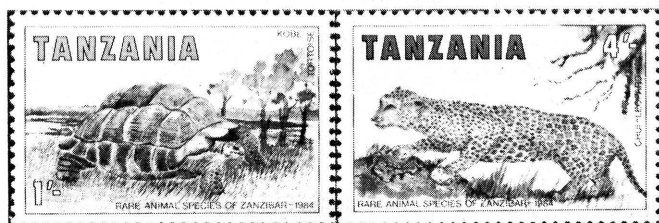
Last year the Foundation produced (and sold) 6 000 sets of maximum cards in respect of Transkei's second definitive series.

The new Bophuthatswana set will comprise 18 maximum cards (to include the 12c definitive issued on 1 April 1985). Each card will picture the original photograph used for the stamp design, with the relevant stamp affixed and cancelled with the special Mmabatho postmark of 25 October 1985.

A total of 5 000 sets will be produced and will be sold at R15,00 each (GST, registration, postage and packing included) by the Philatelic Foundation, PO box 2492, Pretoria 0001.

Proceeds of the exercise will be used for the promotion of philately.

Diersoorte van Tanzanië op nuwe seëls



VERSAMELAARS van diere op seëls sal belang stel in 'n nuwe reeks van Tanzanië wat seldsame diersoorte van Zanzibar afbeeld.

Op die seëls staan die jaartal 1984; die Kroonagente het pas laat weet dat die seëls blykbaar in Mei vanjaar verskyn het.

Daar is vier enkel seëls en 'n miniatuurvel met twee hoërwaardes. Die diere op Zanzibar is nie net seldsaam nie, maar grootliks bedreig:

- 1/- Skilpad, tortoise, *Testudo sp.* Enkele groot en baie ou skilpaaie leef nog op Zanzibar en Pemba-eiland.
- 4/- Luiperd, leopard, *Panthera pardus adersi*, 'n klein soort luiperd met heel klein kolletjies.
- 10/- Siwetkat, civet cat, *viverra civetta*.
- 17/50 Rooi kolobus-aap, red colobus, *Colobus badius*, wat in die Jozani-woud van Zanzibar voorkom.
- 15/- Swart renoster, black rhinoceros, *Diceres dicornis*.
- 20/- Reuse-ietermagog, giant ground pangolin, *Mins smutsia gigantia*.

VANJAAR was die *Bauhinia*-species Suid-Afrika se 'boom van die jaar' (kyk *The SA Philatelist*, Junie 1985, bl 159). 'n Mooi en gewilde bauhinia wat talle tuine versier, is die Hong Kong-orgideeboom, *Bauhinia blakeana* — nou in die stel van ses blomseëls wat Hong Kong op 25 September 1985 uitgegee het.



BOTH Mauritius and Seychelles on 24 August 1985 issued stamps for the second Indian Ocean Island Games, illustrating between them athletics, boxing, cycling, football and swimming. Both have windsurfing on the highest value, in each case, 10 rupees.

East Rand plans mini-exhibition

THE MINI-exhibition staged by the East Rand Philatelic Society from 5-9 November 1985 will comprise a total of 146 frames and will be held in the John Barrable Hall, Northern Areas Sports Grounds, Benoni.

The exhibition will be open as follows:

- 5 Nov — 12h00-20h00
- 6 Nov — 14h00-19h00
- 7 Nov — 14h00-19h00
- 8 Nov — 14h00-20h00
- 9 Nov — 09h00-18h00

Exchange wanted — M Frybort (jr), Mädergutstrasse 37, CH — 3018 Berne, Switzerland, is a 22-year-old collector seeking a penfriend in South Africa.

Exchange wanted — Another listener to the Spanish service of Radio RSA would like to correspond (in English) and exchange stamps: Enrique F Clavijo, Avda Dr Francisco Soca 804, Ciudad.

**AUCTION
NO 84**

JOHANNESBURG PHILATELIC AUCTIONS

Tel: 23-5555 or 23-5278

PO Box 10719 Johannesburg 2000

Wednesday 23 October 1985



VENUE: Our Auction Rooms 6th Floor
SA Centre 253 Bree Street
(opposite Rand International Hotel)

TIME: 6.30 p.m. precisely

AUCTIONEER: Mr P Ashman/Mr D Taylor

VIEWING: Sunday 20th October 9.30 a.m. — 3.00 p.m.
Monday to Wednesday 21st/22nd October 11.00 a.m. — 3.30 p.m.

Otherwise by prior arrangement

NEXT AUCTION

Wednesday 27th November 1985

VENDA

Special stamp issue

Food from the Veld (1985.06.21)

by M J H Tonking and G J de Swardt

THE four postage stamps depicting various edible wild fruits are designed by Sheila Nowers.

Technical data

Job number: 6877898. Expected date of printing: 18.4.85

Number of sheets ordered: 12c 40 000

25c, 30c and 50c 25 500 each.

Master negative and multi-negative lithography: new

Lithographic plates:	12c	25c	30c	50
Tricolour blue	502	507	511	515
Tricolour yellow	503	508	512	516
Tricolour red	504	509	513	517
Brown mixed	505			518
Black	506	510	514	519

Plate layout: 2 x 3 sheets each of 2 x 5 stamps sized 28,70 x 38,07 mm

Printing press: Heidelberg speedmaster number 784

Perforator: Bickel 14,25 x 14,00

Paper: Harrison matt surface non-phosphor coated. Gum: PVA

Paper sheet size: 630 x 295 mm

The panes may be identified as follows:

Pane layout:	A	B	C
	D	E	F
	12c		

Pane A: Cannot identify

Pane B: S.M. — White dot adjoining '5' in 502 colour block.

Pane C: S.M. — Black dot in bottom left corner of yellow colour block. 503

Row 2/1 — Green dot below '2' of 12c.

Pane D: S.M. — White dot below and to right of '5' in 506 black colour block.

S.M. — Small green dot 1,5 mm below 505 colour block in line with '0'. 505

Pane E: C1/2 — White spot on far right side of stamp between branch and top right leaf.

Pane F: C1/2 — Green blob in frame 2 mm above stem on right side of stamp.

25c

Pane A: Row 2/1 — Red dot in left perforation gutter 3 mm from frame and 8 mm below top left corner of stamp.

Pane B: C2/1 — Blue dot in top left corner of stamp 3 mm from left frame.

Pane C: C2/2 — Blue dot in right perforation gutter 16 mm below top right corner.

Pane D: S.M. — Small white dot next to top left of '0' in 509 colour block. 509

Pane E: Row 1/3 — Red dot in right perforation gutter 5 mm below top right corner.

Pane F: Row 1/1 — Red dot in top perforation gutter 1 mm above top frame line and 8 mm from top right corner.

30c

Pane A: S.M. — Green dot 3 mm above top left corner of 512 yellow colour block. 512

Pane B: C2/1 — Blue dot in top left leaf of plant 1 mm below top margin.

Pane C: S.M. — Two faint white dots to left of 5 in 514 black colour block. 514

Pane D: Row 1/1 — Black dot below first '1' in Citrullus.

Pane E: S.M. — White dot below cross arm of '1' in 514 black colour block.

Pane F: Row 2/1 — Black dot between '3' and '0' in 30c. 30

50c

Pane A: C1/1 — Two black lines on left side of leaf nearest right frame of stamp.

Pane B: Row 1/2 — Black dot above right hand leg of 'N' in VENDA.

Pane C: S.M. — two red dots 6 mm below '5' in 519 black colour block.

Pane D: T.M. — Red dot 4 mm to right of PT emblem in line with elephant's ear.

Pane E: Row 2/2 — Green dot outside and adjacent to top left corner of stamp.

Pane F: S.M. — Red dot in top of second '5' in 515 blue colour block. 5

CISKEI

Special stamp issue

International Youth Year
(Girl Guides 1985-05-03)

by M J H Tonking and G J de Swardt

TO commemorate the International Youth Year the Ciskei has issued four postage stamps designed by Sheila Nowers and depicting Girl Guides which have their 75th anniversary this year.

Technical data

Job number: 6877696. Expected date of printing: 14.3.85

Number of sheets ordered: 12c 48 000

25c, 30c and 50c 26 500 each.

Master negative and multi-negative lithography: new

Lithographic plates:	12c	25c	30c	50
Tricolour blue	280	284	288	292
Tricolour yellow	281	285	289	293
Warm red	282	286	290	294
Black	283	287	291	295

Plate layout: 3 x 2 sheets each of 5 x 2 stamps sized 38,07 x 28,70 mm

Printing press: Heidelberg Speedmaster number 784

Perforator: Bickel 14,00 x 14,25

Paper: Coated Papers Ltd. matt surface non-phosphor coated. gum: PVA

Paper sheet size: 295 x 630 mm

The panes may be identified as follows:

Pane layout:	A	B
	C	D
	E	F

12c

Pane A: S.M. — Small black dot 5 mm above 2 in 281 yellow colour block.

Pane B: Row 5/2 — Black dot outside design 0,75 mm above 'E' of CISKEI.

Pane C: C2/2 — Tiny black dot 1 mm diagonally and below and to right of '5' in 1985.

Pane D: Cannot identify.

Pane E: S.M. — Blue mark in top circle of '8' in 280 blue colour block.

Row 4/2 — Black dot immediately below '9' in 1985.

Pane F: Row 2/2 — Broken top of '2' in 12c.

Row 3/1 — Black dot 2 mm below '1' in 12c.

25c

Pane A: C2/2 — Red dot on hem of standing Guide's skirt in line with knee.

Pane B: Row 5/2 — Black dot in perforation gutter above 'KE' of CISKEI.

Pane C: C2/2 — Black dot in line with standing Guide's elbow.

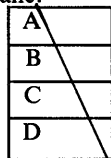
This page has been sponsored by
PHILATELIC SERVICES AND INTERSAPA
GPO, 0001 Pretoria.

By opening a deposit account with Philatelic Services and INTERSAPA, with an initial deposit of R30, you are assured of receiving on a standing basis all new philatelic material of your choice in respect of RSA, SWA, Transkei, Bophuthatswana, Venda, Ciskei and private organisations.

First reprint: Standing master negative. New multipositive.
 New cylinder S40. Colour purple.
 Layout of cylinder 4 x 1 sheets 10 x 10 stamps per sheet.
 Size of stamp 30,22 x 23,9083 mm
 Printing press 841. Perforator Grover.
 Perforation gauge 13,8 x 14,1
 Harrison glossy paper, phosphorescent coated, PVA gum.
 Width of roll of paper used 340 mm.

This stamp has been reduced in size to allow for a wider perforation gutter. The cylinder block now appears in the top right hand corner of the sheet. The issuing date of the series (below the P.O. emblem) has changed from 1982-07-10 on the previous issue, to 1982-07-15 on this issue, and the printing date in black figures now appear above row 1 stamp 10. This issue is not a reprint but a new printing, a new cylinder was used.

There is a scratch right round the cylinder starting from row 1/4 on the A pane down to row 10/10 on the D pane.



Panes can be identified as follows:

Pane A: Perforated bottom. Hyphens in date below PT emblem 1982=07-15.

Dots near date below PT emblem 1982 = 07 - 15
 C2/2. 3C dot between 3 and C of 3C.

Pane B: Imperforated bottom margin. Hyphens in date below PT emblem 1982-07=15.

C2/1. Dot below A of A H Barrett.
 C1/2. Dot in C of 3C.

Pane C: Perforated bottom margin. Hyphens in date below PT emblem 1982=07-15.

T.M. Small line below 3 of 3,00.
 C1/1. Right top corner of design a spot 0,75 mm to right of tree.

Pane D: Imperforated bottom margin. Hyphens in date below PT emblem 1982-07=15.

C1/2. Line extending from top of C of 3C.
 C1/1. Line through R of RSA.

RSA

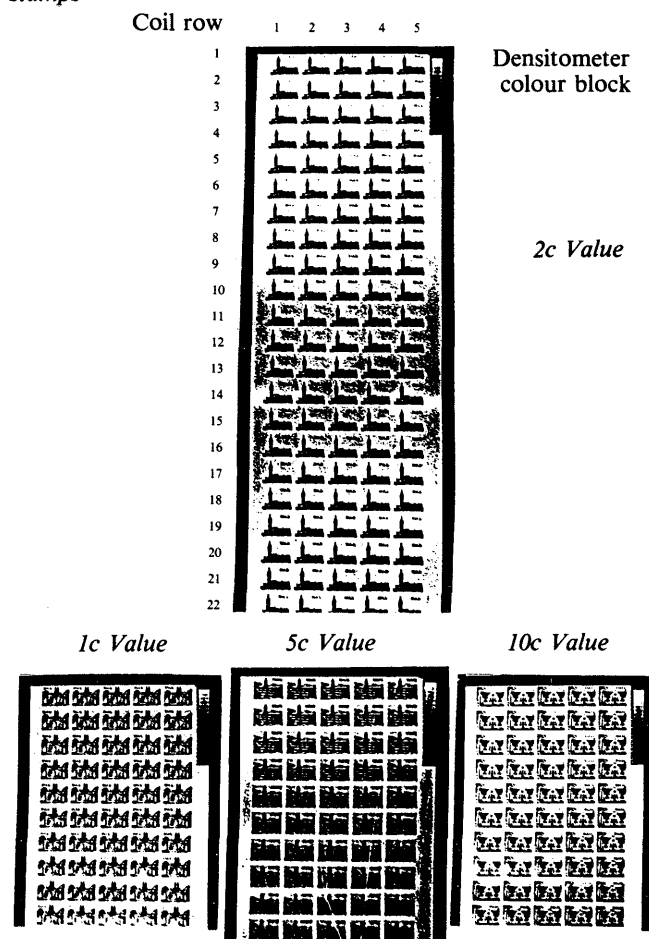
Building series roll stamps

by M J H Tonking and G J de Swardt

THE present issue of the RSA Building series roll stamps were described in the June 1983 number of the South African Philatelist. Recently confirmation was obtained that the position of the multipositive join occurs in line with the top of the densitometer colour block found in the right hand margin of the uncut sheets. This applies to all four values. The correct stamp row numbers can now be allocated as shown on the photograph of the 2c multipositive. For the sake of clarity the correct numbering of the stamp rows compared with the original arbitrary numbering is shown below.

Original row	Correct row	Original row	Correct row
1	4	13	16
2	5	14	17
3	6	15	18
4	7	16	19
5	8	17	20
6	9	18	21
7	10	19	22
8	11	20	1
9	12	21	2
10	13	22	3
11	14		
12	15		

Photographs of the four Multipositives used for the roll stamps



SWA

Special issue — Indigenous traditional musical instruments

(1985-10-17)

by M J H Tonking

Technical data

Job number: 7077171

Value	Date of printing	Number of sheets ordered
12c	30.7.85	100 000
25c	29.7.85	40 000
30c	26.7.85	40 000
50c	25.7.85	40 000

Master negative and multi negative lithography: New

Lithographic plates:	12c	25c	30c	50c
Tricolour blue	878	882	886	890
Tricolour yellow	879	883	887	891
Warm red	880	884	888	892
Black	881	885	889	893

Plate layout: 3 x 2 sheets each of 5 x 2 stamps sized 38,07 x 28,70 mm

Printing press: Heidelberg Speedmaster number 784

Perforator: Walter Kroll 14,0 x 14,25

Paper: Litho Chromo Papers Ltd mat surface non phosphor-coated.

Gum: PVA Paper sheet size: 295 x 630 mm

Pane layout: A B
C D
E F

The panes may be identified as follows:

12c

- Pane A:** TM — Break in top right side of PT emblem frame at 2 o'clock.
C2/1 — Blue dot 1 mm below '4' in D1.4.
- Pane B:** SM — Small black dot 0,5 mm diagonally above top left corner of black 881 colour block.
- Pane C:** C1/1 — Black dot just above top frame to right of 'A' of SWA.
SM — White smudge on left bottom circle of '8' in 881 black colour block.
- Pane D:** C2/2 — Small black dot 1,5 mm to left of 'D' in D1.4.
- Pane E:** Row 4/2 — Small white triangular shaped flaw in bottom left corner of stamp 3 mm above 'n' of Van.
- Pane F:** C1/2 — Small black dot 1 mm above top right of stamp frame 3 mm from top right corner.

25c

- Pane A:** C1/2 — Short black line 5 mm above 'c' of 5c.
- Pane B:** SM — Nick in bottom of 885 black colour block in line with first '8' of 885
TM — Nick in bottom of gembok's right horn in PT emblem.
- Pane C:** SM — Blue dot 2 mm below bottom left corner of 884 red colour block.
- Pane D:** Row 3/2 — Short vertical black line 7,5 mm above '5' of 25c.
- Pane E:** SM — White dot near bottom 884 red colour block. 884
- Pane F:** SM — Black dot immediately above top right corner of 885 black colour block.

30c

- Pane A:** SM — White dot in top left corner of 886 blue colour block.
- Pane B:** Row 5/2 — Black dot in bottom of stamp 1,5 mm above second 'u' in Okambulumbumba.
- Pane C:** C2/2 — Black dot in bottom of 'c' in 30c.
Row 4/2 — Short blue line in bottom right side of '3' in 30c.
- Pane D:** SM — Sloping white line below first '8' in 889 black colour block. 889
- Pane E:** Row 5/2 — Red dot above top stamp frame 2,5 mm above 'A' in SWA.
- Pane F:** Row 3/2 — Three black dots above 'a' in Okambulumbumba.

50c

- Pane A:** SM — White dot in bottom right corner of 890 blue colour block.
- Pane B:** Small black dot in top perforation gutter 11 mm from top left corner.
- Pane C:** Row 5/1 — Short black line near right stamp frame 10 mm above 'c' of 50c.
- Pane D:** Row 4/2 — Black dot in right margin 7 mm from right frame and 16 mm above bottom frame.
- Pane E:** Cannot identify.
- Pane F:** C1/1 — Small red dot in right perforation gutter 2 mm from right frame and 12,5 mm above bottom right corner.

RSA

**Special stamp issue —
Cultural heritage**
(Cape Silver — 1985-11-05)
by M J H Tonking

The four values depicting Old Cape Silver are designed by Hein Botha.

Technical data

Job number: 7077272
Date of printing: 12c 15.8.85
25c 12.8.85
30c 8.8.85
50c 1.8.85
Number of sheets ordered: 12c 500 000
25c 30c and 50c 70 000
Master negative and multi negative lithography: New

Lithographic plates	12c	25c	30c	50c
Tricolour blue	1714	1709	1704	1699
Tricolour yellow	1715	1710	1705	1700
Tricolour red	1716	1711	1706	1701
Silver	1717	1712	1707	1702
Black	1718	1713	1708	1703

Plate layout: 3 x 1 sheets each of 5 x 5 stamps sized 38,07 x 28,70

Printing press: Heidelberg Speedmaster number 784.

Perforator: Bickel 14,00 x 14,25

Paper: Harrisons mat surface phosphor-coated.

Gum: PVA Paper sheet size: 295 x 630 mm

The panes may be identified as follows:

Pane layout: A B C D

12c

- Pane A:** Row 3/3 — Short black line above top frame 7 mm from top left corner.
- Pane B:** SM — White dot above and between '1' and '6' in 1699 blue colour block.
- Pane C:** Row 5/5 — Red mark 1 mm above top left of silver bowl.
Row 1/3 — Small projection on right side of '1' in 1,80 1 mm above bottom of '1'.

25c

- Pane A:** Row 3/4 — Blue dot immediately outside right frame 10 mm below top right corner.
- Pane B:** SM — White dot above '7' in 1704 blue colour block.
- Pane C:** SM — Blue dot 1 mm to right of 1708 black colour block.

30c

- Pane A:** TM — Small nick in bottom of '5' in 05 of date.
- Pane B:** C1/1 — Blue dot 2 mm below 'A' of Botha (maybe perforated out)
Row 5/1 — Faint red line 4 mm away from and diagonally opposite bottom left corner of stamp.
- Pane C:** SM — Two red dots immediately above top of red 1711 colour block in line with first '1'.
C1/2 — Red dot to top right of '4' in D3.4.

50c

- Pane A:** C1/2 — White dot immediately in front of jug's spout.
- Pane B:** C1/1 — Blue mark 2 mm below 'A' of Botha (maybe perforated out)
Row 2/3 — Red dot 8 mm below top left corner of stamp and just outside frame line.
- Pane C:** C1/1 — Silver dot 5 mm above and to right of 'C' in 50C.

SWA

Third definitive reprints

(Issue date: 1985-06-11 on pane)

by M J H Tonking

Value	Reprint number	Date of printing	Number of sheets ordered
1c	3rd	25.6.85	33 000
5c	2nd	28.6.85	23 000
20c	1st	10.7.85	19 000
25c	2nd	3.7.85	23 000
25c	1st	11.7.85	23 000

Master negative and multi negative lithography: standing.

Lithographic plates: New	1c	5c	8c	20c	25c
Tricolour blue	858	862	866	870	875
Tricolour red	860	864	868	872	876
Black	861	865	869	873	877

Plate layout: 1 x 4 sheets each of 5 x 5 stamps sized 23,90 x 40,50 mm

Printing press: 758

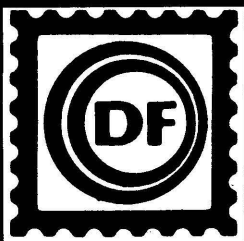
Perforator: Walter Kroll 14,25 x 14

Paper: Litho Chromo Papers Ltd. matt surface non phosphor coated.

Gum: PVA Paper sheet size: 630 x 295 mm

The individual panes of each value may be identified as follows:

Pane layout:
1c and 5c A B C D
8c, 20c and 25c: A
B
C
D



AUTUMN AUCTIONS



*A group of superb rarities from the Melat Commonwealth auction,
New York, November 20-24, 1985*

ZURICH:

**Public Auction 39 — 4-9 November 1985
at the International Hotel, Zurich-Oerlikon**

Featuring many award winning collections — EUROPE with Greece (Maximus final part), Switzerland, Portugal, France, Alsace-Lorraine, Germany and Colonies, Italy and States, Scandinavia with good Sweden and Norway; LATIN AMERICA with classic Peru, Venezuela, Argentina; FAR EAST with the Tolman Mongolia, classic Korea; Airmails, Collections and mixed lots, etc.

NEW YORK:

**Public Auction 40 — 20-24 November 1985
at the Collectors Club, 22 East 35th Street, New York City**

Featuring comprehensive GB and Commonwealth including the Melat collection: over 10 million Pound Sterling cat. value; US \$ 1 million plus estimate value USA postal history and stamps, with dealer lots; Central America; Middle East with Grand Prix Palestine, South Arabia, Israel, etc.

GENEVA:

**Mail Auction 5 —
29 November 1985**

Featuring All World with important section Olympic Games.

Catalogues on request each SFrs 10/US\$5/£4 (airmail SFrs 20/US\$10/£8) at the address below.

For USA, Central + South America, catalogues are available from

**DAVID FELDMAN (USA) INC.,
131 Varick Street, New York, NY 10013, USA
Telex: 42 18 61, Telephone: (212) 691 72 48**

DAVID FELDMAN S.A.

CASE POSTALE 81, 1213 ONEX, GENEVA, SWITZERLAND
Telephone: Geneva 022/57 25 30
Telex: 422 757 DFSA

1c

- Pane A:** TM — Break in top right side of PT emblem frame opposite 'T' of PT. Row 6/1 — Two dots 1 mm below '1' in bottom margin.
- Pane B:** SM — White dot 1 mm below and opposite '5' and '8' in 858 blue colour block
TM — Vertical blue line to left of '0' of 0,25.
- Pane C:** C1/2 — Red dot in top of 'c' of 1c.
- Pane D:** C1/2 — Two small black dots immediately below 'B' of Bosman.
Row 5/1 — Blue dot below bottom left of '0' in ,01 in left margin.

5c

- Pane A:** SM — Black dot in top right of '8' in 865 black colour block.
C2/2 — Blue smudge to left of 'B' in Bosman.
- Pane B:** TM — White smudge on lower part of '7' in 0,75.
- Pane C:** TM — Small projection on right side of PT emblem opposite 'A' of SWA.
- Pane D:** TM — Black dot opposite gemsbok's right ear in PT emblem.
Row 5/1 — Short blue line 3 mm to left of '1' in bottom margin.

8c

- Pane A:** SM — Blue projection on right side of 866 blue colour block. 866
TM — Short blue line 2 mm below and to right of '0' in 1,60.
- Pane B:** Row 5/1 — Red dot 1 mm below '8' in ,08 in side margin.
Row 3/4 — Red dot in bottom perforation gutter 5 mm to left of 'P' in Paul.
- Pane C:** TM — Short blue line 2,5 mm below and to left of '2' in 2,00.
Row 3/1 — White flaw in '2' of ,24 in left margin.
- Pane D:** SM — Red dot in left lower circle of second '8' in 868 red colour block.
C2/1 — Short sloping black line in top perforation gutter above 'W' of SWA.

20c

- Pane A:** SM — Black dot in top left circle of '8' in 873 black colour block.
- Pane B:** TM — Black dot between two '00' in 5,00. 00
- Pane C:** TM — Nick in left horn as well as break in left frame opposite bottom of horn in PT emblem.
- Pane D:** TM — Black dot below right end of second hyphen in date.

25c

- Pane A:** SM — Black dot in top cross arm of second '7' in 877 black colour block.
- Pane B:** TM — White smudge on top of second '1' in 1985-06-11.
Row 2/1 — Three blue dots above comma in 1,00 in left margin.
- Pane C:** C2/2 — Black dot immediately to left and below '1' of 1980.
Row 4/1 — Blue dot above 'o' in ,50 in left margin.
- Pane D:** SM — White mark in bottom right corner of 877 black colour block.
Black dot in top right corner of 876 red colour block and short black line crossing bottom right corner of 876 red colour block.

VENDA**Special issue — Ferns**

(1985-09-05)
(Ref. Bulletin 25)

by M J H Tonking

The four stamps depicting ferns are designed by Dick Findlay.

Technical data

Job number: 7034145

Value	Expected date of printing	Number of sheets ordered			
12c	19.7.85	40	000		
25c	18.7.85	25	500		
30c	17.7.85	25	500		
50c	17.7.85	25	500		
Master negative and multi-negative lithography: New					
Lithographic plates:	12c	25c	30c	50c	
Tricolour blue	520	525	530	535	
Tricolour yellow	521	526	531	536	

Tricolour red	522	527	532	537
Gold	523	528	533	538
Black	524	529	534	539

Plate layout: 2 x 4 sheets each of 2 x 5 stamps sized 23,90 x 40,50 mm

Printing press: Heidelberg Speedmaster number 784

Perforator: bickel 14,25 x 14,00

Paper: Litho Chromo Papers Ltd. mat surface non phosphor-coated.

Gum: PVA Paper sheet size: 630 x 295 mm

The panes may be identified as follows:

Pane layout:

A	B	C	D
E	F	G	H

12c

- Pane A:** TM — Black dot below '9' of 1985.
- Pane B:** TM — Black dot below '8' of 1985.
- Pane C:** C1/2 — Top right frame of stamp smudged.
- Pane D:** C1/1 — White dot in top of 'D' in VENDA.
- Pane E:** SM — Blue dot 1 mm outside top left corner of 52 yellow colour block.
- Pane F:** Row 2/1 — Small red dot 1 mm below 'N' of VENDA.
- Pane G:** SM — Gold dot in bottom of '2' in 523 gold colour block.
- Pane H:** C2/2 — Black dot below leaf and 8,5 mm below '1' of 12c.

25c

- Pane A:** Row 1/2 — White dot in centre of 'V' in VENDA.
- Pane B:** C1/2 — White projection on top left of 'D' in VENDA.
- Pane C:** SM — Black dot in right of crossarm of '5' in 527 red colour block.
- Pane D:** C1/1 — White dot in top of 'V' in VENDA.
- Pane E:** SM — Red dot immediately outside top right corner of 527 red colour block.
- Pane F:** SM — Blue dot in top right side of crossarm of '5' in 525 blue colour block.
- Pane G:** SM — Red dot 3 mm above top left corner of 529 black colour block.
- Pane H:** SM — Red dot immediately below bottom left corner of 527 red colour block.

30c

- Pane A:** C1/2 — White dot in front of 'D' in VENDA.
- Pane B:** C2/2 — Red dot 7 mm below top right corner of frame — just outside frame
- Pane C:** Row 1/1 — Blue and red dots 4 mm below second 'a' of Adiantum.
- Pane D:** T, — Projection on bottom of '8' in 1985.
- Pane E:** Blue mark just to left of 531 yellow colour block.
- Pane F:** SM — Black dot 0,5 mm below 534 black colour block in line with '4'.
- Pane G:** TM — Black mark on '1' in 1985.
- Pane H:** TM — Small black 'moon' 8 mm to left and above '1' in 1985.

50c

- Pane A:** SM — Red dot in top of '7' in 537 red colour block.
- Pane B:** C2/2 — Red dot adjacent to and outside right frame 8 mm below top right corner.
- Pane C:** SM — Blue dot in bottom of '5' in 535 blue colour block.
- Pane D:** TM — Black dot immediately above top right corner of PT emblem.
- Pane E:** TM — Black dot in centre of elephant's trunk in PT emblem.
- Pane F:** SM — Black dot below '7' in 537 red colour block.
- Pane G:** C2/2 — White dot between 'D' and 'A' in VENDA.
- Pane H:** SM — Black dot just to left of 539 black colour block in line with centre of '5'.

BOPHUTHATSWANA**Second definitive series**

(Industries — 1985-10-25)

by M J H Tonking

Value	Job number	Date of printing	Technical data	
			Date of printing	Number of sheets ordered
1c	7095957	24.4.85		28 500
2c	7097472	1.5.85		28 500
3c	7097674	29.4.85		29 500

4c	7096765	2.5.85	27 500
5c	7095351	3.5.85	27 500
6c	7095149	7.5.85	27 000
7c	7097371	28.5.85	27 000
8c	7096361	29.5.85	29 500
9c	7098280	3.6.85	27 000
10c	7097573	30.5.85	28 500
15c	7097270	12.6.85	28 500
20c	7098078	14.6.85	28 500
25c	7096159	11.6.85	27 500
30c	7095755	17.6.85	27 500
50c	7095553	19.6.85	27 500
R1	7096563	20.6.85	27 000
R2	7097876	18.6.85	26 600

Master negative and multi negative lithography: New

Lithographic plates

Value	Tricolour	Tricolour	Tricolour	Black
	Blue	Yellow	Red	
1c	658	659	660	661
2c	662	663	664	665
3c	666	667	668	669
4c	670	671	672	673
5c	674	675	676	677
6c	678	679	680	681
7c	682	683	684	685
8c	686	687	688	689
9c	690	691	692	693
10c	694	695	696	697
15c	698	699	700	701
20c	702	703	704	705
25c	706	707	708	709
30c	710	711	712	713
50c	714	715	716	717
R1	718	719	720	721
R2	722	723	724	725

Plate layout: 3 x 1 sheets each of 5 x 5 stamps sized 38,07 x 28.70 mm

Printing press: Heidelberg Speedmaster number 784

Perforator: Walter Kroll 14,00 x 14,25 except 7c, 9c, 15c, 30c, R1. Bickel 14,00 x 14,25

Paper: Litho Chromo Papers Ltd. mat surface non phosphor-coated.

Gum: PVA Paper sheet size: 295 x 630 mm

Pane layout: A
B
C

The panes may be identified as follows:

1c

Pane A: SM — Nick in bottom of 661 black colour block below second '6' of 661. 661

C1/1 — Blue dot in front of '1' of 1c.

Pane B: SM — Black dot in lower circle of '6' in 661 black colour block.

C2/1 — Red dot 0,5 mm below '1' of 1c.

Pane C: C2/2 — Tiny red dot above 'U' in BOPHUTHATSWANA.

2c

Pane A: TM — Black dot 1 mm above comma between '0' and '0,30.'

Pane B: SM — White dot between top of second '6' and '2' in blue 662 colour block.

Pane C: SM — Tiny blue dot 0,5 mm below bottom right corner of 662 blue colour block.

3c

Pane A: Row 4/4 — Black dot above 'c' of 3c.

Pane B: Row 1/1 — Blue dot in top perforation gutter 2 mm from top right corner of stamp.

Pane C: TM — Blue dot 3 mm to left of '0' in '0,15'.

4c

Pane A: TM — Black dot 1 mm above '1' of '1,00'.

Pane B: SM — Black dot adjacent bottom of black 673 colour block in line with '7'. 673

Pane C: TM — Small blue dot 2 mm to left of '0' in '0,60'.
Two small blue dots 1 mm above '6' of '0,60'.

5c

Pane A: Row 1/3 — Blue dot to right of 'c' in '5c'.

Pane B: SM — White dot between '7' and '4' in 674 blue colour block. 674

TM — Blue dot immediately to right of '1' in '1,00'.

Pane C: SM — Red dot below bottom left corner of 677 black colour block 1,5 mm from corner.

Row 2/1 — Blue dot 4 mm to left of comma in ',20', in left side margin.

6c

Pane A: SM — Black dot 1 mm away from and diagonally opposite top right corner of 680 red colour block. 680

Row 5/4 — Blue dot 11 mm below '4' in bottom margin.

Pane B: SM — Blue dot below bottom right corner of 678 blue colour block and 1 mm from corner.

C1/2 — Blue dot in top perforation gutter 11 mm from top left corner.

Pane C: Row 1/2 — Blue dot between second 'A' and 'N' in BOPHUTHATSWANA.

7c

Pane A: TM — Red dot 10 mm to right of top of '1' in '1,75'.

Row 2/1 — Blue line 4 mm above '2' of ',28' in left margin.

Pane B: SM — White dot above '2' in 682 blue colour block.

TM — Blue dot 1 mm to left of leopard's left leg.

Pane C: Row 1/1 — Blue dot immediately to left of centre of '3' in '0,35' in top margin.

Row 5/4 — Short black line in top perforation gutter 4 mm from top left corner

8c

Pane A: SM — Red dot 1 mm below and 1,5 mm from bottom right corner of 689 black colour block.

TM — Red dot 1 mm above '0' of '10' in date.

Pane B: SM — White dot 1 mm above '8' in 686 blue colour block.

Row 1/3 — Blue dot 1,5 mm above stamp in top perforation gutter and 16,5 mm from top left corner.

Pane C: SM — Black dot below '6' in 687 yellow colour block.

TM — Blue dot 0,5 mm above '9' in 1985.

9c

Pane A: TM — Black mark behind leopard's tail.

TM — Two white lines through '1' in 1985.

Pane B: TM — Red dot 0,5 mm above '0' on '10' in date.

— Black

Pane C: C2/1 — White dot in top of 'N' of BOPHUTHATSWANA.
Row 1/2 — Red dot 3 mm diagonally below and to right of '0' in '0,90' in top margin.

10c

Pane A: TM — Black dot midway between leopard and '2' in '2,00'.

SM — Black dot 5 mm below 694 blue colour block and in line with '6'.

Pane B: SM — White dot above and between '9' and '4' in 694 blue colour block.

— Black dot in left top circle of '9' in 696 red colour block.

Pane C: TM — Blue dot 4 mm above first hyphen in date.

SM — Two blue dots 1 mm from right side of 695 yellow colour block.

15c

Pane A: Black dot 1,5 mm diagonally below and to left of '3' in '3,75'.

Pane B: SM — White dot 0,5 mm above and to left of '8' in 698 blue colour block.

20c

Pane A: SM — Small red dot 1 mm below 704 red colour block in line with '4'.

TM — Black dot in centre of second '0' in 4,00.

Pane B: SM — Blue dot in bottom of '0' in 702 blue colour block.

Row 5/5 — Blue dot 1 mm below 'W' of BOPHUTHATSWANA.

Pane C: C2/2 — Black smudge above top frame 15 mm from top left corner.

Row 4/1 — Black dot immediately adjacent top side of '4' in ,40 in left margin.

25c

Pane A: Cannot identify.

Pane B: SM — White dot above '6' in 706 blue colour block.

Pane C: Row 1/2 — Blue mark below chin of man on left side of stamp.

30c

Pane A: Cannot identify.

Pane B: C1/2 — Black dot 1 mm below second 'H' in BOPHUTHATSWANA.

Pane C: SM — White dot under '3' in 713 black colour block.

50c

Pane A: Row 5/1 — Tiny black dot in centre of '0' of 50c.

Pane B: SM — White dot between top of '1' and '4' in 714 black colour block.

Pane C: TM — Black dot 0,5 mm below '2' in 12,50.
Row 4/1 — Black dot immediately to right of 'c' in 50c.

R1

Pane A: TM — Bottom right side of '5' in 25 of date missing.

Pane B: Cannot identify.

Pane C: SM — Tiny red dot above top frame of 720 red colour block 1,5 mm from top left corner.

R2

Pane A: Row 4/5 — Red dot above 'B' of BOPHUTHATSWANA.

Pane B: SM — White dot above and between 22 of 722 blue colour block.

Row 4/4 — Red dot to right of '2' in R2.

Pane C: C1/2 — Break on top of 'O' in BOPHUTHATSWANA.

SM — Red dot in top curve of '2' in 723 yellow colour block.

SWA

Stamp Booklets

by M J H Tonking

FOR THE first time since the German Administration of South West Africa postage stamp booklets have been issued by the Post Office. Seventy five thousand numbered booklets will be made available — each containing ten 12c stamps and sold at a face value of R1,20 per booklet.

Each booklet contains two rows of five stamps affixed to the cover by the left hand selvage and folded concertina-wise between the covers. The stamp used is the recently issued 12c additional definitive value depicting the buffalo.

In order to produce booklet panes every third row of the original sheet panes was blanked out leaving all other details as previously recorded. (See diagram).

Of the total 150 000 booklet panes printed, 75 000 have plate numbers on the right margin (Panels A,C,E,G) and 75 000 have sheet row numbers on the bottom margin (Panels B,D,F,H). Only the latter have been issued in the first instance.

Details of booklet covers

The cover measures 125 x 74 mm and was printed by an outside contractor. The front of the cover depicts the head of the buffalo with the following printed in white on the top right corner:

Inhoud Contents Inhalt
10 x 12c
R1,20 (in black)

A serial number printed in black appears in the bottom right corner. In the bottom left corner is printed:

S W A
Seël Boekie
Stamp Booklet
Markenheffechen

Inside the front cover is an Old Mutual advertisement in Afrikaans and English 'Praat van geld' 'Let's talk money'.

Inside the back cover is an advertisement for Philatelic Walter A.G. of Zurich in German and English while the back cover advertises the SWA hotel Maltahöhe Pty in both German and English.

Technical details

Job number: 7399765.
Expected date of printing: 20.2.85
Number of sheets ordered: 150 000
Master negative and multi negative new (Lithography)

Cape triangulars — Cape triangulars were popular at a Warwick & Warwick auction in Birmingham in July. A 1863-64 De la Rue 1d deep carmine mint marginal block of eight sold for £600, and a mint pair of the 1855-58 1/- deep dark green realised £200.

Exchange wanted — A Finnish collector of Southern Africa stamps would like to correspond and offers Finnish and Aland stamps in exchange. He is K V Saaksjarvi, Katajakatu 4E 16, 53810 Lappeenranta, Finland.

Lithographic plates: 830 Tricolour blue, 831 Tricolour yellow, 832 Tricolour red, 833 Black.

Plate layout: 8 x 1 sheets each of 2 x 5t stamps sized 40,50 x 23,90 mm

Printing press: Heidelberg Speedmaster number 784

Perforator: Bickel 14 x 14,5


Paper Harrison mat non phosphor-coated. Gum: PVA

Paper sheet size: 610 x 295 mm

Pane layout: A
B
C
D
E
F
G
H


Booklet pane identification

Pane A: T.M. faint red line 10 mm above buffalo's left horn stamp 1/5

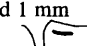
Row 1/2 — White flaw in curve of right horn. 

Pane B: Row 2/4 — Red dot above 'w' in Nowers.

Pane C: Row 2/1 — Blue dot 2,5 mm below '1' in 12c.

Pane D: Row 1/1 — Red dot below right horn and above ear. 

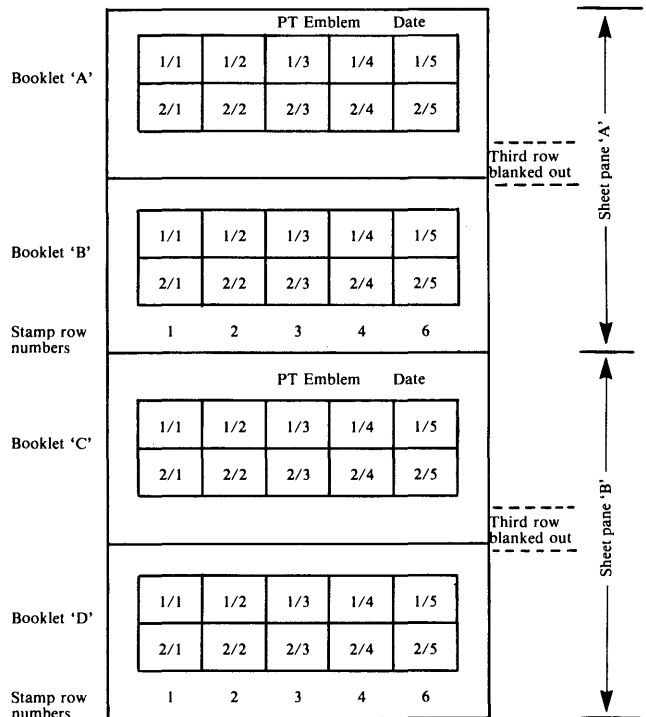
Pane E: Row 1/5 — Black dot 0,5 mm below first 'f' in Caffer.

Pane F: Row 2/1 — Short horizontal red line under belly and 1 mm behind front leg. 

Pane G: S.M. — White dots above first 3 and behind second 3 in 833 black colour block. **[8 3 3]**

Pane H: Row 1/1 — White flaw 0,5 mm in front of buffalo's neck.
Row 2/5 — Red dot in bottom margin 5 mm below '5' in bottom margin.

Layout of the first four booklet panes in relation to original sheet pane layout.



Exchange wanted — J Fabian Garcia, 3272 Villa Mantero, Prov E. Rios, Argentina, offers modern Argentine stamps from 1978 in exchange for Southern African.

Stanley Gibbons Publications — Gibbons has appointed a new wholesale agent in South Africa for its range of albums, catalogues and accessories: D I Dodds Enterprises, Franschoek, 33 Hill Street, Ferndale (PO Box 1896, Randburg 2125), Tel (011) 787-5411.



Elpex/Olfu 85

THIS YEAR'S national stamp exhibition, Elpex/Olfu 85, held in East London from 6 to 10 August 1985, will be remembered for the extraordinary efficiencies of planning and organisation which made it hum like clockwork.

It is rated as the most efficiently organised major philatelic event (exhibition, philatelic congress and concurrent activities) yet staged in Southern Africa.

The people of the Eastern Cape have reason to be proud of the manpower and the womanpower in the East London Philatelic Society's organising committee which made the philatelic week of the year such a splendid success. Organising chairman was John Morris, who worked with the methodology of an engineer, and with him and other stalwart helpers were the ladies, not only as award-winning philatelists but as forces to be reckoned with.

Congress delegates, exhibitors and exhibition viewers who came from Zimbabwe, SWA and all over enjoyed a magnificent show, extremely well lit thanks to specially suspended lighting, fruitful meetings, delightful outings and the spirit of friendship and camaraderie in a series of social events.

With many exhibitors aiming to qualify at silver-gilt standard for next year's Johannesburg 100 international stamp exhibition, the exhibition standard was high. The standard of organising was yet higher.

In our last issue (September) we reported on the proceedings of the philatelic congress, and in this issue we list the Elpex/Olfu exhibition awards.

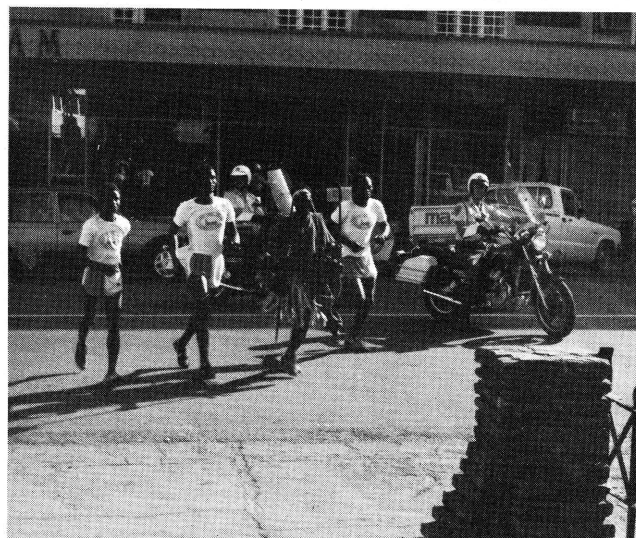
Ten years ago history was made at the then national stamp exhibition in East London when the first souvenir sheet showing official stamp essays was issued by the Philatelic Foundation.

This year history was again made when the special exhibition item, a postal runner cover, received the official sanction of formal backstamping (see the announcement made in our September issue, p 220).

A special exhibition mail was arranged in the form of a runner post from Mdantsane in Ciskei to the East London City Hall. Early on the morning of Tuesday 6 August 1985 mail runner Edward Khangelani, dressed in 1880s garb, and three

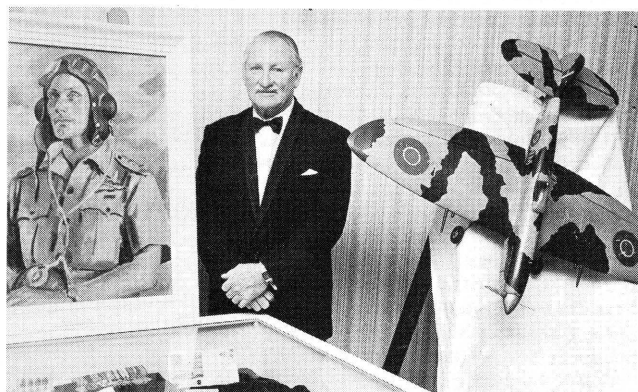


This is the postal runner envelope which left Mdantsane in Ciskei early on 6 August 1985 and which was backstamped at East London at 10h00 on the same morning.



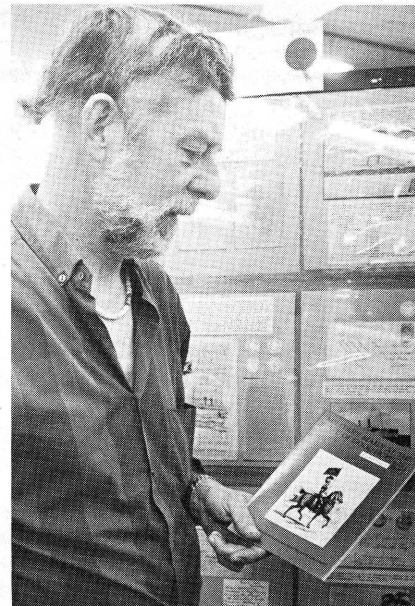
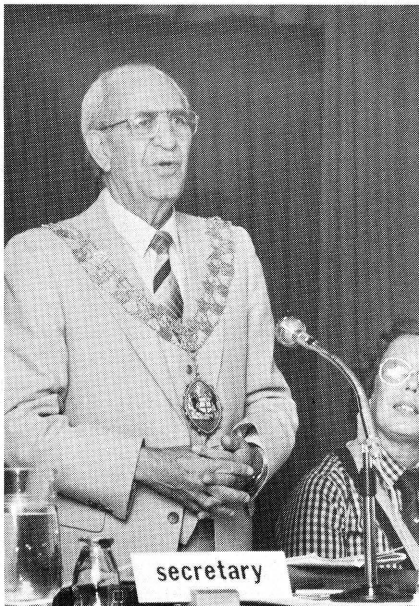
Here they are — postal runners from Ciskei arrive with motorcycle escorts at the East London City Hall.

At the Elpex banquet: Cmdt Bob Kershaw at the special exhibit to honour the airman on South Africa's War Effort stamps. Photo: Daily Dispatch.



Mr Marais Steyn opening the Elpex/Olfu national stamp exhibition on the steps of the East London City Hall. Behind him, left, is John Morris, and to the right Mr J F Venter, Postmaster General of Ciskei, and Mrs Venter, and the postal runners, with Edward Khangelani in the postal runner attire of a century ago.





Left: The philatelic congress was opened by Councillor Joe Yazbek, Mayor of East London — who was also mayor at the time of the previous philatelic congress in East London in 1976. Looking on is Miss Mary Bromfield, President of the Federation. Centre: Die mooi goedjies by die uitstalling word bekyk deur 'n connoisseur, Sy Edele Marais Steyn, die Suid-Afrikaanse Ambassadeur in Transkei. Right: Wilhelm Grütter van Kaapstad het die FAK-trofee vir die beste Afrikaanse beskrywing ontvang vir sy versameling van Kaapse seeposttempels (agtergrond). Terselfdertyd het hy namens Reijger-uitgewers 'n nuwe boekie oor Kaapse militêre pos bekend gestel.

colleagues set off from Mdantsane with 1 000 covers in a historic mail pouch.

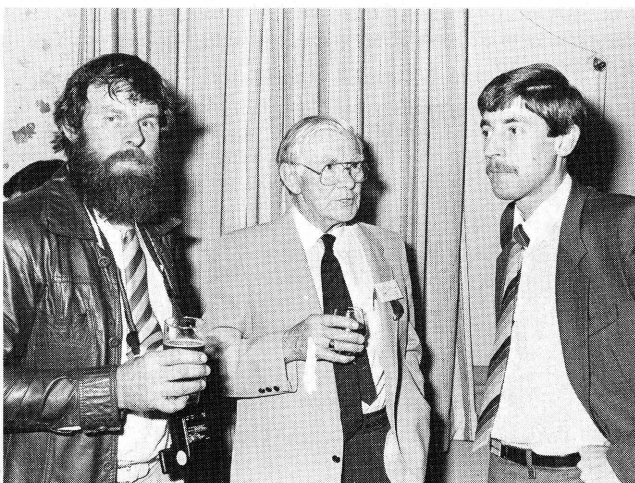
They arrived at the City Hall shortly before 10h00 and handed one cover on a cleft stick to Ciskei Postmaster General J F Venter. Mr Herman Steyn, director of Philatelic Services, took the cover, backstamped it with an East London postmark time slugged for 10h00, and handed it to the Hon Marais Steyn, South African Ambassador to Transkei, who declared the exhibition open.

The other 999 runner mail covers were then also backstamped, proving their mail runner conveyance.

Elpex organising chairman John Morris advises that strict security was applied in respect of the runner covers. The two 'examples' on display at the exhibition counter were torn up after the show and the printer's file copy was destroyed.

Of the 1 000 covers, only 75 are left and these are still available from Elpex, PO Box 925, East London 5200, at R5,80 each (inclusive of postage and packing).

At the exhibition in East London were Mr Dave McWilliams and Mr Dave Williams, two of the Elpex organisers, and Mr Mike Koyd of Port Elizabeth.



Highlight of the Elpex awards banquet was the address by Cmdt Bob Kershaw, the East London pilot on the 1½d War Effort stamp. On display at the event were the stamps, the wartime portrait of Kershaw painted by Neville Lewis, medals and citations, war photographs and a model Spitfire.

For East London the national philatelic event was a solid success story . . . yet touched with grief about the decease of Terrence Radue, and later Frank Drusinsky, two of South Africa's leading stamp men.

••• Elpex 85 awards

The Top Awards

The State President's Trophy/Staatspresidentstrofee (national grand prix)

H G Kollrepp, Cape of Good Hope postal history
Posmeestergeneraalskild/Postmaster General's Shield (best SA)
 L van de Kar, SA George V postal stationery

Spesiale toekennings

South African Stamp Study Circle Award (best SA post-1910)

E Muller, Early Unions
Potch 78-toekenning (beste, laaste 25 jaar)

H A Wooster, Cyprus post World War II

D G Crocker Cup (best postal history)

D Deighton, Maritime mail Bristol-London

FAK-trofee (beste Afrikaanse beskrywing)

W Grütter, Die Kaapse Seepostkantoor

C E D Enoch Trophy (philatelic research)

B M de Robeck, Nyasaland Field Force 1914-19

Robert Goldblatt Thematic Cup (best thematic)

Dr Hillel Faktor, Children in philately

Anglo-Boer War Philatelic Society Cup (beste Vryheidsoorlog)

Dr N J Zerbst, Gesensorde poststukke

El Al Trophy (best Israel or SA aerophilately)

D J Uys, South African airmails 1911-1940

Vrystaat-trofee (beste OVS)

J A Cheminais, OFS and ORC postage stamps

Stampcor Trophy (best SA pre-Union)

C & R Johnson, Cape of Good Hope eastern frontier

RSA Antarctic Philatelic Society Award

not awarded

East London Philatelic Society Award (best SA, juniors)

Michael Leeman, SA Bantam covers

Rose Mary Crocker Trophy (beste SWA)

F Snyman, German SWA

Michelson Trophy (best philatelic literature)

R C Knight & D A Mitchell, Postmarks, postal routes and principal postage rates of Southern Rhodesia to 1924

Royal Medallion (best Commonwealth)

R A F Winchester, Seychelles to 1902

AFV-eretoekenning (diskresie van die jurie)

Dr N J Zerbst, Korrespondensie van 'n Boere-egpaar

ZAR 100 Award (best foreign)

R Jeidel RDPSA, Liechtenstein

Rand 77 Award (discretion of the jury)

W Bloom, Pitcairn Islands 1870-1950

American Topical Association awards for thematics, Gold

Dr Hillel Faktor, Children in philately

ATA Silver

Mrs B Andersson, Stamps on stamps, with originals

ATA Bronze

I J Shapiro, Great Britain, Royal Household

FISA Award (best aerophilatelic)

D J Uys, South African airmails 1911-40

Rhodesia Award (best Rhodesian)

E J Howie, Victoria Falls

Stanley Gibbons Trophy (best classic)

D N Lyons, GB, First ten years of line-engraved stamps

Fanie Vermaak junior grand prix (beste junior)

Michael Leeman, SA Bantam covers

Fanie Vermaak Award, under 15 champion

Maxine White, Maxine's zoo

Elpex/Olfu 85 Trophy (discretion of the jury)

Rev P Garland, Tibet

East London City Award for "the Keilands"

Miss Jessie Vlavianos, Transkei forerunners

Gold awards

L van de Kar, South Africa George V postal stationery

E Muller, Early Unions

R Jeidel RDPSA, Liechtenstein

D Deighton, Maritime mail Bristol-London

Dr Hillel Faktor, Children in philately

Vergulde silwer-toekennings

C & R Johnson, Cape of Good Hope eastern frontier

B Illman, ZAR, Pietersburg issue of 1901

Dr N J Zerbst, Anglo-Boere-oorlog: gesensorde posstukke

L van de Kar, Union of SA 2 1/2 of 1910

S J Hagger RDPSA, Union of SA commemoratives

F Snyman, German SWA

W Göring, German SWA, Herero War 1904-07

Judge H J Berker, SWA occupation period, 1914-23

J Collie, Basutoland to 1933

Mrs J M Turban, From British Central Africa to Nyasaland

*J R Smith, British East Africa

R Jeidel RDPSA, Egypt

*B M de Robeck, Nyasaland Field Force 1914-19

E J Howie, Victoria Falls

R A F Winchester, Seychelles to 1902

J R Smith, Zanzibar

J W T Wannerton, Canada, 20th century Militia

D N Lyons, GB 1840-50, first 10 years of line-engraved

Mrs P McIntosh, Great Britain local posts

D Stern, Great Britain, Elizabethan errors

I J Shapiro, Great Britain, Royal Household

W Bloom, Pitcairn Islands 1870-1950

M J Nethersole, Trinidad 1824-1937

Rev P Garland, Tibet

Mrs Hilda Jeidel RDPSA, Belgian Congo airmail

D J Uys, South African airmails 1911-40

Mrs B Andersson, Stamps on stamps, with originals

H J G Kamffer, Unie van Suid-Afrika, Inkomsteseëls

G van der Walt, SA Spoorwegseëls en -koevert

Derek Watts, Wreck and crash mail

Jun: Michael Leeman, SA Bantam covers

**Met gelukwense van die jurie*

Silver awards

*J A Cheminain, OFS and ORC postage stamps

J A Cheminain, OFS and ORC Postal history

C E Holmberg, Transvaal Arms issues

P van Zeyl, Anglo-Boere-oorlog, krygsgevangenekampe in Ceylon, Indië en Bermuda

*J H G de Villiers, SA, Darmstadt trials

*J C Herselman, SA, Eerste rotogravure-drukke vanaf 1929

M J H Tonking, SA, Halfpenny stamps 1936-51

P Broes, SA, Second definitives used

J C Herselman, SA, Offisiële oordrukke

Mev J Poltéra, RSA

Dr R F Roos, RSA, Protea series

*C Raehs, SWA 1915-45

G Keding, SWA airmails

H zur Strassen, SWA postage dues

S Gutman, Basutoland and Lesotho

Dr H A Campbell, Stamps of Bechuana territories until 1932

K Seligman, Bechuanaland postmarks and postal history

A Leslie Leon RDPSA, Liberia 1860-1920

R Osborne, Mauritius postal stationery to 1953

H Smith, BSA Company 1892-1924

*C Cordes, Victoria Falls

R A F Winchester, Seychelles postal stationery XV-KEVII

"Libra", Australia, the BCOF issue

H C Berneaud, Ceylon, 1857-72 Pence issues

H A Wooster, Cyprus

*A M Raw, Isle of Man 1691-1942

M J Nethersole, India, Queen Victoria

Dr V B Reddi, India 1854-1946

R J 'T Hart, Malta

A Leslie Leon RDPSA, St Christopher, St Kitts-Nevis, Nevis

H C Berneaud, Hanover

Mrs A E Wanerton, Greece, Small Hermes Head

D Stern, Israel covers 1948-1952

Dr Hillel Faktor, Israel, artist's proofs

H A Wooster, Cyprus post World War II

L Hellmann, Philatelic terms illustrated

*C A L Myburgh, South African birdlife

Mrs B E Zarnack, Dance around the world

S W le Roux, Olimpiese posgeskiedenis 1894-1948

A J C Borgstein, The tank locomotive

Dr N J Zerbst, Korrespondensie van 'n Boere-egpaar

Mrs G E Colquhoun, Port Elizabeth 1853-1961

G van der Walt, Posgeskiedenis van Potchefstroom

*H J G Kamffer, Posgeskiedenis van Heilbron tot 1961

*N C Mewett, Fiscals and postal fiscals, BSA Co 1892 to Rhodesia 1980

M T Crawford, Wrecked, crashed, damaged and delayed mail

Jun: John White, Our alphabet of sport

*Jun: Maxine White, Maxine's zoo

Jun: Amanda Redmond, World architecture

*Jun: Elana Katz, The British Way

Jun: Gavin Isaacs, Great Britain QEII definitives

Jun: Diane Holmberg, RSA

**With felicitations of the jury*

Silwer-brons toekennings

H Klitzner, Anglo-Boer War

H Amooore, Official mail in South Africa

I O John, RSA changes, errors, flaws and varieties

J C Tucker, RSA steel plate printings

Mrs A E Wannerton, RSA postal markings

Mrs E A McGill, German SWEA Field Post 1904-07

H von Eisiedel, SWA first decimal issue

L Jacobson, SWA, underfranked mail

J Collie, Basutoland, KGV and QEII

Mrs T Buchholtz, Ciskei, pre- en post independence

R Osborne, Mauritius, registration markings and labels

N P Hartley, Northern Rhodesia

G Koefman, Rhodesia, postal history and postmarks

Miss Jessie Vlavianos, Transkei forerunners

B G Simpkins, Cayman Islands to 1946

D C Evans Jamaica

A J Katzeff, Israel, first definitives plate blocks

S Fanarof, Airmails of Switzerland

W Grütter, Speciale stempels en merke op Kaapstadse seepos

D R F Warren, Basutoland/Lesotho, QEII stamps and postal stationery

Mrs H Jeidel RDPSA, Towards the unification of Europe

Mrs B E Zarnack, Oil

V J Faris, Olympic Games

L Hellmann, Quotations from the Bible through stamps

Mrs J L Hutchinson, Rhodesia 1965-80

N C Combrink, Stained glass windows

Is this the first SA charity seal?

WAS THIS South Africa's first Christmas charity seal?

In *The SA Philatelist* of March 1983, p 78, Mr Stanley G Clark of Ramsgate, Kent, United Kingdom, sought information on a triangular sticker or label inscribed "Cape of Good Hope/Somerset Hospital/Christmas Greetings."

Mr Tom Lawson of Somerset West sought information from Mrs A Keyser, curatrix of the Cape Medical Museum, which is actually located at the Somerset Hospital in Green Point.

She found the following in the Somerset Hospital Annual Report for 1907:

We have also to gratefully acknowledge the valuable aid rendered by Mr Polhemus Lyon for introducing the Hospital

Christmas Stamp, by the sale of which a sum of £90 16s 4d was realised. The Board hopes that when the idea has become better known a substantial benefit will accrue to the Hospital Funds, and takes this opportunity of thanking all those who undertook the sale of the Stamp.

No reference to a Christmas stamp was made in the annual reports for 1908, 1909 and 1910.

This information suggests that the Somerset Hospital seal is the early forerunner of South Africa's Christmas Stamps. Next in line is the stamp issued in 1923 and inscribed "Bloemfontein" and "TB" with a 1d value tablet, as reported by Mr Eddie Beunderman in *The SA Philatelist* of August 1984, p 240.

LOW PRICES ON R.S.A. S.W.A. AND
HOMELANDS. SEND FOR FREE PRICE LIST.
WANT LISTS FOR COMMONWEALTH

WE BUY COLLECTIONS

This month's special offers:

1. R.S.A. FDC II WITH GROOTE SCHUUR CACHET R35,00
 2. R.S.A. FDC 3.13 SIGNED R15,00
 3. R.S.A. 3rd DEFINITIVE "FIRST DAY OF ISSUE CEREMONY" FOLDER. SIGNED R30,00
- SUBJECT STOCKS UNSOLD, ADD G.S.T. AND R1,00 POSTAGE

SANDTON STAMPS

SHOP L40 SANDTON CITY
P.O. Box 782564, Sandton 2146. Tel. (011) 783-8309

POSTAL HISTORY of THE WORLD

Enquiries invited from all collectors interested
in covers, postmarks, proofs, essays and
"Cinderella" material

WILLIAM R HART



"Westhope", Lyth Bank,
Bayston Hill
Shrewsbury,
SY3 OBE
England



BRITISH COMMONWEALTH

A fine stock of scarcer material of Great Britain and the Commonwealth up to 1935 is always available. Enquiries are welcome and they will receive prompt and personal attention. Arrangements can be made for payments in Rands or Sterling. Details will be supplied on request.

Also for the specialist:-
CAPE OF GOOD HOPE
Triangulars - Rectangles - Postmarks
Covers - Handstruck material

F W COLLINS
Stoborough Croft, St. Cross,
Winchester, England.

We stock all thematics
Birds — Animals — Butterflies — Insects —
Flowers — Transport — Marine Life

Please send us your want list.

INTERNATIONAL STAMP SALES

9 Old Arcade, 100 Market Street
Johannesburg
PO Box 23712
Joubert Park, 2040

SPECIALISTS IN STAMPS AND POSTAL HISTORY OF BRITISH COLONIES IN AFRICA PRIOR TO 1935



WE ALSO STOCK MODERN MATERIAL COVERING RHODESIA,
SOUTHERN AFRICA AND HOMELANDS

Send us your Want Lists and see what we can supply at competitive prices.

HENRY MAUERBERGER STAMP SALES (PTY.) LTD.

P.O. Box 386, Constantia 7848, Cape, Republic of South Africa.

D R F Warren, Scarce and unusual stamps on stamps
Mrs S A Nicholas, Winter relief in the Third Reich
J W T Wannerton, South Africa, company perfins
Jun: Maxine Katz, Nature's zoo
Jun: Diane Holmberg, Dogs
Jun: Lindsay Redmond, Transport by land, sea and air

Bronze awards

B G Simpkins, Walvis Bay
Dr M Peisach RDP, RSA automatic mail handling 1968-75
Prof A C Beck, Basutoland
B Fanarof, Former British colonies in Africa
C F Colyn, Posgeskiedenis van die Ciskei
N P Hartley, Northern Rhodesian postmarks
D J Gelfand, Rhodesian imprints, cylinders and varieties
Mrs J Redmond, GB, King George VI
R S Oliver, Guernsey, German occupation and after
G E Ponsford, New Zealand 1898-1909 pictorials
Mrs J M Osborne, Czechoslovakia to 1938
Prof A J E Sorgdrager, Serwië en Montenegro
C E Holmberg, Eagle issue of the USA
W Grütter, Die Kaapse Seepoortoor
J D Beacham, History of the aeroplane
M E Alke, Christmas greetings from Christkind and Austria
D McWilliams, Through the eve of a sea fish
Maj R A Webb, The long arm of the law
J W Hodgson, Nobel prizewinners 1901-1910
Mrs M Tucker, Historical figures in SA Methodism
G V Sulu, Development in telecommunications
Mrs L J Beddy, War

Sertifikaat van meriete

J E Franklin, Anglo-Boer War
A J Katzef, Rhodesia 1964-66 definitives
M J Sullivan, Tokelau Islands
S Fanarof, Liechtenstein airmails
Mrs Y M Cruickshanks, Captain Cook
Rabbi S A Zaiden, New Zealand Health stamps
Mrs A V Sulu, India, land of religion and culture
Dr W D Kotzé, RSA events since 1961
Prof A C Beck, The giraffe

Certificate of participation

C Plen, Bechuanaland and Botswana covers
C Plen, Basutoland and Lesotho covers

PHILATELIC LITERATURE

Silver-gilt award

R C Knight and **D A Mitchell**, The postmarks, postal routes and principal postage rates of Southern Rhodesia to 1924

Silwer (met gelukwense)

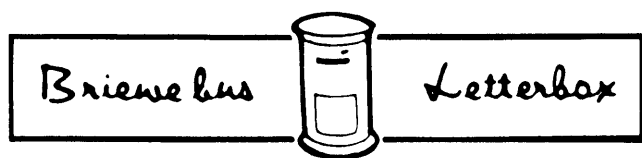
Windhoek-Filatelieklub, SWA 100 Handbook
W H Hoyte, North of the Zambesi (postal history and postmarks of Northern Rhodesia and Zambia)

Silwer award

K A Baker, The postal services of King William's Town and East London

Silver-bronze award

C Plen, The Aeroletter



No stamp for Rugby tour

DEAR SIR — Can you please tell me if New Zealand intends issuing a stamp to commemorate the forthcoming rugby tour of this country by the All Blacks!

— Sam Cowen, Johannesburg

No. — Ed

Masonry — an intriguing theme

DEAR SIR — The article on masonry by Eddie Howie in the April *SA Philatelist* touched off one of those curious chances by which philatelists seem to piece together apparently unrelated items into a coherent whole, and discover and establish the relevant facts. By such a chance I have been able to unearth full details of the photograph of the "Masonic Installation . . . under Arms . . ." through, of all things, the medium of golf.

At a golf function, being neither a golfer nor a mason (nor even a thematelist), I met a Mr Gordon Keay, who was neither a mason nor a philatelist, and in the course of the usual small-talk, which turned on our pioneer ancestry, he mentioned that his maternal grandfather had been involved in the Shona Rebellion of 1896, and that he had a photograph of him at a Masonic gathering, taken at the time. My mind turned, for no good reason, to the *SA Philatelist* I had recently read, and taking a wild flyer, I asked him to describe it, and to my amazement it seemed to correspond completely.

A subsequent meeting with Mr Keay brought to light an excellent full-size reproduction (21cm x 16cm) of the original photograph, which is in the National Archives, together with a sketch plan identifying every individual present.

The occasion was officially described as "RHODESIA LODGE NO. 2479 E.C./W.Bro. J. VAN PRAAGH — Worshipful Master.) Installation Meeting (under Arms during

Rhodesia Rebellion), 9th July 1896." and it is extracted from a booklet titled "The First 10 years of Rhodesia Lodge 1891-1901" published in 1940. I am grateful to Mr Keay for all his patience and trouble in providing me with this information and the photograph. I would be happy to let Mr Howie have a copy of the photograph, the sketch plan, and the description of those present, if they would be of any use to him.

Thus has golf served philately, and thus has being the mere husband of a golfer had its unforeseen advantage in contributing something to thematelic endeavours.

— Dr Plato Mavros, Harare, Zimbabwe

Challenger disaster cover?

DEAR SIR — In the May 1985 issue of the *SA Philatelist*, p 129 Mr D Slater-Kinghorn of Durban refers to the Challenger flying boat air crash of 1 May 1939.

As a result of his request I would like to supply the following information: I have in my possession a cover which is said to be from the Challenger disaster. It was sold to me by a reputable dealer in Pretoria.

The cover does not bear any of the cachet's referred to by Mr Slater-Kinghorn, probably because of the fact that the cover was severely damaged.

The cover is in blue and approx 150mm x 120mm. It was sent from Chiman Al Desai & Co, Munsor Building, Main Street (Box 374) COLOMBO. Due to the damage it is not possible to decipher the address.

However, it seems as if the Post Office was able to do so for the damaged cover was forwarded to The Natal Funding & Agency Co, 46 Anglo Afn House, Smith Street, Durban. The damaged cover was sent in an official OHMS brown envelope from the Postmaster, Johannesburg, and is franked with a 30 mm double circle Johannesburg cancellation, dated Johannesburg 4 May 1939 ie three days after the fatal crash.

The time of departure from Johannesburg looks like 13h00 hours and cancellation no 91 was used.

This could be a very early recording of mail salvaged from the Challenger crash and I trust that it is of assistance to Mr Slater-Kinghorn. Unfortunately the official cover does not photostat very well as is also the case with the damaged cover.

— Andries van der Walt, Total Stamp Club

Cape international postcards

DEAR SIR — I have found Dr Christopher Board's article on the Cape of Good Hope international postcards 1883-1910 in the July 1985 issue of *The SA Philatelist* most interesting.

There is one statement, however, which calls for comment and possible further investigation. It concerns the 1½d card surcharged "one Halfpenny" in two lines.

Dr Board says the card so surcharged was the 1½d card with the "Union Postale Universelle" inscription in grey, ie the card prepared for use in 1883 but not issued until later, probably 1895.

Unused and used copies of the surcharged "One Halfpenny" card in my collection, however, are both without the inscription "Union Postale Universelle". Perhaps two types of the 1½d cards were surcharged, one with the UPU inscription and one without it. But there seems to be another as well.

In the Higgins & Gage catalogue of the postal stationery of the world a card is listed which is exactly the same as the two cards I have, described above, but with the addition of a view at the back. It is stated that the card was a special card issued in 1898 for the Grahamstown Exhibition.

The card is shown as being very scarce, and no mention is made in Higgins & Gage of any similar card without the view on the back.

I am not a student of Cape postal history and know nothing of the Grahamstown Exhibition of 1898. It would be interesting to know what the view was, and circumstances of the issue of the card; also where there should be no record on any ½d on ½d card without the addition of the view on the back.

The used copy of the card which I have, was used in Grahamstown in September 1899, and the message indicates that it was obviously used in the ordinary course of cor-

respondence. — E C Wright, Maritzburg Philatelic Society, Pietermaritzburg

DEAR SIR — "Die Oranje-Vrystaat se artillerie" by Andre Bezuidenhout in *The SA Philatelist* of August 1985, p 201, is an excellent study worthy of congratulation.

To add to Mr Bezuidenhout's research, I can report a cover with two strikes of the large circular 'Oranje Vrystaat Artillerie' in light green. The cover is endorsed 'indiens', postmarked Bloemfontein 11 January 1892 and backstamped Winburg O F State on 12 January 1892 —

— John Sandilands, Pretoria

From fish market to Fiscal

DEAR SIR — Regarding the fine old cover which was reproduced with H Blake's letter on p. 193 of *The SA Philatelist* (August 1985):

High double Dutch is an extremely fishy language to read, firstly because penmanship in the VOIC days was frequently indifferent, and secondly because there was no such thing as standardised spelling.

Having spent some time with similar covers, as well as with large parts of Van Riebeeck's journal, reprinted in the original orthography, with notes, I read the address as follows:

"Te Behandige Aen/Anna Rebecka Woonde/inde Straet by Vieschael". In English therefore: To be handed to/Anna Rebecka living/in the street at (the) Fiscal. I don't think there was a formal fish market at the Cape in VOIC days.

I would be happy to have a stab at the bottom left-hand corner as well, if your correspondent would send me a clear photocopy in original size. — W Grütter, Cape Town

OBITUARY

D E C DALE

ALTHOUGH he had been in poor health for some time, the passing of Darrell Dale was nevertheless a shock compounded by the fact that he always seemed 'eternal'. He died peacefully in his sleep on 7 June 1985.

In Bulawayo, where he lived for many years, he was well known for his open home on Saturday mornings, when lively discussions centering on local philatelic affairs and those of the Federation, in which he was a firm believer and of which he was a committed supporter, took place.

He served in the Federation's executive in the years 1975 and 1976 as Vice-president for outside territories, emulating the fine example of the late Jack Creewel RDPSA in never missing a meeting. During his terms of office he visited all societies under his jurisdiction, holding this to be mandatory. During the period societies were more aware of Federation matters than they ever were before (and regrettably, than they have been since).

Darrell was a founder member of the Mashonaland Philatelic Society and the Midlands Stamp Club, to which he donated a trophy to be competed for at the latter's annual philatelic weekend, but his greatest love was the Royal Philatelic Society of Rhodesia (later Zimbabwe), which he served as chairman for a number of years. He was granted honorary life membership of the Midlands Stamp Club.

He will be best remembered for his reference collection of first Mardon printings of Rhodesia definitives, on which he spent a tremendous amount of time to ensure that it was presented clearly and concisely for the benefit of students of that era of Rhodesian philately. He was a stickler for presentation and I well remember, on a visit to London, having to tramp the streets in the quest for philatelic A sheets — the only acceptable

medium upon which to present his collections.

He had fine collections of Australia and Papua New Guinea, where correspondents kept him up to date. In return they benefitted from his knowledge of matters Rhodesian by gaining awards at Australian national exhibitions.

Readers will remember him as the regular contributor on the opening and closing of postal offices in Rhodesia/Zimbabwe.

It may surprise many to know that Darrell was a past winner of the Comrades Marathon, in 1927. At an annual get-together he was heard to chide Bruce Fordyce for complaining of a certain road camber: Darrell contended that in his day one had to be on the look-out for potholes. His medal was a great source of pride.

I am sure readers will join me in extending deepest sympathy to his daughters Lauriel and Lorraine and their families. — Don Mitchell

SID BASSINGTHWAIGHTE

Sid was born 75 years ago in Keetmanshoop, South West Africa, and had lived in Pietersburg since 1959. There were therefore two obvious subjects for his collection, viz SWA and Pietersburg stamps. He had fine collections of both. Apart from these he was a general collector of South Africa, the homelands and all countries south of the Zambezi. He was the first winner of the Pidsley Trophy which is competed for in the club.

No junior collector was sent away empty handed after a visit to Sid and he always tried to encourage anyone who was interested in stamps.

Fortunately his younger son, Don, is a keen collector and so we hope that Sid's collection will not be broken up or sold.

We shall miss Sid greatly and our club is the poorer for his passing on 15 May 1985.

— W D Southon, Pietersburg Philatelic Society

THE END OF AN ERA

DURING the Elpex national stamp exhibition in East London in early August, one of the judges, Terrence Radue, took ill and was rushed to hospital. He died at the end of the week.

His obituary was written by Dr Frank Drusinsky, who concluded his note to the Editor: "Excuse my hurry, but I have to fly to Cape Town for aortic artery surgery. Groete en sterkte."

And his obituary was written by Leo Hellmann, who in his note to the Editor says: "The three of us used to meet Sunday mornings, rain or sunshine . . . only I am left of the trio."



TERENCE DELVILLE RADUE

TO A large number of people, and especially to philatelists, the fairly sudden death of Terrence came as a saddening blow. Our friend had just barely completed his duties as a judge at Elpex 85, when he was laid low by a heart attack.

Terrence was born in King William's Town on 16 November 1917, and received his education at Dale College. Ever since a sick bed in boyhood, he had become interested in stamps, and this love for philately stuck with him for the rest of his life. After matriculating, he joined the Railway Services as a clerk at Pretoria. When war broke out he volunteered his services, and was later boarded out of the Army because of war wounds. These wounds led to amputation of a lower limb, and Terrence retired to East London in 1961.

From this time on, Terrence devoted much of his time to philately, and was particularly keen in promoting an interest in stamps among junior scholars. For a number of years he had been a judge at national exhibitions, and was a pillar of strength, both in advice and solid work, whenever a national exhibition was staged in East London.

In addition, he was a member of the Royal Philatelic Society of London. His other hobbies were gardening and fishing; he was particularly interested in the cultivation of orchids and ferns.

Finally, he was laid to rest by his Brother Moths, in an impressive and sad manner.

To his popular and hardworking wife Sue, and his sons Keith and Dudley, we extend our deepest sympathies.

Ave atque Vale!

— Frank Drusinsky

FRANK DRUSINSKY

DR FRANK Drusinsky who practiced as a medical practitioner in East London for forty years and who retired recently, died on Saturday 31 August 1985.

Dr Drusinsky qualified at the University of Cape Town in 1940 and came to East London six years later. He was not a stranger to the city as he had served his housemanship in the Frere Hospital in 1941. Between doing his housemanship and returning to settle in East London, he practised in Dordrecht for four years. Prior to leaving for Dordrecht he had married Irene Pincus of East London.

Back in East London he soon became a prominent member of the medical profession. He was the honorary assistant physician at the Frere Hospital for more than 20 years and for 25 years he was in charge of the day to day running of the Infectious Diseases Hospital. He was honoured by the Medical Association of South Africa by being elected an honorary life member of that association.

During his leisure time he devoted his energies to stamp and coin collecting and took an active interest in masonic activities. He was in due course elected as the Master of his Lodge, the Netherlandic Constitution as it was then known. He has also taken an active interest in the Lion Association.

East London Philatelic Society and philately in South Africa have suffered a great loss in the passing of Frank Drusinsky. He will be principally remembered for the Anglo-Boer War collection he had assembled, and for the research he had put into it. His philatelic interests were very wide and he had a considerable knowledge of SA postal history and exhibitions of stamps. He was a judge at some national exhibitions. In 1976 he was the President of SA Philatelic Federation. His cheerful disposition and his knowledge of stamps which he shared with many, made him a popular collector.

He leaves behind his wife Irene and four daughters (the two youngest being twins) and six grandchildren.

— Leo Hellmann

LOOKING BACK

From the South African Philatelist
60 YEARS AGO
October 1925

The Royal Train in Rhodesia

Mr A Lichtenstein informs us that covers posted on the Prince of Wales' train while it was in Rhodesia, and which were received by him, bore the same postmark as that which was applied to letters while the train was in the Union.

Here we have an unusual situation, namely, a partly Afrikaans postmark on the stamps of a country whose official language is English only, and the Union's Coat-of-Arms postmarked on the stamps of another country.

30 YEARS AGO

October 1955

Extract from a report by Douglas Roth on an exhibition in Stockholm

The super Grand Prix, that is the one awarded the best collection in the invited Class of Honour, and the most coveted distinction of all, was awarded to a wonderful collection of first type Greece which was, without exaggeration, the worst written up collection I have ever seen. However the stamps were there and that is what counted with the highly experienced Jury drawn from many countries who were plainly unimpressed by expert calligraphists who failed to produce stamps on a par with their penmanship. In Europe few, if any, philatelists will travel far to see 'writing-up'. What they want is to see stamps in fine condition which are normally beyond their reach.

George W. Holschauer



COLONIAL STAMP CO.

The British Empire Specialists

WE MAINTAIN ONE OF AMERICA'S FINEST AND MOST COMPREHENSIVE STOCKS OF PRE-1935 EMPIRE MATERIAL FROM ADEN TO ZULULAND. EXTENSIVE PRIVATE TREATY SERVICES ARE AT YOUR DISPOSAL PERIODIC AUCTIONS

CATALOGUE SUBSCRIPTIONS UPON REQUEST.

Members: ASDA, APS, IFSDA, CSDA, Philatelic Foundation



5410 Wilshire Boulevard
Los Angeles, California 90036
U.S.A.
(213) 933-9435

Cable Address "PHILATELY" LOS ANGELES

COVERS

ARGYLL ETKIN HAVE MOVED

to new Ground Floor Gallery and Showroom Premises in the heart of the West End, where we look forward to welcoming old and new friends.

A call to meet us and to see our superb Display of Fine Stamps, Proofs, Covers and Postal History material of virtually all countries of the world should be on the itinerary of all visitors to London.

We are located very conveniently on the south side of Conduit Street, half-way between New Bond Street and Regent Street, within a short walk of four Underground Stations; Bond Street, Oxford Circus, Piccadilly Circus and Green Park.

Our Valuation and Buying Department, where expertise, efficiency and expedition are bywords, is at your service.

One of the greatest Specialised Stocks in the world awaits you.

PROOFS & ESSAYS

POSTAL STATIONERY

The Argyll Etkin Gallery



48 CONDUIT STREET
NEW BOND STREET
LONDON W1R 9FB
Telephone: 01-437-7800 (5 lines)



POSTAL HISTORY

ATTENTION PHILATELISTS

The East Rand Philatelic Society
will be holding a

Mini Exhibition
from

5 - 9 November 1985,
in the

John Barrable Hall,
opposite the
Northern Areas Sports Club,
Northmead, Benoni

The entrance is in Brodigan Street, Northmead and the hall is bordered by Hanekam Street in Northmead and O'Reilly Merry Street, in Rynfield.

The hours of attendance are:

5 Nov.: 12h00 — 20h00
6 Nov.: 14h00 — 19h00
7 Nov.: 14h00 — 19h00
8 Nov.: 14h00 — 20h00
9 Nov.: 09h00 — 18h00

DURBAN STAMP AUCTIONS



★ ★ ★ 15 November 1985 ★ ★ ★



Do not miss this outstanding postal auction. We detail a complete dealer's stock who has closed down his stamp shop. Very many delectable items for the collector and for the investor, plus dozens of collections and accumulations to choose from.

Recent auctions have shown strong demand for investment-type material and prices have started to move up.

BERNARD R TEICHER

PO BOX 461 PINETOWN 3600
Telephone (031) 783722

Recalling the 1936 Empire Exhibition

JOHANNESBURG 100, next year's international stamp exhibition to mark the centenary of Johannesburg, is just around the corner, so to speak.

At Johannesburg's half-century in 1936 a great Empire Exhibition was held. This incorporated an international stamp exhibition (for which the Jipex sheets were issued) and which was attended by a few of the philatelic leaders we know so well today — including Jónas Michelson RDPSA, our "Mr Philately".

Mr Hymie Alper of Johannesburg has several copies of the Star-Maid News-Bulletin issued daily during the Empire Exhibition, and from his copies we reproduce some reports of philatelic interest.

"JIPEX" STAMPS GOING FAST

Long Queues of Buyers Yesterday

ALL yesterday, from the time the Philatelic Exhibition opened in the Hall of Industries and Home-crafts, there was a queue of people at the Post Office counter in the hall buying "Jipex" stamps.

The stamps — ordinary South African penny and half-penny issues with "Jipex" printed across them, are only obtainable in four blocks at a time, and have been issued as a special souvenir of the Johannesburg International Philatelic Exhibition.

Those who had bought their stamps went off to some table in

the hall where they could address some of the special commemorative envelopes — also obtainable at the stamp counter — and send off a few words of greeting as an excuse for the use of the stamps.

Some visitors, in order to obtain quantities of the stamps, lined up in the queue again as soon as they had bought one lot, and bought another. One young man, an enthusiast, evidently, passed the counter ten times in the course of the morning.

Only about £4,000 worth of the stamps have been printed, so the supply will not last very long at the present rate of disposal. It is rumoured that an American firm ordered £15,000 worth, but that the order could not be accepted on account of the limited issue.

PHILATELISTS' CONFERENCE 10s. Issue for Coronation

THIRTY delegates from the Federated Philatelic Societies of the Union and the Rhodesias will attend the Philatelic Conference which will begin at Milner Park at 11 a.m. to-morrow.

The conference will be opened by Mr. H. G. Lenton, the Postmaster-General.

The financial aspect of stamp collecting will be the chief topic of discussion at the conference.

It is intended to protest against the proposal to issue special stamps to the value of 10/- to mark the King's Coronation. Philatelists contend that this is merely an exploitation of collectors who wish to secure complete sets of the special issue.

The values of the International Philatelic Exhibition to philately in South Africa will be discussed.

"JIPEX" STAMP ISSUE NEARING CLOSE No Reprint of Souvenirs

BY "JIPEX."

TODAY marks the opening of the second and final week of "Jipex" when it is expected that the Patron in Chief, His Excellency the Governor-General, the Earl of Clarendon, will honour the "Jipex" exhibition with an unofficial visit.

It is expected that there will be an increased demand for these souvenir sets, as it is now general knowledge that there will be no reprint of this issue, once the present limited stock becomes exhausted.

Under the existing method of distribution, the committee responsible hope to eke out the supply until the closing date of the exhibition, i.e., November 14. It is therefore, more than likely that enthusiasts will receive each one set only from now on.

The Press notice intimating to the general public that they could, if not able to attend the Exhibition, make application to the Postmaster, Johannesburg, was taken far too literally, with the result that thousands of "Jipex" requests accompanied by postal orders varying from 12/- to many pounds have poured in from all over the country.

In consequence of this, a large staff are engaged in dealing with this unforeseen financial and clerical "Jipex" monster.

It is most interesting to watch the different methods adopted by eager purchasers who queue up daily to satisfy their requirements of relatives and friends the world over for these desirable "Jipex" souvenirs.

The much harrassed and over-worked Postmaster and his ever obliging staff who stand from 10 a.m. to 10 p.m. in a limited space of the bijou "Jipex" post office, are deserving of far more consideration than has been accorded them by the public during the past hectic week, and it is hoped that the final week, with the assistance of its special instructive pamphlet, will be less arduous to all concerned in the "Jipex" contest.

MR. J. H. CURLE'S TRANSVAAL STAMP COLLECTION Rare Issues On Display

collection contains eight with the wide-spaced setting, three having wide roulettes. There are two with double overprints in red and in black of which no other copies are known to exist; two of the 6d. with inverted overprint, of which only one or two other examples have been recorded, and one of 1s. with inverted overprint.

There are several copies of the "Transvaal" error, one being in a mint pair with the normal stamp, and there is one used on the entire original envelope, a piece that is probably unique.

Several frames were filled with a selection of China and Treaty Ports from the 200 volume collection founded by Mr. J. A. Agnew, acknowledged to be the finest in the world. It incorporates the collection of proofs, essays and colour trials made by Sir Robert Hart, Inspector of Posts and Customs, China.

Some years before the entry of China into the Postal Union a system was in practice for a time by which letters intended for a foreign country, instead of passing through the agency of that country was accepted by the Chinese Post Office in the town of dispatch, these being franked with Chinese stamps and cancelled in the usual way. But the Post Office also applied stamps of approximately the same value of the foreign agency through which they would ordinarily have passed in the port of sailing—Shanghai or Hong-Kong—cancelling them temporarily with the "I.P.O." (Imperial Post Office) chop.

THE grand championship collection of the Johannesburg International Philatelic Exhibition which opened at Milner Park this week is attracting the interest of hundreds of visitors. It is owned by Mr. J. H. Curle, and is confined to issues of the Transvaal.

Of the tete-beche varieties of the early issues there are about 20 varieties and sub-varieties. Of the combined varieties only about 50 examples are known to exist. Twenty of them are in His Majesty's collection, and the Taping collection in the British Museum, while 18 are in Mr. Curle's collection.

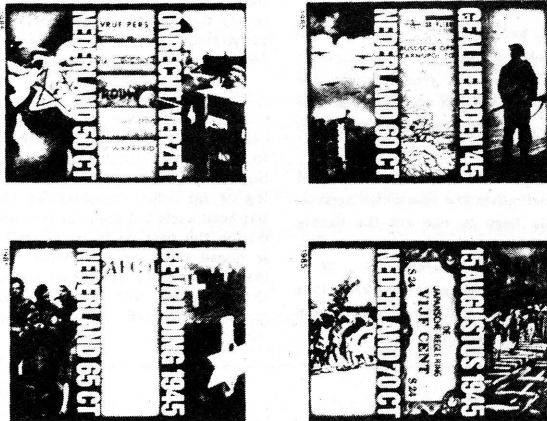
The scarcity of the tete-beche varieties can be gathered from the figures given, but they by no means hold pride of place for there are many other stamps of much greater rarity.

RED OVERPRINTS.

Perhaps the rarest of all Transvaal stamps are to be found in the red "V.R.L." overprints of 1877. These stamps were issued immediately after the British occupation, but were only in use for about 12 days when they were replaced by stamps with the overprint in black. Mr. Curle's

Verset en bevryding 1940-1945

Op 5 Mei is 4 seëls uitgegee ter herdenking aan 'n tydperk wat deur baie Nederlandse immigrante nie maklik vergeet sal word nie. Dit is deur die meeste immigrante hier meegemaak en het nog nare herinneringe van dié tyd. Die 4 seëls weergee enkele van die gebeurtenisse:



50 sent: Onreg en verset — Die seël vertoon drie fasette deur middel van foto's:

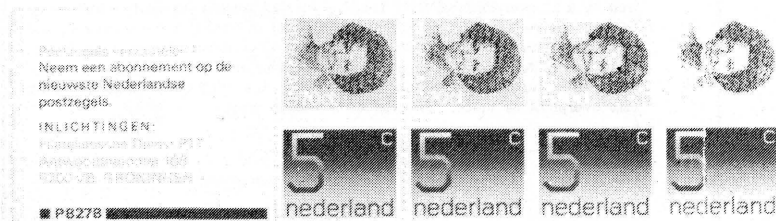
- (a) Die opnaai van die Jodester
 - (b) Illegale koerante
 - (c) Skietoefeninge van die ondergrondse in Amsterdam
- 60 sent: Bevryding deur die geallieerdes 1945:

- (a) Vliegtuie gooi voedsel af (daardie koekies het té lekker gesmaak! Red.)
 - (b) Koerant (Die Vliegende Hollander) word deur vliegtuie afgegooi
 - (c) Waarskynlik 'n Poolse soldaat wat geland het te Arnhem.
- 65 sent: Bevryding 1945:

- (a) Foto's van Bevryding geneem in Amsterdam.
 - (b) Parool, die koerant wat eerste legaal uitgegee is.
 - (c) Die Amerikaanse erebegraafplaas in Margraten in Limburg. Die stigter was kaptein Shomon.
- 70 sent: Oorlogsleed:

- (a) Oorlogsleed wat deur gevangenes gelei is in die interneringskampe van die Japanners. Vroue wat vir die kampbewaarders moes buig.
- (b) Kampgeld- 5 sent deur die Japanners uitgegee.
- (c) Die berugte Burma-spoorlyn.

Vir die seëlboekie versamelaars die volgende nuus: nuwe seëlboekie 27B is op 1 April uitgegee. Koste FL3.00



EUROPA-seëls — CEPT

Op 4 Junie het daar Europa-seëls (twee) uitgekome met die tema vir 1985 — Musiek.

Die Europese Parlement het 1985 as die jaar van musiek gekies. Die aanleiding hiertoe was dat 300 jaar gelede Georg Friedrich Händel, Johann Sebastian Bach en Domenico Scarlatti gebore is.

Die seëls se waarde is 50 sent — klavier; 70 sent gestileerde orrel. Die ontwerper van die seëls is Gielijn Esher.



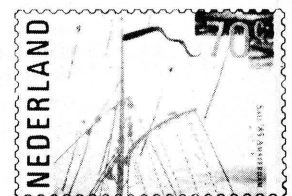
Amsterdam: Gekombineerde seëluitgawe

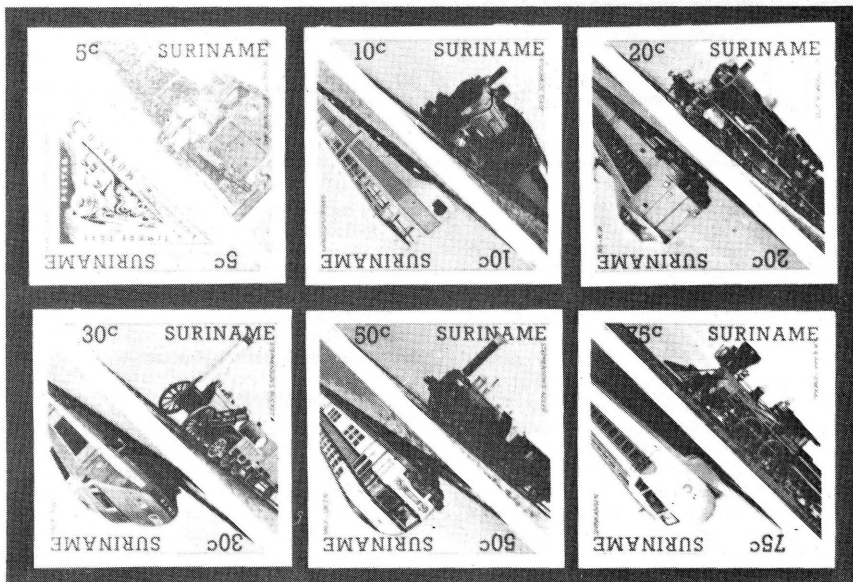
Op 2 Julie is daar 3 spesiale seëls uitgegee wat betrekking op Amsterdam het.

50 sent — Rijksmuseum gelede en hede. Vir die meeste besoekers aan Amsterdam is dit 'n moet om dié museum te besoek en dus nie onbekend nie. Op Maandag 13 Julie 1885 is die museum officieel geopen. Die ontwerp is van Dr P J Cuypers. Daar kom jaarliks 1 miljoen besoekers uit alle dele van die wêreld.

60 sent — Die kweekskool vir seevaart is op 24 Oktober 1785 gestig. Vanaf 1971 is dit die Stigting Hoër Seevaarskool Amsterdam.

70 sent — Sail 1985. Vir die seilliefhebber is dit 'n kans om baie seilskepe van die wêreld te bewonder. Amsterdam tree 'n paar eeue terug om die trotse stad te word van die goue tyd. Skepe soos viermasters, barke, skoeners, brikke ens sal daar te sien wees.





Seëls van Suriname

75 jaar kamer van koophandel en fabriek: 2 spesiale seëls is op 29 April uitgegee. 50 sent en 90 sent: op die seëls is die wapen van Suriname en die logo van die Verenigde Nasies.

Antieke en Moderne treine: Hier is iets vir die tema versamelaar om aan te smul. Sommer 12 seëls wat op 5 Junie 1985 verskyn het.

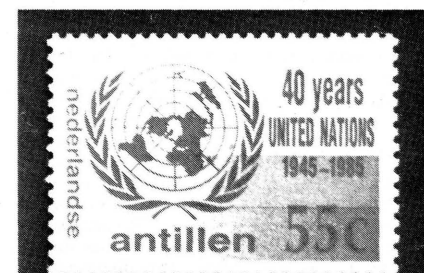
Die 5 sent-seël is 'n heruitgawe van Monaco 1945 en 1953 se treinseëls.

- 10 sent — stoomlokomotief Dan en die Landspoorweg
- 20 sent — N S stoomlokomotief No 3737 en die NSIC III.
- 30 sent — Stephenson's Rocket en die SNCF — TGV.
- 50 sent — Stephenson's Adler en die SNCF — UB2 N.
- 75 sent — General en Shinkansen.

Nederlandse Antillen

Welsynseëls is op 29 April 1985 uitgegee. Drie seëls met toeslag ten bate vir sosiale en kulturele organisasies het verskyn:

- 45 sent plus 20 sent — Blikbrein-speletjies
- 55 sent plus 255 sent — musiekgenot
- 100 sent plus 50 sent — Breakdancing.



40 jaar Verenigde Nasies: 2 seëls het verskyn met as ontwerp die logo vna die Verenigde Nasies. Die waardes is 55 sent en FL1.00.

W H Hardijzer

Special offer from ATA

TJE American Topical Association has gathered together 34 years of its vast publication output into one complete topical philatelic library — a full metre-long shelf space, weighing over 20 kg and consisting of 157 books and publications from 1949 to 1983.

A special offer for \$1,00 per day makes \$477,50 worth of individual volumes available at only \$35,80 per month for a 10-month lay-away plan or a 35% cash saving in a single remittance of \$309,95.

The library includes (1) All available ATA handbooks on topics A-Z; (2) ATA topical digests of translations and worldwide reference articles; (3) complete back issues of *Topical Time* — from the very first issue (Vol 1-23 in reprint books, vol 24-34 in original issues); (4) all available topical new issue annual summaries; and (5) all completely indexed for 34

years: 1949-1983.

This collection covers over 5 000 years of history, 143 years of philately and 34 years of ATA topical stamp publications at one's fingertips. Send three IRCs to the American Topical Association, 5014 West Center Street, Milwaukee, Wisconsin 53210, USA and ask for details.

A special offer for \$1,00 per day makes \$477,50 worth of individual volumes available at only \$35,80 per month for a 10-month lay-away plan or a 35% cash saving in a single remittance of \$309,95.

The library includes (1) All available ATA handbooks on topics A-Z; (2) ATA topical digests of translations and worldwide reference articles; (3) complete back issues of *Topical Time* — from the very first issue (Vol 1-23) in reprint books, vol 24-34 in original issues); (4) all available topical new issue annual summaries; and (5) all completely indexed for 34 years; 1949-1983.

This collection covers over 5 000 years of history, 143 years of ATA topical stamp publications at one's fingertips. Send three IRCs to the American Topical Association, 5014 West Center Street, Milwaukee, Wisconsin 53210, USA and ask details.

Society News ~ Onderonies

AFRIKAANSE FILATELIEVERENIGING VAN PRETORIA

July — Dr Andrödy-Younga, bekende filatelis en 'n nasionale beoordelaar, was die gas van die AFP en het ook die beoordeling van die tematiese-kompetisie waargeneem.

Die getal deelnemers aan die kompetisie was teurstellend. Nadat Dr Andrödy-Younga die beoordeling waargeneem het, het hy sy kommentaar op die versamelings gelewer en interessante wenke gegee in verband met tematiese uitstallings. Hy het beklemtoon dat oorspronklikheid dikwels die deurslag gee tussen gelykwaardige versamelings.

Prof H L Gonin se versameling Switzerland Pro Juventate 1912-1982 is as die wenner aangewys. Prof C A van Rooy se versameling 'Kroningsseëls van Koning George VI was ook baie verdienstelik.

— H J Friebus

BOPHUTHATSWANA PHILATELIC CLUB

August — Ten members attended to see the first entries in our competition for the letter "A". Those shown were Ascension Island by Mr Fourie, Animals by Prof and Mrs Delahunty, Animals on heraldic motifs by Prof Beck and Aerogrammes by Mr Howden. These entries were thoroughly examined by members and remarks on these were made by Mr Rossouw at the request of the chairman, who had an entry so could not criticise in this instance.

All present agreed that our first entries of this nature were good and that the exercise had been well worthwhile. The letter "B" was chosen for the September meeting. There was discussion on whether the next letter should be chosen in alphabetical order or whether it would be desirable to put all letters in a "hat" and draw one out. The matter was not resolved and will be discussed again. It was felt preferable to have an idea in advance of what the next few letters should be in order to prepare entries.

One of our country members, Mr Gerald Phillips of Gaborone, had written to suggest that one or two monthly meetings might take place during an afternoon one weekend. This might facilitate him and the other country member in Bophuthatswana. In the case of Mr Phillips border closing times meant that if he attended a meeting he must spend the night unless it were held during an afternoon.

The chairman briefed members on an exhibition he had seen whilst overseas on stamps of musical instruments to commemorate European Music Year. In this Philatelic Music Circle was founded in 1969 by a group of 26 people and now has nearly 500 members.

September — Due to some late arrangements some of our members were unable to attend so we only had seven persons present. Our secretary unfortunately could not be present so the chairman took on these duties in addition to his own!

It was decided that our November meeting should be held on the afternoon of Sunday 3rd to allow some of our country members the opportunity to attend. This came about following a suggestion from Mr Gerald Phillips who resides in Gaborone in Botswana. As the border between his country and ours closes at 20h00, attending an evening meeting meant that he had to spend the night. It is also hoped that our members from Pilanesberg National Park may also be able to attend. However it is unlikely that our other country members in Cape Town, Durban and Portugal will be able to come!

The letter for evening exhibits was "B" and there were three entries. Mrs Anne Irwin showed Belgium, Prof and Mrs Delahunty Bridges and Prof Beck Basutoland — historical perspective. The chairman congratulated the three members for their entries and especially Prof Beck, who had won a bronze medal for his exhibit at Elpex '85.

It was reported that it was not possible to get a post box at the GPO at Mmabatho as some had been vandalised and the rest were in use. It was decided to continue to use that of the secretary. However, after the meeting, the chairman visited the Head

Postmaster and arranged for a box at a satellite station nearby.

The evening finished with a slide show on South African airmails 1922-1935. This was found to be well arranged and presented. Members agreed that it was one of the best they had seen. — R H G Howden

CASPIJ

July — Under the heading of Censorship we were treated to some unusual and common material by various members. Aubrey Katzeff showed censor marks on mail entering Israel. Harry Gottschalk showed material from the 1914-18 war in Palestine. R Jeidel RDPSA showed mail from the Gaza strip and Bethlehem. He also showed a cover with a government cachet referring the letter to the International Red Cross.

Max Peisach RDPSA — as usual with something unusual — showed material with censorship marks showing that the material had been through X-rays to check that the envelopes had been checked for letter bombs. These had been applied by the Atomic Energy Board. A label issued by the GPO warning people to check that they knew the sender of the letter was also shown.

Aubrey Mendelson showed pre- and postwar material, including exchange control which is also a form of censorship.

The second part of the evening's programme was a workshop. Rudi Jeidel discussed perforations and Max Peisach spoke on the use of ultra-violet light in philately. This was well demonstrated by Max with the aid of Leon Stein.

August — The annual quiz as usual had everybody in a good mood with the usual need of the catalogue to sort out the answers when there was argument with the answers given. Aubrey Mendelson was declared the winner and as punishment now has to set the quiz in 1986.

Inflation was the main subject of the evening and there was lots of discussion about the number of stamps needed today to post a letter using some of the earlier stamps of Israel (they are still legal and have never been demonitised). Hilda Jeidel RDPSA showed material that had been surcharged several times and Aubrey Katzeff as usual brought some money from his Pandora's Box. This together with the numerous stories told by members proved to be the most enjoyable.

Max Peisach by special request brought his exhibit dealing with the Pretoria coding machine. He discussed the various phases of experimentation which when seen with his exhibit show the detective in Max — a true bit of investigation in postal history of South Africa — especially when one remembers that none of this information was ever made available. The postal codes as we know them today only became known much later. He also dealt with the magnetic lines and the phosphor lines (which linked to last month's meeting). — Dr Leon Stein

EAST LONDON PHILATELIC SOCIETY

July — The president welcomed all present and set organising hearts aflutter by saying that Elpex was on the doorstep. He wishes all the organisers and helpers all the best of success.

The competition was the first of our alphabet showings, for the letter A. Excellent viewing was provided by the interesting album pages on display, and Leo Hellmann won the small prize with his airmails of Canada.

August — The meeting started on a sad note with the president calling for a minute of silence in memory of the late Terrence Radue, who passed away during the Elpex period. Leo Hellmann paid tribute to Terrence, a long-standing member of the society.

From all reports and remarks overheard Elpex was a resounding success, much enjoyed by all. As we are not having competitive exhibiting this year, we continued the alphabet with the letter B, which brought a real flutter of birds and butterflies, all very beautiful.

Best entry by popular vote was Bangladesh put up by Dr Reddi, who was awarded a small prize.

We were treated to two slide shows. One on RSA stamps, errors, plating and gums, was interesting but too advanced for many of our members.

In complete contrast Dave McWilliams gave us a 'roving camera' coverage of Elpex, which was very well received. — Jeanne Hutchinson

FISH HOEK PHILATELIC SOCIETY

July — Our guest speaker and exhibitor was Mr R Goldblatt RDPSA, ex-president of the Royal, and he showed us an exciting and complete viewing of the Anglo-Boer War. We gleaned a great deal of historical knowledge from him and greatly benefited by the exhibit.

Preparations for our stamp day on 21 September are coming along well and we expect that it will be a good experiment which may well become an annual event.

August — Our new exchange superintendent, Mr Ware, was welcomed into office by the members. The evening was devoted to war philately and it was nice to see so many top class exhibits which were greatly appreciated by the viewers.

Mr Singels, Mr Hodgson, Mr Fischer, Mr Rowe and Mr Fennemore all showed off what they had. It was a very informative evening and I know that even those not so interested in history came away after appreciating what one can do with stamps if one puts one's mind to it and makes the time.

We saw exhibits dealing with the Crimean War, Anglo-Boer War, the First World War, the Second World War, the Korean War, and also the Falklands war — right up to the present day! and all on stamps!! — D A Sylvester

GERMISTON PHILATELIC SOCIETY

April — At this meeting six of the committee members exhibited:

Mr H C Mitchell exhibited the "twins" collection of Mr John W Hodgson. This depicted Twin cities — two towns/cities on each stamp; Twin stamps — two stamps of identical design; Similar stamps; and Similar stamps with a difference.

Mr W M Scott exhibited 20 pages on Czechoslovakia, bright and colourful.

Mr H de Lange exhibited the 2d, 3d, 4d, 5d and 6d variations and errors of his Rhodesian double heads.

Mr N W Davey exhibited covers and stamps of Egypt stretching from 1869 to 1888 definitives through to 1959.

Mr M N Jackson exhibited covers exploring the Ghandi theme.

Mr R Mephius exhibited RSA first day covers which had actually been postally used.

May — This meeting was called "My favourite page(s)". Six members exhibited:

Mr W M Scott showed 4 pages of miniature sheets of his Prince Charles collection.

Mr T Y Katahuzinos showed a cover of the maiden voyage of the SA *Agulhas* from Japan to South Africa in 1978.

Mr P Smith showed six sheets of the Silver Jubilee issue — two of South Africa and the other from Straits Settlement.

Mr N W Davey showed 32 pages of Switzerland.

Mr H C Mitchell showed seven pages of RSA ships on stamp and cover.

Mr R G L Mephius showed 26 pages of Danish West Indies 1855 to 1917.

June — On 19 June we were hosts to the Pretoria Railway Philatelic Society who brought the following exhibits with them:

Mr D Delplanque showed 29 pages of Hungary from 1918 to present day issues.

Mr a Reynard showed 31 pages on the GB 1d RED Die II. This was an authoritative work on the subject.

Mr O'Niel showed Transkei maxicards of the 1985 bridges showing shifts in the pictures.

Mr O'Neil also showed 99 pages of Malawi from independence to 1981 — a very colourful exhibit.

Mrs M Viljoen showed 64 pages of her SWA collection which showed quality material from the 1935 Silver Jubilee to the 1954 Definitive issue.

July — We were privileged to have Mr Glen Carpendale as guest speaker. He gave an address on the following two subjects:

Mounting and write-up of exhibits — a personal view; and

RSA — first definitives.

Mr Carpendale gave some tips on mounting and write-up of exhibits and then went on to describe how the nine different issues of the first RSA definitives can be distinguished from each other.

August — This meeting featured a lively discussion on the various printings of the RSA Building Definitives — it would be very difficult to distinguish between some of these printings.

— W M Scott

HIGHWAY PHILATELIC SOCIETY

August — Twenty-two members attended and all registered their thanks to our president, Tony Hitchcock, who arranged for the newsletter to be posted as a first day cover when our latest flower issue came out. Even to seeing that the stamps were put on where only the franking would reach it and no wavy lines.

Mr Blumberg, one of our members, brought some very interesting first day covers. Mr Blumberg had taken the trouble to send covers to the place of origin, so that on the first day of issue, they were returned to him, registered, through the post, bearing the correct franking for the special issue.

We were reminded of the interesting new facet in the definitive series, which has just come to light, and Tony clarified the changes made in the latest reprints.

On display were some lovely items of postal stationery dating from 1845, which were fascinating.

Don Mitchell gave a report back from the East London congress. The society wishes to congratulate Mrs McIntosh on becoming vice-president of the Federation. — Val Mann

MARITZBURG JUNIOR STAMP CLUB

"Sleepy Hollow" held their annual club competitions on 6 August at the Psychology Block of the University of Natal. Pupils from 5 schools participated: Athlone, Cordwales, Greytown, Hilton and Kearsney, with a total of 26 entries excluding of course those taking part in the national.

We wish to congratulate Mark Henderson (Cordwales — 12 years old) for winning the Maritzburg PS President's Rose Bowl for the best exhibit.

The Hathorn Cup for the best in the senior group (15-18) was won by Jonathan Stephenson of Hilton College. There were 7 entries.

The Aurex 79 Cup for the middle group (13-14) with 12 entries, went to Andrew Barnes of Cordwales while the Levegood Cup for the best exhibit in the junior group was won by Carol Hathorn of Athlone. (There were 7 entries and note that no one exhibit may win more than one trophy). There was an attendance of 46 pupils and 16 adults, all of whom enjoyed a tremendous evening.

Messrs Brian Bredekamp, Eric Holmberg and Godfrey Immelman undertook the duties as jurors and are thanked for undertaking the difficult task of determining the winners. They reported an unexpectedly high standard. It was obvious that those who had participated at Junass 85 had taken heed of the advice offered by the judges who officiated in Sasolburg, as their exhibits had undoubtedly improved considerably. — Eric Holmberg

NATAL PHILATELIC SOCIETY

17 July — We held our competition for the letter 'S' and there were six good entries.

Mrs J M Osborne showed stationery of Czechoslovakia; Mr G Ponsford 'Stars'; Dr Harry Campbell SWA; Mr Ken Wright 'Snow'; Mr H Cook Sugar cane and Mrs J Schultz showed Stained glass.

Dr Campbell was found to be the winner. Mr Cook second and Mrs Schultz third.

7 August — In spite of many members being away at Elpex, 30 members were present. By the fast delivery of the Post Office, our secretary was able to read out the Elpex winners to the meeting. (Sent by your correspondent at 10h00 Tuesday and received 13h00 Wednesday).

We had a fine display and talk by Mr N Mewett on Revenue stamps. Mr Mewett showed Central African Airway Services, semi-official stamps of Indonesia, Canadian Special Prairie service and Petrol Rationing cards from Rhodesia.

We also had a competition for the letter 'T', with four entries: Mr H Cook showed Tobacco; Mr G Ponsford Transport; Mrs J Schultz Trains and Mr N Hartley showed Cape Triangulars.

Mrs Schultz was judged the winner, Mr Cook second and Mr Ponsford third. — Rex Osborne

SANDTON PHILATELIC SOCIETY

August — The monthly crossword competition was won by our secretary, Audrey Metelerkamp. It is becoming obvious by the regularity of committee members winning competitions, that we have a panel of enthusiastic members running the society.

Danie Scheepers with his collection of South African postal stationery was our guest speaker and exhibitor. An extensive display of material including proof postcards, letter cards, newspaper wrappers and registered envelopes, gave an indication of the depth of his collection in this field.

This exhibit was an encouragement to our members as to how one can broaden a one country collection by perseverance and initiative, in order to make it stand out from the usual stamp collection.

Danie was fortunate enough to obtain many items which proved the fallibility of printers proof readers.

The meeting ended with a very fruitful swapping session, with many members rubbing their hands with glee at some of their acquisitions. — Eddie Kier

SASOLBURGSE FILATELIEVERENIGING

Maart — Ongelukkig was daar gedurende die maand 'n insinking in die bywoning van ons vergadering. Ons het die aand opgewakker deur ons lede se kennis, na aanleiding van 'n skyfiereeks oor Suid-Afrikaanse seëls te toets. Daar moes dikwels kopgekrap word om die verroeste kennis weer na vore te bring.

Die skyfievertoning is deur ons lede se versamelings voorafgegaan. Lino Basula het aan ons sy versameling oor "paddastoel" vertoon. Daartydens is interessante kommentaar ten opsigte van bladvulling en rangskikking gelewer.

Hans Slaghuis het daarna vir ons 'n interessante lesing oor tematies versameling gegee. Dit het weer eens na vore getree dat vir 'n tematies versameling daar dikwels heelwat navorsing gedoen moet word, maar dat daardie soeke talle interessantheite 'n mens se weg laat kruis.

April — Daar was 'n redelike opkoms vir hierdie vergadering. Daar moes ongelukkig verskoning gemaak word vir ons gasspreker, mnr Tommie Bothma, wat weens 'n operasie nie ons vergadering kon bywoon nie.

Theo Salzmann het vir ons 'n mooi Swaziland-versameling vertoon. Hy is deur Deon ten Napel met sy versameling oor die Suid-Afrikaanse Lugdiens gevolg. Konstruktiewe kommentaar is gelewer, onder andere oor die gebruik van gewone plastieksakkies, bv Bantex. Oor die algemeen was daar die gevoel dat hierdie sakkies afbreuk doen aan die kwaliteit van die versameling en dit sou beter wees indien assetaatsakkies gebruik word. Ons letterkompetisie is ook vir die soveelste keer deur Bets van Tonder gewen.

Mei — Hoewel dit koel was, het ons 'n redelike goeie opkoms gehad. Slegs enkele lede het 'n paar velle oor Australiese seëls saamgebring, maar interessantheite het wel uit die besprekings daarvan na vore getree. Daarna het Cor Poot vir ons 'n gedeelte van sy Nederlandse versameling vertoon. Hy is gevolg deur Bets van Tonder met haar onderwerps-versameling oor voëls.

Uit die besprekings wat op die versamelings gevolg het, het heelwat inligting na vore getree wat getoon het dat die lede heelwat navorsing doen om op hoogte van hul versamelings te kom.

Die letterkompetisie is deur Hans Slaghuis gewen, alhoewel die deelname weens die mense maar gering was. Vir die eerste keer het ons 'n ruilandaal gehou en dit was 'n reuse sukses.

Junie — Daar was 'n goeie opkoms. Twee van ons klubede het hul versamelings saamgebring. Wim Bleker was eerste aan die beurt met sy Olimpiese spele. Dit was 'n besonder interessante uitstalling.

Hy is gevolg deur Theo Offenberg se versameling van Jipex-velle. Hierdie versameling het ook van

goeie navorsing getuig.

Stoffel Kok het enkele velle van die Oos-Duitse ampelike seëls vertoon. Heelwat lede het dit interessant gevind. Ons letterkompetisie is deur Clive Kourie met sy Mafeking Besieged gewen. Sy aanbidding het van deeglike navorsing getuig.

Julie — Die opkoms was maar swak. Blykbaar het die weersomstandighede ons lede weggehou. Al die senior lede wat 'n positiewe bydrae tot Junass 85 gelewer het, is bedank. Die juniors is ook gelukkigewens met hul uitstekende prestasies. Hiertydens het hulle 2 silwer brons, 3 silwer, 3 silwer goud en 2 goue medaljes verower.

Jules Danneels, Stoffel Kok en Theo Offenberg het 'n paar velle oor Duitsland vertoon.

Jules het ook die letterkompetisie gewen en die aand is met 'n skyfievertoning afgesluit.

— C J Kok

SOCIETY OF ISRAEL PHILATELY

June — Our meeting was held on the 2nd Monday instead of the first, for some very good reasons, and took place in the foyer instead of in our usual room and in a club-like, relaxed atmosphere.

The meeting took the form of a report back by our members who had returned from the successful Israphil 85 exhibition in Tel Aviv. All the speakers spoke in glowing terms of the excellent venue and the high standard of the exhibitions, as well as the wonderful hospitality and friendliness extended to all exhibitors and visitors.

The members who spoke were our chairman Prof Harry Reef, David Stern, Boris Glassman, Eli Leibowitz, Selwyn Uria and Ivor Bernstein.

The following exhibitors showed their award winning entries at Israphil 85:

Eli Leibowitz — The Gambia Cameos in mint sheets, very rare items.

Prof Harry Reef — His excellent Palestine fore-runners.

As each of these exhibits won international awards, our society can be proud of these members.

Th exhibits of David Stern and Dr Hillel Faktor will be exhibited when available.

July — The meeting was well attended by 21 members and a distinguished visitor, Aubrey Katzeff — the chairman of our sister society in Cape Town — CASPIP — our friends of many years standing. Aubrey, in bringing greetings from his society, expressed his amazement in seeing no less than 11 exhibitors — more than 50% of those attended — a truly magnificent achievement by any standard, he pointed out.

The following exhibited 9 of his favourite sheets of Israel:

Aubrey Katzeff	Maurice Daniels
David Stern	Bernard Caplan
Ely Leibowitz	Lou Abrams
Lion Meron	Len Stein
Ivan Bernstein	Selwyn Uria
Willie Mann	

Most of the exhibitors read papers on their subjects, the highlight being the very lengthy and comprehensive paper on music by Jewish composers and musicians on stamps issued by various post offices. The paper included in great detail the biographies of these men of note complete with their works and achievements. It is truly a work of deep and lengthy research and a labour of love. Well worth a publication.

Avron Satil, the convener of the meeting, was astonished at the success of his venture and must be congratulated on his achievement in doing such a magnificent job.

The following votes of thanks were given:

Rabbi Zaiden on the exhibits of Aubrey Katzeff, Bernard Caplan and W Mann.

Boris Glassman, for Lionel Meron, David Stern, Lou Abrams.

Sam Kirschenbaum, for Maurice Daniels, Ely Leibowitz, Len Stein.

Aubrey Katzeff, for Selwyn Uria and Ivan Bernstein.

Aubrey also donated 5 envelopes franked with the SA Rugby stamps at the Rugby post office in Cape Town, the proceeds of which went to society funds. Thanks Aubrey.

August — Our chairman, Prof Harry Reef, was the convener, his subject being the postmarks on Israeli covers. Rabbi Zaiden prepared this with the aid of slides and a talk on each one, the background and history of each one, which forms part of the history of the country. We all enjoyed the most absorbing

evening.

David Stern thanked the exhibitor and presenter.

Maurice Daniels, who was a delegate at Elpex, gave a resume of the exhibition and congress, which, according to all reports, was well organised and enjoyable. — **W Mann**

SOUTH AFRICAN STAMP STUDY CIRCLE

June — Mr T Meyer provided members with an interesting display of postal history from Union.

Of general nature, it included first day issues, interprovincials, towns, conferences, congresses, exhibitions, scout events, war philately, aerophilately and maritime mail, so there was something to attract each one of us.

July — Members showed and discussed various items of interest.

August — Our guests for the afternoon, the RSA Study Group from Pretoria, showed that rather dull-looking stamps can take on a new interest. We were able to examine closely the Jan Smuts and GRA control blocks, among others, and discovered many new features hitherto overlooked.

We saw also a display of first day covers from 1910 to 1957, showing a variety of more unusual cancellations. — **Mrs D J Collie**

SPRINGS PHILATELIC SOCIETY

March — Mr T Hamlett visited our society and showed us his excellent collection of Botswana and Bechuanaland.

April — Mr Hamlett visited our society for a second time to finish his exhibition.

May — This meeting was one of the most enjoyable

in the history of the club. We changed our venue for one evening and had a sellit/swoppit evening instead of the auction. To end the evening we had an audio-visual presentation, which was enjoyed by all.

June — The meeting was attended by Ken Joseph and T Barnes. Stamps in all aspects were discussed.

July — For this gathering in the cold mid-winter we started a new programme for beginners and also members who would like to know more about what to collect, how to collect and also what to look for in your stamp collections. These talks will be given every second meeting by Mr Reg Horak. The evening ended with another audio-visual on the South African Defence Force Mail.

August — Mr J Gecelter visited our club with Mr R Trevis. A display of Malaria stamps issued in 1962 was put up by Chas Rogers.

Wants, Offers and exchange

20c per word per insertion payment with order. 25% discount on six consecutive insertions

AT FACE all new and current issues Alderley, Austria, Guernsey, Isle of Man, Jersey and Mocambique. Stamps Arcade, Box 1532, Port Elizabeth 6000.

ANGLO BOER WAR POW & CONCENTRATION CAMP COVERS and related material wanted; also British Forces in Egypt covers with Xmas Seals. Offers to Paul van Zeyl, Box 29012, Sunnyside 1032.

A LARGE STAMP COLLECTION FOR SALE: FDC's, control blocks/strips etc in mint and used covering South Africa, RSA, SWA, Rhodesia Northern and Southern, Nyasaland, Bechuanaland, Swaziland, Basutoland, Ascension, Tristan da Cunha, Homelands plus Independence of Colonials. PO Box 5215 West Krugersdorp. Tel.: Home 660-1098 or Business 665-5130.

ALL ABOUT APPROVALS. Taking a personal interest in our customer's collections we have some unusual material and the time to attend to your requests. Try J W-Maxwell Stamps, PO Box 1924, Port Shepstone, Natal 4240.

A SPECIAL STAMP COLLECTORS INSURANCE policy (as well as all other types of policies) is available. Witbank Insurance Brokers (Lionel Lewis, F.C.I.I.) Box 693, Witbank 1035. Phone 2614.

APPROVALS required of any postal history associated with my place of birth, Wynberg, Cape. David Crocker, P.O. Box 482, Florida 1710.

BRITISH FILM YEAR: Specially commissioned numbered FDC available October 1985 at R12; autographed R30 plus GST. Agents Springbok Stamp Co, PO Box 464 Claremont 7735.

BUYING 1935 Silver Jubilee and 1948 Silver Wedding complete collections: Mint. Never hinged. Paying US \$500,00 and \$450 respectively. Plate Block Mart, Box 2487 Kansas City KS 66110.

CAPE, Natal & OFS used postal stationery wanted. Offers to Rand Stamps (Van Zeyl), Box 29012, Sunnyside 0132.

COLLECTOR requires covers addressed to prominent people, ie J C Smuts, J Hofmeyr, S du Toit, P Cronje, Governor Cradock, Lord Milner, Collie, L Botha. Reply D Scheepers PO Box 65258 Benmore 2010.

COLLECTOR REQUIRES PHILATELIC and related material to illustrate historical development of South Africa from 1652 onwards. D Scheepers, PO Box 65258 Benmore 2010. Tel work 783-2227.

COLLECTIONS of SA R145, Britain (SG £550) R455, Commonwealth R98, Holland R96. World Coin collection R75. PO box 3850 Pietersburg, Tel (01521) 73887.

EXCHANGE LARGE SIZE STAMPS anywhere — no damaged stamps accepted. Send 100 receive 100. Also quantity exchange offered. Ed Peterson, 1265 N Harvard, Los Angeles CA 90029 USA.

EXCHANGE WANTED — used RSA, SWA and Homelands, 87 Brighton Drive, Summerstrand, Port Elizabeth 6001.

EXTENSIVE PRIVATE COLLECTION offered for sale: Please enquire and state your interests, and the relative listing pertaining to the country(ies) will be posted. You simply mark your offer for single stamps or groups on the listing and return. A South Africa, B South Africa covers, C Natal, D Rhodesia, E Transvaal, F Great Britain, G Australia, H Australia covers. Contact Kruger at Hoogland Hydro, PO Box 34210, Erasmia 0023, Tel (012) 783322.

FREE REGULAR PRICE LISTS of SA, SWA, Rhodesias, Protectorates, Pre Union etc. Benmore Stamps, PO Box 65664 Benmore 2010. Phone (011) 705-2479.

FOR THE LAST 20 years we have been constantly BUYERS of old and new WORLD PAPER MONEY, single items or bulk. All offers or samples welcome. Write to: Noray AG Flandria, CH-3981 Bitsch VS Switzerland.

I OFFER Roumanian stamps mint and used and other European countries for mint sets of South African stamps. Dr Costel Constantinesco, Intr. Caragiale 8, COD 70207 Bucarest Roumania.

LYDENBURG POSTAL HISTORY (until 1910) material required. Offers to H J Benn PO Box 195 Lydenburg 1120.

NORTHERN RHODESIA KGVI-QEII. Breaking up large collection. Mint and Used. Bargains. O Fourie PO Box 926 Ladysmith 3370.

NEW SUBSCRIBERS — Can obtain back numbers of the magazine at a special price. 20 copies from 1972-1984 (assorted) at only R5 post free. A wealth of interesting reading and information. Order from PO Box 375, Johannesburg 2000.

PERIODIC PRICE LISTS of Union, RSA, SWA, Homelands include FDC's, Varieties and Potpourri specials from Philactica, Box 3304 Secunda 2302.

POSTCARDS WANTED. Pre 1930 Southern Africa preferred but anything pre 1930, used and unused, considered for purchase or exchange for other postcards and postal history, South Africa and foreign. Ken Gibbon, 4 Derby Avenue, Benoni 1500. Tel. (011) 54-7811.

RUGBY and CRICKET philatelic items worldwide wanted. If you can help please contact Paul Robins, PO Box 141 Newlands 7725.

SLEGS 2000 UITGEREIK: Gedenkkoevert ter viering van 25 jaar verpleegopleiding in Windhoek. Prys R1,50, posgeld en registrasie R0,75 per bestelling. Te bestel van: Snr Reklamebeampte Posbus 21792 Windhoek 9000. Tel Nr 061-29251 x 623 of 626.

STAMP COLLECTION FOR SALE: FDC and Control Blocks of RSA, Homelands at ± 60% of Catalogue value. Tel.: (011) 805-2949 or write to W C E Prinsloo, PO Box 228 Halfway House 1685.

TRANSVAAL HANDBOOK Vol. I. Genuine and forged stamps of 1st Republic and their plating. Orders to Ye Olde Stamp Shoppe together with payment R20 + GST + R1,50 pp. PO Box 7127 Brackendowns 1454.

THREE RAND IN STAMPS — Refundable for Air-mail postage will bring you three COLOUR ILLUSTRATED THEMATIC CATALOGUES containing mint material only and no used junk. Member PTS, ASDA. Schaetzle AG. CH8832 Wollerau Switzerland.

UNION OF SA — early postal stationery wanted. Offers to Rand Stamps (Van Zeyl), Box 29012, Sunnyside 0132.

WANTED — SAAF, SA Navy, SA Airways and SWA Airways. Offers to Advertiser, Box 462 Amanzimtoti 4125. Tel. 932607.

WANTED — 2d LONDON PRINTINGS, Inscriptioal pieces, panes, gutters, Union, SWA Officials. M Tonking, 197 Sidney Avenue, Waterkloof 0181.

WANTED URGENTLY — Anglo-Boer ;war cover Basutoland to Bermuda. J Collie PO Box 238 Plettenberg Bay 6600.

125th ANNIVERSARY first steam train Durban to Point. Comm covers with four loco stamps. Durban cancel R12,50. Covers with Point cancel R10,00. Maxicards 2nd printing R25,00. All covers and cards signed by driver, fireman etc. All items 12% GST. Postage R1,00. Write to Philately and Art, 12 Escoval House, 437 Smith Street, Durban, Phone 3010257.

WHY BUY WHEN YOU CAN EXCHANGE. Join the Africa Exchange Circle and exchange with collectors all over the world. Write for details to PO Box 4945, Cape Town 8000 Dept. 2.

WORLD, BRITISH COLONIES, COMMONWEALTH, Thematics Approvals sent on request. Best prices. C Mathey PO Box 1698 Bellville 7530.

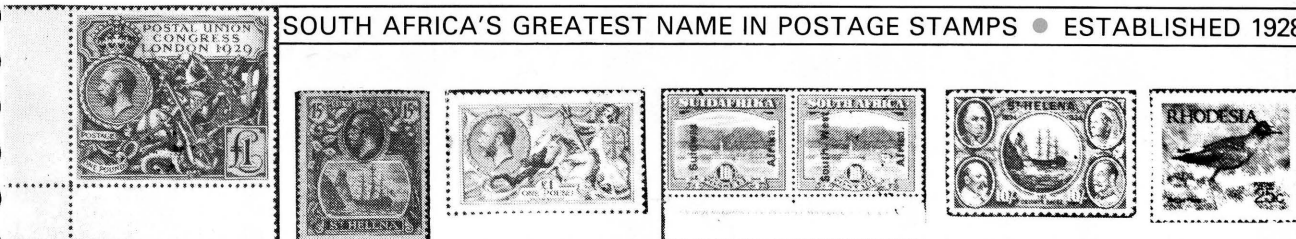
YE OLD STAMP SHOPPE offers worldwide new issue service, Abu Dhabi to Zimbabwe, at only 25% on face value. Also regular postal auctions. Ask for FREE catalogue. PO Box 7127, Brackendowns 1454.

ZAR postal stationery — proofs and used items wanted; also early stamps and revenues ("seconds" for study purposes) and postcards, particularly of Pretoria. Offers to Paul van Zeyl, Box 29012, Sunnyside 0132.

ROBERTSON STAMP COMPANY

**ARE BUYING FOR
IMMEDIATE CASH!
R250 000 Available!**

SOUTH AFRICA'S GREATEST NAME IN POSTAGE STAMPS • ESTABLISHED 1928



- ★ We URGENTLY need for various clients and stock the following and pay cash by return of post. We also sell by auction or private treaty at commissions as low as **10%**! We travel to view worthwhile collections anywhere in RSA and SWA by arrangement. Exchanges also considered.
- ★ BRITISH COMMONWEALTH. Better items, sets, collections and accumulations 1840-1952 especially George V period e.g. Falkland Islands and St. Kitts Centenary sets, St. Helena 15/-, Great Britain PUC £1, Definitives 2/6d, 5/-, 10/- & £1 mint. Proofs, Essays, errors and specimens.
- ★ RHODESIA 'Doubleheads', 'Admirals' and better Southern and Northern Rhodesia also modern post-UDI in quantity. Booklets and postal history/stationery especially required.
- ★ SOUTHERN AFRICA specialized — especially proofs, essays, specimen overprints and errors, SA, SWA imprint pairs and controls. Postage Dues and Officials e.g. SWA SGD13 with certificate we pay R4000; SGD17a R400; RSA First Series better FDC 1965-1973 including No. 1 and 'no tags' and varieties. SWA FDC 3 and 4. All **better** cylinder blocks, stocks of definitives, errors and varieties SA, SWA up to 1980.
- ★ POSTAL HISTORY, POSTAL STATIONERY, POSTCARDS etc. WORLDWIDE.
- ★ BOOKLETS OF THE WORLD UP TO 1972.
- ★ THEMATIC SETS WORLDWIDE especially 'Bird' sets complete in quantity.
- ★ TRANSVAAL and OFS stamps overprinted 'CSAR' and NATAL perforated 'NGR' singles, sets, multiples mint and used and errors. Collections and covers and all Railway material.
- ★ MODERN SETS also needed. For **perfect unmounted mint** (up to 500 of each) we pay for the following, for example:-

RHODESIA

1967 2/6d/25c Dual Currency (1) R42 each
 1969 Railways set R10 each
 1971 Bird set R14 each
 1972 Rhophil sheets (3) R3 set
 1977 Bird set R1,20 each

BOTSWANA

1967 Bird set R20 each
 1978 Bird set R9,50 each

SOUTH WEST AFRICA

1974 Bird set R15 each
 1975 Bird set R8 each

Homeland Bird sets also required especially 1983/1985 period.

- ★ **SEND ANY MATERIAL BY SECURITY PACKED REGISTERED POST TO**



ROBERTSONS

P.O. Box 3527, Durban 4000
 Phones: (031) 3041817 or 3046000*
 (*24 HOUR ANSWERING SERVICE)



Or call personally at

501 (5th FLOOR) 320 WEST STREET, DURBAN
 PLENTY OF PARKING AT PINE PARKADE BEHIND OUR BUILDING!



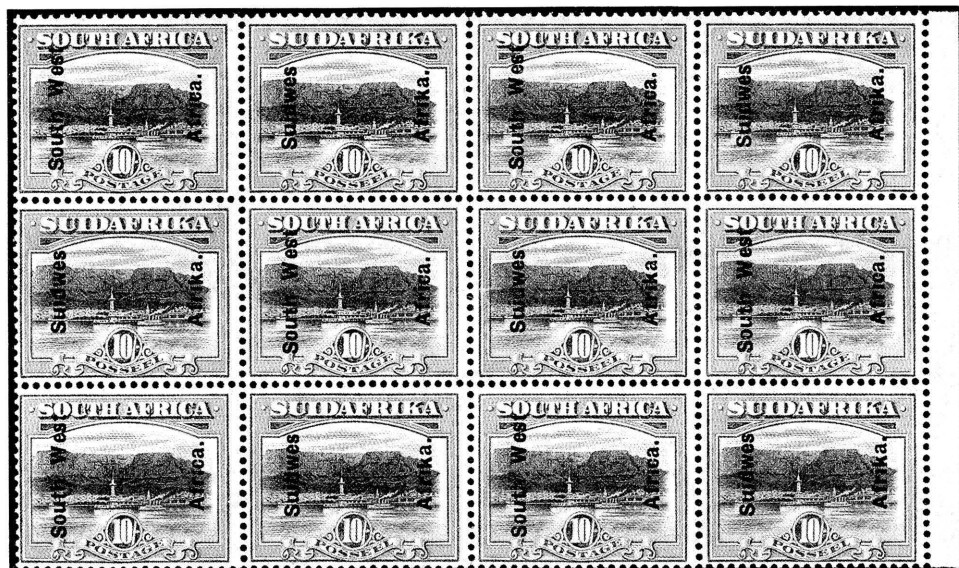
STANLEY GIBBONS (PTY) LTD

"ALL WORLD" AUCTION 31st October

Catalogues are now available for the auction to be held at the Sunnyside Hotel in Johannesburg. Included will be over 1100 lots with strong sections of Cayman Islands, Newfoundland, South Africa and South West Africa plus a good variety of single stamps and sets, collections and postal history.

Viewing for the sale will be in Durban (23rd October) Cape Town (24/25th) and Johannesburg (26, 28/29 and 31st). Contact our office **now** for further details.

Annual subscription for our auction catalogues is only R14 including postage (R18 overseas).



STANLEY GIBBONS (PTY) LTD.

308 Provincial Building Society Building,
98 Market Street,
Johannesburg 2001.

PO Box 62074,
Marshalltown 2107.
Tel: (011) 834-7616