

# The South African Philatelist

*All about stamps*



THE JOURNAL OF THE PHILATELIC FEDERATION OF SOUTH AFRICA SINCE 1932

volume 92:3. 936

[www.stamps.org.za](http://www.stamps.org.za)



A Newly Discovered Mulready Caricature



SWA Revenue Overprints



Bechuanaland:  
1961 Postage Due Surcharges



Collect Nyassa Company Stamps



A Ticket to Ride





**Important Natal on [www.filat.ch](http://www.filat.ch)**

**What have you been missing?**



# Filat AG

*Always Free Shipping... Also to South Africa!*

# Contents

June 2016 | Vol 92 | Number 3 | Whole No 936

The Journal of the Philatelic Federation of South Africa  
www.stamps.org.za

Awards:

- o Large Silver Hafnia 1994,
- o Silver Bronze Pacific 1997,
- o Vermeil APS Stampshow 1999,
- o Large Silver Egoli 2001,
- o Federation Plaque 2004,
- o Silver España'06, Literature Award 2006,
- o Large Silver NZ Literature Exhib 2007,
- o Large Silver JAKARTA 2008,
- o Large Vermeil IPHLA 2012.



78

Uganda 5/- poll tax



92 New in Thematics



97

The Gandhi Connection

## REGULARS

- 76 Letters to the Editorial Board
- 76 Closing dates for future issues
- 79 Marcophily *Phun Postmarks*
- 90 Post Office Art *UMHLALI*
- 92 Thematically yours
- 104 Society News
- 105 Errors on stamps
- 105 Classifieds
- SA New issues (None released)

## ADVERTISERS

- 74 Filat AG
- 89 Janssen Stamps
- 93 Dave Morrison
- 93 Rand Stamps Paul van Zeyl
- 96 WBHO
- 104 Faroe Islands
- 107 Sandafayre
- 108 Spink - Collectors' Series

## FEATURES

- 77 *South African Postal Rates*  
by Denise Collie and Robin Messenger
- 78 *Letter from London* by Dr JR Frank RDPSA
- 80 *Bechuanaland: 1961 Postage Due Surcharges* by Dr Lawrence Barit
- 82 *Stamps & Labels Printed by the Government Printer in Pretoria 1949 to 1961 Part 4* by Gerhard Kamffer RDPSA
- 86 *Die VOC Hospitaal by Houtbaai ontvang 'n brief...of dalk nie?*  
deur Ds Pauw Steyl RDPSA
- 88 *The Railway Strike, January 1914*  
by Jim Findlay RDPSA
- 93 *Book Review* by Andrew Fischer
- 94 *A Newly Discovered Mulready Caricature* by Dr Rob McLennan-Smith
- 97 *The Gandhi Connection*  
by Chris Mobsby RDPSA FRPSL RNCP
- 98 *Collect Nyassa Company Stamps*  
by Andrew Fischer
- 100 *Ticket to Ride* by Alan Drysdall & Fernando Torres

**Post Office**   
We deliver, whatever it takes.

A SPECIAL MENTION AND 'THANKS' TO THE SOUTH AFRICAN POST OFFICE FOR THE COMPLIMENTARY MAILING OF THIS ISSUE TO LOCAL READERS. WE APPRECIATE THEIR SUPPORT.

### THE EDITORIAL BOARD

Alan Rose: roses@wol.co.za

David Wigston: wigstdj@unisa.ac.za

Moiria Bleazard: bleazard@telkomsa.net

Robin Messenger: messenger.robin@gmail.com

Janice Botes Production Editor: janice@gdb.co.za

Emil Minnaar RDPSA Advertising: emil@minnaar.org

Peter van der Molen RDPSA, FRPSL: molens@pixie.co.za

### EDITORIAL CONSULTANTS

Alex Visser : alex.visser@up.ac.za

Chris Mobsby RDPSA, FRPSL: mobsbyc@mweb.co.za

Michael Wigmore RDPSA: dcrocker@lando.co.za

Gerhard Kamffer RDPSA: kamffer@netactive.co.za

### FEDERATION SECRETARY

Jill Redmond RDPSA: pfsasec@mweb.co.za.

Tel: +27 (0) 11 917 5304



## A minor point of criticism

I read with interest Andrew Fischer's revue (on page 42 of the April 2016 edition of *The SA Philatelist*) of the recent publication by Xavier Laubscher of a catalogue of the revenue and penalty stamps of the Homelands.

Without having seen the publication in question, I do agree that it might have been enhanced by the use of colour printing for the illustrations, particularly in this day and age when, or so I am informed, colour is not significantly more expensive than black and white.

I do, however, take issue with Andrew's contention that Revenue Stamps are not Cinderellas. The definition provided by the Cinderella Stamp Club of London states, in effect, that anything that looks like a postage stamp but was not issued for postal purposes shall be deemed to be a Cinderella. Thus, revenues and penalty

stamps would certainly qualify for inclusion in the category and, in fact, the quarterly journal of the Cinderella Stamp Club has in the past devoted considerable space to articles on revenues. The late Francis Kiddle, who was, in his day, surely the doyen of modern Cinderella philatelists, went so far as to say that "If it is not in Stanley Gibbons, it is a Cinderella" although he did concede that there were exceptions such as the lone 10-cents issue of Tierra del Fuego of 1891 and (I would add) the 1-skilling of Copenhagen of 1856 which, although undoubtedly of only local validity, do both appear in the illustrious Gibbons catalogue. One further, albeit minor point of criticism: the relevant word on the title page of the catalogue should be Cinderellas and not Cinderella's, that is to say without the apostrophe.

Chris Mobsby.



## Theft!

On behalf of all stamp collectors in this country I would like to thank the individuals of **The South African Post Office** who steal the contents of our incoming mail and then stick it closed and deliver it empty. You have stuck to your word that you will deliver what it takes. But why take what needs to be delivered? With all the issues around us, why take the joy of a happy Stamp Community and destroy it through THEFT.

Clinton Goslin



## A meeting of the minds



The Group Chief Executive Officer of the South African Post Office, Mr. Mark Barnes and some of his Group Executive members, paid a visit to 11 Field Postal Unit, a Reserve unit in Pretoria. The Director Army Reserves, Brig Gen Gerhard Kamffer, briefed him on the role and functions of the FPU in the Democratic Republic of Congo and Sudan. 11 FPU is governed by the Postal Services Act.

Seated in front from left to right: Maj Gen Lorenz Smith (Deputy C Army), Mark Barnes and Brig Gen Gerhard Kamffer (D Army Res). The person standing fourth from the left in the back row is Mr. Twigg Xiphu, Group Executive: Public Affairs, who is also in control of the Post Office museum.

Gerhard Kamffer is a regular contributor to *The SA Philatelist*.

### Editorial Board's choice Winning Contributor

This issue's award of PILOT pen goes to Dr Rob McLennan-Smith for his article: 'A Newly Discovered Mulready Caricature'

- The SA Philatelist Publication  
Closing dates for final submission and advertising material to avoid late delivery
- **August** 2016 issue  
Vol. 92: 4. 937 : 07/07/2016
  - **October** 2016 issue  
Vol. 92: 5. 938 : 05/09/2016
  - **December** 2016 issue  
Vol. 92: 6. 939 : 08/11/2016
  - **February** 2017 issue  
Vol. 93: 1. 940 : 09/01/2017

### PLEASE NOTE:

**Enquiries** regarding subscriptions and membership can be referred to Jill Redmond RDPSA at [pfsasec@mweb.co.za](mailto:pfsasec@mweb.co.za) Tel: +27 (0)11 917 5304

**Contributions and letters** for the publication must be forwarded to the Editorial Board *The SA Philatelist*, PO Box 131600, Benoryn, 1504, South Africa or email: [saphilatelist@iafrica.com](mailto:saphilatelist@iafrica.com)

### DISCLAIMER:

*The views expressed in this publication do not necessarily represent those of the Philatelic Federation of South Africa.*

*While every effort is made to ensure accuracy and honesty in the editorial columns of this magazine, the publisher and editor cannot be held responsible for inaccurate information supplied and consequently published.*

*Publication of articles is subject to availability of space and cannot be guaranteed in each edition. Copyright for material published in this magazine is strictly reserved.*

### EDITORIAL POLICY:

*The Editorial Board reserves the right to accept or decline any articles, letters or any other material submitted for publication, and reserves the right to effect minor changes of spelling, punctuation, grammar and word choice without requesting prior permission from the author(s). For more substantial revisions, such as shortening or restructuring, either the Board will request the author(s) to effect such changes or will propose amendments to the author prior to publication - if no agreement can be reached then publication will be declined.*

**Subscription and circulation:** The annual subscription rate for 2016 in South Africa is R276.00. SADC countries, the subscription is R504.00 per year. International overseas, the subscription is R684.00. These prices all include postage via airmail.

Should you have enquiries or wish to subscribe, please communicate with the Membership Secretary/ Subscriptions Manager: P O Box 9248, Cinda Park 1463. email: [pfsasec@mweb.co.za](mailto:pfsasec@mweb.co.za) Tel: +27 (0) 11 917 5304

**Advertising:** Rates available from the Advertising Manager, PO Box 131600, Benoryn, 1504. email: [saphilatelist@iafrica.com](mailto:saphilatelist@iafrica.com)

**Publication:** This journal is published by **The Philatelic Federation of South Africa**. Jill Redmond RDPSA, is the Secretary. P O Box 9248, Cinda Park 1463. email: [pfsasec@mweb.co.za](mailto:pfsasec@mweb.co.za) Tel: +27 (0) 11 917 5304

**Production & layout:** J Botes Design Concepts

# POSTAL RATES

comment by Denise Collie, Witwatersrand PS



## The Postage Rates of South Africa from 1910 - 31 March 2017, Internal Rates and External Rates.

These have been updated and will soon be available on the Philatelic Federation webpage.

The original work has been updated on a regular basis, with additions and corrections shown in colour: first amendment in RED for 2013/2014, second amendment in YELLOW for 2014/2015 and third in GREEN for 2016/2017. Hopefully this will enable those using the site to see immediately where something has been added or changed.

As new information is received it is collated and added each time Postage Rates are changed. As users, we need

to garner information from anyone who has the expertise in their own field of knowledge – it is obviously impossible for anyone to have all the knowledge; gaps are indicated by 'blanks' which need to be filled over time. The site is secure so no-one can add or remove info from the page. New information for insertion is most welcome and can be sent to me at [donsden3@gmail.com](mailto:donsden3@gmail.com)

Please note that users may print off their own copies of the pages but need to adjust the pages to their own printers. This is so that the pages (each separately headed) can be easily read and used depending on which period and print-size are required. The Postage Rates for 2016/2017 are also available on the Post Office website:

[www.gpwnonline.co.za](http://www.gpwnonline.co.za)

# POSTAL RATES

VALID FROM 1 APRIL 2016

review by Robin Messenger  
South African Stamp Study Circle



DOMESTIC	New Rate	Old Rate	Increase
Letter	R c	R c	%
Small DL	3.60	3.30	9.09
Medium B5	7.15	6.55	9.16
Large B4	8.75	8.00	9.38

**Postcards:** Same rates as letters.

**Registered letters,** with insurance option.

Compensation up to R100.00 at no additional fee. Insurance for higher amounts is available for an additional fee based on a sliding scale. The maximum insured value is R2,000.00 for which the fee is now R142.80 (previously R130.90, an increase of 9.09 %).

Small DL - (3.60 + 21.40)	25.00	22.90	9.17
Medium B5- (7.15 + 21.40)	28.55	26.15	9.18
Large B4 - (8.75 + 21.35)	30.10	27.60	9.06

## INTERNATIONAL

Registration fee	33.80	31.00	9.03
------------------	-------	-------	------

There is no insurance option for international registered post.

Aerogrammes	5.35	4.90	9.18
Postcards – Airmail	7.25	6.65	9.02
Postcards – Surface	4.40	3.95	11.39

## Airmail letters – Southern Africa

Small DL	6.50	5.95	9.24
Medium B5	23.60	21.65	9.01
Large B4	36.70	33.65	9.06
Small packets (per 100 g)	20.80	19.05	9.19

## Airmail letters – Rest of the world

Small DL	8.40	7.70	9.01
Medium B5	28.55	26.15	9.18
Large B4	48.40	44.35	9.13
Small packets (per 100 g)	36.60	33.55	9.09

New rates taken from *The Government Gazette*, Vol. 607, No. 39637 (29 January 2016).

## GUESS THE STAMP

Try your hand at identifying this pixelated\* image

WHAT IS THIS?



as



**Winner of the APRIL 2016 challenge:**  
Louise Browne of the Hibiscus Coast Philatelic Society, identified the stamp as the 1995 60c Rugby player showing the worldcup trophy. SACC no 901.

\*an image - filtered so that the viewer sees the individual pixels that form the image, which is stylised, having reached the point at which no further detail can be resolved.

Guess correctly - send your answer to the Editorial Board and you stand to WIN a stationery hamper!  
Send your answer to [janice@gdb.co.za](mailto:janice@gdb.co.za) by 12 July 2016

## BOFEX The Bloemfontein One Frame Virtual Exhibition

22 – 23 July 2016 - FRIDAY and SATURDAY

This VIRTUAL exhibition is in lieu of the One Frame Class normally offered at the National Exhibition – this class will therefore not be offered at the SADAPEX 2016 Exhibition. It will be held under the auspices of

The Philatelic Federation of South Africa and hosted by the Philatelic Society of the Orange Free State

with the support of **SAPDA - South African Philatelic Dealers Association**

## SAPDAPEX 2016

National Philatelic Exhibition

13 - 16 OCTOBER 2016



The SADAPEX 2016 Exhibition is being held from the 13 to the 16 October at the ITALIAN SPORTS CLUB, 7 Marais Road, Bedfordview, Gauteng. The following philatelists have accepted appointments for the SADAPEX 2016 Jury:

- Chairman: Emil Minnaar RDPSA; • Vice-Chairman: Neil Cronjé, RDPSA; • Secretary: Jan van Beukering;
- Jury: David Parsons; Gerald Bodily; Anne Marie Wigmore, Emil Bührmann RDPSA; Gerhard Kamffer RDPSA; Michael Wigmore RDPSA; Patrick Flanagan RDPSA; Ian Matheson RDPSA; and Andrew Fischer.
- Apprentices: Alan Melville (2<sup>nd</sup> Term); Lourens Erasmus (2<sup>nd</sup> Term) and Jim Findlay RDPSA (1<sup>st</sup> Term).

Henk de Lange - Consultant.

## LETTER FROM LONDON

Dr J.R. Frank RDPSA FRPSL, Philatelic Society of Johannesburg



The passing, in October 2015, of Francis Kiddle RDP, Hon. FRPSL is a sad loss to philately. An outstanding philatelist, postal historian, international philatelic juror and organiser, he was also a modest, friendly and helpful person. In spite of the manifold duties he performed he still managed to keep abreast with the philatelic literature. He invariably gave me feedback on my *SAP* contributions. He will be missed in many spheres of philately.

The Royal Philatelic Society London once again had an impressive programme. October brought a display by The Revenue Society, which covered British, Commonwealth and World material. This ranged from John Scott's 'French Revenue stamps, 1673-1690' to Christopher Podger's 'Cyprus Revenues to 2013'. John and Mark Taylor presented a comprehensive display of 'Transvaal 1878 Revenues', the highlight being a three-colour franking on a document. Taddeo Papi showed the Uganda King George VI 1940, 5 shillings Poll Tax stamp, (Fig.1) a unique item discovered in 2014. This caused considerable comment.

The 'Falklands Islands Postal History' exhibit of Mike Roberts in November included some spectacular postal history, such as the first recorded letter written in 1800. Pre-stamp letters to and from the islands were shown, as were the 'Black Frank' and 'Red Frank', foreign and internal mails, and also maritime mails, Operation Tabarin (in 1944) and the airmails. A cover from the Swedish Magellanian Expedition 1907-1909 was new to me.

A display by the members of the East Midlands Region was interesting and varied. Brian Moorhouse's two frames of 'Tierra Del Fuego -The 1891 Postage Stamp' were spectacular, as only one stamp was involved. Proofs, multiples, varieties and postmarks were shown, while all eight recorded examples on cover or part cover were included in the exhibit (one is shown in Fig.2).

The 'GB Queen Victoria Two Pence Blue Issues 1840-1879' also provided many items of interest.

Akis Christou's 'Cyprus 1880-1896' display in February 2016 contained examples of the rare plates of ½d and 1d GB values overprinted 'Cyprus' and rare postal history material. A mint example of the 1d Plate 184 and missing and double overprints on Plate 208 caught the eye. Lovely covers of all values were shown.

The Auction scene had a break over Christmas although Spink sold the final portion of the Wannerton 'Canadian Contingents'

collection in November 2015. The same firm auctioned the Vestey Collection of Bermuda in December. The 1855 Hamilton Perot 1d on bluish paper on cover realised £80,000, a bit below its lower estimate. The largest recorded multiple, a mint block of six, of 'Three Pence' with plain P on 1d rose-red made £40,000, against a lower estimate of £50,000. The lovely 1921 composite essay by Dale realised £4,000.

Grosvenor Auctions sold the remarkable collection of Cinderella material of the Kiddle Brothers in February. The diversity of the material and its analysis were outstanding.

Hot off the press, is the March Argyll-Etkin Sale, which featured a remarkable collection of Portuguese Nyassa. I am not aware of a similar sale in the United Kingdom or U.S.A. An array of scarce covers brought lively competition. A 1903 cover bearing a strip of three 10r. stamps with inverted centres realised £2,100, against an upper estimate of £1,200. The stamps had been sent



Fig.1

out to Nyassa by a London dealer, affixed to the cover and returned to him through the mails. Strictly speaking a 'fabricated cover', but popular nevertheless. A 1914 registered cover from Lago District, Mozambique, with a colourful franking and estimated at £300 realised £1,100 while a set of 1921 Die Proofs exceeded double at its estimate at £1,200. Of South African interest was a lot of 39 covers and cards written by South African Air Force personnel in Korea in 1951 - 53. Although in variable condition the lot fetched £500 against a £350 estimate. The buyer's premium is 21%.

Spring Stampex 2016 once again proved a popular event. Good quality material was available at a price. For instance, a superb 1841 cover bearing a block of four G.B. 2d blues and a clear London Ship Letter strike,

addressed to Thomas Maclear at Cape Town, was certainly not a 'snip' at £59,000!

The exhibits this time were superlative. Gems of philately were on show in the innovative 'Seven Nations Challenge', which had been 'pioneered' in Australia and Sweden. It consisted of four eight-frame exhibits from each of Great Britain, U.S.A., Australia, Denmark, Germany, Sweden and Belgium, irrespective of category. The exhibits were judged individually and the scores combined per country. The winners were the United Kingdom, who won by one point from Denmark, with Germany third. The exhibits were all of International Gold standard or better, which made them a feast for the 'Classics' collector with a taste for postal history. An incredible exhibit of the Squared Skilling Stamps of Denmark, another of Classic Switzerland and one of the 1847 issue of U.S.A. were philately at its best. Postal history included British Secure delivery, with material from 1201-1862, St. Helena 1677-1903 and Private Ship Letter Companies to 1900. Thematic collections of 'Monastic Life', 'Fisheries' and 'The History of Chemistry' were an eye-opener.

Yet the National Competition was not forgotten. Joseph Hackmey entered exhibits which included several 'world rarities'. The Baden exhibit featured the 9Kr error of colour in green of which three examples have been recorded (Williams Brothers) and was backed up by a marvellous array of covers. His exhibit of New South Wales was equally impressive and included the 1851 2d Sydney View tête-bêche pair on cover, discovered in 1903 and still the only one recorded. His Queensland exhibit opened with a selection of N.S.W. issues on covers used in the former and a contemporary one from Norfolk Island.

The Royal Philatelic Society, London will celebrate its 150<sup>th</sup> anniversary in 2019. Besides local events, including a dinner in April, the major commemoration will be 'Stockholmia 2019'. This will be a 2,000 frame exhibition for Royal members world-wide, without pre-qualification.

In addition, 'London 2020' is already being organised. This exhibition will again be held at the Business Design Centre, Islington, from 2-9 May 2020. The exhibits will be changed half-way through the exhibition, which will enable more exhibitors to be accommodated.

Best Wishes,

JRF



Fig.2: 17 April 1891, Incoming cover to Punto Arenas with added 10c paying the onward delivery fee to the mining camp at San Sebastian, Tierra del Fuego.

# Phun with postmarks

by Alex Visser, Pretoria Philatelic Society

Email: alex.visser@up.ac.za



## Registration Labels of Swaziland

The comprehensive 'Swaziland Philately to 1968' edited by Peter van der Molen RDPSA, FRPSL lists all the recorded registration cachets (Fig.1 shows an example of Bremersdorp R4 – number as per book) in Chapter 15. Printed registration labels are however not recorded. These labels are a niche area in philately which could be called 'Post Office Stationery', i.e. all the forms etc used by a Postal Administration to assist them in operating their business. Pre-numbered Registration Labels were probably introduced to speed up the work of the postal clerk, and the ones used in Swaziland (Fig.2) are the same type as were used by the Union Post Office in South Africa (in my collection the earliest Union date is 1941 at the larger post offices). That can be explained by the fact that the Union Post Office also operated the Swaziland Postal system up to 31 December 1953 (Swazi handbook p.313). After control of the Swaziland postal system was transferred to the Swaziland Post Office, the available supplies of these labels were probably used up in Swaziland and once exhausted, would have been replaced by rubber stamps which could be manufactured locally and were used prior and subsequent to the printed labels and at the smaller offices. At the instigation of Frank Høberg of Norway this topic was researched with the assistance of Peter van der Molen and Brian Folley, and I am indebted for their contributions which are acknowledged and which give a surprising insight into the use of these labels.

The Union Post Office probably only supplied these pre-printed and numbered labels to principal offices and not to agencies. In Swaziland, the principal offices were designated as M.O., being Money Order offices which offered the full range of post office services. In Swaziland, to December 1953, the following offices had M.O. status and one would expect to find pre-printed registration labels designated with the names of those eight offices:

- Bremersdorp
- Emlembe
- Goedgegun
- Hlatikulu
- Mankaiana
- Mbabane
- Piggs Peak
- Stegi



Fig.1. Registration cachet of Bremersdorp (R4 used 1943/58).

During a search of the main collections only 45 covers with registration labels from seven post offices were found. This material is too

small to tell the whole story about the use of registration labels in Swaziland, but it can give us some indication.

Post office	Env. with label	Earliest date	Latest date	Use of reg. cachet in the period when labels were used.
Bremersdorp	8	19501031	19600510	R4 used in 1953/8.
Emlembe	11	19510504	19640227	No use of reg. cachets in the period.
Goedgegun	3	19500613	19610815	No use of reg. cachets in the period.
Hlatikulu	11	19500913	19560702	One R4 used in 1955.
Mbabane	5	19510113	19580702	At least five covers with reg. cachet: R3: 1, R4: 2 & R7:2. All in the period 1951/53.
Piggs Peak	5	19480811	19560702	No use of reg. cachets in the period.
Stegi	2	19520807	19540317	(Very few reg. covers from Stegi)
Total	45	19480811	19640227	

From this limited group of registered covers it seems as if registration labels were taken into use in 1948 (or possibly earlier), and were still in use in 1964. At most offices, except for Mbabane, only registration labels were used in the period indicated and show that the registration cachets were used over a much shorter period than originally anticipated. Note that Mankaiana labels have not been recorded from the list of M.O. offices, and

2.5 mm. The numbers seem always to be around 4.0 mm. Figure 2 shows the different types that have been found, together with the actual dates the cover was posted.

The two different types of Hlatikulu labels are interesting. One has a number after the office name and probably signifies the different counters and the extent of business. Similar counter numbers would have been expected for Mbabane, but have not been seen.

Readers are encouraged to provide material from their collections so that the picture can be completed. Information may be sent to my email address and scans in jpeg format at 300 dpi.



Fig. 2: Different registration labels recorded for Swaziland with date of use.

this is something to search for. Besides the labels on cover, loose labels were recorded by Foley for Emlembe (one of each of two types), Mbabane (1) and Piggs Peak (2).

The size and look of the labels are much the same for all the post offices. The main rectangle is about 38 x 15 mm. The letters used in the name are either 2.0 mm or

Wie het kon droom dat registrasie-etiket van Swaziland uiters skaars is? Dit was eers toe die beskikbare materiaal bymekaar gesit is dat die volledige prentjie na vore gekom het. Bydraes van lesers oor verdere inligting sal verwelkom word.

# BECHUANALAND: 1961 POSTAGE DUE SURCHARGES

by Dr Lawrence Barit, Witwatersrand Philatelic Society



## Introduction

On 14 February 1961, Bechuanaland issued stamps surcharged with new currency values, which included three values of Postage Due stamps. The surcharging was the result of Bechuanaland following the South African conversion of its monetary system, also used in Bechuanaland, from the Sterling to the decimal Rand currency basis.

## The Sterling Denominated Postage Dues

These key-type designs were printed by Thos. De La Rue & Co Ltd. in England from 1932 onwards, by letterpress using a 'frame plate' with the territory's name, and a 'duty' plate for each duty, which was also used for other territories. For Bechuanaland, shown in Fig.1 they comprised values of ½d, 1d and 2d, printed respectively in sage-green, carmine and violet on 'ordinary' (i.e. not surface treated) CA watermarked paper. A later issue, in November 1958, for the 1d and 2d values was printed on a 'chalk-surfaced' paper, introduced to improve printability and which has a more white appearance. However, the ½d stamp was never printed on 'chalk-surfaced' paper – for that value specialist collectors distinguish between the earlier smooth uncoated paper and the later wartime rough textured uncoated paper. The three values were always printed in sheets of 60 stamps, in a 6 across by 10 down format.

## The Type I Surcharges

The three duties of Bechuanaland surcharged Postage Due stamps were issued with '1c on 1d', '2c on 2d' and '5c on ½d' as shown in Fig. 2. All were surcharged with an 18 point Tempo Bold typeface by the South African Government Printer in Pretoria, and this surcharge became designated as Type I.

These surcharges were applied to the stock of stamps held by the Controller of Stores at the Post Office in Pretoria, on behalf of the Bechuanaland Administration. These stamps would have been the most recently received from printers De La Rue and whilst the ½d stamps were all of the early 'ordinary' paper printings, the 1d and 2d stamps would have been all printed on the more recent 'chalk-surfaced' paper. In fact no '1c on 1d' and '2c on 2d' surcharged with Type I have been recorded on 'ordinary' paper and any which claim to be so should be examined very carefully for forgery.

## Quantities surcharged with Type I:

- 1c on 1d – 18,000 stamps (300 sheets). A double surcharge, of which one was 'albino', is known.
- 2c on 2d – 24,000 stamps (400 sheets).
- 5c on ½d – 26,820 stamps (447 sheets).



Fig.1: The Sterling set



Fig. 2: The Type I Surcharges



Fig.3: The Type II Surcharges

## The Type II Surcharges

With the Type I surcharges soon sold out, mainly due to philatelic demand, basic stamps were recalled from the Crown Agents' Stamp Bureau in London and from post offices in the territory, and were surcharged but now with a larger typeface: 30 point Tempo Bold which was designated Type II. This typeface was only applied to the basic 1d and 2d Postage Due Stamps shown in Fig.3 since no significant quantities of the ½d were found to be available and none were further surcharged.

In the returns from Bechuanaland post offices there were some sheets of the earlier issues printed on 'ordinary' paper and those were also surcharged, so now the Type II surcharges were available on both 'ordinary' and 'chalk-surfaced' paper.

## Quantities surcharged with Type II:

- 1c on 1d – 57,600 stamps (960 sheets).

A 'first' printing of the surcharge has been recorded on 110 sheets, where the horizontal pitch of the surcharges is slightly less than the original pitch of the stamps, shown in Fig.4.



Fig.4: Strip of 6 – 1c on 1d Type II

In a 'second' printing (on 850 sheets) the horizontal pitch error was 'over-corrected' and is now slightly more than the pitch of the stamps. These discrepancies cannot be seen on single copies or small horizontal multiples – ideally a full horizontal strip of 6 stamps is required for proper identification.

- 2c on 2d – 58,140 stamps (969 sheets). Similar to the case of the 1c Type II on 1d surcharge, a 'first' printing has been recorded on 105 sheets where the horizontal pitch of the surcharges is less than the original pitch of the stamps; in a second printing of 864

sheets the horizontal pitch of the surcharge settings is slightly wider than the pitch of the stamps. A very detailed study on these printings was published in *The S.A. Philatelist* in 1964 by Howard Criddle.

There were no quantities recorded of 'ordinary' and 'chalk-surfaced' papers sheets of stamps that were surcharged with Type II surcharges, but the 'ordinary' paper quantities are believed to have been very small, which is proven by their scarcity and higher catalogue values.

## The Major Error

A full sheet of 60 stamps of 1c Type II surcharged on 1d on chalk-surfaced paper, with double surcharge, was found at the Lobatsi Post Office. That sheet then came into the hands of The Robertson Stamp Company, which at that time traded from the Old Arcade in the centre of Johannesburg, just off Rissik Street. The discovery caused quite some excitement and it is believed that one of the two Robertsons, who ran the philatelic store, drove to Bechuanaland to collect the sheet. It was immediately split and sold off; the original price asked for a single copy was £14. The enlargement shown in Fig.5 clearly illustrates the double surcharge where both impressions are clear but are quite close together. Fig.6 illustrates the lower RH corner B4 with this error, which is believed to be the largest multiple remaining following the splitting of the sheet.

## Other Error

In the 2c Type II surcharge Second Printing on the 2d Chalk surfaced paper, on some

sheets a printing intrusion has



Fig. 5: Enlargement of double overprint



Fig. 6: Block of four of double overprint. Ex the collection of Peter van der Molen

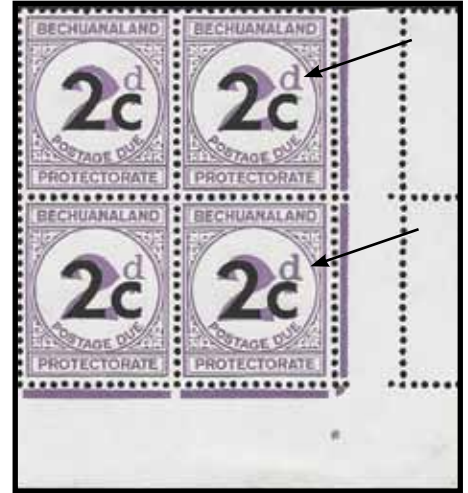


Fig. 10: Large 'd' on right hand side stamps

been noted, thought to be caused by a loose 'packing bar' in the surcharging forme, as shown in Fig.7. A similar intrusion print is also known in the RH sheet margin of the same surcharges.

#### Varieties

(a) In the Type I surcharges, there is only a minor variety in the surcharge of '5c' on the 1/2d stamp, where at top left in the '5' the corner has been damaged, which occurs in position R3,1 and is shown in Fig.8.



Fig. 8: Damage to '5'

(b) On the 1c on 1d Type II, First Printing, Fig.9 shows two varieties in the surcharge. In R3,6 the 'c' is distinctly smaller than the others, and in R6,6 there is a 'broken c'. These varieties did not appear on the Second Printing indicating that the surcharging setting had been redone. These varieties are not listed by Gibbons but the author feels that, being quite distinctive, they should be.



Fig. 7: Type II showing central packing bar

(c) In the basic '1d' stamps, there are no varieties for the 1c Type I surcharge. For the 1c Type II surcharge, there is the distinction of 'ordinary' and 'chalk surfaced' papers listed in Gibbons.

(d) In the basic '2d' stamps on the 'chalk-coated paper, with the 2c Type I and Type II surcharges, there are two varieties listed, being 'Large d' which occurs in R9,6 and R10,6 as shown in Fig.10, and the 'Serif on d' shown in Fig.11, which occurred in R1,6.



Fig. 9: At right, 1c on 1d Type I column 6 vertical stamps

For the basic '2d' stamp on 'Ordinary paper', the 'Large d' is only listed with the Type II surcharge - this has the highest catalogue value of these postage due decimal surcharges at £800 per stamp, because the earlier printings of the basic stamp on ordinary paper were made with a duty plate which did not have that variety.

#### Definitive Decimal Postage Due Issue

These were issued on 15 November 1961 and are shown in Fig.13. The decimal surcharged Postage Dues therefore served for nine months, but few appear to have been used for their designated purpose since genuine use on cover is hardly known.



Fig. 13: Decimal Postage Due issue

#### Surcharge position

A number of placing varieties with respect to the positioning of the surcharge on these postage due stamps exist. However, they are not and cannot be regarded as errors since they resulted from the original trim of the sheets being not identical. Hence, when being surcharged, the sheets would be overprinted in relation to the trim size of the sheets. Fig.12 illustrates such varieties.

#### Summing-up

The study of these decimal surcharged Postage Due stamps is an interesting albeit rather specialised philatelic subject. Not only is there the element of different surcharge types but there is also the aspect of different papers used for the basic stamps, together with varieties on those basic stamps. In the surcharges, there are different settings with some varieties and a major error of a double surcharge.



Fig. 11: Serif on 'd'.



Fig. 12: Misplaced Type II surcharges.

#### References

- Bullivant, P.N.: *The Shelley Catalogue of the Decimal Surcharges of Basutoland, Bechuanaland and Swaziland*, Stamp Collecting Ltd, London Nov 1962.
- Frescura, Franco: *The Provisional Decimal Overprints of Bechuanaland, ca. 1980*, intended for, but not published, in the Robemark Catalogue which published his corresponding articles on Basutoland and Swaziland.
- Stanley Gibbons: *Commonwealth Stamp Catalogue Southern and Central Africa*. 2<sup>nd</sup> Edition 2014 London.
- van der Molen, Peter: unpublished copies of his 1961 Decimal Surcharge Exhibits.
- Criddle, Howard: *SAP 1964*, p5, p74 and pp 92-94.

## Types of Stamps and Labels Printed, Overprinted and Surcharged by the Government Printer in Pretoria over the Period 1949 to 1961

by Dr Gerhard Kamffer RDPSA, Pretoria Philatelic Society

### Part 4: Stamps and postal stationery printed and overprinted for South West Africa (SWA)

#### Introduction

Shortly after the outbreak of WWI in 1914, Luderitz and Swakopmund in German South West Africa were occupied by the Union Defence Forces and later, in April 1915, a general converging movement from these points, as well as from the Union border commenced. On 9 July 1915 the German Army surrendered and the administration of the country was taken over by the Union of South Africa, which established a military regime.

In terms of Article 22 of the Treaty of Versailles the Government of the Union of South Africa was entrusted with the Mandate in respect of the territory formerly known as German South West Africa. On 12 September 1919 the Union House of Assembly formally accepted the mandate, and the Governor-General was given power to make appointments, establish offices and issue proclamations. Martial law rule continued until 21 January 1921 when the powers, vested in the Governor-General were delegated to the Administrator of the territory, Col. The Hon P.I. Hoogenhout. By the Union Act No. 42 of 1925, which came into operation on 5 August 1925, provision was made for the constitution of an Executive Committee, an Advisory Council and a Legislative Assembly for the territory.

All these arrangements had an impact on the postal system of the territory opening up a very interesting field of collecting for philatelists. Only a selection of various items printed and overprinted by the Government Printer in Pretoria over the period 1949 to 1961 for SWA will be illustrated in this article.

#### The establishment of the South West African Department of Posts, Telegraphs and Telephone Communications.

This Department was organised as a separate Department from 1 August 1915. Departmental tariffs and procedures followed those of the Post Office of the Union of South Africa as closely as circumstances permitted. The laws relating to posts, telegraphs and telephones were consolidated by the Post Office Administration Proclamation (No. 15 of 1931). The administration and control of the department was vested in the Director of Posts and Telegraphs, subject to the authority of the Administrator. Major J.P.A. van Aswegen was appointed as the first Director. The principal post office tariffs were published in the telephone directory, and were identical to the tariffs of the Union Post Office for letters, post cards, newspapers,

registration fees, and money and postal order commission.

#### Postage stamps

From 1922 the SA Government Printer began overprinting postage stamps for South West Africa by letterpress. Until 1952 many Union stamps had been overprinted 'SWA'. For this purpose the basic stamps had already been cut into sheets so that they could be used for overprinting on a flat-bed printing press. There was however one exception namely the three Voortrekker stamps of the 1949 issue which were overprinted with



Fig.1: The 1/- duty of the SWA Queen Elizabeth II Coronation issue printed in screened gravure on the Goebel 830 by the Government Printer in Pretoria in sheets of 120 stamps separated into two panes of 10 rows of 6 with a gutter between them.

'SWA' along with the normal printing of the series on the rotogravure-press from the new cylinder (No. 6933).

The various printings and overprints done by the Government Printer in Pretoria for SWA were also regularly announced in *The South African Philatelist (SAP)*. The first announcement was about the fact that the Voortrekker Monument issues would be for sale from 1 December 1949 and that stamps of the Union would be overprinted 'S W A'. It was also announced that the Director of Posts and Telegraphs in

Windhoek would service 'First-Day' Covers.

It was announced in the *SAP* of January 1950 that the Voortrekker Monument Commemorative stamps in use in SWA during the same period as those in the Union, were of particular interest based on the fact that this was the first occasion the letters 'S W A' were overprinted by the rotogravure process. In previous overprinted issues, which included the recently overprinted UPU series, the overprint was produced on a flat bed machine. In comparing this overprint with that of the Voortrekker commemoratives, there will be seen, in the case of the latter, a distinct irregular grained appearance of the letters 'S W A' and the complete absence of any indentation on the back of the stamps.

In the case of the Voortrekker stamps 8,200 sheets of the 1d, 10,173 sheets of the 1½d, and 7,100 sheets of the 3d drawn from the PMG's stocks were overprinted 'S.W.A.' from the new cylinder, no. 6933.

After this printing the Van Riebeeck stamps were overprinted 'SWA' on a flat bed machine from New Process Blocks on 25 March 1952. An examination of the back of these stamps will clearly show the indentation of the letters due to the use of the letterpress process.

In 1953 the Government Printer printed five denominations for the South West African Coronation issue: 1d, 2d, 4d, 6d and 1/- (Fig.1). Each value was produced in sheets of 120 stamps from single colour cylinders and were delivered on 21 April 1953; for the 1/- value 3,276 sheets were printed. Fig.2 shows the 10/- value of the SWA 1954 definitives.



Fig. 2: Part of a sheet of the 10/- value of the SWA own 1954 Definitive Series printed in sheets of 120 stamps separated by a gutter in two panes of 10 x 6 rows. Printed in September 1954.





Fig.3: Top left corner of a sheet of 120 1d postage due stamps out of the Inventory Records of the Government Printer in Pretoria with the job number (No. 62227) and printing date (May 1959) indicated in manuscript.

**Postage Due Stamps:** The printers Bradbury Wilkinson & Co lithographed the first of South West Africa's postage due stamps with a simple design where the figure of value was in an oval with 'South West Africa' above and 'Suidwes Afrika' below. These stamps were issued in 1931. The Government Printer in Pretoria printed the same series in the smaller format of 17½ x 21mm with the springbok watermark. A total of 400 sheets were printed for the 1d value, 700 sheets for the 2d value and 272 sheets for the 3d value on 12 May 1959. These stamps were issued on 18 May 1959 (Fig. 3).

**Postal Stationery:** Various postcards, air letters and registered envelopes were overprinted 'SWA' from 1949 onwards. In March 1950 a total of 14,400 4d registered envelopes were overprinted 'SWA'. This was followed in April 1950 with a total of 7,200 6d Air Letter Cards being overprinted 'SWA'. In October 1960 the newly designed 6d air letter for SWA was printed.

As an example, in the case of 1d pictorial post cards, a total of 38,400 cards were delivered on 3 June 1952 printed in sheets of 32 (Job no. 30430). In terms of the 6d Air Letter Cards (Job No. 30432) 100,800 post cards overprinted 'SWA' were delivered on 6 May 1952 (Figs.12-15).

**Revenue Stamps:** The first revenue overprints for SWA were done in 1949 on the Bradbury Wilkinson series of postage stamps (Fig.4). Thereafter all the different revenue series of stamps for the Union of South Africa issued over the period 1949 to 1961 were overprinted: Series 5 (1946-1952), Series 6 (1954) and Series 7 (1954-1961). Very small

quantities of the high value revenue stamps were overprinted. For example in January 1954 the following number of sheets were overprinted 'SWA': 2/6 - 300 sheets x 60, 5/- 300 sheets x 60, 10/- 200 sheets x 60, £1 - 200 sheets x 60 and the £25 - 10 sheets x 60 (Figs. 4-7).

**Savings Bank Stamps:** The Post Office Savings Bank was constituted by Proclamation No. 8 of 1916. South West Africa Savings Bank accounts could be operated in the Union and vice versa. Savings Bank certificates of the value of £50 each were issued bearing interest at 3% per annum.



Fig.4: The original Bradbury Wilkinson stamps overprinted 'Inkomste' and 'Revenue' for revenue purposes by the Government Printer. Overprinted in 1949.



Fig.5: A pair from a sheet of 60 Union Revenue King George VI £25 stamps were overprinted 'SWA' in June 1955.

Savings Bank stamps (Fig.9), overprinted 'SWA' were available at all Post Offices and afforded an opportunity for savings in easy instalments for the purchase of National Savings Certificates. The stamps were affixed to a card which was procurable at all post offices, and which, when completed, could be exchanged for a National Savings Certificate. These stamps were also obtainable by Club Secretaries for the use of members of School Savings Clubs.

In 1949 Union Savings Bank stamps in the Bantam-format were overprinted 'SWA'. Bantam stamps were originally printed due to the urgent war-time necessity to conserve the available stocks of paper on which postage

stamps were printed. It is however not clear why Bantam-stamps were printed at such a late stage after the War had ended. It is possible that stocks of paper were left at the Government Printer originally meant for the Bantam issues (Fig.8).

This was followed by an overprint on the normal Union design in August 1950. In October 1953 a total of 2,499 sheets of 240 3d stamps were overprinted 'SWA' with the new block. Stamps overprinted 'SWA' on the



Fig.6: A pair of Union Queen Elizabeth 1/- revenue stamps overprinted 'SWA' by the Government Printer in February 1954.



Fig.7: A pair from a sheet of 60 Union Revenue stamps overprinted 'SWA' in June 1955.

2½c value in preparation for decimalisation were already done in 1960. In 1961 an overprint was done on the Decimal issue on 5 May 1961.

Three different fonts were used to overprint the Savings Bank stamps over the period 1950 – 1961. The same type of font for the overprints was used as for the postage stamps (Fig.9).

**Entertainment Duty:** Entertainment Duty was a Provincial Tax instituted in the Union of South Africa. This type of tax was also instituted in SWA and stamps or labels were printed for this purpose. The total income for Entertainment Tax for the years 1948-1949 in SWA was £6,571 (Fig.10).

The 3d, 4d, 6d and 1/- values of these stamps are also recorded in the J. Barefoot Catalogue

SUMMARY OF ENTERTAINMENT DUTY STAMPS  
PRINTED BY THE GOVERNMENT PRINTER FOR  
SWA FROM 1951 TO 1953

		First printing Aug 1951	Second printing May 1952	Third printing May 1953
2d	Imprint Job no:	0620 31760		
3d	Imprint Job no:	1833 31760	4530 30146	
4d	Imprint Job no:	2127 31760		
6d	Imprint Job no:	9336 31760	2837 30146	8847 32760
1/-	Imprint Job no:		6003 30146	

(2012) of *British Commonwealth Revenues*, under the heading South West Africa, with the year of issue incorrectly indicated as 1957.

**Native Tribal Levies: Stamps overprinted for the MAFUE and BASUBIA in the Eastern Caprivi Zipfel**

In 1939 the administration responsible for the Caprivi strip was officially split in two. The western Caprivi continued to be administered from Windhoek and the eastern Caprivi was the sole responsibility of the South African Minister of Native Affairs based in the South African capital, Pretoria. This was confirmed in a minute dated 4 March 1938 from the Administrator to the Prime minister of the Union, General Hertzog. Subsequent SA legislation in 1951 and 1968 continued to distinguish between laws applied to SWA and the Eastern Caprivi strip. This arrangement was based on the remoteness of the region and the fact that it was closer to Pretoria than to Windhoek.

Reisener pointed out that the Post Office in Katima Mulilo was run by local inhabitants and used South African postage stamps in the 1970s despite the fact that it was technically part of SWA soil.

The Caprivi Zipfel Affairs Proclamation of 1930 made provision for the establishment of trust funds for the tribes in the Eastern Caprivi Zipfel (ECZ) (See *SAP*, August 2011, for an explanation of Native Taxation in SWA).

The two tribes, the Basubia and the Mafue were recognised by the Union government as the main

inhabitants of the ECZ and stamps were made available for payment of these Native Tribal Levies (Fig.11). In line with the administrative arrangements for the ECZ these stamps were not overprinted 'SWA' but rather the overprints 'MAFUE' and 'BASUBIA' referred to the two tribes located on SWA territory. The following was indicated in one of the Government Printer's record books below examples of these stamps: "Eastern Caprivi Tribal Levies and issued only to the Magistrate Katimo Mulilo via Livingstone Northern Rhodesia"



Fig.8: Two different designs of the 3d Union of South Africa National Savings stamps in the Bantam-format overprinted 'SWA' in June 1949.

Fig.10: The different printings done for the Entertainment Tax labels for SWA by the Government Printer from August 1951 to May 1953. (See table)



Fig.9: Examples of the three different fonts used for the four different overprints in 1950, 1955, 1960 and 1961.

**Conclusion**

It can be confirmed that from a philatelic point of view an interesting variety of stamps and postal stationery items were printed and overprinted by the Government Printer in Pretoria for SWA. This provides philatelists with an interesting field to collect and explore.

The author is indebted to Jan van Beukering of the OFS Philatelic Society for technical assistance of the digitally extracted overprints. Note must, however, be taken that most of these extracts were done from distorted photographs which impacted on the quality and accuracy of some of the extracts.

The author is also indebted to Connie Liebenberg of the RSA Stamp Study Group for assistance in compiling this article.

**Sources:**

- Bennet Kanguma, *Contestations over Caprivi identities: From pre-colonial times to the present*, D Phil degree, University of Cape Town, 2008.
- Dodd, L.J., *Revenue Stamps of the Union of South Africa*, SA Philatelist, September 1956.
- Hasso Reisener, *The Special and Commemorative Postmarks Cachets and Covers of South Africa, 1892-1975*, Pretoria, 1975.
- J. Barefoot Ltd, *British Commonwealth Revenues*, Ninth Edition, York, 2012.
- Post Office Archives, Silverton, Pretoria.
- Quik, W.J., *Rotogravure and Planographic Printing Presses of the Government Printer Pretoria, 1930-1990*. SA Philatelist, June 2004.
- Quik, W.J., *The Postage Stamps of South West Africa 1884-1990*, Netherlands, 2005.
- *The SA Philatelist*: February 1950, June 1952, September 1952, July 1953 and January 1954.
- Union of South Africa, *Official Year Book of the Union of South Africa and of Basutoland, Bechuanaland Protectorate and Swaziland, No. 25 – 1949*, Government Printer, 1950.



Fig.11: Union Revenue Stamps overprinted for the two tribes, the Basubia and the Mafue in the Caprivi strip in SWA for payment of Native Tribal Levies. Stamps overprinted in September 1956.



Fig.13: Union 1d Postcard overprinted SWA in May 1952. Note the inscription in the top left corner indicating the printing date

Fig.12: 'SWA' overprint on a Union postcard approved by a Government Printer official after the first trial print on 5 December 1949.



Fig.14: Union 6d Air Letter overprinted 'SWA' in May 1952.



Fig.15: Union 4d Registered Envelope overprinted SWA in May 1952. Mounted on one of the pages of the Day Books of the Government Printer in Pretoria. Note the job number in manuscript in top left corner.

# Die VOC Hospitaal by Houtbaai ontvang 'n brief...of dalk nie?

deur Pauw Steyl RDPSA, George Philatelic Society



*A postal history inspired article presented in Afrikaans, with a short summary in English provided and comment by Michael Wigmore RDPSA.*

*The core of the article is of particular social history interest giving detail to the development, by the DEIC (Dutch East India Company), of outposts to Cape Town with emphasis on the Hout Bay area and its timber supplies. This seems to be around 50% + of the article and provides background for the region prior to analysis of the postal history 'patient.' The latter is thoughtfully presented and logically argued. I certainly enjoyed the article. This period of SA's postal history is scantily dealt with in philatelic writings and any information is always welcome ... if only by me! Based on Sleigh's work, Steyl paints an entertaining pen-picture for the subject item.*

Michael Wigmore

## THE DEIC HOSPITAL AT HOUT BAY RECEIVED A LETTER ... OR MAYBE NOT?

The late David Crocker asked me some years ago to do some research whether this DEIC wrapper was addressed to a certain Dr Runbeeck at the Hout Bay hospital. A noted South African historian on DEIC Outposts, Dan Sleigh, helped me to find the answer.

The Hout Bay Outpost was already known by 1652. Attempts by commander Wagenaer to transport wood by ship, from Hout Bay to Cape Town, were not successful. At the outbreak of the war between England and the Netherlands in 1672 the castle was not yet completed and the Political Council had to transport large quantities of wood from Hout Bay to Cape Town. Later the Hout Bay valley was used for grain and vegetable farming. In 1781 the western corner of the Hout Bay entrance was fortified with 20 cannons. As a result of an investigation about the possible closure of outposts in 1791, done by the Political Council, it was recommended that the Hout Bay outpost should not be closed.

To determine if this letter was indeed sent to the Hout Bay hospital one has to take the history of the outpost into consideration. What do we have?

As the wrapper is marked 1738 (most probably Jurgens), the existence of a hospital at Hout Bay had to be at that time.

The description of the outpost at Hout Bay ruled out any possibility of hospital facilities. Most of the time there were only a few wood-cutters, at other times the place was desolated.

The wording on the postal article in the end was the final proof that there was no hospital at the Hout Bay outpost. The addressee, D.H. Johannes Runbeeck, was not a doctor but a 'Schoff baas int E Comp's hospitaal.'

In his research Sleigh speaks only of two DEIC hospitals in this period: the 'Kompanjie' (Company) hospital in Cape Town (est.1652) and the 'Simonsbaai' (Simons Bay) hospital (est.1743).

To conclude, yes, this postal item is DEIC 'hospital mail' but addressed to the DEIC hospital in Cape Town.

'n Paar jaar gelede het wyle David Crocker my versoek om hierdie VOC-omslag na te vors. Volgens hom was daar 'n vermoede dat dit aan 'n Dr Runbeeck by die Houtbaai hospitaal geadresseer was. Opdrag aanvaar. Eerste vraag, waar begin ek? Gelukkig is Suid-Afrika bevoorreg om 'n historikus soos Dan Sleigh te hê. Saam met hom, het ek geglo, sal ek by die regte antwoord uitkom. Geniet ons storie!

Sleigh se gesaghebbende boek, *Die Buiteposte*, bring die leefwêreld aan die Kaap vanaf 1652-1795 tot naby jou lyf.

Omdat die verversingspos nie slegs uit die Tafelvallei kon produseer nie is ander buiteposte op strategiese plekke opgerig. In die huidige Kaapse Skiereiland was daar 'n hele aantal, aan die Weskus op Saldanhabaai en St Helenabaai. Ander buiteposte was't Land van Waveren (Tulbagh), 't Warme Bad by die Olifantsrivier (Citrusdal), 't Warme Bad in die Overberg (Caledon), Rivier Zonder Eijnd, Riet Valleij (Swellendam), MosselBaaij, Outeniqualand (George) en Plettenbergs Baaij.

Mijn Heer Mijn  
D H Johannes Runbeeck  
Schoff Baas int E Comp's hospitaal  
aan den  
Eersamen onder Stuurman  
Tot Barend Rijske  
Op schip ook rus dat  
God gelyd. Cabo de Goede Hoop  
1738

*Skets van die briefomslag  
(Translation of the text below)*



*VOC-omslag uit Crocker se Kaapversameling, gedateer 1738, heelwaarskynlik die Jurgens 'datummerk' soos dit op talle ou dokumente voorkom.*

Sleigh vertel: "Die VOC het vanaf 1652 groot hoeveelhede vee nodig gehad vir skeepsverversing, vir die Kaapse hospitaal en die garnisoen..." (bl.63) "Die VOC het sy laaste slagvee in 1700 aan die vryburger Henning Hüsing verkoop, wat daarna die kontrak gehad het om die VOC se skepe, hospitaal en garnisoen van vleis te voorsien. (bl.221) "Die stigting van die skeepsverversingspos in Simonsbaai in 1743, in opvolging van die Here Sewentien se bevel dat VOC-skepe van die middel van April tot die middel van September nie in Tafelbaai nie, maar Valsbaai ververs moes word ... Voordat 'n hospitaal in Simonsbaai gebou is, het twee of drie Schuerwaens die siekes en hulle bagasie van die gearriveerde skepe (in Simonsbaai) na die Kaapse hospitaal geneem." (bl.186)

### HOUTBAAI BUIEPOS

Die Houtbaai Buitepos het reeds in Desember 1652 so bekendgestaan. Kort na sy aankoms aan die Kaap in Tafelbaai het Van Riebeeck vier gewapende klerke te voet oor die nek tussen Tafelberg en Leeukop gestuur. Hulle het terug rapporteer van groot houtbosse in 'n vallei agter Tafelberg. In Oktober 1652 het Van Riebeeck nadere ondersoek na dié houtbosse en baai laat instel. Gunstige rapport van uitstekende skepshout is verkry. Die bome was dik en het regop en hoog gegroei.

Vanaf 1657 is begin om hout vir landboukundige en militêre uitbreidings aan die oostekant van Tafelberg te gebruik. Die hout vir vryburgerwonings, skutheining, stalle en die fort is uit die bosse oos en suid van Tafelberg verkry.

Pogings van kommandeur Wagenaer om timmerhout per skip uit Houtbaai na Kaapstad te bring was onsuksesvol. Hy het sowat 50 houtkappers gebruik maar die swaar hout kon nie met die rivier afdryf see toe nie. Dit moes uit die bosse na die strand gesleep word. Trekdiere en waens is daarvoor gebruik. Die Kompanjie moes vir baie jare sy timmerhout met baie groot moeite uit Houtbaai se kloof na Kaapstad laat aanry. Voordat die kasteel voltooi is het die oorlog tussen Nederland en Frankryk in 1672 uitgebreek. Die Politieke Raad moes inderhaas 'n groot volume hout in die Houtbaai bosse laat kap. Alle trekvee en waens van vryburgers is opgekommandeer om die hout so gou as moontlik na die Kasteel te vervoer. Al die gevangenes wat in kettings aan die Kaap gewerk het is na Houtbaai oorgeplaas om die houtkappery te verhaas.

Verskillende groepe houtkappers het in die Houtbaai vallei gewerk. Vee is gebruik om die bome na die baai te sleep vanwaar dit per skip na Kaapstad vervoer is. Benewens die houtkappersposte was daar ook vee- en landboukundige poste in die Houtbaai vallei waar die Kompanjie se trek- en aantelwee aangehou is. Graan en groenteboerdery het ook plaasgevind. Sleigh se storie raak al hoe

interessanter as hy vertel dat daar teen 1670 so baie houtkappers in Houtbaai was dat die Politieke Raad besluit het om patats te laat plant en varke aan te hou by die boerderypos in die Houtbaai vallei. Met die oorlog teen Frankryk in 1672 is 'n groot aantal burgers in die Houtbaai vallei gevestig. In 1677 het Willem Schalk en Pieter van der Westhuizen soveel grond as wat hulle kon bewerk, ontvang. Hulle moes graan saai en een tiende van die oes as huurgeld en belasting aan die VOC betaal. Elkeen is toegelaat om 30 beeste aan te hou.

Die Houtbaai Buitepos was later vir bykans 100 jaar onbeman. Dit was eers in 1772 dat een houtkapper weer sy intrek in die poshuis, 'n klipgebou, geneem het. As enkel houtkapper kon hy nie veel uitrig nie en was hy meer 'n opsigter as iets anders, darem 'n bewys dat die grond aan die regering aan die Kaap behoort het.



As bondgenoot van Frankryk was Nederland in 1780 in die onafhanklikheidsstryd van die Amerikaanse kolonies teen Engeland betrokke. Houtbaai is in 1781 gefortifiseer met 20 kanonne aan die westelike hoek van die ingang.

Vroeg in 1791 het die Politieke Raad twee persone, O. de Wet en W. van Reede van Oudtshoorn, gevra om die moontlike sluiting van die Kaapse buiteposte te ondersoek. Die aanplanting, kap en voorsiening van hout was strategies so belangrik dat hulle aanbeveel het dat die Houtbaai pos behou moes word. Die onkoste aan lewensonderhoud van die twee houtkappers by die Houtbaai pos was 380 gulden en 1 schelling per jaar. Ander onkoste was so min teenoor die belangrikheid van die beskerming van die Kaapse hout teen uitroeiing en veldbrande dat die buitepos nie afgeskakel is nie.

So asof Sleigh daar was, gee hy vir ons so'n bietjie binnekring informasie as hy sê: "Aan die einde van 1793 is daar nog hout by die pos gekap en voorberei. Die voltooide werk is eenmaal per maand in die Kaap afgelewer. Dit het drastokke, handspake, tentpenne, kruuiwaens, 'boomen' (ronde balke), 'pooten' (ronde pale vir driepote), vellings en speke ingesluit. Houtbakke en houtlepel is vir die hospitaal en slawelosie uitgesny, en besems is vir die amptenare se huise gemaak."

Met die oorlogsverklaring in 1793 van Frankryk teen Nederland en Engeland is Houtbaai se oorlogsgeriewe opgradeer. Tydens die eerste Britse besetting aan die Kaap 1795-1803 is Houtbaai as militêre pos uitgebrei. Gedurende die Bataafse regering, 1803-1806, word Houtbaai net as 'n militêre pos gebruik en nie meer as 'n houtkapperspos nie.

Dan Sleigh se Houtbaai Buitepos storie dien nou as agtergrond op die vraag of hierdie brief wel na die Houtbaai hospitaal gestuur was. Voordat ons die brief in die hand neem, dink ek, moet ons net eers vasstel of Houtbaai wel 'n hospitaal gehad het. Uit my navorsing het die volgende geblyk:

- Omdat die brief 1738 gemerk is sal die bestaan van 'n moontlike hospitaal op Houtbaai binne dié tyd moet val.
- Sleigh meld slegs die Kaapse Kompanjie Hospitaal 1652 (bl.63) en 1700 (bl.221) wat voor 1738 val. Die vroegste wat hy van 'n tweede hospitaal praat was die Simonsbaai hospitaal wat in 1743 voltooi is. Voor dit is pasiënte met waens na die Kaapse hospitaal aangery.
- Die beskrywing van die Houtbaai Buitepos hierbo skakel die moontlikheid van 'n hospitaal daar uit. Soms was daar miskien 50 houtkappers maar die meeste van tyd net een of twee. Selfs toe boerdery in die vallei aangepak is, was daar maar enkele boere en in 1700 het die Kompanjie sy landboubelange aan Henning Hüsing verkoop.
- Houtbaai is eers weer in 1772 as 'n besette buitepos gelys. Dit skakel die moontlike bestaan van 'n hospitaal uit.
- Die bewoording op die posstuk het toe op die einde my vermoede bevestig. Dit gee geen aanduiding van Houtbaai nie. Na ure se sorgvuldige bestudering van die skrif met behulp van 'n vergrootglas, die vergelyking van letters met mekaar, het ek vasgestel dat Runbeek definitief nie 'n mediese dokter was nie. D.H. (nie DR) Johannes Runbeek, die geadresseerde was wel die Schoff Baas int E Com's hospitaal. Die posstuk was ook nie aan Houtbaai geadresseer nie.
- Die agterkant van die omslag bevat twee VOC wasseëls, onderskeidelik gemerk B en R. Ek glo dit verteenwoordig die skip se naam, 'Barend Rijske', soos dit in die handgeskrewe inskripsie op die voorkant voorkom.
- Dit kan dus aanvaar word dat hierdie posstuk 'hospitaalpos' is van die Kompanjies Hospitaal in Kaapstad.

### Skets van die briefomslag

VOC-omslag uit Crocker se Kaapversameling, gedateer 1738, heelwaarskynlik die Jurgens 'datummerk' soos dit op talle ou dokumente voorkom.

### Bronne:

- Sleigh, Dan : *Die Buiteposte*. Pretoria, 1993
- Crocker, David : *Postal History Collection*.

# The Railway Strike, January 1914

by Jim Findlay RDPSA, The Philatelic Society of Johannesburg



## Introduction

After the Anglo Boer War the employment of Afrikaners and the development of the rural communities were priorities for the Government. This resulted in the majority of skilled employment positions on the mines, railways and harbours and in other state and municipal entities being taken up by Afrikaners. As a result, in the mining industry the mines were owned by 'the English', the skilled artisan and mining positions were occupied by 'the Afrikaners' and the manual labour was done by 'the Blacks'.

By 1913 the price of gold was stable but the cost of production had increased. It was this economic pressure that motivated the mine owners to propose that black workers could be trained to do much of the skilled and semi-skilled work on the mines. The wages of black workers would be lower than that of white workers and thus production costs could be reduced. This resulted in the trade union organising white miners to go on strike in June 1913. The Government declared martial law and mobilised the British garrison troops to support the police in suppressing the strike. The Government was not prepared for handling such a militant strike action, which resulted in ongoing discontent. After the miners' strike was over, the role of the trade unions became more prominent.

## The January 1914 Railway Strike

Early in January 1914 the management of South African Railways and Harbours proposed opening skilled labour positions to the black workers. This was strongly objected to by the white railway workers and the Amalgamated Society of Railway and Harbour Servants (ASRHS) asked the Transvaal Federation of Trade Unions (TFTU) to call a strike. The strike action was supported by the white coal and gold miners and the typographical union.

The Government was aware of this discontent and the police were dispatched to the various railway workshops on 7 and 8 January in an attempt to stabilise the situation. The government mobilised 18 Active Citizen Force units and 36 Commando units on 10 January in anticipation of a major railway strike.

On 13 January the TFTU declared a general strike in support of the railway workers.

Viscount Gladstone, High Commissioner for South Africa, Governor General and Commander in Chief, in and over the Union of South Africa, proclaimed martial law on 14 January 1914. This was supported by General Louis Botha as Prime Minister and General Jan Smuts as Minister of Defence.

The areas where martial law was proclaimed were 11 districts in the Transvaal (Barberton, Boksburg, Carolina, Germiston, Heidelberg, Johannesburg, Krugersdorp, Lydenburg, Middelburg, Potchefstroom, Pretoria), five districts in the Orange Free State (Bloemfontein, Heilbron, Kroonstad, Vredefort, Winburg) and 4 districts in Natal (Camperdown, Durban,

Inanda, Pietermaritzburg). Twelve Control Officers were appointed to co-ordinate the police, special constables and the military forces in these districts. As examples, Col. T.G. Truter, Commissioner of the South African Police, was appointed the Control Officer in No.1 Control Area (Johannesburg, Benoni, Boksburg, Germiston, Krugersdorp, Maraisburg, Roodepoort, Springs) and Brig. Gen. H.T. Lukin, CMG DSO, Inspector General of the Defence Force, was appointed the Control Officer in Nos. 2, 3 and 4 Control Areas (Pretoria and all other magisterial districts in the Transvaal).

The proclamation of martial law included the following: no meeting of more than six persons was permitted other than for religious purposes; price control of all goods was implemented; a commissioned officer or Control Officer could requisition transport animals, vehicles and buildings for military purposes; picketing was prohibited; strict control of all firearms, ammunition and explosives was implemented; any person using opprobrious epithets such as 'scab' or 'blackleg' was guilty of an offence; permits were required for persons moving out of magisterial districts; there could be no incitement or obstruction of forces in the execution of their duty. In addition a curfew between

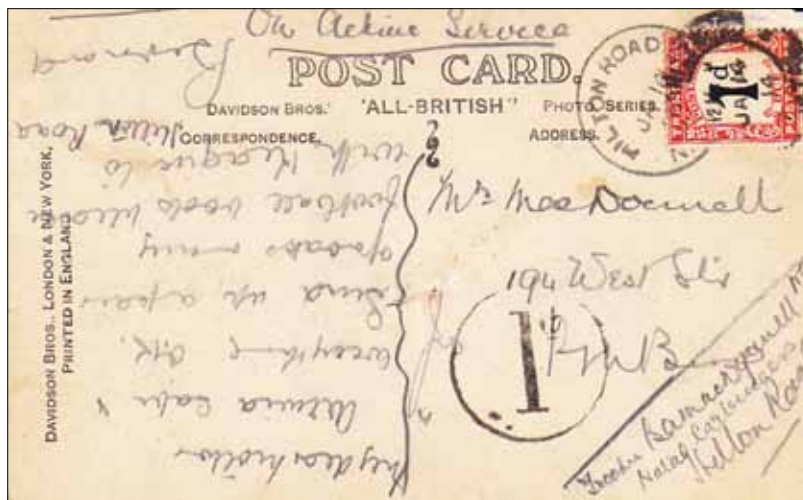


Fig.1: A postcard written by Trooper Bernard MacDonnell, Natal Carbineers, from Hilton Road to his mother in Pietermaritzburg on 14 January 1914. The Natal Carbineers were mobilised on 10 January to protect the main Durban to Johannesburg railway line. Trooper MacDonnell's detachment protected the railway tunnel at Hilton Road.



Fig.2: A postcard from 'Fred' to his wife informing her "I'm sorry to say that we won't be home tomorrow", which appears to have been hand carried and not sent through the postal system. The photograph on the postcard depicts men and horses being commandeered at Senekal in the Orange Free State to combat the railway worker's strike.



Fig.3: An original watercolour painting on a postcard, by the French artist André Felix Roberty (1877-1963), of an Afrikaner intimidating an Englishman. The painting is signed and dated "16th to 22nd January 1914. No.66. Done in South Africa". The translation of the manuscript caption is "The Afrikaner – Well my dear Rosbif, what do you say to that?..." "Rosbif" is a derogatory French term for an Englishman. Roberty clearly supported the Afrikaner cause against the English.

20h00 and 05h00 was implemented on the Witwatersrand, which also included 'natives' and the movement of livestock. A further restriction was placed on persons near railway premises and telegraph/telephone lines.

In Control Area No. 8 (Pietemarienburg) all picketing was prohibited and all railway property, wharves and power stations were off limits to all persons.

By 18 January the strike was crushed and the strike leaders arrested. The strike leaders were declared undesirables and taken to Durban and deported on the ship *Umgeni* to London, UK. The strike lasted five days and the troops were mobilised for nine days.

**Illustrations:** Mail items and documents from this 1914 Railway Strike are rare and seldom seen.

## References

- Dippenaar, Marius de Witt (1988); *The History of the South African Police 1913-1988*, published by Promedia Publications (Pty.), Ltd.
- The Governor General (1914); *Martial Law in the Union of South Africa, January 1914. Proclamation and Regulations issued by the Government and Appointments of Control Officers* by Command of the Governor General. Printed by Cape Times Government Printer 1914.
- Visser, Wessel (2001); *South African Labour Movement's Responses to Declaration of Martial Law, 1913-1922*, Department of History, University of Stellenbosch. A paper presented at the 'War and Society in Africa' conference, South African Military Academy, Saldanha Bay, 12-14 September 2001.

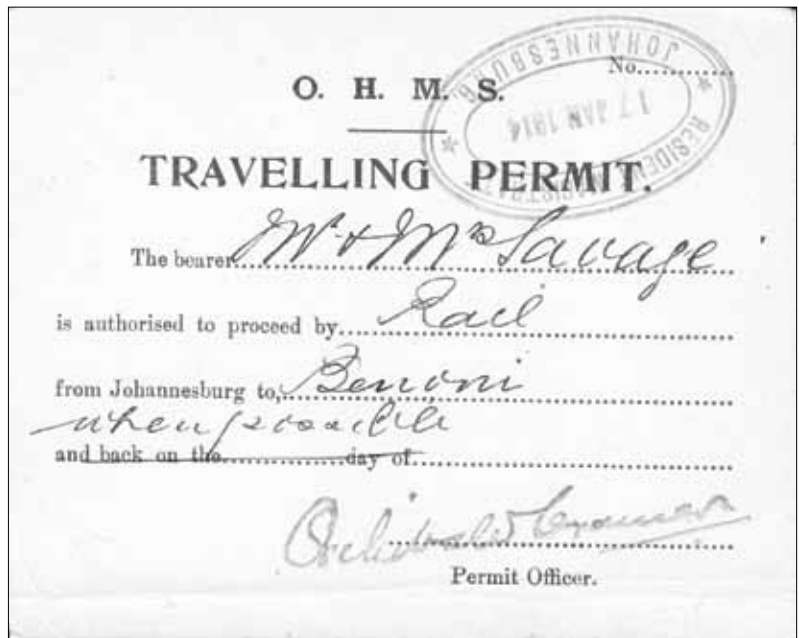


Fig.4: A 'Travelling Permit' issued on 17 January by the Permit Officer Archibald Cramer to Mr and Mrs Savage to travel by rail from Johannesburg to Benoni 'when possible' during the strike. This suggests that certain Witwatersrand area rail routes were open and functioning on this date despite the strike action. It is endorsed and dated by the Resident Magistrate, Johannesburg.

## PHILATELIC ACCESSORIES

All products by LINDNER and HAWID  
Stock Books, stock cards, magnifiers,  
Catalogues, testing instruments, etc



**JANSSEN STAMPS, P O BOX 404, SIMON'S TOWN, 7995**

WWW.JANSSENSTAMPS.COM / TEL. 021 786 1548 (MO-FR.10 - 18) / Email: info@janssenstamps.com

Part 20

# DECORATED POST OFFICES

by Prof Garry Osthoff, OFS PS Bloemfontein

*Umhlali*



The Northern region of KwaZulu Natal was favoured by the Zulu King Shaka for military barracks. The capital became KwaDukuza, now called Stanger. One of these Zulu barracks was called Mdumezulu, which means “where the heavens thunder”. A magisterial post was established near the barracks in 1850. The first magistrate was C.H. Williams and the settlement was known as Williamstown, but the name fell into disuse in favour of uMhlali, the Zulu name for the monkey orange tree (*Strychnos spinosa*), which grew along the banks of the Umhlali river. The post office is a Baker-style building in red face brick, with a red shingled roof and a double arched loggia. The buttresses on the sides are detailed with a ‘tumbled-in’ brickwork. Only a small part of the building faces the street. It was built in 1937 and is still in operation. Pots manufactured by J. Kirkness Ltd. Pretoria flank the entrances and two tiled panels by Audrey Frank decorate the sides. Audrey was trained at the Durban School of Art and Reinmann School, London, and also taught at various art schools.

It is interesting to note that the dress depicted in the 1937 art works differs from that worn in





modern times. This helped with the description of the scenes. A typical amaZulu community celebration of the late 19th century is represented here. The panel on the left of the entrance seems to be the dance of a bride and her maidens in front of her groom at the wedding ceremony. The foremost lady is carrying a small spear that is used to kill the cow for the wedding festival. The feathers displayed on the side of her upper forehead identify her as the bride. The women's conical hairstyles are indicative of the area north of the Tugela River, including the royal area of Nongoma and Mahlabatini. There are married women wearing the black isidwaba skirts as well as unmarried girls. All are carrying small dancing shields and sticks, which suggests that this is a festive occasion, where they are dancing for the pleasure of the inkosi wearing a leopard skin and turaco feathers, second from middle left.

Normally married and unmarried women dance separately, so there may be some artistic licence here. The detail of the cooked maize cob that is presumably on its way to the inkosi is interesting.

The second panel of the men dancing is again indicative of a festive occasion. They are carrying

sticks and small dancing shields as opposed to traditional weapons and full length shields. The fact that the shields are of various colours indicates that the men are from different age regiments, which also suggests a community event rather than anything military. There are headdresses but no head rings among the male dancers, suggesting that they are dancing for the entertainment of more senior members of the community. The presence of the dwellings and the relatively small numbers of people shows that the activity is taking place in a community, rather than a military kraal. It could also be possible that this scene complements the bridal dance of the first panel, and that the men are dancing before the family as part of the bride's and groom's party, which is common practice at weddings when the community unites in joy.

**References:**

- Artefacts.co.za; Bulpin, T.V. (1966) *Natal and the Zulu Country*, Cape & Transvaal Printers Ltd.

**Acknowledgements:**

Vivienne Garside, Vukani Zulu Cultural Museum; Regina van Vuuren, Amafa/Heritage KZN; Howard Balcomb, KwaDukuza.



# Thematically Yours

Get Collecting - it's fun!

by Rev Cassie Carstens,  
Afrikaanse Filatelievereniging Pretoria

This is the 84th of the Series!



## \* Hydrangeas in Canada

By mid-summer in Canada, one need not look far to find thriving hydrangeas. Requiring little more than regular watering and a bit of shade – and crowned with colours, billowy heads of tiny flowers – they are a perennial favourite among gardeners. Another reason for their popularity lies in their remarkable ability to achieve a particular colour based on soil conditions. Growers can achieve pink, blue or lavender flowers, depending how acidic or alkaline the soil is and how much aluminium it contains. The *Hydrangea arborescens* or smooth hydrangea is native to the Western United States and is represented by the bulbous, snow-white blossoms of the cultivar 'Annabelle'.



## \* Australian Legends of Singles Tennis

For several decades during the second half of the 20th Century Australian tennis players dominated the international tennis circuit. The stamp series honours 12 legends from the golden age of Australian tennis. Lleyton Hewitt retired from playing after the Australian Open 2016. His career achievements include winning the 2001 US Open and 2002 Wimbledon men's singles titles and he is also the most capped Davis Cup player of all time.



## \* Australia and WWI in 1916

In March 1916, Australian troops joined allied forces on the European Western Front in a system of trenches that stretched 750 km, from the Belgian coast through France to the Swiss border. British and French troops had been engaged there since 1914. The first Australians were sent into the Armentiennes area, in the north, where they were introduced to trench warfare. They endured costly conflicts at Fromelles in French Flanders, and soon after, at Pozières and Mouquet Farm, in the same valley.



## \* The Robber Crab on Christmas Island

Christmas Island is home to the largest terrestrial anthropoid on earth, the Robber Crab (*Birgus latro*), also known as the Coconut Crab. These are found in most parts of the island and usually venture out at night or on overcast days. They forage on vegetable material or carrion on the forest floor. The Robber Crab is also found on other tropical islands in the Pacific and Indian Oceans, but Christmas Island supports the world's largest population. These huge crabs can weigh up to four kilograms and have an impressive leg span around 800mm. The crab's body colour varies from light violet to deep purple, purplish-blue or orange-red to brown.



## \* Free and Equal

In February 2016, the United Nations issued a set of commemorative stamps to promote the UN Free and Equal campaign for lesbian, gay, bisexual and transgender equality. An initiative of the UN Human Rights Office, Free and Equal is a global public education campaign dedicated to raising awareness of homophobic and transphobic violence and discrimination globally. Since its launch, the campaign has generated streams of popular content and engaged millions of people in an effort to promote the fair treatment of gay and lesbian people and generate support for measures to protect their rights.



## \* UN Women

Gender inequality is one of the most persistent human rights violations of our time. Despite many years of promoting gender equality, inequalities among women/girls and men/boys continue to manifest in various ways around the world. Gender equality is not only a women's issue, it is a human rights issue that affects all of us. We all benefit socially, politically and economically from gender equality in our everyday lives; where women are empowered, the whole of humanity benefits. Gender equality saves not only women, but also men, from prescribed social roles and gender stereotypes. The overall goal is to spread awareness and spark action in eliminating all forms of discrimination and violence against women and girls.



## \* King George V

Queen Victoria's second eldest grandson came to the throne on 6 May 1910 following the death of his father



King Edward VII. Born on 3 June 1865, King George started his career in the Royal Navy but found himself first in line to the throne after the untimely death of his elder brother Prince Albert Victor, Duke of Clarence and Avondale. He was well known as an avid stamp collector.

## \* Dinner is served in Åland

Åland cuisine has always been influenced by local farming, fishing and hunting, but, at the same time, Åland sailors brought home with them new tastes from around the world. Åland cuisine is much more than black bread and pancakes with prune jam. How about fried algae, handmade goat's cheese, air-dried beef and honey beer? Several restaurateurs and manufacturers in Åland are today again focusing on locally produced food.



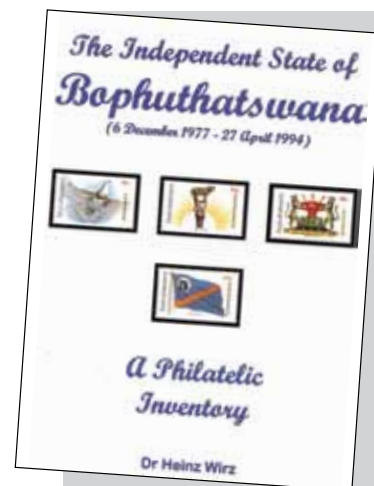
## References

- Canada Post: March-April 2016 / No 2
- Australian Post 339: March-April 2016
- United Nations: Fascination – No 347: 1/2016
- Jersey Stamp Bulletin: Winter 2015/2016
- Ålandposten: No 3/2016

## BOOK REVIEW

### The Independent State of Bophuthatswana: A Philatelic Inventory

Reviewed by Andrew Fischer, Witwatersrand Philatelic Society



This book, written by Dr Heinz Wirz, was published in 2015 by Belman Litho (Pty) Ltd, ISBN 9780620676106, R400, hardbound, 226 pages.

This impressive limited edition of 50 copies is divided into two sections. Part 1 deals with the official issues of the Bophuthatswana postal authorities; Part 2 deals with the 'Private' issues bearing the stamps of Bophuthatswana – these are philatelic items produced by someone other than the postal authorities. The author has elected not to deal with the postage stamps issued by Bophuthatswana.

Part 1 is sub-divided into five sections – The Official commemorative postmarks and the stamps they cancelled; Official date stamp cards and envelopes; Postal stationery; Postmarks of Post Offices; and Bearer development bonds.

Part 2 is sub-divided into three sections – The Silk issues and gold-windowed commemorative first day covers; Other commemorative items; and Flight covers and pigeograms. The author has provided comprehensive listings of all the items identified by him to date, suitably broken

down in the sections set out above. The items listed have been meticulously researched, as evidenced by the wealth of detail provided and the hefty bibliography. There are a vast number of colour images to assist the philatelist to identify the listed items. Many items are almost certainly not known to South African philatelists, and I am equally sure that the author will now receive a number of items that he has not listed in the catalogue.

If there is a criticism, it is that the author has not numbered the various postmarks of each office he has listed, in contrast to the other listings in the catalogue.

This catalogue is not only a "good looker", but is a fantastic addition to any philatelic library. Collectors of South Africa, particularly the Republic period, who have largely ignored the Homelands to date, will eventually have to come round to the fact that the stamps and postal history of the Homelands are a vital and integral part of the modern postal history of South Africa. The author intends to publish a further three catalogues covering the remaining Homelands based on the same format as this first catalogue. I wish him well in this major endeavour!

#### DAVID MORRISON

SPECIALIST DEALER IN BRITISH  
COMMONWEALTH  
POSTAL HISTORY, SHIPWRECK MAIL  
AND WORLDWIDE UNUSUAL POSTAL  
INCIDENTS

View all items at:

[www.forpostalhistory.com](http://www.forpostalhistory.com)

D. Morrison Ltd.  
9 Crab Tree Close, Malmesbury  
Wiltshire SN16 0AF,  
United Kingdom  
Tel: (+44) 1666 822055  
Email: [africonect@aol.com](mailto:africonect@aol.com)

## This is a glimpse of our BEAUTIFUL WORLD...



### ... let's share in the totality of its PHILATELY\*

For buying, selling and bi-monthly AUCTIONS, just contact

**PAUL VAN ZEYL t/a RAND STAMPS**

email: [paulvz@mweb.co.za](mailto:paulvz@mweb.co.za)

telephone: 012 329 2464



**\* stamps, postal history and stationery, postmarks, postcards, documents and literature**

For the whole collecting continuum, from beginner-collectors to well-seasoned philatelists!

# A Newly Discovered Mulready Caricature

by Dr Rob McLennan-Smith, Highway Philatelic Society, Westville



The pre-paid lettersheet designed by William Mulready was issued for public use along with the 1d Penny Black and 2d Penny Blue adhesive postage stamps on 6 May 1840 in Great Britain (Figs.1&2). The adhesive stamp was a resounding success with the Victorian public but the Mulready design came under immediate fire and was ridiculed from all sides.

Within two weeks the Mulready Caricatures starting appearing, with the Fores' Comic No.1 and the Hume's Comic No.1 being the first two and most well known. Over the next few months numerous designs from different artists and publishers caused the demise of the Mulready.

The Caricatures have become highly collectable for their wonderful satirical and/or comic designs, many are unique and command high prices. Almost all have been well documented - firstly in Major E.B. Evan's book *The Mulready Envelope* (published 1891, reprinted 1970) and subsequently in *British Pictorial Envelopes of the 19th Century* by Bodily, Jarvis and Hahn (published 1984).

My father, Alan, and I have been collecting Victorian Great Britain postal history and in particular the

Mulready Envelope and its Caricatures over the last 40 years.

About three years ago, a friend of ours - who was originally from Cape Town and has been a philatelic dealer in London for many years, contacted me to say he had found a previously unrecorded Mulready Caricature in a deceased estate. Obviously we were delighted and purchased the envelope.

The Caricature which I have called the Black Cat Froom, was designed by Frederick Froom and is an unused envelope in reasonable condition with the exception of some black and red ink stains (Fig.3).

It depicts a very odd looking Britanna with a black cat at her feet and another on her lap. She is holding a quill and appears to have drawn a copy of the Penny Black. Naked



Fig.1: A 1d Mulready Lettersheet used on the first day of issue, 6 May 1840, from the Lord Mayor of London to Lower Edmonton, Middlesex.



Fig.2: The first known used Caricature with an adhesive stamp - Hume's Comic no 1 'Brittania seated on an egg' sent from London to Penicuik on 19th May 1840 with a 1d Penny Black plate 1a and a red Maltese Cross cancellation



Fig.3: The first found, and only complete envelope of the Froom Caricature



Fig.4: Southgate No 1 'Pick-Pocket' by Froom sent from Cirencester to Edinburgh 31st Dec 1841' with a 1d Penny Red .

men with tridents are chasing her 'angels'. It is signed **Fred Froom Del** bottom centre. Frederick Froom was the artist who drew the designs for the Southgate number 1 and 5 envelopes (Figs.4&5). The JW Southgate firm operated as a library from 164 Strand, London in 1840 and they produced a series of six highly successful caricatures but very little is known about the firm, the artists (Froom and Madeley who drew the other four) or the printer.

About a year later, our dealer friend contacted us again to say that he had found Frederick Froom's scrapbook with a number



Fig.5: Southgate No 5 'Pickwick' sent to Augeley, Staffordshire with a 1d Black (lifted and replaced)



Fig.6: The scrapbook with the front cover bearing his name card, the opening page with his crest, examples of two of his works and George Cruikshanks signature .

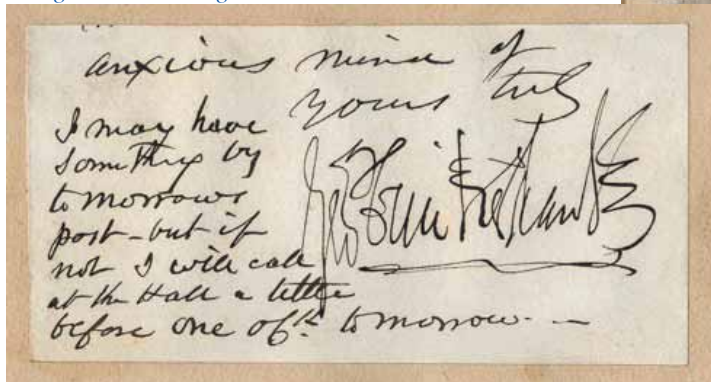




Fig.7: The two State 2 unused Froom fronts with the side inscription in the lower example.



Fig.8: The State 1 cover with a London date stamp of July 11 1840 and on the side flap a receiving Brighton CDS from the next day

of his drawings, etchings, sketches for *Punch Magazine* and a signed letter from George Cruikshank (Fig.6).

Pasted into the book are four Caricatures - an unused copy of Southgate number 5 and three of the Black Cat in two different states.

The used Black Cat has a 11 July 1840 date stamp so would be State 1 and the one example of State 2 has inscribed on the page *Etched by Fred* (next word unclear 'Delwyn?') January 1841'

The states are identical except for the artists name which is low central in State 2 'Fred Fromm Del' (Fig.7) and placed towards the left lower corner in the State 1 'Fred Fromm' (Fig.8).

There are two State 2 covers, one in very clean condition and the second less so.

The State 1 is the used cover with the left flap intact and a circular date stamp (CDS) of Brighton dated 12 July 1840. The front has a London date stamp of 11 July 1840 and there is a red manuscript prepaid '1'. Most unfortunately the address panel has been cut out.

I have forwarded all the images and information to Robin Cassell in London who is presently working on a book detailing all the Mulready Caricatures and we look forward to seeing this published shortly.

If any collector has any items not detailed in *British Pictorial Envelopes of the 19th Century* by Bodily, Jarvis and Hahn (which is the main reference for Caricature collectors), please could they send details to Robin Cassell for the completeness of his work at [www.mulreadyphilatelics.co.uk](http://www.mulreadyphilatelics.co.uk)

**Note:** All the items shown in this article are from the McLennan-Smith Philatelic Collection.



Wilson Bayly Holmes - Ovcon Limited  
 53 Andries street, Wynberg, Sandton  
 P.O. Box 531 Bergvlei 2012, South Africa  
 Tel: +27 11 321 7200 Fax: +27 11 887 4364  
 (e) [wbho@wbho.co.za](mailto:wbho@wbho.co.za) (w) [www.wbho.co.za](http://www.wbho.co.za)

RELY ON OUR ABILITY

**WBHO**  
 CONSTRUCTION (PTY) LTD

## The Gandhi Connection

by Chris Mobsby RDPSA FRPSL RNCP, Witwatersrand Philatelic Society



Whereas in the period between June 2004 and February 2014 the majority of the articles that I contributed to *The SA Philatelist* were connected with local posts, the so-called 'Cinderellas' of philately, I have, more recently, identified a number of covers in my collection that are of a more general nature but have, nevertheless, an interesting story to tell. In December, 2013 I presented an article on a cover from Bhutan and since then I have included items from the British Virgin Islands, British Bechuanaland, French Sudan, the Faeroes, Nicaragua, Smyrna and Japan, a seemingly odd selection and, for the most part, off the beaten track but all, with the exception of the waybill from the Faeroes, to be found in any regular catalogue of the stamps of the World. The cover that I have taken from my collection in order to illustrate the present article does typify the type of material that I would choose to write about in that it has elements of social as well as philatelic interest.

Prior to 1958, some 130 islands and islets situated in the south-central Pacific Ocean and approximately halfway between Australia and South America were known

capital of what is now referred to as French Polynesia. Tahiti itself became a protectorate of France in 1842 and its status was elevated to that of a colony in 1880. From 1882, certain stamps issued for the French colonies in general were overprinted specifically for the island and this practice continued until 1893 when they were superseded by issues for the Oceanic Settlements as a whole (Fig.1). In 1913, a set of pictorial stamps was produced for the group with the lower values bearing a portrait of a *vahine*, a young girl of the islands. A pair of the 2-cent value from this set is shown on a cover to England that was posted in 1931 (Fig.2). Such girls as this were to feature prominently in the works of Paul Gauguin, the celebrated Post-Impressionist painter who was born in 1848 and, in his early forties, had fled to Tahiti



Fig.1: 1915 Tahiti Red Cross Overprint SG 60

this is provided on the reverse of the cover by a hand-stamp of the port of Haifa, in what is now Israel, with the date 22 December 1931. The Khedivial Mail Steamship Company, the original name of the Line, had been founded in 1858 when it serviced ports in the Red Sea and Syria as well as Alexandria, Constantinople and the Suez Canal. At one stage, the line also ran a service between Egypt and New York. Although the history of the *S.S.Taif* is somewhat obscure, it appears that she became one of a fleet that had, in earlier days, been owned by a Durban businessman, Abdoolla Hajee Adam Jhaveri. It was this same Jhaveri who had included among his craft the *S.S.Nadeni*, an earlier sister-ship to the *S.S.Taif* and the actual vessel in which the celebrated non-violent freedom fighter, Mahatma Gandhi (1869-1948), had sailed from India to South Africa in May, 1893. In an obituary written by Gandhi himself in 1912, Jhaveri, or Dada Abdulla, as he was more commonly known in Durban, was acknowledged as a leading light in the Indian community of Natal at the turn of the century. The records show that the *S.S.Taif* was built in Glasgow in 1928 and was scrapped and sunk in the Gulf of



Fig.2

collectively as the French Oceanic Settlements. The total land mass amounted to an area of some 3940 km<sup>2</sup> spread over no less than four million km<sup>2</sup> of ocean and included the Marquesas and the Tubuai, Gambier and Society Islands. In this latter group is to be found the island of Tahiti on the north coast of which is located the town of Papeete, the

in order to escape "European civilisation" and "everything that is artificial and conventional" in France. He was to die at Atuona in the Marquesas in 1903.

This particular letter was carried from the Pacific Ocean aboard the *S.S.Taif* of the Khedivial Mail Line and passed through the Suez Canal *en route* to England. Evidence for

Suez in 1969.

Although this cover features as the representative of French Oceania in my collection of *The Issuing Authorities of the World*, it might, conceivably, be equally at home in a thematic or, perhaps, an open class exhibit based on *The Life of Gandhi*.

# COLLECT NYASSA COMPANY STAMPS

by Andrew Fischer, Witwatersrand Philatelic Society



## Introduction

This article is the third in a series of articles presenting the stamps of Mozambique. My previous articles are 'Collect Mozambique Stamps' (Published in *The SA Philatelist* of June 2015) and 'Collect Mozambique Company Stamps' (Published in *The SA Philatelist* of December 2015).

The Companhia do Nyassa came into being on 16 March 1893, founded by the firm of Bernardo Daupias & Co. The Royal Charter to administer the northern parts of Mozambique was originally granted on 28 September 1891, some eighteen months before the formation of the company. It is interesting to note that the borders of northern Mozambique had only been settled by treaty with Great Britain in May of 1891. The Charter was originally for a period of 25 years, extended in 1894 to 35 years. The Charter finally terminated on 27 October 1929 after an ultimately unsuccessful sojourn of 38 years.

As with other Charters issued by the Portuguese government, the Companhia had the right to issue postage stamps and operate its own postal administration.

## Why Collect Nyassa Company Stamps?

The Companhia represents a narrow collecting field, with only 140 duties issued during the lifetime of the Companhia. This gives the appearance that this is a straightforward area to collect to completion. However, appearances can be deceptive!

The stamps of the Companhia provide a rich source of interesting material to collect and research. Most of the stamps of the Companhia are readily obtainable at reasonable prices and, with a few exceptions, are available in both mint and used condition. Unfortunately, this is due to the highly questionable sales tactics of the Companhia, who wasted no time in gouging the philatelic market. However, the postal history of the Companhia attracts high prices due to the scarcity of covers. The 1915 census recorded only 184 Europeans in the territory of the Companhia!

While Waterlow & Sons of London printed more than half of the duties issued by the Companhia, proof material remains difficult to come by, as most of this material is tightly held by a small number of collectors.

Set out below is a summary of the definitive stamp issues of the Companhia from its inception and until the termination of the Charter in October 1929.

## The Currency used in Nyassa Company

The Companhia used the same currency as in the rest of Mozambique (except for the territory of the Companhia de Moçambique). The *Milréis* and *réis* were used until decimalisation of the currency in 1913. The Mozambique Escudo, equivalent to 100 centavos, replaced the *Milréis* thereafter.



Fig.1

## The 'Cabo Delgado' Provisional Issue

George Wilson, a London based concession broker, was the first managing director of the Companhia. In 1894 he arranged for the printing of an issue of postage stamps supposedly for use in the Charter territory. However, the issue was never authorised by the Portuguese authorities (who had a right of veto of postage stamp issues in terms of the Charter) and the stamps were only ever sold into the philatelic market. This issue, known as the 'Rooks' issue, is found perforate and imperforate, and is even found surcharged in black. (Fig.1).



Fig.2



Fig.3

## The First Postage Stamps

The first postage stamps issued by the Companhia were duties of Mozambique overprinted 'Nyassa' in a single line in black. The duties were drawn from the remainders of two Mozambique Carlos I issues. This issue was authorised by a notice in the Governor's Diary of 30 October 1897.

A total of twenty-six duties were issued in January 1898. The stamps were issued on two papers in three different perforations - 11½, 12½ and 13½ (Fig.2 and Fig.3).



Fig.4



Fig.5

The issue was withdrawn on 1 August 1898 and the duties were invalidated on 31 August 1901. Due to the very short period of time that these duties were valid for postage, the covers are very scarce and attract premium prices.

The surplus duties were sold by auction and purchased by a French dealer.

## The King Carlos I 'Giraffe and Camel' Issue

This issue featured a giraffe against a background of palm trees (Fig.8) on the lower seven values and a pair of Dromedary camels (Fig.4) on the six higher values. Waterlow & Sons of London printed this issue, designed by Sir Robert Edgcumbe.

First issued on 1 August 1901, this issue comprised thirteen duties being variously Line perforated 13½ to 15. This issue is found with a two major varieties: inverted vignettes on nine duties, and imperforate between duties.

Only a single sheet of 50 duties of each of the 2½r, 10r, 15r, 50r, 75r, 80r, 150r, 200r and 300r duties was printed with the inverted centre. These original inverted centres, all from the 1903 second printing of these duties, are very rare. Collectors are warned that in 1922 Waterlow & Sons, at the behest of the Companhia, printed 1,000 examples of all thirteen duties, all with inverted centres – therefore 5r, 20r, 25r and 100r duties with inverted centres can only be from the 1922 reprints. These 1922 inverted printings, intended for the philatelic market, are more common and should attract significantly lower prices than those of the original second printing. The easiest way to distinguish the original inverted printings from the 1922 reprints is by looking at the gum – the original printings have gum that is even and shiny; the reprints have gum that is yellowish, cracked and uneven.



Fig.6

In late 1902, due to a change in a number of common postal rates by the UPU, Waterlow & Sons surcharged five stamps. These stamps, all from the second printing, were released both



Fig.7

in London and the Nyassa territory. These stamps were only on sale from March to September 1903 in the territory and are rare on cover (Fig.5).

In addition, the same five values were surcharged locally using the original first printing duties delivered in 1901. Again these stamps were only on sale from March to September 1903, and are very rare used on cover. Collectors are again warned that there are many forgeries of these surcharged duties, and it is recommended that these stamps are only purchased with certificates issued by competent authorities. *Caveat emptor!*

This issue was in service until its withdrawal in 1911, after Portugal became a Republic.

#### The King Manuel II issue overprinted 'Republica'

After the assassination of King Carlos I in 1908, King Manuel II ascended to the Portuguese throne. Waterlow & Sons were again appointed to print the new duties. The same frame as for the King Carlos I issue was used, except the King's portrait was changed. Two additional vignettes were introduced, one depicting the common zebra (not illustrated) and the other Vasco da Gama's flagship *São Gabriel* (Figs.6 & 7).

The first printing of the duties was delivered to Lisbon late in 1910, whereupon the Casa de Moeda overprinted the duties 'Republica' and sent them on to the Nyassa territory (Fig.6).



Fig.8

A portion of the first printing of the duties was archived in Lisbon without the overprint. A small quantity of these duties were sold into the philatelic market (Fig.7).

This issue was issued on 1 March 1911 and remained in service until its replacement by the new definitive issue in 1922.

#### The New Currency Surcharges

Although the new currency had come into force as early as 1914, the postal authorities made no moves to issue duties in the new currency until early 1918. This was due to the effects of the First World War, with the Germans and Allies fighting a guerrilla war in the Nyassa territory for over a year.

On 18 May 1918 the Director General of the Colonies authorised the local surcharging of the remaining King Carlos I duties in the Nyassa territory. The remaining duties were all from the fourth printing sent to the Nyassa territory

In 1921 a stock of King Manuel II duties was surcharged by the Casa de Moeda (Fig.9), commonly known as the 'Lisbon' printings. The duties were issued in the Nyassa territory but very few covers have been recorded to date.

In 1922 Waterlow & Sons reprinted the King Manuel II duties using new plates. The duties were overprinted 'Republica' and surcharged using the same values as the surcharges applied in Lisbon (Fig.10) – known as the 'London' printings. These duties were never issued in the Nyassa territory, and were intended only for the philatelic market.

The 'Lisbon' surcharges are easily distinguishable from the 'London' surcharges. The duties were withdrawn upon the introduction of the 1922 Pictorial definitive issue.

#### The 1922 Pictorial Definitive Issue

Waterlow & Sons, as with the previous three definitive issues, also printed this issue. Twenty duties were issued in total – eighteen in early 1922 and 2 duties (the 2E and 5E values) on 30 January 1923 (Fig.11). The issue is found with two perforations - 14 to 15 and 12½.

Unlike the other issues of the Companhia, it is somewhat easier to find the 1922 Pictorials used on cover.

This issue remained on sale in the territory until the termination of the Companhia's mandate in October 1929.

#### Conclusion

The stamp issues of the Companhia present an interesting collecting field with something for collectors across the board. The small number of duties issued makes the area eminently collectible for many, giving a reasonable



Fig.9



Fig.10



Fig.11

in 1910. Unusually, the low values are much more sought after than the high value duties as they were printed in very small quantities (Fig.8). Needless to say usage on cover is rare.

prospect of compiling a complete collection of issued duties. For the serious philatelist the various surcharges, spurious issues and forgeries provide a rich field for research, study and collection. Again, I hope that collectors and philatelists will take a good look at a fascinating piece of philatelic history right on our doorstep. As always, happy hunting!

#### Acknowledgement

John Dahl FRPSL has conducted a great deal of research into the various printings of the stamp issues of the Companhia printed by Waterlow & Sons, much of it in various publications. I am indebted to John for leading the way in what is a complex, although deeply rewarding, field of study.

# A ticket to ride



by Alan Drysdall (Royal PS London) and Fernando Torres (Witwatersrand PS)

If you are going to play trains, you have to have a ticket to ride. Between us we have only seven tickets dating from the Second Republic period, but all show features of interest.

The Series A second class ticket illustrated as Fig.1 must date from the earliest days of the Rand Tram when the line extended only from Boksburg to Johannesburg (the station later resited and renamed Braamfontein), i.e. sometime between 17 March 1890, and before 13 October 1890, when the extension to Springs was completed. The number of the ticket, '4', suggests the possibility that it was issued on the day the line was open for public use. The only intermediate stops were then Elandsfontein, midway along the route, and Meisjesschool (Girls School) on the outskirts of Braamfontein/Johannesburg. The name Meisjesschool was almost immediately shortened to School Halt, and later became Jeppe. The hole was punched to record the route authorised and the amount paid. (First and Second Class carriages were reserved for the use of 'whites'.)

When land in Jeppestown was expropriated for the railway, the land owners Ford & Jeppe Co., added a condition that a halt - an unmanned station - be established on the site by the Nederlandsche Zuid-Afrikaansche Spoorweg - Maatschappij (NZASM), which was supported by the community due to its proximity to St. Mary's School, hence Meisjesschool. Elandsfontein was also originally established as a halt. (NZASM Tramway Timetables stated that trains would only stop at halts if requested in good time). Vogelfontein, the site of a coal mine managed by NZASM, changed its name to Boksburg, (after Dr Bok, State Secretary) and as the terminus of the line was a manned station with a ticket office. Park was originally a halt, which evidently was not open when the ticket illustrated as Fig.1 was issued.

The original contract with NZASM, signed in July 1888, provided for three extensions; the 23 km eastward extension to Springs and westward extensions first to Randfontein (19 km), opened on 17 November 1890, and then Krugersdorp (12 km), opened on 10 February 1891. Thus within 12 months the total length of the line had been increased from 27 to 81 km. Further halts that later became stations were established at Jumpers (now Cleveland), Langlaagte, Maraisburg, Florida, Roode-poort and Witpoorje. Krugersdorp was the western terminus and a station that later assumed further importance as the link with the south-western line to Klerksdorp via



Fig.1: The wording on the front translates as: 'This ticket is valid for the line the number of which is cut with the Bell-Punch'. The vertical wording translates as: 'See overleaf'. The wording on the back translates as: 'Our passengers are subject to the provisions for transport adopted by the Railway Company. This ticket must be kept for the journey and be shown on request to the Conductor and to the officials responsible for the supervision of the Company'.

Potchefstroom, etc. These extensions would have resulted in more travel options than could be provided for on a ticket of the type illustrated as Fig.1, hence the use of tickets of a more conventional type as illustrated.

The earliest of the conventional type of railway tickets is illustrated as Fig.2. It was issued at Johannesburg 'Johsburg Park' (Johannesburg Park Station) for a journey to Elandsfontein, travelling first class. The date of issue, '15. SE.', is unfortunately incomplete, but the ticket is numbered 001, which certainly is significant as it was evidently purchased on 15 September 1892, the day Park was upgraded to a station and began issuing tickets. It was presumably kept as a souvenir of the occasion. Elandsfontein, the destination of this particular passenger, was only renamed Germiston on 26 February 1903, by which time the railways were being operated by CSAR. Park was renamed Johannesburg on 4 May 1913, by South African Railways.

The first of the third class tickets to Norvalspont (written as one word in manuscript) was issued at Johannesburg (Braamfontein) (Fig.3). The line south via Bloemfontein and Norvalspont (as it is spelt today) was open from September 1892, so this ticket must date from after that. Johannesburg was the original name of the station that was the western terminus of the Rand Tram. It was resited 600m to the west and formally renamed Braamfontein on 4 March 1913. (The fact that both Park

and Braamfontein were known as Johannesburg in NZASM's days resulted in considerable confusion.)

The second third class ticket to Norvals Pont (printed as two words) was issued at Pretoria (Fig.4). The fare, printed on the ticket, is recorded as '£0.18.11' (i.e. 18s 11d), but the fare written in manuscript on the ticket issued at Braamfontein is recorded as '£2 13. 10'. Both tickets are dated '15 OCT' on the reverse, but in neither case is the year recorded. The more expensive ticket has the words 'For Kimberley' written in manuscript on the reverse. Was this perhaps the through fare?



Fig.2



Fig.3



Fig.4

The purple second class ticket to Norvals Pont (again printed as two words) was issued at Pretoria to a passenger who was charged '£3.11.8' (the amount printed on the ticket) (Fig.5). The reverse bears a printed date, '15 OCT', and the words 'Cape Town' in

manuscript and a signature. The additional words printed on the front above '2de klasse' are 'Voor manspersoon', which would imply that there were separate second class carriages for men and women, but to date we have been unable to confirm this.

Also illustrated as Fig.5 is a through ticket from Roodekop to Maritzburg that was evidently valid for both the NZASM and NGR legs of the route. It is inscribed 'Kleurling OF SUPPLETIE / £1.18.0', and was therefore issued to a person of mixed race, proving that there was segregation on NZASM trains. The last of the Second Republic tickets comprising this very limited group is a first



Fig.5



Fig.6

class ticket issued at Piensaarsrivier, which is 55km due north of Pretoria, for a journey to Pietersburg (Fig.6). This line, which was only completed in 1899, was originally operated by the Pretoria Pietersburg Spoorweg-maatschappij Beperkt, the only Transvaal line not operated by NZASM. However, the Government exercised an option under the concession with NZASM to take over the railways in the event of war being declared or imminent and did so with effect from 13 September 1899, i.e. before hostilities began. NZASM, having been ordered to work the Pretoria–Pietersburg line, which was confiscated by the military, now managed the whole rail network on behalf of the government (Drysdall, 1995, p.5). The Northern Line was operated by Imperial Military Railways from August 1900, but was not open to Pietersburg until after the town was captured by General Plumer on 9 April

1901. The ticket is dated '13.AUG.00' on the reverse. At this time the northern section of the line was presumably still in Boer hands. Was it perhaps issued for the last train to run north from Piensaarsrivier before the British took the town?

One obvious question is why are half the tickets of such a small group to Norval's Pont? – not one would have thought an obvious destination of choice. The answer, bearing in mind the annotations on the reverse of two of the tickets, must be that at least two of these passengers intended to travel to destinations in Cape Province, but it would seem would have had to buy a (CGR) Government Railways ticket to complete their journey. However, this contrasts with the fact that it was evidently possible to buy a through ticket to Pietermaritzburg. Why there is such a difference in price between the two third class Norval's Pont tickets is not obvious. The other interesting point is that all the tickets are 'one way'; does this mean that it was not possible to buy a return ticket?

### The development of the Rand Tram and the railway network

The story of the Rand Tram, a line that has been unkindly described as going from nowhere to nowhere, is an early chapter in the explosive development of the South African Republic (Transvaal) following the discovery of the Witwatersrand in 1886. It is often stated that the name was chosen because the diehard conservative element of the Volksraad regarded railways as an invention of the devil, and their approval was needed before a concession could be granted, but it is more likely that the name was chosen because it was intended that it would be a light mineral line designed primarily to carry coal from east of the Rand to the mines. (The term 'tram' was familiar because many mines used horse-drawn trams to transport ore or coal, etc., over a limited

distance). However, although 'light' the line was standard southern Africa gauge, i.e. 3 ft 6 ins. Coal was an essential commodity as the main source of power on the mines was steam for the winding gear, pumps and stamp mills that were essential as mining developed to greater depths and on an ever-increasing scale. The discovery of mineable coal near Boksburg in March 1887 provided the motivation. There was opposition in the Volksraad and subsequent competition for the contract, which was eventually awarded on 20 July 1888, to NZASM, already involved with the construction of the Eastern Line. The contract provided for the carriage of passengers and goods in addition to coal, and for the working of the Boksburg coalfield. (NZASM always subcontracted construction work; in the case of the Rand Tram the principal contractor was James Butler & Co., in which company George Pauling, South Africa's most famous railway engineer, was a partner).

The 14-ton locomotives were manufactured by Kessler in Germany, imported in kit form and assembled in NZASM's workshops in Elandsfontein. Goods trucks and carriages were also imported, but the interiors of the third class coaches were fitted out locally with wooden benches.

The convenience of the service was immediately recognised by the public, and it soon became a major suburban and even a commuter line with an increasing number of halts. Park became important because it was close to the city centre and provided more convenient access than the original Johannesburg, which is why Park became Johannesburg Park Station and the original Johannesburg station was resited a short distance to the west to become Johannesburg (Braamfontein). The completion of the line south from Elandsfontein via Bloemfontein to link with CGR services was a major breakthrough as

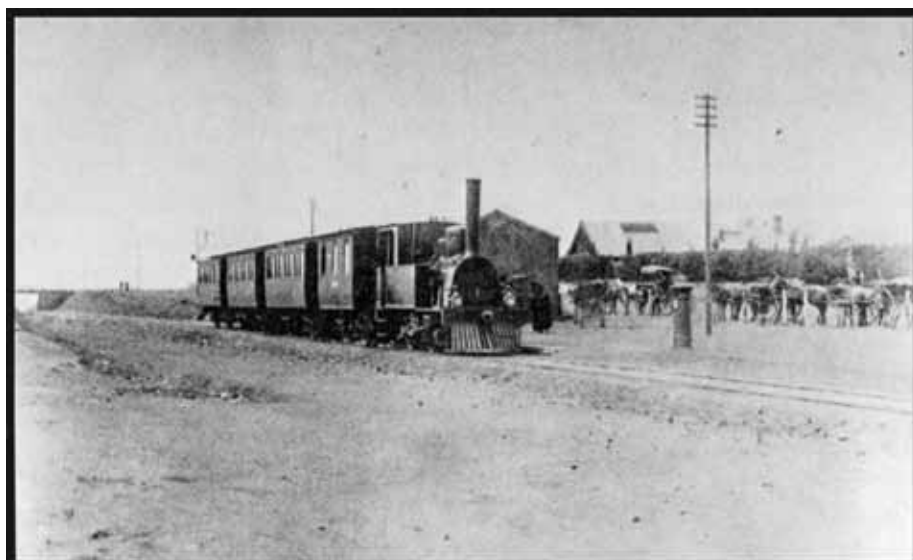


Fig.7 The Rand Tram at Park Halt (Johannesburg) in 1891; note the single-line track and the cast-iron pillar box manufactured by Pleterij Den Haag (De Jong, Van der Waal and Heydenrych, 1988).

far as both long-distance travel and the postal services were concerned. It was now obvious that the section of the line between Elandsfontein and Johannesburg would have to be upgraded with standard rails and sleepers and the track doubled to provide for increased traffic. De Jong, van der Waal, and Heydenrych (1988, p.79) state that: 'On 15 September 1892 the line from the Vaal River to Elandsfontein as well as the double line between Elandsfontein and Johannesburg was opened for traffic'. The Elandsfontein–Boksburg sector was upgraded in 1895, and the rest of the line a year later.

An unresolved contradiction now follows. Various sources record that the first through train from Cape Town reached Park on 15 September 1892. However, as shown in Fig.8 the first train to reach

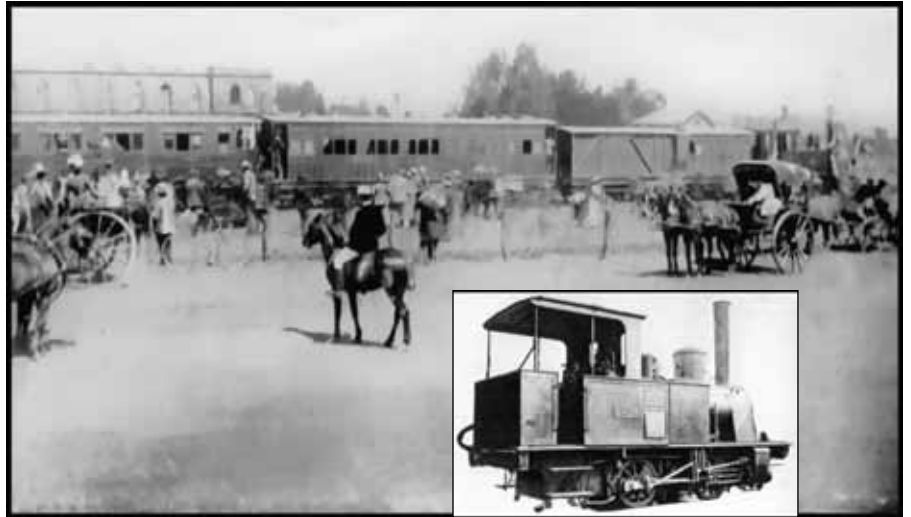


Fig.8: The first train from Cape Town to reach Johannesburg. The final leg of the route from Elandsfontein westwards over the line of the Rand Tram was apparently not completely upgraded; hence the 14-ton Kessler locomotive. The carriages, etc., are CGR rolling stock.



Fig.9: A postcard showing Park Station, Johannesburg, as it was after erection of the building shown in the photograph had been completed in 1897. The locomotive and rolling stock are main-line NZASM types. (Note that the second track terminates at the station).

Johannesburg (Park) from Cape Town was hauled over the final sector of the route by a Rand Tram 14-ton locomotive, presumably because upgrading of the original line had not been completed and could not be used by a main line locomotive. But this interpretation conflicts with the statement quoted in the previous paragraph that upgrading of this sector was completed on the that date.

The rail network was greatly extended by the completion of the route from Elandsfontein to Pretoria (1 January 1893) and the link with the Eastern Line to Lourenço Marques, open for traffic two years later (from 1 January 1895) followed by the line from Aansluiting south of Elandsfontein to Volksrust via Heidelberg and Standerton and the link with Natal Government Railways (NGR) services to Pietermaritzburg and Durban, open for traffic from 2 January 1896.

sent and received via Cape Town for destinations in and via the UK, such as mainland Europe (Fig.10) and North America. NZASM's Chief of Operations, in his annual report for the year 1891, recorded that the railway telegraph service was opened to the public in July 1891, and that stationmasters were empowered to act as postal officials. It was therefore possible to send a telegram or post a letter at any station, hence items of mail on which the franking is cancelled with a straight-line undated station handstamp (Fig.10). Some residents of Lourenço Marques took advantage of the newly established link via Pretoria



Fig.10: 'JOHANNESBURG / BRAAMFONTEIN' station handstamp used to cancel a postal stationery card sent by a NZASM employee to his sister in France. The message, in French, is dated 5 August 1895. The card would have been carried from Cape Town by the Drummond Castle sailing on 7 August, calling at Madeira on the 22nd and reaching Plymouth on the 25th. It was delivered in Ferney Voltaire two days later, a total transit time of only 20 days.

The final major development under NZASM's management was completion of the south-western line from Krugersdorp via Potchefstroom to Klerksdorp. These links replaced all the more important long-distance mail and passenger services operated with mule-drawn stage coaches, and had a profound effect on the postal services, particularly for overseas mail

with Cape Town by addressing mail to the UK and mainland Europe via this route rather than the less frequent Deutsche Ost Afrika Linie (DOAL) route via the East Coast and the Suez Canal (see de Jager and Drysdall, 1999). Illustrated as Fig.11 is a cover sent in October 1894, i.e. before the Eastern Line was completely open for normal traffic (1 January 1895), though there must have been a mail service utilising most of the route as

similar covers franked with a combination of Moçambique and ZAR stamps dated from late March 1894 are known. ZAR was a member of the General Postal Union (later the UPU) from 1 January 1893, and reduced the overseas half-ounce letter rate to the UK to 2½d but kept other overseas rates at 4d until 1 September 1895. Cape Colony was not a member of the General Postal Union (until 1 January 1895) and in sending their mail via Pretoria the residents of Lourenço Marques were taking advantage of a convention between the ZAR and Cape Colony, and had to pay the appropriate ZAR rate as transit postage in accordance with an agreement between the District of Lourenço Marques and the ZAR dating from 1 November 1891. All the recorded covers bear a strike of a Pretoria datestamp (dated for a Sunday) and, with the exception of registered mail, do not have either Johannesburg or Cape Town transit marks; they were evidently carried by a weekly

Thanks to research by John Dickson we now know that it was recorded in *The Times* of 25 June that the *Moor* reached Southampton (not Plymouth) at 9a.m. on Saturday the 22nd. This accords with the backstamps and also with the time of the voyage from Madeira, which was normally three to five days.

The ticket illustrated as Fig.13 is not obviously related to the Transvaal but Rossano Garcia is on the Portuguese side of the Transvaal/Moçambique border opposite Komatiport and there must be a high probability that it was issued to someone travelling from the Transvaal via the Eastern Line. It is not dated, but

like to play trains, so if there is anyone out there who can add to this story we would be delighted to hear from you.



Fig.12: Another cover posted before the whole of the Eastern Line was open for normal traffic. The date in the Lourenço Marques datestamp is unreadable, but the ZAR 4d stamp was cancelled when the letter was sorted in Pretoria on 3 June, 1894. The letter was carried from Cape Town by the Union liner *Moor* sailing on 6 June. Backstamps record transit via London (23 June) and receipt in Lisbon the following day.



Fig.11: Moçambique-ZAR combination franking on a cover addressed to Stendal in Germany posted in Lourenço Marques on 3 October, 1894, forwarded via Pretoria (7th) and the UK and received on the 30th, a total transit time of 26 days. The letter would have been carried from Cape Town by the Union liner *Athenian* sailing on 10 October, 1894, calling at Madeira on the 24th and offloading the mails in Plymouth on the 28th.

service, sorted in Pretoria and forwarded in sealed bags made up for London.

The cover illustrated as Fig.12 was also posted before the whole of the Eastern Line was open for normal traffic, but the actual date is unreadable as the Lourenço Marques datestamp is incompletely struck. What is clear is that the letter was sorted in Pretoria and the ZAR 4d stamp cancelled on 3 June 1894, four months before the cover shown as Fig.11. Backstamps record a route via London (23 June) and receipt in Lisbon the following day. However, Philip Cattell in his listing of the sailings of the Union and Castle Lines (see References) records that the *Moor* called at Madeira on the 19th and reached Plymouth on the 25th. In view of the backstamps this last date must be incorrect.

probably dates from about 1895–1900, i.e. the later years of the Second Republic. It differs in that it is a return ticket, with the two halves separated by a line of rouletting. 'Ida' translates as going, i.e. the outward journey from Rossano Garcia to Lourenço Marques, and the punch hole is evidence that this half was used, but apparently not the return half (inscribed 'volta'), which was valid for only five days. But how was the five days determined if the ticket was not dated? There is one further obvious query; the 1st class conventional-format tickets illustrated in this article are on cream card, the 2nd class are on purple card and the third class on green card; was this in accordance with a southern Africa convention? It is our experience that those who collect stamps



Fig.13: A first-class return ticket to Lourenço Marques issued at Rossano Garcia.

## References

- Cattell, P., undated, *The Union Castle Ocean Post Offices*: Proud Bailey, Heathfield.
- De Jager, O., and Drysdall, A.R., 1999, Overseas mail from the District of Lourenço Marques forwarded via the ZAR: *The Transvaal Philatelist*, v. 34, no. 3 (131), p.76–85.
- De Jong, R.C., van der Waal, G.M., and Heydenrych, D.H., 1988, *NZASM 100; 1887-1899, the Buildings, Steam engines and Structures of the Netherlands South African Railway Company*: Chris van Rensburg Publications, Johannesburg.
- Drysdall, A.R., 1997, *Transvaal; Railway Stamps and Travelling Post Offices*: James Bendon, Limassol, Cyprus, in association with the Transvaal Study Circle.

**MARITZBURG PHILATELIC SOCIETY: leads the way in Kwa-Zulu Natal**

by Aubrey Bowles

The 2015/2016 Club Year was filled with exciting events including the annual Hobbies Fair, and National Stamp Day exhibits in addition to regular club competitions. Cups were awarded for the normal philatelic topics plus for the most improved member and for service excellence to the club.

Club entries at National level continue and we have donated the Sykes Family Memorial Cup as a floating trophy for the Open Class. The Club Entry at SAPDAPEX 2016 will be The Changing Face of Pietermaritzburg (*uMgungundlovu* - past, present and future), and we are challenging other clubs to compete against us in the Open Class.

Meetings of the Club attracted members of the public and visitors from Durban, Highway and Howick Societies.

Speakers included Roger Porter, Doctors Rob McLennan-Smith, Mike O'Connor, Cedric Bremner, and Prof Elwyn Jenkins.

In February we hosted Dr Rob McLennan-Smith. As a descendent of Sir Rowland Hill he possesses much in the way stamps, letters, postal history and memorabilia which has been passed down within the family. This incredible collection was started by Rob's father 40 years ago and further enhanced by Rob. Happily, talks of this nature help encourage club participation by members and provide much needed media publicity for the hobby.

Club activities included a Sales, a Circuit Book Scheme and a Thematic Group which meets on the first Saturday of the month.

We are very proud of the fact that we are one of the few Societies or Clubs to record a growth in membership during the past year.



Dr Rob McLennan-Smith presenting *The Mulready Caricatures* - featured in this issue of *The SA Philatelist*.



President Dave Wyllie thanking Rob McLennan-Smith, with a book on stamps celebrating the centenary of the death of Sir Rowland Hill.



Peter Dobeyn receiving the Chairman's Cup from outgoing President Dave Wyllie.



Incoming Club President Fred Handman proudly wearing the chain of office.

**TROPHY HUNTING**

As part of the East Rand Philatelic Society AGM, held Saturday afternoon, 27 February 2016, a number of trophies were awarded to members. The successful recipients, lined up behind their hardware are, left-to-right, Peter van der Molen, *Best Country Trophy* for his postcard exhibit at the 2015 National; Alan Rose, *Marge Viljoen Trophy* for the best open class exhibit; Jimmy Mitchell, *the Robertson Stamp Company Trophy* for the best award at Interclub level; Jan Bakker, *The Mitchell Trophy* for the best senior exhibit and the *Committee Trophy* for a postal history exhibit and the ERPS Tray, for the best one frame exhibit at interclub level went to Emil Minnaar.

Front; Abigail Mitchell, *Junior Trophy* for the best thematic exhibit.



Not in the photograph: Tom Dooley, *Suklje Award* for service to the society and Trefon Katakuzinos, the *Leonard Award* for the best intermediate exhibit.

**Faroe Islands Stamps**

- April and May 2016

EUROPA 2016: Think Green



Nólsoyar Páll



Nordic Issue 2016: Faroese Food Culture

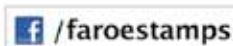


40th Anniversary of the Faroese Postal Service



Posta Stamps  
Óðinshædd 2  
FO-100 Tórshavn  
Faroe Islands

Tel. +298 346200  
stamps@posta.fo



Visit our NEW webshop:

en.stamps.fo

CN-DE-DK-ES-FO-FR-UK



**TO ALL SOCIETY SECRETARIES:**  
Please advise *The SA Philatelist* Editorial Board of your **FUTURE MEETING** programme so that the information can be published **timeously**.

**STAMP FAIRS:**

Western Cape and the KZN Stamp Fairs are run independently.

All **SAPDA** run fairs feature 'mini-auctions'. Please note that only the **Gauteng and Durban (Bluff)** fairs are run by SAPDA - with associated SAPDA control over dealers, and non-SAPDA dealers who also trade within SAPDA rules. The other fairs are run independently by societies.

SAPDA views these Fairs as a development and testing source for both new member and collector growth.



• **PRETORIA STAMP FAIR:**

1<sup>st</sup> Saturday of every month; Denis Adami Hall, Wren St, Queenswood, Pretoria. Contact Paul van Zeyl on 076 124 9055.

• **TSHWANE EXHIBITIONS:**

1<sup>st</sup> Saturday of every month; Afrikaanse Filatelievereniging Pretoria. At the Denis Adami Hall, Wren Street, Queenswood, Pretoria. Contact Rev Cassie Carstens: 012 653 2279.

• **KYALAMI STAMP FAIR:**

Directions: From the N1: Take the R51 Allandale Rd turn off, drive 4.5km along Allandale Rd towards the Kyalami Race Track (west). At the Race Track turn right on the R55 Kyalami Main Rd - drive 1.6km north to the M71 road to Bryanston. Turn left on to the M71 and drive 2km to Maple Rd. Turn right into Maple Road and drive 1km to the Kyalami Country Club entrance on the right.

• **SANDTON STAMP FAIR:**

2<sup>nd</sup> Saturday of every month; **433 Maple Road, Kyalami**. Contact Clinton Goslin: 083 272 9367. also known as the Kyalami stamp fair.

• **EAST RAND STAMP FAIR:**

**NOTE THE VENUE.** Last Saturday of all months, except December; at **Edenvale Bowling Club**.

• **KZN STAMP FAIR:**

Last Sunday of all months, except December. Kloof Country Club, Victory Rd (off Abrey Rd), Kloof. Contact: Beverley McNaught-Davis 031 904 1522, 081 270 2873, email: [mcnd@telkomsa.net](mailto:mcnd@telkomsa.net)

• **BLUFF STAMP FAIR:**

1<sup>st</sup> Saturday of the month at the N.G. Church Hall, Lighthouse Road, Bluff, Durban, from 08h00 to 13h00. Contact: John Bracey Tel.: 031 266 1020 Cell: 079 465 7468 email: [bracon@eastcoast.co.za](mailto:bracon@eastcoast.co.za)

• **DURBANVILLE STAMP FAIR:**

Venue: D.R. Church Hall Durbanville - Bergsig, corner of Boland Way & Protea Way. Directions & map available on request. Contact: Ken Joseph or Robert Harm. cell: 028 840 2160 or 072 597 1287.



WITWATERSRAND  
PHILATELIC SOCIETY  
P O BOX 42346 MARSHALLSDOWN 2007

Venue: Country Club Johannesburg, Napier St, Auckland Park. For further info-contact the President: Herbie Schaffler RDPSA 082 722 7604. **Dates for Society Meetings 2016 always on a Wednesday at 20h00**

- 08 June Grand Challenge Match
- 13 July Open Class Exhibit Evening
- 10 August One Frame Evening
- 14 September Annual Auction
- 12 October Favourite Cover/s
- 9 November Second Competitive Evening
- December Presidents Evening

**EDENVALE PHILATELIC SOCIETY**

Meet 1<sup>st</sup> Saturday of every month  
Edenvale Community Centre at 2pm till 4pm  
Meetings consist of club competitions, workshops, themed events and many other fun activities. Membership is varied and mainly consists of general stamp collectors. Light refreshments are served. All are welcome - from the novice to more advanced collectors.

Our Facebook page allows club activities to continue 24/7 - search for *Edenvale Philatelic Society* - all welcome to join. Contact: Colin Bousfield 082 309 8656

**PHILATELIC SOCIETY OF JOHANNESBURG**

President: Clive Carr, Tel. 011 789 6354.  
Meetings: 19h30, Third Wednesday of the month, at Blairgowrie Recreation Centre, Park Lane, Blairgowrie.

Exhibit programme for meetings 2016 - 2017:-

- Jun 15: Mini Exhibits, 1 to 16 pages.
- Jun 29: 5<sup>th</sup> Wed - Invitation / society visit
- Jul 20: Foreign.
- Aug 17: Southern Africa.
- Aug 31: 5<sup>th</sup> Wed - Society auction
- Sep 21: Preview of National Exhibits, World at war & back of the book.
- Oct 19: My favourite (Maximum of one frame) and thematic exhibits.
- Nov 16: Intersociety quiz, invited exhibits and end of year function.
- Nov 30: 5<sup>th</sup> Wed - Festive Function
- Jan 18: Africa & its islands.
- Feb 15: Open to all categories
- Mar 15: AGM & invited exhibits.

Postal address for the PS of J - P O Box 131037, Bryanston 2021, South Africa.

**WEST RAND PHILATELIC SOCIETY**

P.O.Box 198 Florida Hills 1716.  
Contact: Alistair Mackenzie (Chairman)  
Tel: 011 768 7565  
or Ian Walker (Secretary) Tel: 011 4721161

**EAST RAND PHILATELIC SOCIETY**

VENUE: The Victorian Secret, corner Russel/Woburn St, Benoni; last Saturday of each month, at 2:00pm. Contact: Jimmy Mitchell on [jimmy.hcmitchell@gmail.com](mailto:jimmy.hcmitchell@gmail.com)

**THEMATICS SA PRETORIA CHAPTER**

Meeting 1<sup>st</sup> Saturday of each month at the Adami Stamp Fair @ 10:15. Vibrant & active group of attendees - lots of expertise amongst them.  
Contact: Cassie Carstens 012 653 2279.

PRETORIA, MPUMALANGA, LIMPOPO

**PRETORIA PHILATELIC SOCIETY**

Meets at 7:30pm on the first Monday evening of the month at Statech Centre, St. Alban's College, Clearwater Street, Lynnwood Glen.

- Mike Dove (President) 012 348 9393
  - Alex Visser (Deputy President & Secretary) 082 922 2927
- Monthly newsletter. Specialists on traditional philately, postmarks and postal history.

**AFRIKAANSE FILATELIEVERENIGING VAN PRETORIA**

Vergader elke 3de Saterdag van die maand by Glen Carpendale se Seëlwinkel in Kilnerpark @ 10:00. Klein maar baie aktiewe en produktiewe groepie lede wat gereeld bywoon; konsentreer veral ook op tematiese en oop versamelings. Nuusbrief 'Die Posduif' verskyn elke maand.

**POLOKWANE PHILATELIC SOCIETY**

Meets every last Tuesday of the month, Contact: Peter Gutsche, PO Box 11933, Bendor Park 0713. Tel 083 276 1124. email: [pmgutsche@mweb.co.za](mailto:pmgutsche@mweb.co.za).

**CENTURION STAMP CLUB**

This society is for the 'morning glories' who do not wish to travel at night. Meetings on 2<sup>nd</sup> Friday of every even month (June, August, October etc) at the Dutch Reformed Church, Wierdapark South, Centurion. Concentrate on African countries, and a letter of the alphabet just for fun (one-page).

Comic Corner

**Stamps** that make us **SMILE**

Episode 36 of : *Errors on Stamps...*  
by Volker Janssen, Fish Hoek Philatelic Society and Royal PS of Cape Town

**CONFUSING MAP**



The SEYCHELLES, a group of 84 Islands east of Africa issued a stamp in 1976, during the process of Independence, depicting the Rural Posts of the Seychelles.

It shows a map with most parts of the main island Mahe.

The Capital Victoria is incorrectly named Bel Hombre and the city which was named Bel Hombre is the now named Cascade which is incorrect. To complete the confusion on this stamp, the real geographic location of the city Bel Hombre is not shown at all, not even under a wrong name.

*International Philatelic Event*

21 - 25 October '16

PHILATAIPEI 2016 FIP Patronage  
CLOSING DATE FOR ENTRIES 15 MARCH '16  
Commissioner: Emil Minnaar RDPSA

Exhibition news invited for all future local events

**BELLVILLE  
PHILATELIC SOCIETY**

Monthly meeting, 2<sup>nd</sup> Wednesday. Auditorium of the Bellville Library, Charl van Aswegen Road, Bellville. Meetings start at 19h00 to 21h00. Meetings consists of club cup competitions, workshops and fun evenings where specific themes selected for the evening. Members from other societies are regularly invited. *Chairperson:* Wobbe Vegter; 072 425 6301; [wvegter@xsinet.co.za](mailto:wvegter@xsinet.co.za) *Secretary:* Reanie de Villiers; 082 567 0353; [philately@netpoint.co.za](mailto:philately@netpoint.co.za)  
website: <http://bellvillephilatelic.tripod.com>  
Contact the Secretary for Programme details.

**THE ROYAL PHILATELIC  
SOCIETY OF CAPE TOWN**

Meetings are held every 2<sup>nd</sup> and 4<sup>th</sup> Monday of the month at 8.00pm at the Athenaeum, Camp Ground Road, Newlands. Visitors are always welcome. Contacts: Mary Rogers 0729461767 or 021 5582662. Andrew McLaren 0737542856. 021 6844361 (work).

**STELLENBOSCH  
PHILATELIC SOCIETY**

Meeting - 1<sup>st</sup> Tuesday of the month at 19h00. *Venue-* Le Donjon, La Societé, La Clemence, Webersvallei Road, Stellenbosch. *Activities include internal & external exhibitions, visiting speakers, informative, instructive talks and demonstrations. Monthly Newsletter with information on local philatelic activities: exhibitions, stamp fairs, society meetings; includes semi technical articles on matters*



*of philatelic interest authored locally or abstracted from international journals.*

**Visitors are welcome  
at all meetings**

**PAARLSE FILATELISTE**  
Sedert 1951



Die Paarlse Filateliste vergader elke maand op die tweede Donderdag van die maand om 19h30.

*Filatelite, seëlversamelaars en besoekers is baie welkom. Vergaderings is baie informeel en daar word lekker gekuier en daar is altyd iets te leer (en te ete). Vir meer inligting oor die program en vergaderplek kontak gerus vir: Gawie Hugo: 083 956 2410 [gawiehugo@gmail.com](mailto:gawiehugo@gmail.com) of Riaan Crafford: 022 4824005 n/u [craffies@telkomsa.net](mailto:craffies@telkomsa.net) Ons vergader adres Nuwe Eskdale Straat, De Soete Inval, Suider Paarl.*

**FISH HOEK  
PHILATELIC SOCIETY**

Founded in 1954 and still promoting philately in the 'Deep South' of the Cape Peninsula. Circa 20 – 30 members and often a few guests gather once a month. FHPS reaches a wider audience on the internet since launching their website. Please have a look and maybe get ideas or inspiration for your own society. The society meets every 1<sup>st</sup> Tuesday at 19h30 at Civic Centre, Minor Hall, Recreation Road, Fish Hoek. *President:* Brian Franklin email: [info.fhps@info](mailto:info.fhps@info).

**Website:** [www.fhps.info](http://www.fhps.info) FHPS  
*Secretary:* Volker Janssen.



**DE POSBOOM  
FILATELIE VERENIGING**

Tweede Maandag van elke maand om 7nm Posbus10647. Danabaai. 6510.

Jaarlíkse Algemene Vergadering: November  
*President:* Jack Visser 082 332 5353. Tel / Faks: 044 6903030  
E-pos: [jackvisser@yahoo.com](mailto:jackvisser@yahoo.com)  
*Sekretarise:* Gerrie Conradie (082 952 6700)  
Tel / Faks 044 6981074 E-pos: [gajcon@gmail.com](mailto:gajcon@gmail.com)

**PORT ELIZABETH  
PHILATELIC SOCIETY**

- Dave Brown (*Acting President*). 041 360 4025.
- Rodney Maclachlan (*Secretary Treasurer*) 072 619 5409.

*This society meets at Bible Society House, 31 Cotswold Ave, Cotswold.*



*always on Monday evenings:*

6 June, 4 July, 1 Aug, 5 Sept,  
3 Oct, 31 Oct (*Venue not available on 7 November*), 28 Nov or 5 Dec.

**MASHONALAND  
PHILATELIC SOCIETY HARARE  
ZIMBABWE**

Meetings - 9am, 3<sup>rd</sup> Saturday monthly at the Orchid Society Hall, Mukuvisi Woodlands, Hillside Road (off Glenara Avenue South), Harare. Stamp displays, talks, advice, auctions, swapping and socialising.

*Contact:* Mike Fox, [tallyho@mango.zw](mailto:tallyho@mango.zw)  
landline 495408; cellphone 0772 376994

**THE PHILATELIC SOCIETY OF  
KWA-ZULU NATAL**

Meetings are now held at the Classic Motorcycle Club, 137 Tara Road, Bluff, Durban at 10h00 on the 2nd Saturday of the month.

**Contacts:** Ted Brown (*President*) 083 284 6554  
Zbigniew Kawecki (*Vice-President*) 082 968 6888  
Email [zeptepi@3i.co.za](mailto:zeptepi@3i.co.za)

Trevor Harris (*Secretary*) 082 377 8465  
Kraft von Aulock (*Treasurer*) 031 2629162

**'All are welcome'**

*'Stamp Exhibitions' with a theme of what to do and what not to do to achieve success...*



**HIGHWAY  
PHILATELIC SOCIETY**

**The German Club** - Barham Road, Westville. *Open invitation to members of all the Philatelic Societies and members of the public to join us for our meetings held on the SECOND Saturday of every month.*

*President:* Ian McMurray.  
email: [ianjarvismcm@gmail.com](mailto:ianjarvismcm@gmail.com)

*Study Groups*

**EUROCIRCLE  
STAMP STUDY**

Meetings in the Captain's Table at Woodmead - last Wednesday of each month at 20h00 (except December).

**TBVC STUDY GROUP**

*Contact:* Chairperson: Jan de Jong. 011 839 2031 [djhome@iburst.co.za](mailto:djhome@iburst.co.za). Secretary Eugene du Plooy; Connie Liebenberg, editor of the Newsletters. Meeting 1st Saturday of the month at 09:15am at the Adami Stamp Fair in Pretoria. email: [eugene@umalusi.org.za](mailto:eugene@umalusi.org.za) PO Box 8727, Centurion 0046. or Connie Liebenberg. P O Box 33378, Glenstantia 0010. Tel: 012 345 3616. email: [jacoli@mweb.co.za](mailto:jacoli@mweb.co.za)

**RSA SEËLSTUDIEGROEP**

Vergader elke 2de Woensdag van elke onewe maand (Januarie, Maart, Mei, Julie ens) by Filateliedienste in Silverton. Doen uitstekende studie en navorsing en publiseer 'n gereelde maandelikse nuusbrief, 10vm.  
Connie Liebenberg. epos: [jacoli@mweb.co.za](mailto:jacoli@mweb.co.za)



Established in 1924

**MARITZBURG  
PHILATELIC SOCIETY**

**The Club** meets on the third Monday of every month at 16h00. The venue is St Mathews Parish Hall, 115 Hesketh Drive, Hayfields, Pietermaritzburg

**The Thematics Group** meets on the first Saturday of every month at 09h00.

**The Executive Committee** meets on the first Saturday of every month at 11h00.

*Venue:* 'Burncree' 26 Maud Avenue, Scottsville

**President:** Fred Handman. 033 239 5684.

email: [fredhm@iafrica.com](mailto:fredhm@iafrica.com) 083 661 4210.

**Treasurer:** Heather Wyllie.

**Secretary:** Aubrey Bowles. 082 558 0283.

email: [burncree45@telkomsa.net](mailto:burncree45@telkomsa.net)

*Publicity & Monthly Newsletter, information on Society activities can be obtained from Aubrey Bowles.*

- Membership Secretary - Ron Buchel
- Circuit Book Manager - Gordon Bennett
- Club Competitions and Speakers - Tony Evans
- Catering Officer - Val De Jager
- Library Assistant - Joyce Hulse
- New Members - Julia Evans
- New Stamp Issues - Mike O'connor
- Liaison Officer - Dave Wyllie
- Librarian (Ad Hoc Committee Member) - Graham Bruce

**HIBISCUS COAST  
PHILATELIC SOCIETY**

Louise Oswin Residence, 1 Beach road Southport 4230. PO Box 228. Anerley 4230.

**Meetings:** 3<sup>rd</sup> Saturday of the month at 14h00.

**Contact:** Noel Lavery: 039 695 1642, Cell 082 440 5501. e-mail [noel@accessweb.co.za](mailto:noel@accessweb.co.za)

**Secretary:** Louise Oswin. Tel 039 681 3265

cell 079 505 6044 email: [oswin@telehost.co.za](mailto:oswin@telehost.co.za)

**EAST LONDON  
PHILATELIC SOCIETY**

**Meetings:** 4<sup>th</sup> Thursday of the month at 19h30. Berea Gardens, The Heritage Hall, 70 Jarvis Rd. Berea East. **Contact:** Dave McWilliams: 043 748 1378, Cell 082 898 7082.

e-mail [davehmcwil@lantic.net](mailto:davehmcwil@lantic.net)

**Secretary:** J.Muller. Tel 043 721 0327.

*Smalls*

*Small advertisements are accepted from Federation affiliated members at no charge. Ads can be inserted for two consecutive issues. Maximum 30 words. Material must be typed or printed for clarity, and the home society of the advertiser indicated. (Not necessarily for publication). Dealers and non-affiliated advertisers will be charged for classified advertisements at the rate of R50 per column cm per issue. Copy should be sent timeously - see page 39 box for deadlines and addresses. In all instances insertions will be at the discretion of the Committee.*

**WANTED:** Philatelist looking to buy Homelands commercial covers. *Contact:* Andrew Fischer, [kiongacollector@gmail.com](mailto:kiongacollector@gmail.com)

**EXCHANGE:** An Argentine collector looking for information and local stamps and covers to exchange. *Contact:* Alois Filipan, Mendoza Nº.560, Lanus. C.P. 1824, Prov. Bs Aires. Argentina.

**EXCHANGE:** A young Brazilian collector looking for information and local stamps and covers. *Contact:* Anselmo Oliveira, Rua Hum, nº 24, Jacobina I. Cep: 44700-000 – Jacobina-Bahia-Brasil.

**EXCHANGE:** searching for serious philatelists / exchange partners. I do collect ONLY MNH stamps and maxicards, FDCs, etc. *Contact:* Miroslav Legat, Belo Horizonte, Brazil. email: [m\\_legat@hotmail.com](mailto:m_legat@hotmail.com)

If all you see is stamps...



visit **Sandafayre.com**

Stamp auctions for collectors since 1976

1000's of lots from \$30 to \$30,000

Unique Weekly Auctions



# The Prodigious Achievements of Cecil John Rhodes (1853 – 1902)

by Bryan McGee and Colin Whittle



Fig.1

In the furore regarding the statue of Cecil John Rhodes at Oriel College, Oxford (Fig.2), following the removal of his statue from the campus of the University of Cape Town (Fig.3), little has been said

about the prodigious achievements of the man in his short 48 years of life and few have defended his reputation. Men of such huge ambition, and sometimes ruthless pursuit of objectives, are rarely loved, but this does not diminish their contribution to history.

At his death the following words were written (Fig.4): *'For good or evil he ranked among the dozen foremost men of his day. .... After the Pope, the Kaiser and the Tsar, there were few contemporary statesmen who commanded as much attention, who roused as much interest as the man who has passed from our midst while still in his prime.'*

The Rhodes Trust which distributes the Rhodes Scholarships, of which over 7,000 have been awarded, is only one of his many legacies which have benefitted numerous people in southern Africa and beyond. Some of the accusations levelled against Rhodes' memory are flawed if one considers that in his last Will and Testament dated July 1<sup>st</sup> 1899, paragraph 21 states: *'No student shall be qualified or disqualified for election to a scholarship on account of his race or religious opinions'*.

When Rhodes was Prime Minister of the Cape Colony (Fig.5) the qualifications for suffrage applied to all males, regardless of race. The qualifications were the ability to write one's name and have assets of at least £75 (albeit increased from £45 during his tenure). Discrimination then was primarily confined to females, as it was almost universally at the time! These terms of suffrage only expired with the South Africa Act of the British parliament, passed in Westminster in September 1909, seven years after the death of Rhodes.

In his short thirty year career Rhodes added nearly a million square miles to Britain's African Empire and gave his name to a country larger than England, Germany, France and the Low Countries combined – Rhodesia. By the age of 37

he was both Prime Minister of the Cape Colony, Founder and Chairman of De Beers, Consolidated Goldfields and The British South Africa Company (Fig.6). Inevitably his



Fig.2: Rhodes statue, Oriel College, Oxford



Fig.3: Rhodes statue, University of Cape Town



Fig.4: Rhodes Memorial, Cape Town



Fig.5: Cape Parliament Building and Parliamentary Emblems

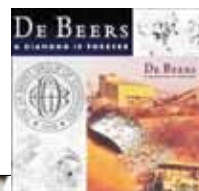


Fig.6. Corporate Emblems and Logos of De Beers, Gold Fields and the BSAC

rise to wealth and power created resentment and opposition from those who did not share his vision.

Rhodes was a man of the late Victorian era (Fig.7) when western, and particularly British, power and influence were at their zenith with commensurate confidence exuded by the leaders. He is now being judged at a time when western values are being questioned and undermined. Could it be argued that the privileges we enjoy today are largely the result of the striving of our predecessors, like Rhodes?

Rhodes in his quest for power never resorted to genocide that other colonial powers adopted in, say, South West Africa (Namibia), Belgian Congo or Algeria.



Fig.7. Queen Victoria

In fact he was held in awe and some affection by the native tribes with whom he dealt in his colonisation of the Rhodesias (Fig.8). Perhaps the biggest blunder of Rhodes' career was his tacit support of the raid in 1895/6 by Dr Leander Starr Jameson which effectively precipitated the 2nd Anglo-Boer War (Fig.9).

## INITIATIVES

Among the many initiatives Rhodes spearheaded were in the fields of:

• ARCHITECTURE

He sponsored Herbert Baker (later Sir) to study classical architecture and then come to the Cape to create a local style for the planned public buildings. Since there were no indigenous buildings, he took his cue from the celebrated Cape Dutch style which he applied with great success. De Groote Schuur, which Rhodes bequeathed as the official residence of the Prime Minister and later, State President, is a fine example of this (Fig.10). After the death of Rhodes, Baker went on to design St George's Cathedral in Cape Town and the Union Buildings in Pretoria as well as numerous churches, chapels and homes for the 'great and the good'. The estate for the Grosvenor family at Westminster in the Orange Free State was the most significant of the private commissions. Even after he had left South Africa, Baker remained hugely productive, designing South Africa House in Trafalgar Square and partnering in the design of many government buildings in New Delhi.

began a programme of restoration of these historic buildings (Fig.12).

• EDUCATION

Apart from the Rhodes Scholarships he endowed Rhodes University in Grahamstown in the Eastern Cape (Fig.13). Rhodes also bequeathed 'the sum of £100,000 to my old college, Oriel College, free of all duty whatsoever', which was an immense sum of money at the time.

• EMPLOYMENT

In 1892, following the devastation of the Cape's vineyards by the Phylloxera epidemic, Rhodes financed The Pioneer Fruit Growing

bought farms in Groot Drakenstein, Wellington and Stellenbosch with the intention of exporting deciduous fruits. A year later, he bought Rhone and Boschendal and commissioned Sir Herbert Baker to build him a cottage there. The successful operation soon expanded into Rhodes Fruit Farms, and formed a cornerstone of the modern-day Cape fruit industry which provides employment for many thousands of people.

• LIFESTYLE

Rhodes undoubtedly had an almost insatiable appetite for power but this was not reflected in his personal life. He entertained in style not only the 'great and the good' at his official residence, Groote Schuur, but was equally generous towards the needy. His seaside cottage in Muizenberg, where he died, was and remains, the most humble and unpretentious property in the vicinity. The house that he proposed to build there was put on hold so that the funds could be assigned instead to the Scholarships he planned.



Fig 8. Rhodes makes peace with the Matabele; Raising the flag in Matabeleland; Hoisting the flag, Fort Salisbury



Fig.9: Leander Starr Jameson and Boer War combatants



Fig.10: Groote Schuur, Official residence of the State President



Fig.11: Kirstenbosch and UCT Campus on the slopes of Table Mountain



Fig 14. Past President Nelson Rolihlahla Mandela

Even President Mandela (Fig.14) recognised Rhodes's significance as 'that great entrepreneur' in a former era and was happy to have his name associated with the Mandela-Rhodes Foundation.

After Rhodes' death in 1902, at the age of 48, he was buried in the Matopos Hills, Rhodesia, what is now Zimbabwe (Fig.15).



Fig 15. Rhodes' funeral train passing through Mafikeng, and his grave in the Matopos Hills

Rhodes was a pioneer in the creation of 'garden cities' starting with what became Kimberley. He was convinced that affection would grow for the new land if visitors were to experience beautiful buildings and gardens.

• CONSERVATION

Rhodes amassed a huge tract of land on the eastern slopes of Table Mountain which he bequeathed to the people of South Africa to protect it from uncontrolled development. The unrivalled Kirstenbosch Botanical Gardens form part of this estate and the University of Cape Town another (Fig.11). He acquired several semi-derelict Cape Dutch properties such as Vergelegen and Boschendal and



Fig 12. Vergelegen and Boschendal

Company at Nootgedacht, a venture created by Harry Pickstone, an Englishman experienced in Californian fruit-growing. The shipping magnate Percy Molteno undertook the first successful refrigerated export to Europe and in 1896, after consulting with Molteno, Rhodes



CAN'T FIT Fig 13. Rhodes University, Grahamstown



# SPINK

LONDON  
1666

## THE PHILATELIC COLLECTOR'S SERIES SALE FEATURING THE TALBOT COX COLLECTION OF SWAZILAND 7 JULY 2016 | LONDON



For more information contact David Parsons or Ian Shapiro:

Tel: +44 020 7563 4072 | Fax: +44 020 7563 4085 | Email: [dparsons@spink.com](mailto:dparsons@spink.com)

Tel: +44 020 7563 4000 | Fax: +44 020 7563 4085 | Email: [ishapiro@spink.com](mailto:ishapiro@spink.com)

69 Southampton Row | Bloomsbury | London | WC1B 4ET



#SPINK\_AUCTIONS WWW.SPINK.COM