

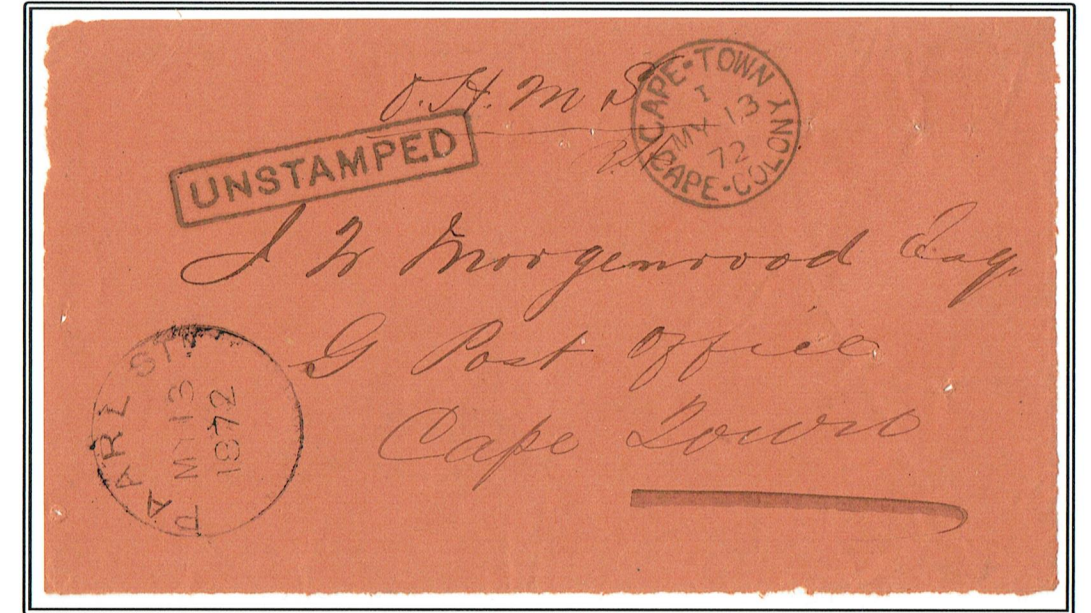
CAPE TOWN RAILWAY

The Wellington line via Eerste River and Paarl was completed by November **1863** and the first train left Cape Town on 4 November at 09:30

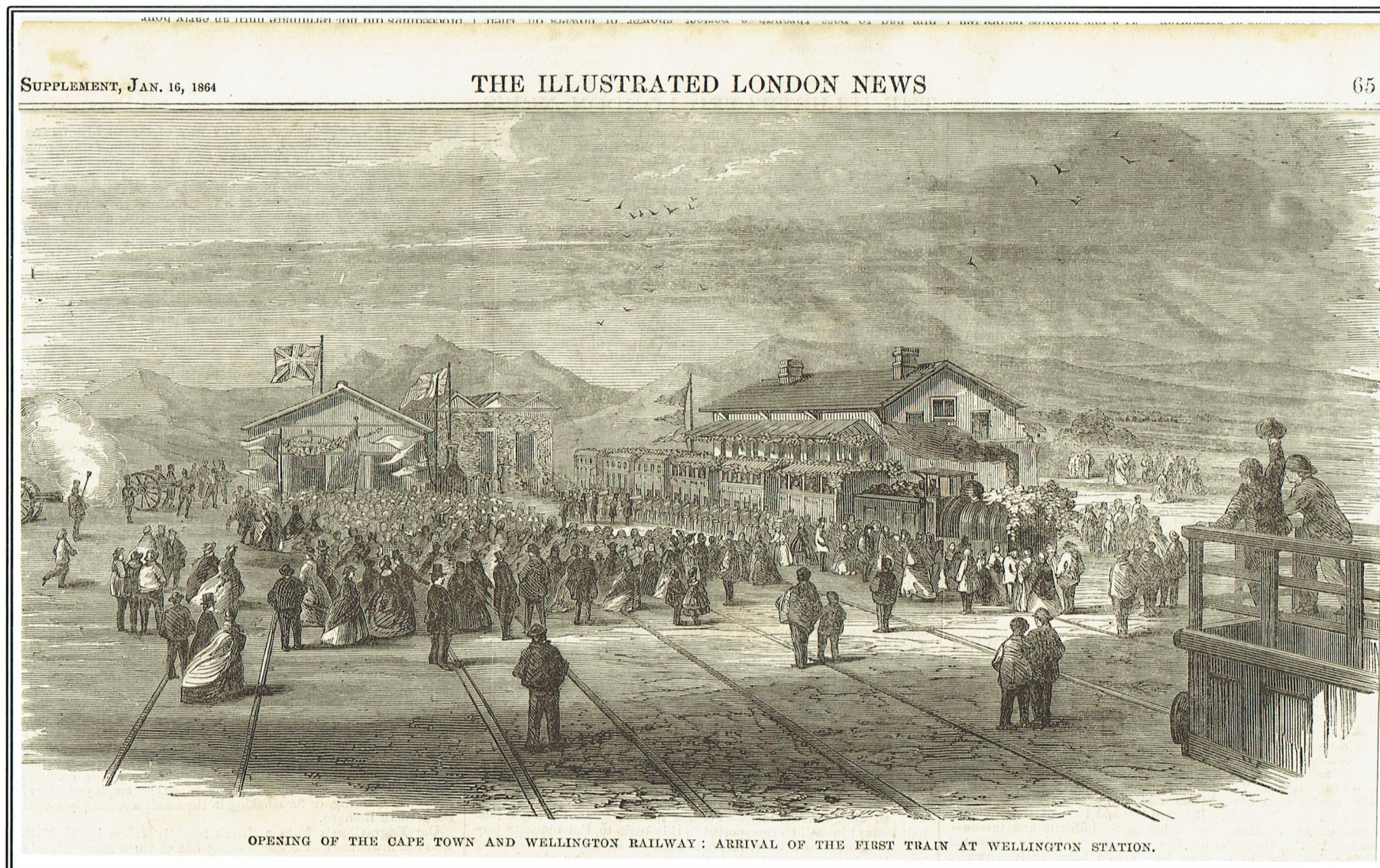
A second set of parcel stamps were issued in **1868**



Large scroll letters "CTR" in the background with the figures of value in "Fancy" font
Corner ornaments present as well as a 'lozenge' ornament type printed above and below value figures



Cover front endorsed O.H.M.S. with a cds of Paarl stn, the office of origin, dated 13 May 1872 and arrival cds of Cape Town Colony dated 13 May 1872



Original wood engraved print images from a **rare, retained** copy of "The Illustrated London News" of 16 January 1864



CAPE GOVERNMENT RAILWAY – 1873 TO 1910

The 1871 discovery of diamonds in Kimberly, and a subsequent diamond rush, gave momentum to the **development** of the railways. In 1872 the Cape Prime Minister presented plans for a huge network to **connect** the main ports to the interior, the diamond fields and other provinces

Purchase of all existing lines were implemented that gave rise to the founding of the **Cape Government Railway (CGR)** in 1873

CGR **stationary** was designed and printed together with new parcel stamps



Two unique accepted De La Rue essays drawn on tracing paper in pen and ink
The eventual stamp design was in 'portrait' format rather than the 'landscape' format of the essay

Top: Grey-wash background

Bottom: Grey-green wash background



(T. 119.)

CAPE GOVERNMENT RAILWAYS.
GOODS DELIVERED TO CARRIERS.

To M Jackson Co STATION, _____ 18__

of _____

I hereby certify that I have delivered in good condition on your account to Wagon Driver _____ the following Goods:—

From.	Particulars of Goods and Articles.	Weight. lbs.	Rate.	Freight and Charges.
	5 bags Sugar	1130		
	6 Flour	600		
	7 @ 2 lbs	600		
188	69 1 bag Rice	76	330	
	70 1 " " "	150		
	71 1 @	57		
	72 1 bag	28	231 (stamped with Rice)	
		3900		
		2330		

The Carrier has paid the full amount of £

(Signed) _____ Station Master.

J W Klemm

CGR stationary form T. 119 - Goods Delivered to Carriers. No date and station completed but most probably late 1880's

CAPE GOVERNMENT RAILWAY – 1873 TO 1910

The rough usage to which parcels were put make it almost impossible to acquire fine used copies of these stamps
 New parcel stamps were printed and issued in 1876



Interpanneau tête-bêche gutter pair
 Services with a "S"
 Large scroll letters "CRS" in the back-
 ground with the figures of value in
 "normal" font
 Corner ornaments present as well as a
 'lozenge' ornament type printed above
 and below value figures
 Perimeter of sheets were not perforated

(T. 80.)

CAPE GOVERNMENT RAILWAYS.
MIDLAND SYSTEM.

The Railway Department hereby gives notice:

RECEIPT NOTE—FOR GOODS TO BE FORWARDED.

Received from Barrow Station, June 19th 1891 188

Received from Jacobus Co Willowmore

the following Articles. per J. M. M. Waterlow & Sons Limited, Print London Wall, London.

Number of Truck.	No. of Invoice.	Consignee.	Address.	Marks and Description of Goods.	Weight, lbs.	Rate.	£	s.	d.	Who Pays Carriage.
				<u>1349s. Mohan</u>	<u>3889</u>					<u>Consignee</u>

To be conveyed to the usual Railway Station for articles so addressed, subject to the conditions printed at the back hereof.
 The Goods must be carefully examined and weighed before this receipt is given. Any damage must be carefully specified on this receipt.

J. M. M. Clerk. [OVER]

CGR form T. 80 – Receipt note – for goods to be forwarded in this instance from Willowmore station to Baroda station issued dated 19 June 1891

CAPE GOVERNMENT RAILWAY – 1873 TO 1910

WESTERN LINE

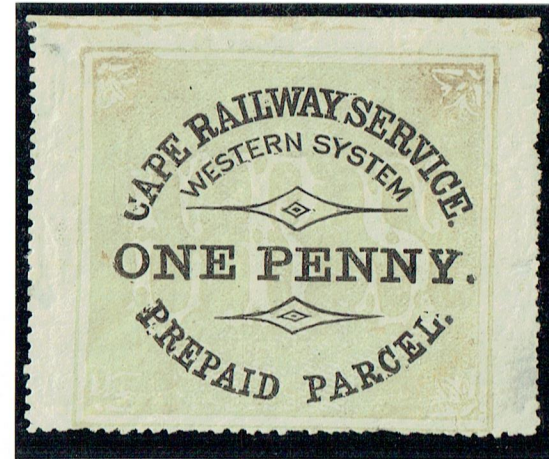
After its establishment in 1873 the CGR **took** over existing railways in the Cape altogether consisting of 63 route miles of track from Cape Town via Stellenbosch to Wellington and via Salt River to Wynberg

It was decided to extend the line from Wellington **westward** through the Hex River Valley and construction begun in 1873

In 1877 the Railway Engineer submitted a report that progress on the line was satisfactory and that some 90 km (56 miles) had been completed. Later that year the railhead reached Touws River and Beaufort West in 1878

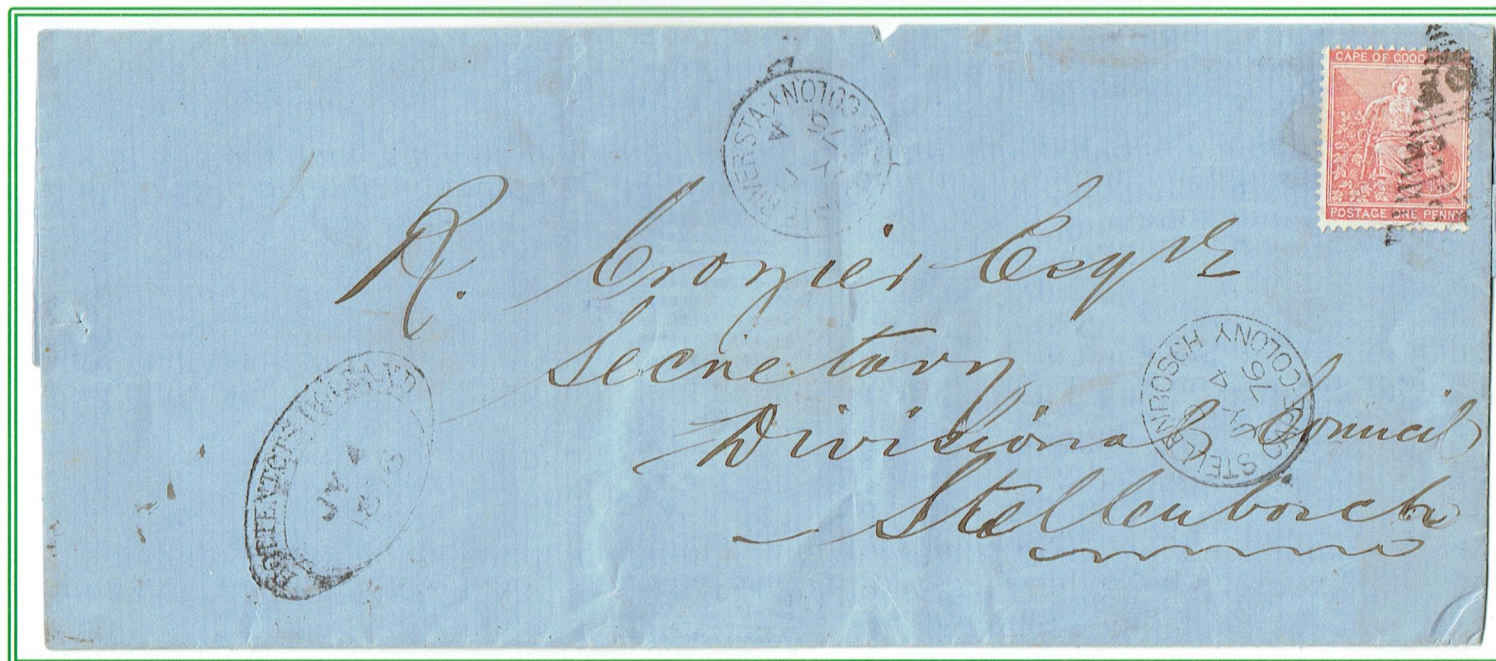
The Western System was the primary route from which the Cape Government **extended** its control over the Cape Colony and at a later stage, territories to the north

Parcel stamps and stationery for the exclusive use on this Western line was printed in 1877



Services again without a "S"

Large scroll letters "CRS" in the background with the figures of value in "normal" font
 Corner ornaments present as well as a "lozenge" type ornament printed above and below value figures
 Perimeter of sheets were not perforated
 Note the differences in the background color



Letter bearing an oval Hottentots Holland date stamp dated 4 July 1876 from where it was sent to Stellenbosch. It also carries a Eerste River Station Cape Colony transit cds with date 4 July 1876 and an arrival Stellenbosch Cape Colony cds dated 4 July 1876 – **rated rare**

WESTERN RAILWAYS.
 TRAFFIC DEPARTMENT.

Station. Baroo 29-11-1890

M. Facksett We have, this day, delivered in good condition, on your account, to Wagon Driver Inglbrecht the following Goods:

	Weight.	Rate.	Amount.
58 8 bags Sugar	4713		
✓ 1 Pine Board	1562		
✓ 1/2 Cost driver	34		
3 bp Coffee	18		
✓ 2 of Tea	398		8 Hrs short
✓ 1 of Medec	175		
✓ 2 of Soda	52		
✓ 1 of Syrup	112		
✓ 1 of Soda	150		
✓ 1 of Soda	187		
✓ 3 of Soda	300		
55 6 pkts Rice	7681		
	7510		
	8191		10

Received in good order the before named goods and I engage to deliver in like order to Messrs Facksett & Co. at the rate of one shilling per 100 lb payable on delivery
 Witness J. Steelling & J. Inglbrecht

CGR Western Railways Traffic Department – Delivery note issued at Baroo station on 29 November 1890

CAPE GOVERNMENT RAILWAY (CGR) – 1873 TO 1910

A new set of five parcel stamps were printed in **1882**

Before 1909 parcel stamps issued by the various administrations in South Africa was larger than these issued thereafter, and the stamps were **affixed** to the parcel itself. It was about this time that it was decided to rather affix stamps to the waybill

In this regard clause 293(a) of the 1896 CGR's regulations stipulate that stamps must be affix to the right-hand top corner of the parcel and effectively defaced.



C.G.R. (K.G.S.) GOODS CONSIGNMENT NOTE (Vrachtbrief). T 123.

The Cape Government Railway Department (Het Kaapsche Gouvernements Spoorweg Departement)

Station Port Elizabeth Time 2.7.1908
 Station Port Elizabeth Tijd 1908

Please receive the undermentioned from De Zender of Port Elizabeth and forward same to Port Elizabeth
 Weest zoó goed het ondergemelde te ontvangen van De Zender te Port Elizabeth en zendt zulks naar Port Elizabeth

for De Zender of Port Elizabeth and charge carriage to Port Elizabeth
 voor De Zender van Port Elizabeth en berekent vracht aan Port Elizabeth

I We hereby specially agree that this consignment is to be received and to be conveyed and dealt with in accordance with the terms, conditions, and regulations published in the Official Tariff
 Ik stem mits deze speciaal toe dat deze zending zal worden ontvangen en zal worden verzonden en behandeld overeenkomstig de termen, voorwaarden en regulaties gepubliceerd in het Officieele Tarief
 Wij Book in force at this date, with which I we acknowledge myself ourselves to be acquainted.
 Boek van kracht op dezen datum, waarmede ik wij verklaar bekend te zijn.

McCorquodale & Co. Limited, Printers, London.

Marks. Merken.	No. Nommers.	Description of Goods. Omschrijving der Goederen.	Weight, lbs. Gewicht.
<u>a</u>	<u>2</u>	<u>10/1. mthair</u>	<u>1113</u>
<u>z.p.</u>	<u>1</u>	<u>neg 10/1.</u>	<u>124</u>
	<u>2</u>	<u>10/1. Locks</u>	<u>2485</u>
	<u>3</u>	<u>1/3 Sand for digging</u>	<u>1113</u>
	<u>4</u>		

Signature of Sender or Person duly authorised to sign the Contract
 Handteekening van den Zender of Persoon behoorlijk gemachtigd het Kontrakt te onderteekenen.

NOTE.—The Cape Government Railway Department does not hold itself responsible for the weight or content of the consignment being correctly stated hereon.
 KENNISGEVING.—Het Kaapsche Gouvernements Spoorweg Departement stelt zich niet verantwoordelijk voor de juistheid of van den inhoud der zending, zooals die hierboven zijn aangegeven.

Remarks as to conditions, etc. 2.7.08

Lading Note No. Truck No. Invoice No. Date 2.7.08
 Ladings Brief No. Wagen No. Zendbrief No. Datum

For Rail Department.
 Voor Spoorweg Departement.

CGR form T 123 – Goods Consignment Note – for goods to be forwarded to Port Elizabeth with date 2 July 1908

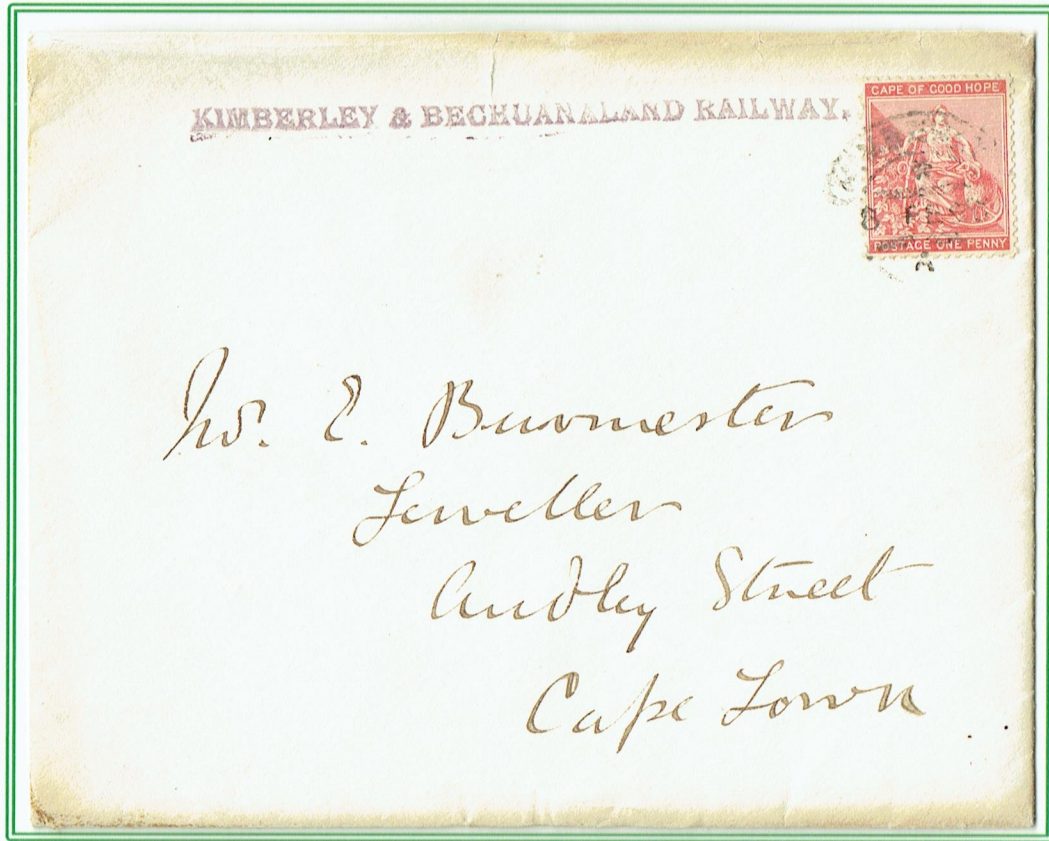
- Large scroll letters "CRS" in the background with the figures of value in "normal" font
- Corner ornaments present as well as a 'lozenge' type ornament printed above and below value figures
- Perimeter of sheets were not perforated

CAPE GOVERNMENT RAILWAY – 1873 TO 1910

Expansion

After 1876 the Western line was rapidly extended through the Karoo to reach **Kimberley** in 1885 via Beaufort West and De Aar

Cecil John Rhodes had the idea of a "Cape to Cairo" railway line and the CGR was instructed to extend the line to Vryburg, which was achieved by December 1880. The **Bechuanaland Railway Company Ltd** was formed in 1893 to **extend** the line from Vryburg to Mafeking and onwards



This letter posted in February 1890 from Kimberley to Cape Town with a cachet "KIMBERLEY & BECHUANALAND RAILWAY" must have been the much-favoured forerunner ideal of the line that was started in 1893



Block of six Bechuanaland Protectorate 2d stamps cancelled at Mahalapye Siding on 31 January 1902



Correctly franked registered letter from Bloemfontein to Bulawayo, Southern Rhodesia, on 24 July 1900 with Bulawayo back stamp dated 29 July 1900

The letter was sent after annexation of the OVS and franked with three non-overprinted "VRI" 3d OVS stamps

Travelled by train from Bloemfontein to Naauwpoort where it boarded the Midland TPO "Up" to its destination

For "Imperial Transport Service" see page _____



Travel permit issued by the Staff Officer & Provost Marshall at the Orange River Military Base to allow the bearer to travel to Bulawayo, Southern Rhodesia on 2 February 1907 and back

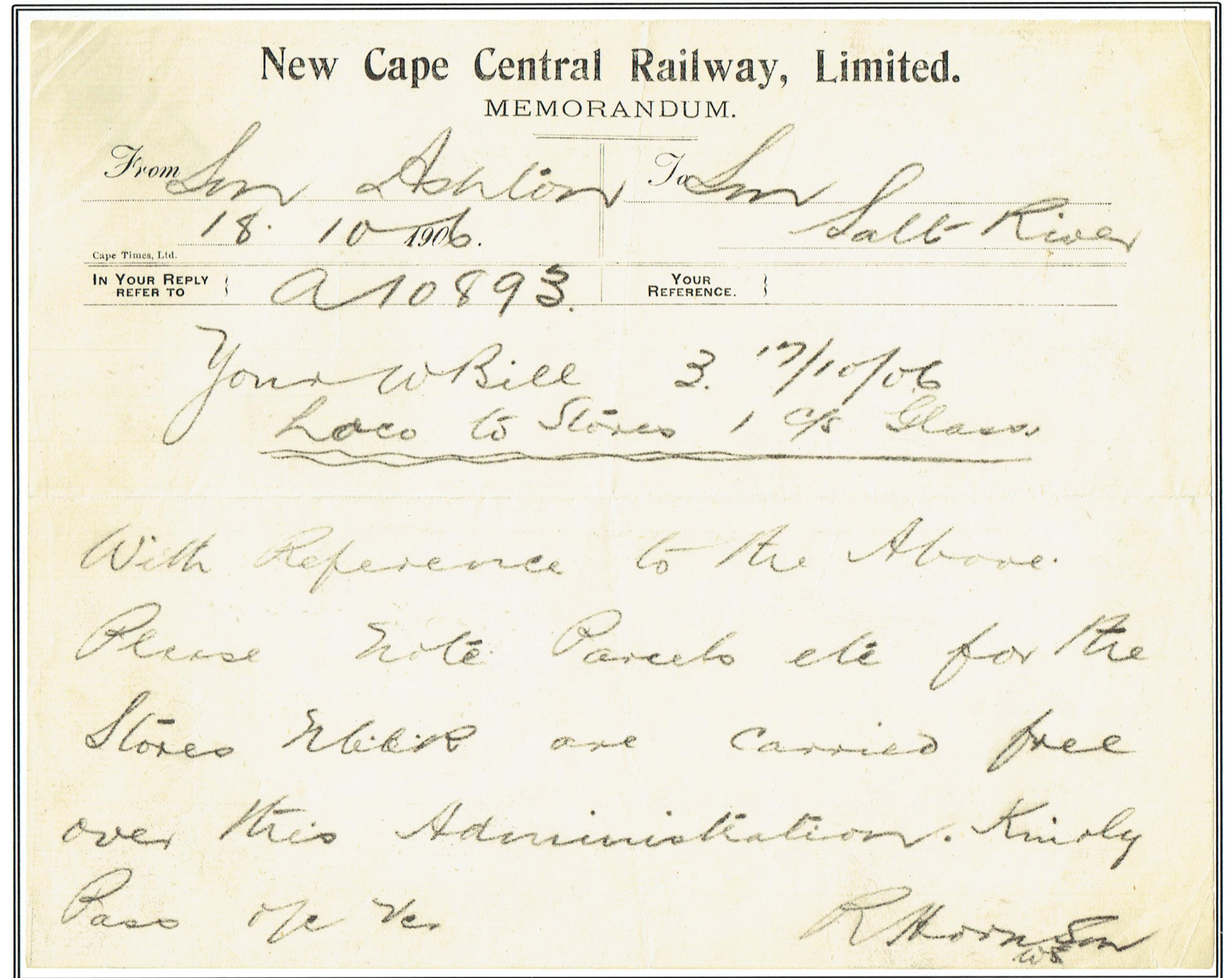
CAPE GOVERNMENT RAILWAY – 1873 TO 1910

Since the early 1900's the **tendency** started to attach the stamps to the waybill instead of the parcel

Towards **1909** a new set of parcel stamps were issued by the CGR. The New Central Cape Railway (NCCR) – see next page – that remain in service, used these stamps until 1925 when it was **absorbed** into the South African Railways, fifteen years after the formation of the SAR



Set of 10 specimens stamps that was issued before 1909



NCCR Memorandum dated 18 October 1906 from Stationmaster Ashton to the effect that parcels to stores are carried free of charge