

APRIL
2017

The South African Philatelist

All about stamps



THE JOURNAL OF THE PHILATELIC FEDERATION OF SOUTH AFRICA SINCE 1932

volume 93:2. 941

www.stamps.org.za



A NEW HECTORSPRUIT DISCOVERY.



DIE PROOF OF WATERLOW ISSUE



65TH ANNIVERSARY OF ACCESSION



NATAL - CETSHWAYO ERA



ISSN 0038-2566



DOUBLE PRINTS... Twice as Nice!

What have you been missing? www.filat.ch

Filat AG



Always Free Shipping... Also to South Africa!

Contents

The Journal of the Philatelic Federation of South Africa
www.stamps.org.za

Awards:

- o Large Silver Hafnia 1994,
- o Silver Bronze Pacific 1997,
- o Vermeil APS Stampshow 1999,
- o Large Silver Egoli 2001,
- o Federation Plaque 2004,
- o Silver España'06, Literature Award 2006,
- o Large Silver NZ Literature Exhib 2007,
- o Large Silver JAKARTA 2008,
- o Large Vermeil IPHLA 2012.



41

Ask an expert....



44

As one of the major art museums in South Africa, the Tatham Art Gallery, situated in Pietermaritzburg, was used by the MPS to show their Large Silver exhibit.



58

The key design element on these stamps - the Coat of Arms of the British South Africa Company.

REGULARS

- 40 Letters to the Editorial Board
- 40 Closing dates for future issues
- 43 Errors on stamps
- 47 Phun with Postmarks
- 66 A Closer Look at Modern Stamps
- 67 Guess the Stamp
- 67 South African New Issue
- 69 Society News
- 69 Classifieds

ADVERTISERS

- 38 Filat AG
- 40 David Morrison
- 41 Rand Stamps Paul van Zeyl
- 45 Stamp's Friend - P.E.
- 46 Sandafayre
- 53 Bill Barrell Ltd
- 57 Stanley Gibbons
- 61 John & Mark Taylor
- 63 Janssen Stamps
- 64 DAVO stamp albums
- 68 WBHO
- 71 Doreen Royan & Associates
- 72 Spink

FEATURES

- 42 *Obituary:* Ted Proud, RDP
- 42 *Philatelic Bulletin Board:* Book reviews and more
- 43 *New Hectorspruit Discovery!* Johan Bezuidenhout
- 44 *Maritzburg PS exhibits at Tatham Art Gallery* Aubrey Bowles
- 48 *Arrest of King Dinuzulu ka Cetshwayo, 1907* Roger Porter
- 49 *Postal Rates - valid from 1 April 2017* Robin Messenger
- 50 *The Union 1935 KG V Silver Jubilee Issue: Joined Paper stamps* André du Plessis and Neil Donen
- 54 *Decorated Post Offices: Burgersdorp (part 1 of 2)* Prof Garry Osthoff
- 56 *German Occupation of Austria - April 1938* Jan van Beukering
- 58 *British South Africa Company Rhodesia: The Large Arms Issues 1896-1897* J P D Flanagan
- 62 *Revisiting Union Roll Stamps in Sheet Form* Mike Tonking
- 65 *The Katschberghöhe Hotel Post* Chris Mobsby
- 68 *One of my Favourite Covers: 'Inside Out'* by Volker Janssen

THE EDITORIAL BOARD

Alan Rose: roses@vol.co.za
 Moira Bleazard: bleazard@telkomsa.net
 Robin Messenger: messenger.robin@gmail.com
 Janice Botes Production Editor: janice@gdb.co.za
 David Wigston: speedbird.imperial@gmail.com
 Peter van der Molen RDPSA, FRPSL: molens@pixie.co.za

EDITORIAL CONSULTANTS

Alex Visser : alex.visser@up.ac.za
 Chris Mobsby RDPSA, FRPSL: mobsbyc@mweb.co.za
 Michael Wigmore RDPSA: dcrocker@lando.co.za
 Gerhard Kamffer RDPSA: kamffer@netactive.co.za

FEDERATION SECRETARY

Jill Redmond RDPSA: pfsasec@mweb.co.za
 Tel: +27 (0) 11 917 5304

PRODUCTION & LAYOUT

Janice Botes. fax to email: 086 697 4806



Correspondence to THE SA PHILATELIST should be addressed to the Editorial Board. Material received is most welcome and will be reviewed. Articles, letters and items of interest may be published and stand the chance of being rewarded with a PILOT writing gift.

Sponsored by

 More than a Pen!

CINDERELLA PHILATELY

A response from Peter Rogers, President of the Cinderella Stamp Club, on the subject of the status of Revenue stamps as part of the broader field of Cinderella Philately.

In the August 2016 edition of *The SA Philatelist* Peter McCann chastised Chris Mobsby for having the temerity to argue that revenue stamps are Cinderellas.

"Bottom line", Dr McCann wrote, "Revenues are definitely not Cinderellas". Dr McCann was once the Chairman of the FIP Revenue Commission and I can quite see why, from that elevated position, matters must be viewed in black or white and there is no room for compromise.

However, I agree with Chris Mobsby and a great many more collectors—Revenues (in the guise of 'Fiscals') were on the list of Cinderellas drawn up in 1959 by the founding fathers of Cinderella philately and remain there. The late Francis Kiddle, a former Secretary to the FIP Revenue Commission implicitly agreed; he wrote (in the British Philatelic Federation Congress 1992 Handbook "Progressively, specific categories of Cinderellas have become more accepted by the Establishment.

For example, a 'Revenue' class was introduced into our national competition about 10 years ago".

The not insignificant number of Revenue collectors who are members of the Cinderella Stamp Club (of which I am one) would also agree. The throng of Revenue collectors who attended the Revenue Day of the World's First Congress of Cinderella Philately on 17 September 2016, and who gave us some splendid displays, would agree. Such Revenue collecting luminaries as Gary Ryan, Martin Erler and the immediate past and present Secretaries of the FIP Revenue Commission, all of whom accepted the invitation to sign the Maurice Williams Roll of Notable Cinderella Philatelists, evidently agreed. Bottom line - at the grass roots below the ivory tower Revenues are still Cinderellas.

Peter Rogers FRPSL, RNCP, President of the Cinderella Stamp Club.

DISCLAIMER:

The views expressed in this publication do not necessarily represent those of the Philatelic Federation of South Africa.

While every effort is made to ensure accuracy and honesty in the editorial columns of this magazine, the publisher and editor cannot be held responsible for inaccurate information supplied and consequently published.

Publication of articles is subject to availability of space and cannot be guaranteed in each edition. Copyright for material published in this magazine is strictly reserved

EDITORIAL POLICY:

The Editorial Board reserves the right to accept or decline any articles, letters or any other material submitted for publication, and reserves the right to effect minor changes of spelling, punctuation, grammar and word choice without requesting prior permission from the author(s). For more substantial revisions, such as shortening or restructuring, either the Board will request the author(s) to effect such changes or will propose amendments to the author prior to publication - if no agreement can be reached then publication will be declined.

The SA Philatelist

Publication closing dates for final submission of advertising material to avoid late delivery. Articles should be submitted in the month prior:

- **June** 2017
Vol. 93: 3. 942 : 08/05/2017
- **August** 2017
Vol. 93: 4. 943 : 06/07/2017
- **October** 2017
Vol. 93: 5. 944 : 06/09/2017
- **December** 2017
Vol. 93: 6. 945 : 08/11/2017
- **February** 2018
Vol. 94: 1. 946 : 08/01/2018



Closing of Eppingdust Post Office

The South Africa Post Office would like to inform customers that the Eppingdust Post Office in the Viking Park Centre Cape Town closed its doors on 24 January 2017 due to renovations at the centre. A new branch will become operational in a few months.

Editorial Board's choice Winning Contributor

This issue's award of PILOT pen goes to Pat Flanagan for his article on BSAC - Rhodesia, The Large Arms Issues: 1896-1897.

PLEASE NOTE:

Enquiries regarding subscriptions and membership can be referred to Jill Redmond RDPSA at pfsasec@mweb.co.za Tel: +27 (0)11 917 5304

Contributions and letters for the publication must be forwarded to the Editorial Board of *The SA Philatelist*, PO Box 131600, Benoryn, 1504. South Africa or email: saphilatelist@iafrica.com

Advertising: Rates available from the Advertising Manager, Box 131600, Benoryn, 1504. email: saphilatelist@iafrica.com

Subscription and circulation: The annual subscription rate for 2017 in South Africa is R300.00. SADC countries, the subscription is R545.00 per year. International overseas, the subscription is R740.00. These prices all include postage via airmail. Should you have enquiries or wish to subscribe, please communicate with the Membership Secretary/Subscriptions Manager: P O Box 9248, Cinda Park 1463. email: pfsasec@mweb.co.za

Publication: This journal is published by *The Philatelic Federation of South Africa*. Jill Redmond RDPSA, is the Secretary. P O Box 9248, Cinda Park 1463. email: pfsasec@mweb.co.za Tel: +27 (0) 11 917 5304

Production & layout: Janice Botes janice@gdb.co.za

DAVID MORRISON

SPECIALIST DEALER IN BRITISH COMMONWEALTH POSTAL HISTORY, SHIPWRECK MAIL AND WORLDWIDE UNUSUAL POSTAL INCIDENTS

View all items at:

www.forpostalhistory.com

D. Morrison Ltd.

9 Crab Tree Close, Malmesbury Wiltshire SN16 0AF, United Kingdom

Tel: (+44) 1666 822055

Email: africonect@aol.com

ASK AN EXPERT...

DO YOU HAVE A QUESTION FOR AN EXPERT, REGARDING SOUTHERN AFRICAN PHILATELY?

Asking for Help

An interesting letter, sent on 3 January 2017, from Guojian Huang, and forwarded to the Editorial Board via Ken Joseph (info@philatelicfriends.com) then answered by Hugh Amooore.

As a 75 year old, retired Chinese university professor, I have been collecting stamps since 1955. I collect mainly the thematic of ships, particularly sailing ships. My exhibit 'A Story about Sailing Vessels' won Gold in the All-China, Asian and World Exhibitions. I have two postal history covers from South Africa that I need help with:

The first is an airmail cover posted from Durban to Usti nad Labem, Czech on Jan. 13, 1938. I want to know if the franked 24 x 1d stamps were the correct postage rate. How much was for regular mail, how much was for airmail and in which period were these rates active?

The second is a registered cover posted from Pretoria to Sussex, England May 2, 1949. The same question: if the franked stamps were at the correct rate?

Can you also find the lists about postage rates of South Africa since 19th Century? If so, could you send a copy to me so that I could solve these questions by myself.

Huang, Guojian

Dear Professor Guojian Huang,
Your inquiry has been passed on to me. First, the airmail rate from South Africa to Western Europe (including Czechoslovakia) was 1 shilling (12d)

per ½ ounce from 1 January 1932 until the outbreak of war in September 1939. The 24d franking is thus correct for a double rate 1 ounce airmail letter at the time. The surface mail letter rate at the time was 3d for the first ounce and 1½d for each additional ounce; this rate was set on 1 Jan 1922 and lasted until 31 March 1950. The registration rate was 4d per registered item, set in 1910 and remained 4d until the mid 1950s.

Secondly, the rates to England in 1949 were as follows:

Registration fee: 4d (set in 1910 and remained 4d until the mid 1950s).

Letter rate: 1½d for the first ounce and ½d for each additional ounce from 1 May 1947 to 31 March 1950.



Airmail letter rate: 9d per 1/2 ounce from 10 March 1947 to 30 June 1953.

There is a reasonably complete listing of rates on the PFSA website: www.stamps.org.za

Hugh Amooore

This is a glimpse of our BEAUTIFUL WORLD...



... let's share in the totality of its
PHILATELY*

For buying, selling and bi-monthly AUCTIONS, just contact
PAUL VAN ZEYL t/a RAND STAMPS
email: paulvz@mweb.co.za
telephone: 012 329 2464



*** stamps, postal history and stationery, postmarks, postcards, documents and literature**

For the whole collecting continuum, from beginner-collectors to well-seasoned philatelists!

OBITUARY



R.I.P.

Edward W.B. 'Ted' Proud, RDP

The name Ted Proud is so well known in the stamp world and it cannot help but conjure immediate thoughts of the recognisable 'brand dust jackets' adorning so many of his philatelic publications. As compiler or co-author, his handbooks provide an invaluable framework to understanding and advancing own research into the postal history and postmarks of, particularly, the British Empire; plus more specific subjects - notably military, airmail and maritime topics. His works (most with the historic overview necessary to help understand the philately) are not limited to but include some eighty different British colonies, illustrating 50,000 + postal markings. A few titles of particular relevance to our collecting community would be his volumes on the British, East African or South African Army Postal Services; Basutoland and Bechuanaland; Swaziland and Zululand; Northern and Southern Rhodesia; Nyasaland; and German East Africa. A lifetime's passion and studies shared - his is a broad legacy for our hobby.

As a professional philatelist he was a major postal history dealer, as well as publisher. In addition to all his handbooks, he founded *Postal History International* magazine in 1972. He served on the council of the Philatelic Traders Society (UK) and was past-President of the International Federation of Stamp Dealers Associations.

In 2008 he was invited to sign the UK's Roll of Distinguished Philatelists.

Edward Wilfrid Baxby Proud, aged 86, passed away peacefully on 6 February 2017.

Michael Wigmore RDP SA

BOOK RELEASES

'Entertainment Tax in South Africa' FOUR PAPERS

by Dr Ian A. Matheson and Andrew McClellan

Very little has been written to date about the Entertainments Duty Stamps of the Union of South Africa. The most authoritative source, not unexpectedly, over the years has been *British Commonwealth Revenues* by Barefoot and Hall. It is interesting to record that the total numbers of different Entertainments Duty Stamps from all four Provinces recorded in past editions of the book were 11 (1980), 16 (1986), 62 (2008) and 110 (2012). The number of recorded stamps has increased significantly since 2012. These numbers demonstrate the exponential rate of growth in the interest and discovery of these elusive stamps. This publication describes all the recent discoveries and provides a rational estimate of dates of issue, print details, tax rates and modes of usage. Provincial Ordinances of Cape, Natal, Orange Free State and Transvaal have been examined from Government archives to understand the policies of each of the Provinces. Each managed tax rates and stamp-issuing policy differently. Archives of the South African Post Office and Messrs De La Rue have been consulted to gain additional details of the printing of these scarce revenue stamps. Details are also provided of Government tickets and stamp booklets, which have never been published elsewhere.



The transition from use of stamps to preprinted admission tickets (including entertainments tax) is demonstrated. The exemption from tax or the exemption from the use of stamps are discussed and illustrated. The 80 page publication is printed in full colour and Perfect bound. Copies will be available from Ian Matheson at ian@cdi.biz, price R225 each exc. postage. The Revenue Society in UK will also be permitted to print and distribute copies, but details are not yet available.



Updating the UNION - getting a project off the ground. What's your opinion?

As a member of the Pretoria Philatelic Society and one who collects Union of South Africa stamps, André du Plessis has made contact with other collectors - he has learned that Moody Tidwell also collects 'Union' (they had bid against each other a couple of times) and shares his thoughts here.

"Over the past couple of months the idea of updating the varieties of the Union stamps as described by Hagger in *The SA Philatelist* has come to mind. I have discussed this with members of the Editorial Board and they seem to be positive.

I propose that this includes newly identified varieties, previous articles and so on. On page 191 of the December 2016 *SAP* you will see comments relating to this.

My idea is to make contact with Union collectors to get their idea/suggestions as well as varieties that I do not have. The necessary acknowledgement will be given to each. The idea is **not** to rewrite the *Union Handbook* but rather to make a visual list of the varieties. All responses would be most helpful to the project."

Andre du Plessis.

In support of this idea, Moody Tidwell added this comment: "I think your idea has merit and is long overdue. Over the years a number of people have scanned varieties and published the results in various philatelic magazines but those articles have always been devoted to a specific issue or issues. I would be pleased to contribute to the effort and have quite a few varieties, many already scanned, but my list is far from complete. I will help in any way I can. In a closely related way you should be

aware that Jan van Beukering is well on the way to completing scans of all the Union positional arrows.

As to the process, I suggest approaching it as the Handbook does; King's Heads then London but combined with Pretoria printings, followed by Roto, then Hyphenated series. If there is an interest, commemoratives could be added later. The King's Head issues could easily be done one after another but as for Roto and Hyphenated I suggest value after value i.e., all the Roto 1/2d issues, then the 1d issues.

If you get enough interest you could farm out issues and values to different people with you serving as manager as to form and quality. Just some of my own thoughts.

Moody Tidwell.

And Mike Tonking adds his thoughts; "I should congratulate you on the series you have been writing on the Silver Jubilees. Some years ago I did a lot of work on them with the late Tim Hall. It would be a monumental job to publish the hundreds of varieties listed in the *Handbook* let alone the multitude of smaller varieties as, for example, listed by you in your articles. Where would one stop? The other thing is to consider the amount of interest there would be in such a publication. To me there seems to be a major drop in interest as evidenced by the poor support for the last exhibition.

I am not trying to throw cold water on the idea but feel there would be limited interest for such a project. In any event I would be able to assist you if it goes ahead as I have a number of extensive Union collections.

Mike Tonking.



Philatelic Federation of South Africa - Books Available

Order from PhilFed Books, PO Box 4007, George East 6539 or johgroen@mwenbco.za Prices are for South African destinations; for overseas postage enquire at email as above; for more detail please refer to PFSA website at www.stamps.org.za

- *The Postmarks of Rhodesia 1888-1980* by Jon & Jennifer Barry, 1998. A4. 447pp - R270
- *Railway Postal History of South Africa* by H S Hagen & S P Naylor, 1998. 279pp - R380
- *World War II: Prisoner of War and Internment Camps in South Africa and their Mail* by J B R Findlay & Rory Ryan, 2003. A4. 40pp - R130
- *The Wherewithal of Wolmeransstad* by Birkhead & Groenewald, 2009. A4. 78pp - R295
- *The Pseudo-Siege of Schweizer-Renecke* by Birkhead & Groenewald, 2005. A4. 63pp - R280
- *Die Machadodorp - briefkaarte van die Anglo-Boereoorlog* by Gerrit H Jonkers & Joh Groenewald, 2006. A4. 56pp - R215
- *The Riddle of Rustenburg* by Birkhead & Groenewald, 2007. A4. 79pp - R280
- *Die Pietersburg-seëls van die Anglo-Boereoorlog* by Carel Breedt & Joh Groenewald, 2007. A4. 109pp - R280
- *The Legacy of Lydenburg* by Birkhead & Groenewald, 2009. A4. 78pp - R295
- *Die Vrijburg-seëls van die Anglo-Boereoorlog* by Groenewald, 2010. A4. 90pp - R315
- *Anglo Boer War Stamp Souvenirs* by Birkhead & Groenewald, 2014. A4. 56pp - R235

'THE STORY OF THE MAURITIUS POST OFFICE'



A well-documented book highlighting the untold part of the history of the Post Office in Mauritius over the last 240 years. Book on sale at R750 now on the <http://www.mauritiuspost.biz/onlineshop/product/241/the-story-of-the-mauritius-post-office>. www.mauritiuspost.biz

Pritish Ghirish Bissoon has 35 copies for sale at R600 per copy. Well known to stamp collectors, Mauritius' philatelic reputation emanates from the extraordinary romance associated with its first two stamps namely the Penny Blue and the Penny Red, issued in 1847... if interested, do contact him on pritishghirish@hotmail.com

What the Heck a new Hectorspruit Discovery!

by Johan Bezuidenhout, Transvaal Study Circle and Bellville P S

Hectorspruit is a small hamlet on the Pretoria to Lourenço Marques railway line. It is 29km west of Komatipoort, and the second last railway station before the Transvaal/Mozambique border. Sugar cane, fruit and vegetables are cultivated at Hectorspruit. Spruit is the Afrikaans term for river, and rightly so, since the Hectorspruit is a southern tributary of the Crocodile River.

This town also played its part in the great Boer War, and it is well documented in several books on the Boer War. Dr. Conan Doyle says about this stage of the war: "The most incredulous must have recognised as he looked at the heap of splintered and shattered gunmetal (at Hectorspruit) that the long War was at last drawing to a close."

Against the backdrop of this war ravaged town, the postal system continued to function, apparently quite well. The following had been noted relating to Hectorspruit:

"It is hereby notified for general information that the establishment of the following Post Agencies have been approved, to have effect from 1 April. Includes Hectorspruit in the District of Lydenburg."

• *Transvaal Government Gazette* 54 of 27 March 1901 (Tvl GG), Postal Notice 29 - 25 March 1901.

• POC = ORC Post Office Circular of 15 April 1901 - Article 16: The Transvaal Postal department notifies that the undermentioned Post Office and Postal Agencies have been re-opened. 11 listed, one of which was Hectorspruit as a POA.

• APOC = Army Post Office Corps - Offices in the Transvaal open on 24 July 1901.

The earliest recorded postmark for Hectorspruit, according to the late Ralph Putzel's book *'The Postmarks of South Africa and former States and Colonies'* Volume 4, was one used in 1899.

The R.O. canceller on the cover in this article has been recorded by the late Major Ian Matthews as Matthews Type 1h. Very few of these cancellations recorded on cover seem to have survived. According to both Prof Alex Visser, who I acknowledge with appreciation for his continuous support for my study of Transvaal postmarks and Richard Stroud, who I acknowledge for assisting me with the information on the Tvl GG, this is also the earliest recorded cover for this postal agency.

So here is to many more new Transvaal discoveries!



Fig. 1. Cover with earliest recorded date for Hectorspruit R.O.

Comic Corner

Stamps that make us SMILE Episode 40 of: Errors on Stamps...

by Volker Janssen, Fish Hoek Philatelic Society & Royal Philatelic Society of Cape Town



BROTHER WITH THE WRONG NAME

This miniature sheet was issued by the Republic of Panama on 18 December 1968 in commemoration of three fighters for Human Rights, who have all been assassinated:

1. Rev. Martin Luther King,
2. US-President John Fitzgerald Kennedy and his brother, Attorney General Robert Francis Kennedy.

The error is in the name of Robert Kennedy whose middle name also shows 'Fitzgerald' on the stamp the same as his brother - instead of his correct second name 'Francis'.



TATHAM ART GALLERY
Serving Msunduzi through the Visual Arts



Fig.1: Swimmers from Californian Colleges in the, USA.



Fig.2: Gordon Bennett telling keen students from Kingsway School, Amanzimtoti, all about our exhibit.



Fig.3: Chloe Paine with Dr Mark Coghlan, Chief Museum Scientist at Museum Service, together with their children Jonty Paine and Hannah Coghlan and Jody Soares.



Fig.4: Glenn Flanagan, MA, Director of the French Presence in KZN with dancers from the Impisi Emnayame dance group and an Educational officer, of the Gallery.

MARITZBURG PHILATELIC SOCIETY EXHIBITS AT THE TATHAM ART GALLERY

by Aubrey Bowles, Secretary, Maritzburg Philatelic Society

The award-winning exhibit, covering the history of Pietermaritzburg, was on display at The Tatham Art Gallery in Pietermaritzburg from 11 to 25 February 2017.

The exhibit was well publicised in most of the PMB and Durban newspapers with additional features published weekly. This excellent publicity attracted many visitors to the show including swimmers from California, USA, who had travelled to Pietermaritzburg to compete in the Midmar Mile (fig.1).

During 2015, we had approached the Assistant Director of the Tatham Art Gallery, Ms Bryony Clark, about the possibility of staging a 'stamp exhibit' at the gallery providing it won an award at SAPDAPEX 2016 in Edenvale. Having achieved a Large Silver award for our efforts, the Art Gallery was pleased to display our exhibit in the large Ferguson Room and the show was on!

We wrote to 27 local high schools inviting them to come and view the exhibit as 'the history of Pietermaritzburg' fitted into the school syllabus. We enjoyed massive media coverage and details of the exhibit as well as two talks by one of our members, Dr Mike O'Connor, was included in the Tatham Art Gallery 'Outline' brochure which advertises forthcoming events. Sadly only a few schools visited the exhibit, one of which was Kingsway High School all the way from Amanzimtoti (fig.2).

Fortunately, we were able to attract a few mature students and visitors including the Impisi Emnayame dance group and about twenty art students who were enthralled by our exhibit and used it as an 'active workshop' drawing inspiration from the stamps to design a few of their own. The Impisi Emnayame dance group were going to entertain the French Ambassador during his visit to Pietermaritzburg (fig. 4).

We had some very young visitors, including Jonty Paine (age 7), who also attended the Saturday Lecture and made careful notes by drawing a picture of the first two-storey City Hall and writing down some important dates; indicative that Dr Mike O'Connor, an authority on the buildings of Pietermaritzburg,

was able to keep both young and old attentive during his lecture. We were pleased to meet Glen Flanagan, a French Legionnaire, who came to see the exhibit (fig.4) as well as Dr Mark Coghlan, Chief Museum Scientist who was impressed by what he saw (fig.3).

We were fortunate enough to be entertained by a group of 20 aspiring artists who attend Art Classes at the Gallery twice per week. Some are quite young whereas others are university students or past-students. Inspired by our exhibit, the artists were challenged to design and draw a postage stamp and some of the results were rather good. More important was the fact that they must have studied our exhibit umpteen times and we hope that they will be inspired to collect stamps one day. A brochure, kindly supplied by Joh Groenewald, was handed out to these students as well as visitors to the exhibit. Three of the best works were chosen and the artists were well-pleased with the decision (fig.5).

We even held a small competition and offered a prize of R10-00 to the first person who could identify the flaw on the Roosevelt stamp shown in the PFSA hand-out. Thuli Ngcobo was thrilled to receive the prize for correctly stating that there were six fingers on Roosevelt's left hand (fig.6).

Ruth Sykes kindly sponsored the posters used to advertise the event which were mounted both outside and inside the museum. We appreciate the donation.

Two lectures given by Dr Mike O'Connor on both Saturdays (11 Feb and 25 Feb) were well attended and very popular. Anne Southwood offered a vote of thanks at the first lecture and invited guests to visit the Maritzburg Philatelic Society at one of our monthly meetings. This was repeated by Aubrey Bowles after the second lecture.

The interesting lectures on the history of Pietermaritzburg in the Lecture Room, were followed by visits to the Ferguson Room with the majority of attendees quite happy to enjoy a tour of the exhibit which generated a hectic debate between Mike Rivers-Moore, a retired Civil Engineer and Dr Mike O'Connor (fig.7).

All the Art Gallery staff were extremely helpful and obliging and we owe a huge debt of gratitude to Bryony Clark for helping to stir a positive interest in philately in Pietermaritzburg.

We must also thank her Educational Officers, including Pinky Madlabane-Nkabinde; Reena Bhoodram and Kobie Venter for their interest and support.

We are thrilled to record that the Tatham Art Gallery have kindly offered to display our future eight-frame exhibit in February 2018 and have volunteered to help us with the necessary publicity and notices to schools via the Department of Education because they are firmly of the opinion that students / learners will derive benefit from our exhibit which tells a positive story.

Special mention must be made of all the Maritzburg Philatelic Society members who gave up a complete morning or afternoon to staff the exhibit. Special thanks to Dave and Heather Wyllie for putting up and taking down the exhibit.

Obviously the press played a vital and important role and the generous support and publicity received went a long way towards putting our exhibit firmly on the map.

The MPS have thoroughly enjoyed the fruits of our labour and would, once again, encourage other societies to work on an exhibit as a joint-effort by all members. It builds invaluable camaraderie and the amount of research done is terrific.

We would like to extend a challenge to all Societies throughout the RSA to put-up an exhibit about their town or city and compete against us at the 2018 National Exhibition. By participating, members and societies will certainly help to promote our hobby across a wide spectrum of the public.



Fig.5: A group of aspiring artists with the stamps they drew during their visit to our exhibition.



Fig.6: A prize won by Thuli Ngcobo for correctly identifying the flaw on the Roosevelt stamp shown in one of the philatelic leaflet hand-outs.



Fig.7: Following an interesting lecture by Dr Michael O'Connor one of the items displayed in the exhibit was hotly debated by Mike Rivers-Moore, a retired civil engineer who had designed and built most of the bridges in Pietermaritzburg.



stamps and
other collectables

still looking for *that* item?

ifstda

Stamp's Friend

Port Elizabeth/Eastern Cape

buying • selling • want lists

082 554 8900

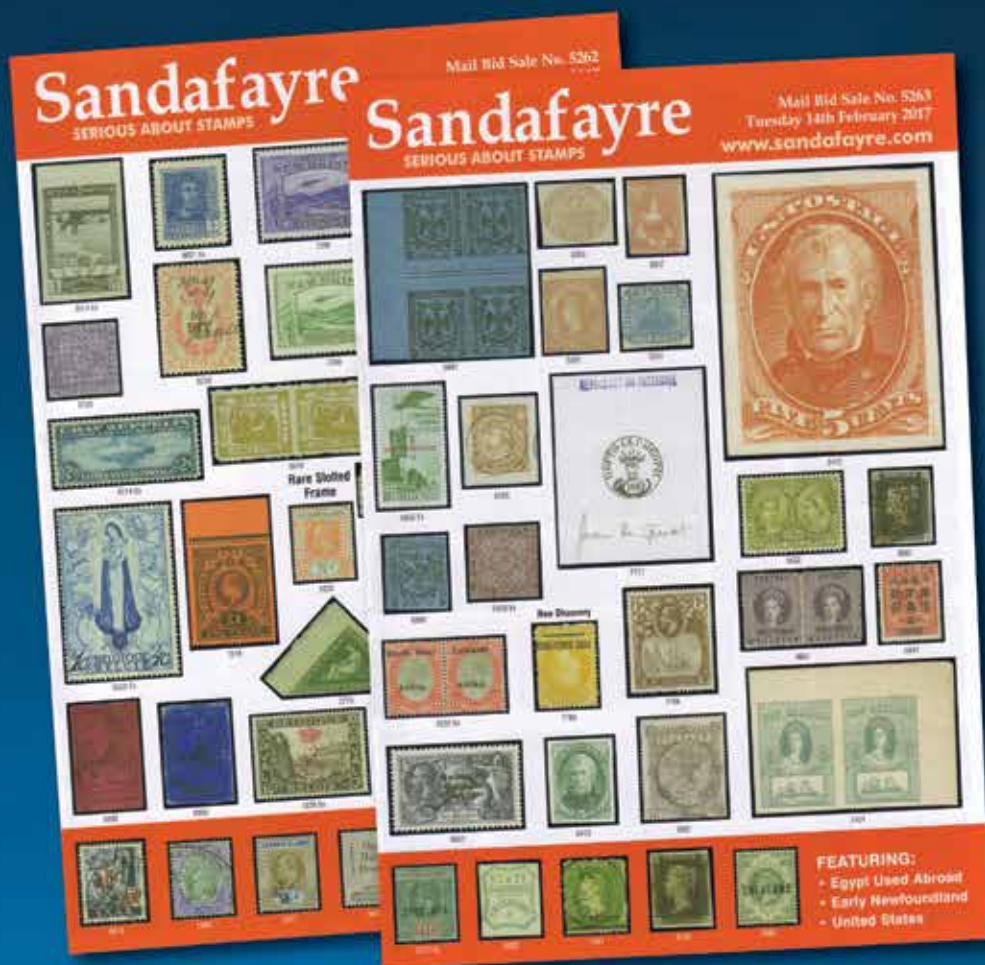
info@stampsfriend.co.za

British Commonwealth • Hong Kong • St Helena

Sandafayre Auctions

SOMETHING DIFFERENT EVERY WEEK

From fine and rare to exciting new discoveries.
Exhibition quality collections to estate cartons.



Whatever you collect you'll always find
something in our weekly auctions.

Sandafayre
SERIOUS ABOUT STAMPS

Visit: www.sandafayre.com call: +44 (0)1565 653214
email: stamp@sandafayre.com to request a catalogue.

SANDAFAYRE, PARKGATE, KNUTSFORD, WA16 8DX, UK.

Phun with postmarks

by Alex Visser RDPSA, Pretoria Philatelic Society

Email: alex.visser@up.ac.za



The tale of two towns

Most philatelists know that there were towns in the Cape and in Natal named after Lady Juana Smith, the Spanish wife of Governor Sir Harry Smith. She evidently made quite an impact on society, in that two towns were named after her! Or was it due to her husband, Sir Harry's ability to name towns! The following information was extracted from the *Putzel Encyclopaedia* volume 2.

The parish of Lady Smith was established on 10 February 1851 by the Swellendam presbytery a century after the first colonists settled in the district. The name was soon written as Ladysmith, but the name was changed to Ladismith in 1879 to avoid confusion with the namesake in Natal. Note that names and name changes are inconsistent and sources do not necessarily agree. In an attempt to eliminate confusion once and for all it was suggested in 1966 to change the name to Juanasmith, but this did not meet with approval.

Ladysmith is the third largest town in Natal, and is situated on the Klip River. The town was established in December 1847 and proclaimed on 20 June 1850, at about the same time as the Cape counterpart.

From a postal perspective, the Cape office was opened on 17.2.1852 when the first Postmaster was appointed. Initially the name was spelt with 'Y' or 'I', but from 1861 it was spelt with an 'L' in post office documents. The Natal office was opened in 1850. Both offices are still operational.

The initial postal history is the focus of this column. The Dated Town Oval of the Cape office is shown in Figure 1 with the name as two hyphenated words with 'Y'. This date stamp has been recorded seen from 3 FE 1854 to 13 DE 1883. A recent discovery was the single circle date stamp with name as 'Y' shown on cover in Figure 2, courtesy of Steve Hannath. Note that the date stamp is 11 JA 1882, although from the Cape Town backstamp the letter went through the mail in 1883, and it appears as if the post office clerk in Ladismith did not change the year for the new year (the date is debatable but it is more likely that the small office forgot to update the year than a large office - this happens quite regularly). This cover also shows a triangular canceller with CGH in the corners, which is nice as

normally one cannot date these without being on cover. One can speculate regarding the reason for the issuing of the new discovery. The subsequently issued date stamp is one with CAPE COLONY at the base (Figure 3a), and name with 'L', as all further issued date stamps. This date stamp was recorded seen from 4 OC 1883 to 1 DE 1911. The telegraph office opened in 1883, and Figure 3b shows a new TO discovery dated 1890 (Fritz Aab). I am indebted to Prof Franco Frescura for the debate about these early cancellers.

There can be no confusion about the Natal date stamps, as the Oval canceller, shown in Figure 4a, is a style only used in Natal, and is similar to a Pietermaritzburg one. All the circular date stamps have NATAL at the base, as shown in Figure 4b.



Fig.1. Dated Town Oval of Ladysmith, Cape.



Fig.2. Recent discovery of single circle date stamp of Ladysmith, Cape.



Fig.3. Earliest Ladismith, Cape and telegraph office date stamp with new spelling.



Fig.4. Early date stamps of Ladysmith, Natal.

Feedback

I am always thrilled to receive feedback on this column. John Carter sent me new dates on the Uniondale column in the February 2017 *SAP*. In one case the gap between date stamps was closed by 7 years. This helps to gain a fuller understanding of what happens in the postal system. I also discovered that the last item in the table should be 2c, not 1c, but this would be fairly obvious to any casual observer.

Die geskiedenis rondom plekname word nogal interessant, veral wanneer daar spelling veranderinge plaasvind soos in die geval van Ladismith in die Kaap, wat aanvanklik Ladysmith was. Die poswese kan nie bybly met hierdie verandering nie, en stempels is duur om te verander. Ons vind dit selfs met die huidige vlag van dorpsnaam veranderinge waar die oorspronklike naam na 'n paar jaar weer sy verskyning maak. Maar dit is 'n onderwerp vir 'n toekomstige rubriek. Laat gerus die terugvoer vloei, want sodoende dokumenteer ons wat tans algemene kennis is, maar in die toekoms vrae mag laat ontstaan, soos wat ons in hierdie rubriek gesien het.



Arrest of King Dinuzulu ka Cetshwayo, December 1907

by Roger Porter, Cape and Natal Study Circle

A sequel to the Bambatha Rebellion of 1906 (Porter) occurred after evidence given at various courts martial implicated King Dinuzulu ka Cetshwayo's (Fig.1) involvement and support for the 1906 rebellion. His loyalty was brought into question and the Natal Government decided to arrest the King on charges of high treason and possession of unregistered firearms. Martial Law was proclaimed in Zululand on 30 November 1907, the active militia mobilized, and Dinuzulu ordered to surrender to the magistrate at Nongoma. 'On Active Service' mail is known from this short lived event of three months; it is rare with about 15 items having been recorded (Porter 2008).

Colonel Duncan McKenzie was put in command of troops that included the Natal Carbineers, Border Mounted Rifles, Umvoti Mounted Rifles and Natal Field Artillery. This force left on 3 December by rail to Ginginhlovu. McKenzie and his staff went via Eshowe and Melmoth and arrived at Nongoma on the 6th. The rest of the force under Colonel Arnott went by rail to Somkele and then marched by way of a very bad road to Nongoma arriving there on 10/11 December 1907 (Fig.2). Dinuzulu surrendered on 9 December at Nongoma. Reports were received that rifles held at Usutu, the King's kraal (Fig.3) had been distributed to chiefs in the Northern District of the colony. Martial Law was thus extended to this area and a column was formed at Vryheid. There were now some 2,978 men in the field and 711 reserves (Porter 2006). The troops moved out on the night of 12-13



Fig.1: Picture postcard of King Dinuzulu ka Cetshwayo taken a few weeks after his capture and imprisonment. Cancelled Pietermaritzburg FE 4 / 08.

December making their way to Usutu kraal, but no rebels or firearms were found.

King Dinuzulu was taken to Pietermaritzburg to await trial. With the king out of the way, McKenzie decided that the 'crisis' was over, and the infantry and artillery were ordered to demobilise on 18th. But to deal with

several 'disloyal' chiefs he sent out the Natal Carbineers. They completed their duties in the northern area, arriving at Vryheid on the 22nd and were demobilized in time for Christmas.

A 200 strong Militia Composite Regiment (Fig.4) was then formed at Vryheid that continued to operate in the Northern District, taking in firearms until the end of February 1908. All military units were then disbanded and the men returned home. King Dinuzulu faced 23 charges and after some delay the controversial trial commenced in Greytown in November and was concluded by 23 February 1909. He was found guilty of harbouring Bambatha's wife and children, assisting Bambatha during the rebellion, and harbouring other rebels at various times. He was sentenced to four years imprisonment, which was cut short by the advent of the Union of South Africa when he was released by Prime Minister General Louis Botha. He lived out his remaining years at Uitkyk farm near Witbank until his death in October 1913.

References.

- Porter, R.N. 2006. Postal History of the Operations to Arrest King Dinuzulu, December 1907-February 1908. *Natal & Zululand Post*, 10 (2): 66-70.
- Porter, R.N. 2008. More on the Zulu Rebellion of 1906 and the Arrest of King Dinuzulu. *Cape & Natal Philatelic Journal*, 12 (2): 78-83.



Fig.2: 'On Active Service' cover from a member of the Natal Field Artillery cancelled Melmoth Zululand DE 9 / 07 with Pietermaritzburg arrival cancellation.



Fig.3: Usutu kraal, the principal residence of King Dinuzulu ka Cetshwayo near Nongoma, Zululand.

POSTAL RATES – VALID FROM 1 APRIL 2017

Compiled by Robin Messenger, SA Stamp Study Circle

Domestic	New Rate	Old Rate	Increase
Letter	R c	R c	%
Small DL	3.90	3.60	8.33
Medium B5	7.80	7.15	9.09
Large B4	9.55	8.75	9.14

Domestic Postcards: Same rates as letters.

Registered letters, with insurance option.

Compensation up to R100.00 at no additional fee. Insurance for higher amounts is available for an additional fee based on a sliding scale. The maximum insured value is R2,000.00 for which the fee is now R156.05 (previously R142.80, an increase of 9.20 %).

Small DL. (3.90 + 23.40)	27.30	25.00	9.20
Medium B5 (7.80 + 23.40)	31.20	28.55	9.28
Large B4 (9.55 + 23.35)	32.90	30.10	9.30

International

Registration fee.	36.95	33.80	9.32
-------------------	-------	-------	------

There is no insurance option for international letter post.

Aerograms	5.85	5.35	9.35
Postcards – Airmail	7.90	7.25	8.97
Postcards – Surface	4.80	4.40	9.09

Airmail letters – Southern Africa

Small DL	7.10	6.50	9.23
Medium B5	25.80	23.60	9.32
Large B4	40.10	36.70	9.26
Small packets (per 100 g)	22.70	20.80	9.13

Airmail letters – Rest of the world

Small DL	9.15	8.40	8.93
Medium B5	31.20	28.55	9.28
Large B4	52.90	48.40	9.30
Small packets (per 100 g)	40.00	36.60	9.29

New rates taken from *Government Gazette*, Vol. 619, No. 40584 (30 January 2017).



Fig.4: Letter card addressed to 'Lieut A B Charter, Composite Regiment, Vryheid'. Cancelled Pietermaritzburg JA 3 / 08 with arrival cancellation.

Wednesday, 11th to Saturday 14th October 2017

A GREAT COLLECTION STARTS WITH COMMITMENT
Participate in the 2017 National Stamp Exhibition in
JOHANNESBURG

Accepted entries, together with your frame fees:
DONT DELAY - SEND TODAY!



- ☆ GREAT LOCATION
- ☆ INTERNATIONAL DEALERS
- ☆ LOCAL STAMP DEALERS
- ☆ AMPLE SAFE PARKING
- ☆ COMPETITIVE EXHIBITS
- ☆ PUBLIC OPEN DAYS

PROUDLY HOSTED BY



once again to be held at The Italian Sports Club
BEDFORDVIEW





The Union 1935 KG V Silver Jubilee Issue: Joined Paper stamps

by André du Plessis, Pretoria Philatelic Society and Neil Donen*

The Union of South Africa Silver Jubilee stamps were printed by the rotogravure printing process. A Goebels AG printing machine was used, permitting sequential printing in a single operation. Paper was supplied in the form of large rolls. Already gummed on one side, the paper was fed through the machine during the printing process.

The rolls of paper necessitated some joining by the manufacturer and, occasionally by the printer, when the beginning of one roll had to be joined to the end of another. The number of joins in a roll varied, but on average were two or three. Each roll printed thousands of sheets and great care was taken to prevent printers' waste and damaged or partially printed sheets (including the joined sheets) from being included in the public distribution of the printed stamps. As a result, not many of these have found their way into the hands of collectors¹.

The overlap, when joining was done by the manufacturer, was generally between 10mm and 35mm with irregular edges. Joining was done with the same adhesive as was applied to the rest of the paper.

During printing the joining was by means of fairly narrow self-adhesive strips with straight edges and a narrow overlap².

Hagger, on page 43, wrote: "Stamps printed over this join are described as having *Joined Paper* and they derive their importance from the fact, particularly where the join falls near the middle of the design, that if the two thicknesses of paper are separated, there is left a stamp which is partly unprinted"².

Joined papers for the Silver Jubilee issue were first reported some weeks after the stamps had been placed on sale on 1 May 1935. A brief note in the June 1935 (page 87) issue of *The SA Philatelist* stated: "...a writer from Bloemfontein reports that a sheet of the 1d

denomination, with 'joined paper' variety was recently discovered in a small post office in the Orange Free State. He would like to know whether any others have been found."

To date I have been able to identify four ½d and two 1d examples of joined paper, all in horizontal pairs (see table). I am convinced that only two sheets (six horizontal pairs) for the ½d and one sheet (three horizontal pairs) for the 1d were produced. All examples show manufacturer joins. These stamps, in my opinion, qualify to be amongst the rarest of items of Union of South Africa stamps.

Shown below are examples of manufacturer joined paper and those from the printer - 1930 Pretoria Pictorials.

EXAMPLES OF JOINED PAPER



½d definitive issue of 1930 showing Manufacturer Joined Paper

At Right- ½d Unhyphenated coil issue of 1930 with Printer Joined Paper.

Note:

a) Narrow adhesive strip joining the two stamps.

b) Joined paper showing etching error with two congruent 'South Africa' headed stamps rather than the alternating English and Afrikaans ('SuidAfrika') headed stamps. This etching error caused two English and two Afrikaans stamps being printed se-tenant - the only occurrence in South Africa Union philately



UNION OF SOUTH AFRICA SILVER JUBILEE JOINED PAPER STAMPS

VALUE	ITEM	JOIN ON ROWS	PRINTING	SOURCE
½d	Block of 8; Row 9-12 / Column 1-2	10-11	2nd	A du Plessis
	Block of 6; Row 9-11 / Column 3-4	10-11	2nd	Grosvenor 25 May 2004 Sale 17 Lot #1391
	? Row 10-11 / Column 5-6	10-11	2nd	Unknown
½d	Block of 10; Row 16-20 / Column 1-2	16-18	2nd	D Scheepers
	? Row 16-18 / Column 3-4	16-18	2nd	Unknown
	Block of 12; Row 15-20 / Column 5-6	16-18	2nd	Sandafayre 26 April 2016 Sale 7252 Lot #7976
1d	Block of 8; Row 17-20 / Column 1-2	18-19	1st	D Scheepers
	? Row 18-19 / Column 3-4	18-19	1st	Unknown
	Block of 12; Row 15-20 / Column 5-6	18-19	1st	Sandafayre 26 April 2016 Sale 7252 Lot #7977

The following images include all the known 'Joined Paper' examples from the 1935 Union of South Africa Silver Jubilee issue. Tables are included with listing of flaws appearing on the stamps which allow one to differentiate between the different printings.



* Neil Donen lives in Victoria, British Columbia, Canada. He is a member of the King George V 1935 Silver Jubilee Study Circle and is currently the editor of its journal, *The Flagstaff*. He is a postal historian of the 1935 Silver Jubilee issue together with interests in Aerophilately and Canada.

½d – 2nd PRINTING ROWS 10 – 11



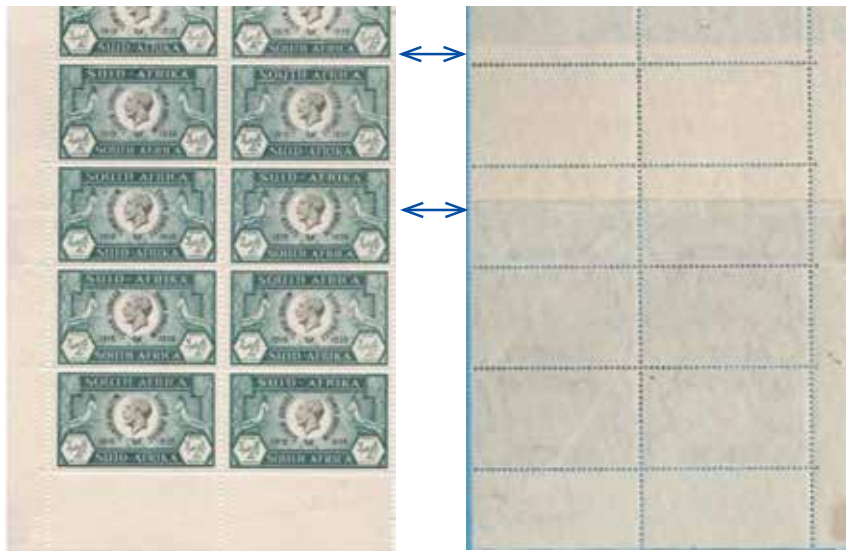
Columns 1 – 2

Columns 2 – 1



Columns 1 – 2

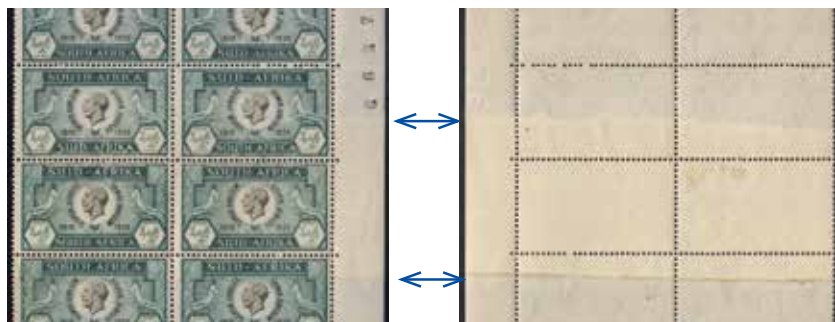
½d – 2nd PRINTING ROWS 16 – 18



Columns 1 – 2

Columns 2 – 1

½d – 2nd PRINTING ROWS 16 – 18



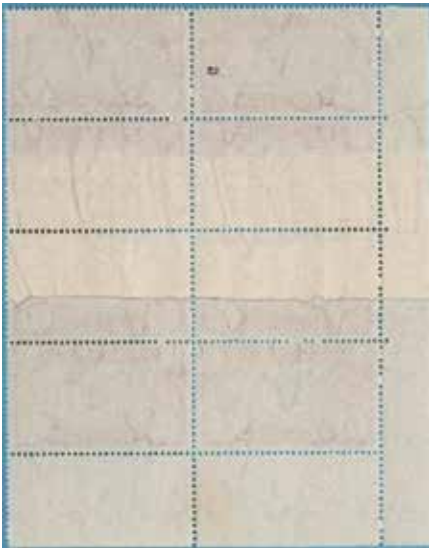
Columns 5 – 6

Columns 6 – 5

½d HEADPLATE CHARACTERISTICS		PRINTING	
R/C	DESCRIPTION	1st	2nd
9/1	Tiny spot just before 'J'	●	●
9/3	Line in left margin halfway down Spot in left figure of left value tab	●	●
10/1	Tiny dot between 'IL' and '19'	●	●
10/3	Dark mark between 'KA'	●	●
10/4	Spot behind head	●	●
11/2	Tiny spot just below and behind ear	●	●
12/1	Spot in front of forehead	●	●
12/2	Spot in front of forehead	●	●
15/5	Spot in head	●	●
15/6	Tiny spot under chin	●	●
16/1	Gash under ear	●	●
16/6	Spot over 'E' of JUBILEE Line up from 'I' of SILVER	●	●
17/1	Spot on neck at level of chin	●	●
17/2	Spot on cheek	●	●
17/5	Spot in right figure of value tablet	●	●
17/6	Faint spot before 'S' of SILVER	●	●
18/1	Spot in 'S' of SUID	●	●
18/2	Spot under 'L' of JUBILEUM Large white band across King's neck Vertical hairline through '3' of 1935 to level of base of right springbok's horns	●	●
18/5	Spot in right figure of value tablet Tiny spot at bottom of left figure of value tablet	●	●
19/1	Spot above and close to '1935' Vertical line up through 'VER' of SILVER	●	●
19/2	Spot under 'IL' of JUBILEUM	●	●
19/5	Stroke on 'R' of SILVER Vertical line at base of neck	●	●
19/6	Spot in margin under 'S'	●	●
20/1	Small mark above 'M' of JUBILEUM	●	●
20/2	Hairline over 'V' of SILVER	●	●
20/5	Curl just in front of ear Spot before 'S' of SILVER Vertical hairline through head	●	●
20/6	Tiny nick in bottom of ear	●	●

½d FRAMEPLATE CHARACTERISTICS		PRINTING	
R/C	DESCRIPTION	1st	2nd
9/1	Hairline in right margin near tail		●
9/2-3	Small horizontal line connecting 2 stamps	●	
9/3	Line from margin through left Protea		●
9/4	Two hairlines through right springbok's head		●
10/1	Spots before and above 'S' in SILVER	●	●
10/3	Large spot behind right springbok's head	●	●
10/4	Hairline over 'J' in JUBILEE	●	●
11/2	Spot under right springbok's belly	●	
11/3	Spot in white ray on left springbok's head	●	●
12/1	Spot over left springbok's back	●	
12/3	Spot in front of right springbok's nose	●	●
15/1	Tiny spot behind King's head		●
15/5	Line through top of 'IKA' of AFRIKA	●	
15/6	Line through 'D-AFRI'		●
16/1	Spots behind left springbok Spot near '2' of left ½d Spot under base of King's neck		●
16/6	Spot on top of 'U' of JUBILEUM		●
17/2	Spot in top left Protea		●
18/1	Blob in front of left springbok at level of horns Spot above King's forehead Spot under left Springbok above 'ST' of POSTAGE		●
18/2	Spot in rays after 'M' of JUBILEUM Green spot under base of King's neck	●	●
18/5	Line from top frame-line to point of first 'A' of AFRICA		●
19/5	Green line in outside right margin		●
20/6	Green smear in bottom selvedge		●

1d – 1st PRINTING ROWS 18 – 19



Columns 1 – 2



Columns 2 – 1



* Gumtree 14/5/1935 written in pencil in the margin is most likely when and where it was bought. This is a railway station with Post Office near Ficksburg in the then Orange Free State. It is about 170 km from Bloemfontein



Columns 6 – 5



Columns 5 – 6

1d HEADPLATE CHARACTERISTICS		PRINTING		
R/C	DESCRIPTION	1st	2nd	3rd
15/5	Spot in head	●	●	
15/6	Tiny spot under chin	●	●	
16/1	Gash under ear	●	●	●
16/6	Spot over 'E' of JUBILEE Line up from 'I' of SILVER Spots in front of right springbok	●	●	●
17/1	Spot on neck at level of chin	●	●	●
17/2	Spot on cheek	●	●	
17/5	Spot in right figure of value tablet	●	●	
17/6	Faint spot before 'S' of SILVER	●	●	
18/1	Spot in 'S' of SUID	●	●	
18/2	Spot under 'L' of JUBILEUM Large white band across King's neck Vertical hairline through '3' of 1935 to level of base of right springbok's horns	●	●	●
18/5	Spot in right figure of value tablet Tiny spot bottom left figure of value tablet	●	●	
19/1	Spot above and close to '1935' Vertical line up through 'VER' of SILVER	●	●	●
19/2	Spot under 'IL' of JUBILEUM	●	●	
19/5	Stroke on 'R' of SILVER Vertical line at base of neck		●	●
19/6	Spot in margin under 'S'	●	●	
20/1	Small mark above 'M' of JUBILEUM Spot at base of neck	●	●	●
20/2	Hairline over 'V' of SILVER Spot on head	●	●	
20/5	Curl just in front of ear. Spot before 'S' of SILVER. Vertical hairline through head	●	●	●
20/6	Tiny nick in bottom of ear	●	●	

1d FRAMEPLATE CHARACTERISTICS		PRINTING		
R/C	DESCRIPTION	1st	2nd	3rd
15/1	Single scratch through 'D-AFRIK' Scratch extending from left tablet to 'K' (double scratch)	●	●	●
15/2	Stroke between right '1' and 'd'	●	●	●
15/6	Spot over 'V' of SILVER	●	●	●
16/1	Red scratch through top of SUID-AFRIKA		●	●
16/2	Spot over '1' of 1910 Line through 'FRICA' into right margin	●	●	●
16/5	Line through top of 'SUID-AFRIKA' Line through top of 'H AF' of SOUTH AFRICA		●	●
16/6	Spot in white line under 'D-A' of SUID- AFRIKA	●	●	●
17/6	Spot on right springbok's nose	●	●	●
18/2	Spot on right springbok's neck	●	●	●
18/5	Spot in edge of right 1d Spot in front of left springbok's head	●	●	●
18/6	Dot in edge of right '1' of 1d Line in margin under 'E' of INKOMSTE	●	●	●
19/2	Stroke from right frame-line into margin	●	●	●
19/5	Spot in front of right springbok's knees	●	●	●
20/1	Spot in left springbok's neck	●	●	●
20/6	Spot at base of right 1d Spot under left springbok's nose Spot close to right 'd' of 1d	●	●	●

Acknowledgements:

Permission to publish the respective images is acknowledged with thanks: Danie Scheepers RDPSA and the following philatelic auction houses – Grosvenor Philatelic Auctions and SANDAFAYRE Auctions.

References:

1. Gilbert, G.N. 1934. The Rotogravure stamps of the Union of South Africa. *The South African Philatelist*. May pp. 67-8.
2. Hagger, S.J. 1986. *The Stamps of the Union of South Africa. 1910-1961*. Handbook Catalogue. Cape Town: Philatelic Federation of Southern Africa, p. 43.

BILL BARRELL LTD

UNUSUAL GB KING GEORGE VI.

It has always slightly puzzled me why GB King George VI is undercollected compared to the demand for Commonwealth KGVI ! At stamp shows there is enormous interest in the latter (and rightly so) but the former not so much ... and yet there is much of interest. True, proofs are almost impossible to obtain but the high values offer a good study, there is a wonderful range of usages, fascinating propaganda forgeries, printing varieties etc etc We offer, subject unsold some more unusual items.



1941 Jersey arms - rare imperf pair plate proof in black. (ref 98505) £475.00

1941 2½d (SG489) Good o.g. vertical pair ERROR OF PERFORATION. Unusual. (ref 78563) £175.00



A selection of propaganda forgeries- 1d 'World Bolshevism' £400.00; 1d 'Castelle Gandolfo' £450.00; 1d 'World-Judaism' £375.00; 2d 'St Lucia' £35.00; 1d 'St Lucia' £45.00; 1d 'Borneo' £200.00. Many others available.

War-Tax essay - 2d overprint in black (ref 94893) £175.00



'Victory' essays (ref 98518) £85.00



Propaganda Forgery- 'used' set of 6 overprinted 'Liquidation of Empire Jamaica'. Scarce as a set. (ref 91545). £250.00

PO Box 10494, Grantham, Lincolnshire,
NG31 0HS, United Kingdom
01476 594698

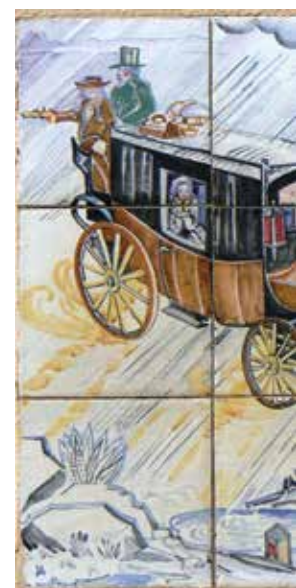
e-mail: bill@barrell.co.uk *website:* www.barrell.co.uk

PART 24A

DECORATED POST OFFICES

BY Prof Garry Osthoff, OFS PS Bloemfontein

Burgersdorp Part 1 of 2



The history of the origin of the Burgersdorp Post Office has previously been described by Prof Pieter Maritz in the very first article of the series (*The SA Philatelist* - Dec. 2010 and Feb. 2011). The Post Office was built in 1933 and bears no less than 14 ceramic tile panels, all painted by Wilgy Agnes Van-Hall. These are the most decorations seen on a single post office which we have described in this series.

The art works illustrate two themes: the settlement of pioneers in the interior of South Africa and mail transport. These panels will be described in two parts.

On the extreme left of the western wall in Piet Retief Street, as well as the southern wall, respectively four and six small panels of 3x3 ceramic tiles are mounted. The theme of these ten panels depicts modes of transport, in most cases, specifically for conveying mail.

The first panel shows a native carrying a letter in a cleft stick. The letter is sealed with red wax and the cleft stick was used to avoid the letter being soiled by sweat and dirt. Note the beadwork around the right ankle. The plant might be falling stars (*Crocsmia aurea*) with buds not yet opened.

On the second panel appears a rider on horseback. In the background is a farm house in Cape Dutch architecture, and the large cypress trees suggest a settled farm, perhaps at the turn of the 20th Century. With a rifle slung on his back, it could possibly be a field post messenger during the Anglo Boer War.

Next is a horse-drawn coach. This type of coach was not familiar in South Africa, but rather in England. It would appear that a tense situation is being experienced; based on the woman passenger holding her face and the

man standing at the back pointing something that could be a pistol. Rain is pouring down, the horses are running and the scene is completed with a cactus in blossom(!)... a plant that was not very common in the wild in South Africa during the late 19th Century.

The train scene is really interesting, actually funny! The engine resembles Stephenson's Rocket of 1829. However, the tender is depicted with one axle instead of two, and instead of carrying coal and a water barrel, it only contains a bench for a driver and stoker. This train never ran in South Africa and also never pulled a carriage as shown. The tunnel in the background, through which the train was



supposed to have travelled, is also out of place. In the background is a woman with a yellow face: probably having fainted after her first sighting of the smoke spewing monster. One could ask why she was still unaccustomed to seeing a train by the time it was employed as

the fashion of the time, and a nanny carries the second sibling. The flat terrain with flat topped mountains may be anywhere in the central part of the country.

The train with brown coaches was typical of the South African Rail Transport at the time. The

The passenger ship with two smoke stacks and high masts is of a type built in the early 1900s. The masts are out of proportion, being too high and the smoke stacks too short and it was unusual to have a ship painted white. It is difficult to identify the ship by the information



passenger carrier, as well as tunnels constructed for travel purpose?

On Taylor Street the panels illustrate mail conveyance which was modern in the 1930s. The first tile is a street scene in front of a house of Cape Dutch architecture, where three children, and their dog are accompanied by their care-giver to post some letters in the well known red mail box.



The next panel shows a red mail van also of 1930s vintage speeding past pedestrians. It bears the letter HPK: *Hoofposkantoor*. A typically dangerous scene is depicted where a ball rolls into traffic and a child, wanting to run after it, is being restrained by the mother. The mother is well dressed according to

locomotive has several features of a Class 16D or 16DA which was introduced between 1925 and 1928; three pairs of drive wheels (4-6-2 arrangement), broad steam pipes to the pistons and support bars of the scoop. However, the tender and scoop are of earlier Class 16's. The boiler door is on front hinges on the right, which is incorrect! The yellow fields to the left possibly depict wheat fields, placing the scene in the Western Cape, very far from Burgersdorp.

The biplane on the next panel is probably a fighter plane, because it bears British roundels on the wings and fuselage sides. The flag insignia on the aileron is French! British aircraft bear the red on the leading edge and blue on the trailing edge. It is driven by an air cooled radial engine. The biplane fighters in South Africa in the 1930s had liquid cooled inline engines and the red of the insignia was painted orange.

given and the very large flag does not identify any home country.

After all the different methods showing how the mail was conveyed, it is finally delivered by hand on the last panel. The mailman wears a black uniform, pith helmet and carries a leather mail bag. The windows of the house suggest a Cape Dutch style, and the wall around the property places the scene somewhere in the Cape Province or Karoo. The outfits of the children and flowering bottle brush suggest a summer season.

References:

- Telford A.A. (1972) *Yesterday's Dress. A history of costume in South Africa;*
- Aircraft Reference Files;
- www.wikipedia.org





GERMAN OCCUPATION OF AUSTRIA – APRIL 1938

by Jan van Beukering OFS Philatelic Society

As early as 1934 the Austrian Nationalist Socialists planned a putsch with German support and the then Chancellor Dollfuss was assassinated. The putsch was quelled and Chancellor Kurt von Schussnich was appointed. Schussnich ruled as a dictator in opposition to the Nationalist Socialists and the Social-Democrats. In 1936 a non-intervention agreement was signed with Hitler, who planned incorporation of Austria into the German Reich, against the agreement clauses, and had the pro-German Seiss-Inquart installed in the government in early 1938. Chancellor Schussnich called for a referendum on the political position of Austria but his resignation was demanded by the Germans. He resigned on 11 March 1938.

German troops entered Austria on 13 March 1938 in preparation for the annexation on 10 April, which was largely supported by the Austrian public. Much propaganda was prepared by the quasi-German controlled government and postal cancellers were prepared with slogans and cachets advertising Hitler's impending arrival in Vienna.

German stamps were in use from 4 April 1938, but the use of Austrian stamps and postal stationery remained valid until 31 October of the same year.



Fig.4: VIENNA 1 November 1938 machine cancel. Late usage 'TELEGRAM AUF SCHMUCKBLATT !'



Fig.1: VIENNA 17 March 1938 machine cancel with swastika 'DER FÜHRER IN WIEN' on Austrian stamp



Fig.5: Part Austrian Postcard VIENNA ' EIN VOLK, EIN REICH, EIN FÜHRER'

Fig.6: VIENNA Early use of German stamps 12 March 1938 6 WIEN 3f



Fig.2: VIENNA 7 April 1938 machine cancel with swastika 'Am 10. April Dem Führer Dein Ja' on German stamp



Fig.7: Red business canceller adopted soon after the incorporation. Private machine cancel Men's Hattery with 'REICHSPOST' and German eagle.

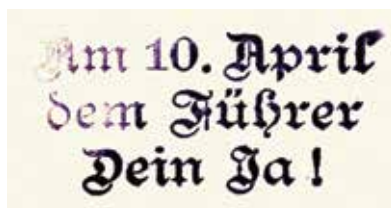


Fig.3: Cachet applied to letter from smaller towns HERMAGOR 'C' date stamp



Fig.8.

Later cancells clearly showed German influence in the design of cancellers, such as the VILLACH WINTER GAMES of 1939 with typical Reich (Gothic) lettering.



Stanley Gibbons

New Catalogues

Netherlands and Colonies

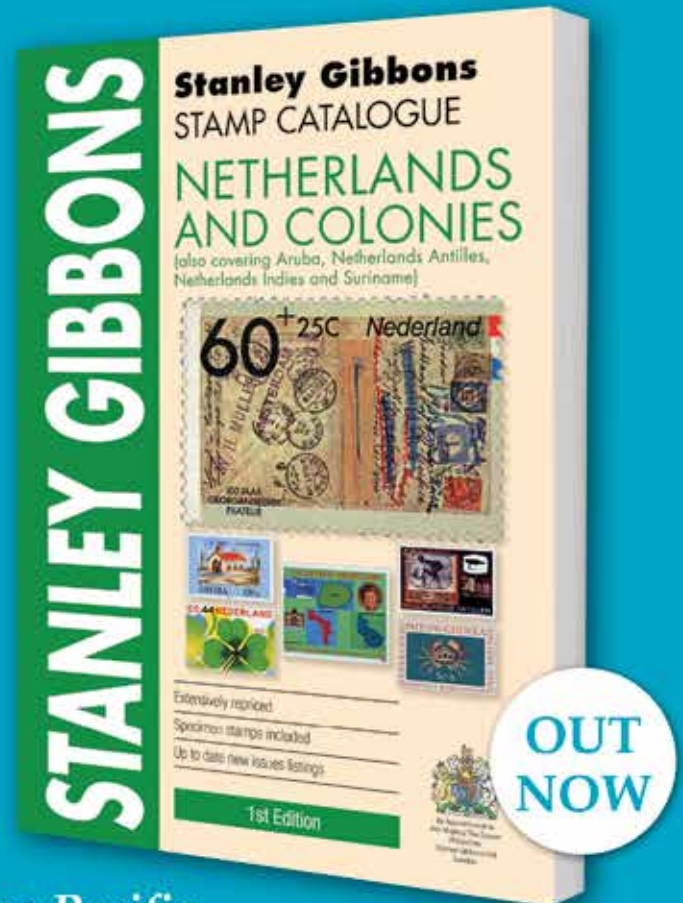
• 256 Pages • 1st Edition 2017

The only catalogue published in English which covers all the stamp issues of the Netherlands and Colonies in a single volume. It is a detailed and highly informative catalogue, ideal for any collector who specialises in the stamps of this area.

New for this edition:

- New first edition of this popular collecting area.
- Updated design indexes for The Netherlands and Netherlands Antilles to aid the collector in identifying and cataloguing their collection.
- Specimen stamps included for the first time.
- Prices fully revised with advice from specialist dealers to reflect current market conditions.
- Lots of new varieties listed and priced.

R1422-17 R650



Western Pacific

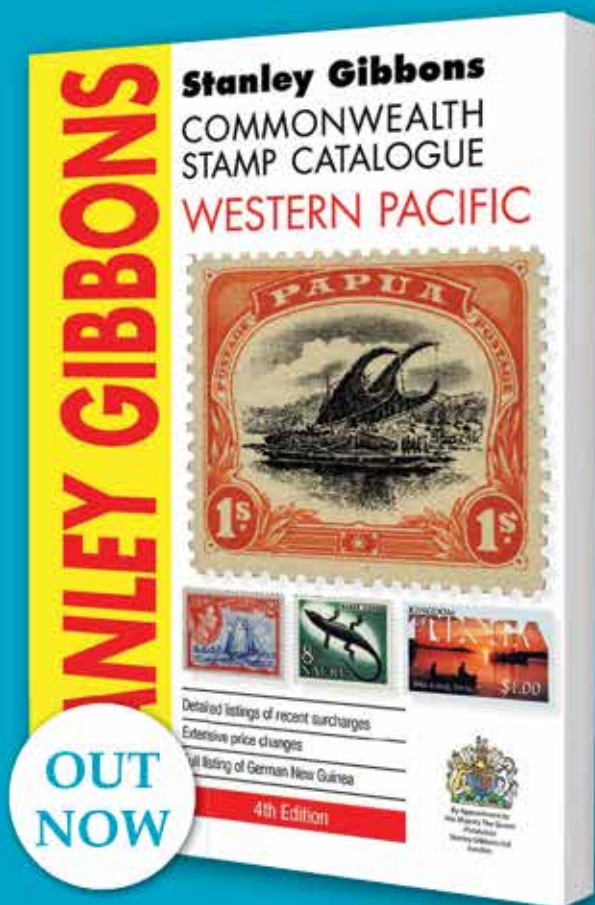
• 4th Edition 2017

This fourth edition of the popular Stanley Gibbons Western Pacific Catalogue lists and prices the stamps of Fiji, Kiribati, Nauru, Papua New Guinea, Solomon Islands, Tonga, Tuvalu and Vanuatu. Also includes Gilbert and Ellice Islands, German New Guinea, New Guinea, Papua, Niuafo'ou and the British and French issues of the New Hebrides.

New for this edition:

- The Specimen overprints for German New Guinea are listed and priced for the first time and in Tonga there are new notes on the detection of forgeries on the 1896 typewritten surcharges and on the settings of the 1962 Centenary of Emancipation overprints. Among a number of newly-listed varieties are the 'thin d' on the 2½d. Lakatois of Papua, while the complex surcharged 'Birds' definitives of Fiji have been re-written.
- Details of issues up to 1970 have been extracted from Stanley Gibbons 2017 Commonwealth and British Empire Catalogue. Later issues have been revised and updated especially for this catalogue

R2987-17 R725



Our representative is our Southern African distributor Peter Bale
of Peter Bale Philatelics (cell: 082 330 3925) to contact for all of your requirements.

BRITISH SOUTH AFRICA COMPANY

RHODESIA THE LARGE ARMS ISSUES — 1896 - 1897

by J P D Flanagan RDPSA FRPSL, Life Vice President Rhodesia Study Circle



The Preceding Issues

The first stamps were produced for the British South Africa Company in 1892, the so-called Small Arms Issues. These stamps had as their key design element the Coat of Arms of the British South Africa Company. The smaller sized stamp (Fig.1) denominations were 1d, 6d, 1s, 2s, 2s6d, 5s and 10s, while the larger size (Fig.2) were denominated 1 Pound, 2 Pounds, 5 Pounds and 10 Pounds. The duties of ½d, 2d, 4d and 8d were significant omissions and these were then recognised as necessary by overprinting the 6d and 1s denominations of this issue - the 6d duty being surcharged ½d, 2d and 4d and the 1s duty being surcharged 8d. The surcharge was applied by Bradbury Wilkinson & Sons Limited of London, the printers of the original 1892 issue. It was quickly recognised that various denominations were still 'missing' from the issue and a new design was commissioned, this time as bi-colour stamps with the value tablet being printed from a separate plate to the rest of the stamp. Accordingly, Bradbury Wilkinson produced the ½d, 2d, 3d, 4d, 8d, 3s and 4s duties which were recess printed, with the value tablet printed typo (Fig.3 as example). All these stamps were printed on white to whitish, on both watermarked and un-watermarked paper.



Figs.4-7

of the Crown was not contemplated. This is confirmed by inspection of the Essays and the first bi-coloured Plate Proofs and the Perforated Colour trials neither of which showed a Crown. The Essays also showed the duty at an angle of some 45degrees. Essays were produced, imperforate and in a range of colours. These are illustrated in Figs. 4-7. Perkins Bacon produced Die Proofs of the Arms vignette, which was very much a formality, with its direct derivation from the Company's design. The name and decorative elements did not form part of this Die (Fig 8).



Fig.1 SG 1

Fig.2 SG13 perforated SPECIMEN

Fig.3 SG 20

The 1896 Large Arms Issue by Perkins Bacon

In 1896 the Company decided that it needed a new set of stamps, and without too much imagination set about a new design, which design prevailed with the Company's Coat of Arms as the key element thereof. In this case the stamps were printed by Perkins Bacon of London, on wove, un-watermarked paper. The process involved in producing these stamps was a convoluted one, with many steps involved in the design and printing processes.

It was decided that there would be two components to the design, a frame consisting primarily of the value tablet and the vignette comprising the base of the Company's Coat of arms to which had to be added the name 'BRITISH SOUTH AFRICA COMPANY - INCORPORATED BY ROYAL CHARTER' and decorative elements. Initially the incorporation



Fig.8

Copies of Die Proofs of the vignettes, produced by Perkins Bacon saw two designs, both incorporating the name and decorations and at the top, on the one hand a flattish ornament and on the other a three pointed ornament. Both these Dies are

numbered '256' (Colin Hoffman Collection, Figs 9 and 10), which Dies can be regarded as the base of the approved design. There was however no heraldic influence. The design represented the Company's name and the parts where the denomination of each duty would be slotted-in; significantly no Crown was shown.

The value tablet design was progressing and in a departure from the initial essays and from an Un-appropriated Die of the Value tablet, it was decided to show the duties in a vertical format. This design was developed to an advanced state, with Die Proofs and Colour Trials being produced and Paper trials being



Fig.9

undertaken. The design without the Crown, which formed part of the final adopted design is illustrated by the Plate Proofs, printed on either un-gummed paper or on Board in a range of colours most of which did not accord with the colours of the issued stamps (Figs.11 and 12).

Further, a range of Colour trials was produced, in unissued colours, all in the 8d denomination, perforated either 11½ or 12½ (Fig.13 and 14).

Prior to the production of these trials, the development of the frame design, which was fundamentally the value tablet(s), had progressed. An early Un-appropriated Die without Crown and with duty values at 45 degree angle shows early development of the frame plate (Fig.15).

It was finally agreed to incorporate the Crown at the top of the vignette design in place of



Fig. 10

the flat and / or three pointed motif and this saw the production of the approved Die Proof of the completed design as indicated by illustrations of the two Die Proofs - '1st DIE' and '256' (Figs.16 and 17).

From these Dies the 1s perforated Colour Trial in unissued colours was produced. The 1s Trials are very scarce, particularly when compared with those in the 8d denomination (Fig.18).

One more hurdle remained before the stamps could go into production. The paper to be used had to be selected. And this produced an intriguing aspect of the issue. The United Kingdom Queen Victoria 1d with the 10/- Large Arms value tablet superimposed over the original Skipper & East essay of 8 stamps



Fig. 11



Fig. 12



Fig. 13



Fig. 14



Fig. 16

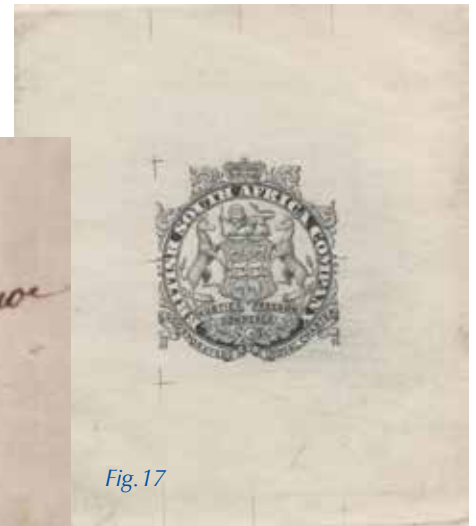


Fig. 17

(Fig 19) was used together with printers' Perkins Bacon waste sheets of the 1895 Sarawak definitive issue, to ensure the correct registration of the duty plates - 'The Sarawak Trials' (Fig 20).

The 1897 Large Arms Issue by Waterlow

In 1897 a further issue of the Large Arms stamps was produced, this time by Waterlow & Sons Limited of

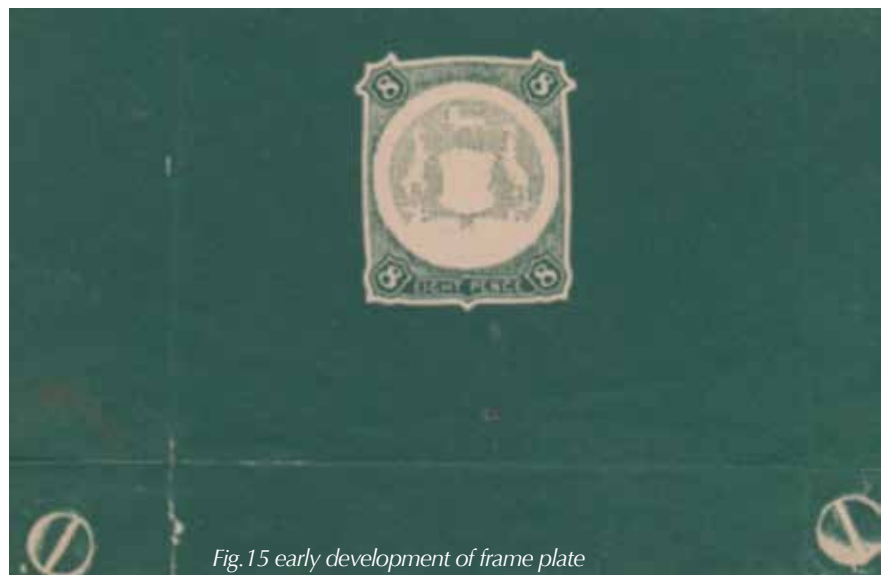


Fig. 15 early development of frame plate

London, on un-watermarked paper. The Die was re-engraved, effectively seeing a redesign of the stamps. In this case the scrolls do not go beneath the legs of the Unicorn and there is no evidence of Plate numbers being printed on the sheets. This issue comprised 8 denominations: ½d, 1d, 2d, 3d, 4d, 6d, 8d and 1 Pound. The vignette was printed Recess and the value tablet Typo. They were printed on un-watermarked paper and were Perforated 13½ to 16. Waterlows produced Die Proofs of the frame plate as part of their process. The Composite Dirty Book Die Proofs, with Printer's punch holes and 'CANCELLED', are illustrated (Fig 21).

The Die Proof illustrated in Fig.22, for the 1 Pound duty, is from the re-engraved plate prepared by Waterlow.



Fig.18



Fig.19

This Die clearly shows the change to the design, particularly the scrolls which unlike the Perkins Bacon printings, do not go through the legs of the Unicorn see Fig. 23.

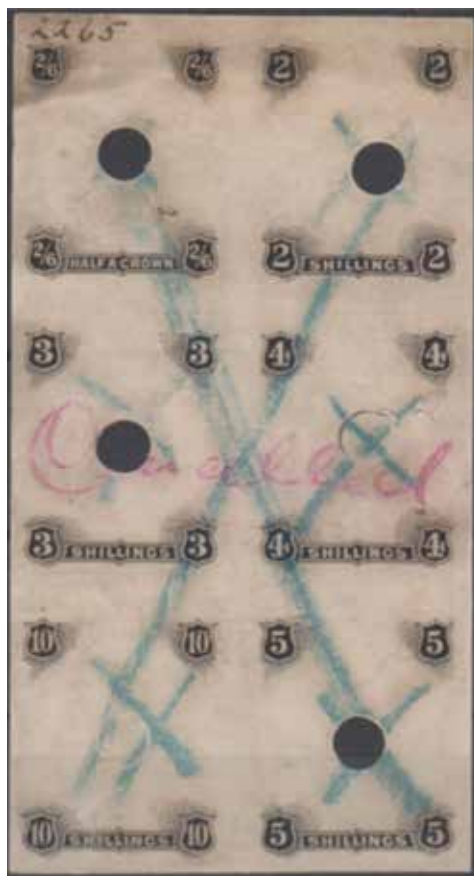


Fig.21



Fig.20

The Dies of the 1896 and 1897 Large Arms Issues

Although it is commonly spoken of that there were three separate Dies, it must be noted that there were two printers involved, Perkins Bacon for the 1896 issues, where there are two distinct Dies - Die I and Die II - and Waterlow & Sons Limited, of London who re-engraved the Die for the 1897 issue. In this case the vignette was engraved by J. A. C. Harrison and the frame by Bain or Rapkin. In essence the distinguishing features between the Perkins Bacon Dies I and II and the re-engraved issue by Waterlow are:

• Perkins Bacon

Die I - Dot behind Tail of left hand Unicorn and body of Lion lightly shaded, scroll between legs of the Unicorns

Die II - NO dot, body of Lion is heavily shaded and scrolls between legs of the Unicorns

• **Waterlow re-engraved Die** - NO Dot and Scrolls do NOT go between legs of the Unicorns.

It is thus submitted that the often used "Die I, Die II and Die III" terminology for these issues is incorrect.

The 1896 issue of the Large Arms is the Die I issue. This issue was printed by Perkins Bacon in 9 denominations: 1d, 2d, 3d, 4d, 6d, 8d, 1s, 3s and 4s. These were printed from Plates 1 and 2. The Plate Number is

evident in the vertical selvedge at the top left of each sheet, and is the Plate Number in a circle. The vignette was printed Recess and the value tablet Typo. They were printed on un-watermarked paper and were Perforated 14.

In 1896, a second issue, Die II was produced. Here there is no dot behind the tail of the Unicorn and the body of the Lion is heavily shaded. The issue was printed by Perkins Bacon in the following 9 denominations: ½d, 1d, 2d, 4d, 6d, 2s, 2s6d, 5s and 10s. The Plate Number is evident in the vertical selvedge at the top left of each sheet, and is the Plate Number in a circle. The vignette was printed Recess and the value tablet Typo. They were printed on un-watermarked paper and were Perforated 14.

Stamp Production Errors

The Large Arms issues were generally well printed and the detailed printing and plating issues are well covered in the monograph by Howard B. Young. For purposes of this broad overview, there were however a number of significant errors, in both the Perkins Bacon and Waterlow printings, all occasioned by perforation errors. These include:



Fig.22 The issued 1 Pound stamp was black & red brown on green or white paper.



Fig.23 Detail of Scroll engraving - l.t.r: Perkins Bacon and Waterlow

• **Perkins Bacon Printing**

- Die 1:4d Imperforate between pair
- 8d Imperforate between pair
- 8d Imperforate pair
- 3s Imperforate pair

• **Waterlow Printing**

- 3d Imperforate between vertical pair
- 4d Imperforate between horizontal pair
- 8d Imperforate between vertical pair - only known used

The Stamp Usage

The issues also fell at a very interesting time in the history of Rhodesia. In 1896 the Matabele Rebellion produced some important and interesting postal history where Large Arms stamps were used to pay for postage (Fig.24). The Boer War similarly produced significant usage in a theatre of the war less prominent than others in the war. And of course the usage for Revenue purposes was very significant. Mining activity was at a peak, new claims were being registered, mines were being inspected and there were also duties payable on a range of commercial instruments such as General Dealer's Licences, Hunting Licences and the like. And of course the stamps were issued for both Postage and Revenue purposes.

The material illustrated herein, with the exception of Figures 9 and 10 are the property of the author. Figures 9 and 10 are the property of Mr Colin Hoffman RDPSA and are used with his express permission.



Fig.24. Matabele Rebellion cover from C Troop soldier to his mother with Die 1 6d franking

Bibliography:

- Rhodesia Study Circle Journals;
- Hoffman C. 1896 *First Large Arms*;
- Young H. - *Monograph*;
- Auction Catalogues;
- Personal Research

JOHN & MARK TAYLOR

'RHODESIA'



1910 The Double Head £1 Error of Colour

The imprint copy from the foot of the sheet 1 of only 2 printed.

Ex: Tom Allen & Bryant Rose. 'B.P.A. Cert.'

Address: P.O. Box 37324,
London N1 - 2YQ

Tel: 020 7226 1503
Fax: 020 7359 7456

email address: markjtaylor@btinternet.com



REVISITING UNION ROLL STAMPS IN SHEET FORM

by M.J.H. Tonking RDPSA, South African Stamp Study Circle

During the Union period, seven of the twenty-eight roll stamp issues appeared in sheet form. These are of particular interest on account of the cylinder transpositions, which occurred during printing. Stamps surplus to requirements for roll stamps were cut into sheets, each of 240 stamps (20 rows of 12). The sheets were issued without bottom or top margins, although the side margins were left intact. In some cases, the study of the roll stamp sheet issues made it possible to identify printing cylinder transpositions. A brief description of all seven sheet issues follows:

R 12S - 1d. value, 1934 - Unhyphenated Rotogravure. Figs.1 and 2

This was the first roll stamp to be issued in sheet form and had pale grey vignettes and pale carmine-rose frames. A thin irregular red cross was printed in the left margin between rows 18 and 19. Since there was no interior cylinder marginal mark, regular cylinder transpositions occurred. The watermark was generally upright and those with inverted watermark are rare.

R 14S - 1/2d. value, 1935 – First Hyphenated Issue. Figs.3 and 4

At least three different printings are known, each with different cylinder transpositions. For some unknown reason the printing cylinders were reversed, resulting in the sheet numbers being printed in the left instead of the right margin. This was the only time in the sheet roll stamps that this occurred. In order to accommodate the Grover single row perforator, the cylinders were etched to allow for a narrow gutter between stamps 6 and 7 of each row. A short green line was printed in both margins between rows 21 and 22.

R 15S - 1d. value, 1935 – First Hyphenated Issue. Figs.5 and 6

As in the case of the R 14S 1/2d. issue, the sheet layout was again printed with a narrow gutter between stamps 6 and 7 of each row and the perforation was again 13,5. Short red lines were printed in both margins between rows 21 and 22. Since the sheets were not always guillotined along these lines, it is uncertain as to the reason for them. Rows 3 and 4 were re-used for rows 21 and 22. No cylinder transpositions are known.

R 17S - 1/2d. value, 1940 – Second Hyphenated Issue. Figs.7 and 8

As in the case of the two previous issues, a twenty row multi-positive was used and rows 11 and 12 were re-used for rows 21 and 22. Short black lines were printed in left and right margins, 10 rows apart in one direction and 12 in the other. Since there were no exterior cylinder marginal marks, there were numerous cylinder transpositions normally over an even number of rows. Five figure black sheet numbers were printed in the right margin.



Figs.1 and 2, R12S

Above - Red cross in left margin opposite rows 18 and 19.

Row 18/1 - Red dot between left yardarms. Black dot in sunrays.



Figs.3 and 4, R14S

Green line in right margin between rows 21 and 22. Row 21 with darker frame.

Four figure black sheet number in left margin opposite rows 15 and 16.



Row 21.

Wider Gutter

Row 22.

Extra perforations in left margin. Figs.5 and 6, R15S

Drunken perforations.

Short red lines in left and right margins. Deeper etching of row 21 gives darker vignette.



Figs.7 and 8 R17S

Examples of interior cylinder marginal marks 10 rows apart. Opposite frame row 9.

Opposite frame row 19.



Figs.9, R19S
Short black and red lines, both margins below row 21 junction.



Figs.10, R20S
Black and red superimposed lines in both margins below row 21 junction.

Figs.11, R26S
Strip showing printer's guide line in right margin between rows 22 and 1.



R 19S - 1d. value, January 1937 – Second Hyphenated Issue. Fig.9

This roll stamp sheet issue was by far the rarest of all seven issues, as only about 500 sheets were sold. Rows 5 and 6 were re-used for rows 21 and 22. Short black and red lines were printed in the left and right margins, opposite the centre of row 22. There were two cylinder transpositions recorded.

R 20S - 1d. value, June 1940 – Second Hyphenated Issue. Fig.10

With about 5,000 sheets sold, this issue is not considered to be that scarce. Rows 17 and 18 were re-used for rows 21 and 22. Short black and red lines superimposed on each other were printed in the left and right sheet margins, 2mm below the junction of rows 21 and 22. The bright red frame colour serves to identify this issue. There were no cylinder transpositions apart from one very rare one, which occurred over three rows.

R 26S - 1d. value, October 1960 – Animal Series. Fig.11

This was the last roll stamp to be issued in sheet form. It was printed from cylinder 97 that was made from a 22 row multi-positive, of which only rows 2 to 21 were used. A short brown line was printed in the right margin between rows 22 and 1. This line was absent on earlier printings. Five figure black sheet numbers were printed in the right margin opposite every eleventh row. Since there were only 20 rows in the sheet and the sheets were not always guillotined in the same position, either a single number, a double set of similar or a double set of consecutive numbers, appeared on each sheet.

Reference:

The Stamps of the Union of South Africa 1910-1961 by S.J. Hagger



Philatelic Books & Catalogues

JANSSEN STAMPS, P O BOX 404, SIMON'S TOWN, 7995
 WWW.JANSSENSTAMPS.COM / TEL. 021 786 1548 (MO-FR.10 - 18) / Email: info@janssenstamps.com

Geo Judd - Postal Agent 1866 query

AVAILABLE: A COLLECTION OF THE SA PHILATELIST

I have a collection (probably virtually complete) of *The SA Philatelist* from 1954 to c. 2007 which belonged to my late father. I have no particular interest in the collection and would like to dispose of it to an individual or an organisation who would value the journals as my father did in life.

While my primary intention would be to find a good new home for the journals a degree of compensation, including transportation costs, would be happily received. However I have no idea of the possible value of the magazines. I would really appreciate some guidance on possible ways of ensuring that the collection can be best used in the interest of philately.

Peter Whitlock
8 Church Square.
P.O. Box 88. Graaff-Reinet 6280.
South Africa
Tel. : +27 49 891 0998.
Fax : +27 49 891 0129.
Cell: +27 82 782 3072
mailto:mwa@adsactive.com



When Malcolm Judd was living in South Africa he acquired this wrapper sent from a Post Office Agency to the Post Master General in Cape Town. It has what he presumes to be a receiving cds of 26 May 1866 and is sent from the P.O. Agent Geo. Judd.

Despite his best efforts when living in Cape Town, and since, he has been unable to ascertain where Geo. Judd was a P.O. Agent, the company that he acted for as seen on the wrapper, or the dates of his tenure.

The best links that he had so far are:

- Records of a G. Judd in the Albany Museum in the Parish of Graaff-Reinet in 1868.
- In 1888 the records state 'Memorial received from George Judd forwarding

Petition of Sterkstroom inhabitants re abolition of Periodical Court.

• Old Grahamstown Cemetery – Georgina August Judd b.1877 d.1933 (daughter? named after the father?)

• 1893 Petition of George Judd of Steynsburg (now Eastern Cape) re his minor son Alexander Edwin.

He asks if it's possible that a reader might be able to throw some light on this matter?

He further observes: "Strangely, in the publication *'Postmarks of the Cape of Good Hope'* by Robert Goldblatt, 1984 edition, my own review of the cds on this wrapper does not seem to be included in Chapter 5 of that publication; or am I mistaken (dash between Cape and Town and dot between Cape and Colony)?" Any assistance with his quest would be appreciated. Contact Malcolm C Judd atmalcolm@juddshome.com or 49-51 Avenida Dr Mateus Teixeira de Azevedo. Tavira, 8800-379, Portugal. Tel: +351 281328343



A Royal Mail Press Release

65th Anniversary of the Accession of HM The Queen

On 6 February 1952 His Majesty King George VI died peacefully in his sleep at Sandringham House. His eldest daughter Princess Elizabeth, who was in Kenya at the time, was proclaimed Queen at the age of 25.

To commemorate this event Royal Mail issued a new Sapphire Blue £5, High Value Definitive, with an iridescent overprint featuring the 65th Anniversary of Accession, on 6 February 2017.



Gold Proof Coin Cover featuring a £5 coin and £5 Sapphire Blue Definitive. Limited Edition of 50.

The Katschberghöhe Hotel Post

by Chris Mobsby RDPSA, FRPSL, RNCP. Witwatersrand Philatelic Society



In the world of Cinderella philately, the hotel posts from such countries as Switzerland, Austria and Hungary are comparatively familiar while postal material from such sources is considered especially desirable. A number of these mountain resorts operated mail services for the benefit of their guests, particularly during the winter months, when snowbound roads made access to the nearest post office possible only by sleigh. In some cases, such hotels issued their own postage stamps and I did illustrate a number of these in the course of my series of articles on the Local Posts of the World in past issues of *The South African Philatelist* – those from the inns of Bistra, Magura and the Hohen Rinne in the Carpathian Mountains of Hungary (August 2004), the stamps of St. Gothard (October 2006) and Rigi Scheideck (June 2013), both in the Swiss Alps, and of the Moserboden Hotel in Austria (April 2010). A similar service was instigated by Resi Kastner, wife of the owner of the Katschberg ski resort high in the Austrian Alps on the border between the districts of Carinthia and Salzburg.

Although there is no doubt that a genuine postal service was offered to residents of the guest house, it is apparent that Frau Kastner had, in addition, one eye on the philatelic market. It is on record (by the late Henry Tester writing in the *Cinderella Philatelist* in July 1977 and January 1985) that copies of the bulletin announcing the inauguration of the service together with examples of the stamps that were to be used were sent to a stamp dealer and a philatelic magazine, both in Vienna.

In the bulletin referred to above, it was stated that the post would be suspended once the national service was again able to operate on the mountainous terrain. Thus it ran from October 1932 until June 1933 and again from October 1933 until February 1934 when usage of the stamps was suspended by the Austrian Post Office. During this early part of their life, there were two separate printings of the stamps that were to be used; the 3 groschen dark blue being for post cards, a 6 groschen orange-red for letters and a 1 schilling violet for use on parcels.

Alpengasthof u. Skiheim „Katschberghöhe“

Wiedereinführung einer Privatpostzustellung
zwischen Rennweg in Kärnten und St. Michael im Lung. mit 15. September 1948

Bekanntmachung.

Nachdem aus „Erwartungsgründen“ die früher bestandene Postablage Katschberghöhe aufgelassen wurde und auch der Postdienst Rennweg-Katschberghöhe ohne jede Rücksicht auf den Bedarf eingestellt wurde, sind wir neuerlich gezwungen, eine **private Postzustellung** auf den Katschberg, bzw. zwischen den Talpostämtern Rennweg in Kärnten und St. Michael im Lungau einzurichten.

Sitz der Privat-Postablage ist der Alpengasthof Katschberghöhe auf dem Katschbergpaß.

Hiedurch ist eine schnelle Postverbindung zwischen dem salzburgischen Lungau und dem kärntnerischen Liesertal hergestellt und braucht ein Brief von Rennweg nach St. Michael bzw. umgekehrt **1 Tag** statt wie bisher 3 bis 4 Tage!

Zur teilweisen Deckung der damit verbundenen Auslagen - Betriebsstoff für ein Motorrad etc. - wird für jedes von uns beförderte Poststück eine Gebühr in Form von Privat-Katschbergmarken eingehoben.

Diese Zuschläge betragen:

für 1 Karte	3 Groschen (dunkelblau)
für 1 Brief	6 Groschen (zinnberrot)
für 1 Paket	1 Schilling (violett)

Ankommende Post wird mit diesen Sätzen nachfrankiert, die Marken werden mit unserem sechseckigen Privatpoststempel entwertet.

Damit für die notleidende Postverwaltung ja keine Einnahmeverminderung eintritt, ist selbstverständlich jedes Poststück mit der amtlichen Postmarke zu versehen, da ja jedes Poststück im Tal von der Postverwaltung weiterbefördert wird.

Die Benützung unserer Privatpostzustellung durch die P. T. Gäste ist selbstverständlich eine freiwillige, da es jedermann freisteht, sich die Mehrgebühren zu ersparen, indem er seine Post in den Talpostämtern selbst aufgibt, bzw. von dort heraufholt.

Die abgehende Post wird täglich vom am Hause angebrachten Privat-Postkasten ausgehoben und weiterbefördert.

Angeschlossen an unsere Privat-Postablage sind folgende staatl. Betriebe:

**Wegmacherstation Katschberg Südschleife
Wegmacherstation Katschberg Nordschleife
staatl. Bauteilung der Katschbergstraße
sowie die Schneeflugstation auf dem Katschberg**

Weiters dient unsere Postablage auch für das neu errichtete **Berghaus Kareck**. Mit der Wiedereinführung einer staatl. Postverbindung bzw. Wiedererrichtung der staatl. Postablage Katschberghöhe wird unsere Privatpostverbindung automatisch eingestellt.

Katschberghöhe, 15. September 1948.

Josef Kastner

Innhaber Katschberghöhe, Kärnten



In this manner, the stamps enjoyed an additional function, one similar to that of postage due labels.

Little more was heard of the post until 1948 when a handbill appeared in a format similar to the original but bearing the name of the proprietor himself, one Josef Kastner. In this document it is stated, in German, that the private postal service would be resumed from 15 September, 1948, and would continue until the State postal service was re-established. As shown, the notice was embellished with copies of the actual stamps, in this case on toned paper, that were to be used and which showed no increase from the rates that had been charged before the war. They were 'cancelled' in purple using the hotel's original hexagonal handstamp whereon was indicated the hotel's elevation above mean sea level, apparently 1641 metres. However, in the bottom right-hand corner of my copy of this document, there is an additional handstamp in red which reads:

The stamps were of a common design and showed an altar on the mountainside. One printing was on toned paper and the other on white but which appeared first is a matter for conjecture. From the copies of each of the denominations of the printing on white paper and with yellow gum in my possession and from which I have provided an illustration of the 1-schilling value, it is apparent that they were printed in sheetlets of six. It is understood that the hotel's postal service also extended to the delivery of incoming mail. The various costs of handling such items were identical to those for outgoing post and, in fact, used the exact same stamps to indicate to the recipients just how much they owed.



“Eingestellt mit 1. Oktober 1948
infolge Wiedereinrichtung der staatlichen Postablage Katschberghöhe”

From this it may be seen that the Austrian State Postal service was about to be resumed giving the renascent hotel service a life span of little more than two weeks.



A closer look at MODERN STAMPS *Philately for Fun*

by Moira Bleazard, East Rand Philatelic Society



GAME, SET & MATCH AT WIMBLEDON

How many of you were glued to your television sets a few weeks ago, watching Roger Federer (Fig.1) in a magnificent win against Rafael Nadal in the Men's Finals at the Australian Open Tennis Championships? The French Open soon follows at the end of May, Wimbledon starts on the last Monday in June and the US Open takes place in late August/early September. So, with such a lot of tennis around, I thought a few stamps on the game would be most appropriate.



Fig.1. In 2007, Roger Federer became the first living Swiss person to be depicted on a Swiss stamp



Fig.2. Roland Garros with its clay surface



Fig.3. A Grand Slam bridge hand that has all 13 possible tricks 'in the bag'

Some interesting facts regarding these four tournaments – the Australian one is played at Melbourne Park, which has an acrylic hard court surface, as does Flushing Meadows in the US, while the Roland Garros court - named after the famous French aviator – is made of clay (Fig.2). Wimbledon, of course, is played on grass, which makes for a slippery ball that keeps low and skids or bounces erratically. Players thus have to reach the ball quicker than on other surfaces, which doesn't suit everyone's play. Not only are the surfaces different, but the weather takes its toll too – the heat in Melbourne made for a gruelling five hours of play in the Finals, while rain used to be a recurring problem at Wimbledon, with essential 'rest days' being cancelled, trying to make up for lost time. This was until a sliding roof was installed in 2009 at Centre Court.

To win all these four tournaments - 'The Majors' - in one season is regarded by the players as the 'Holy Grail' in tennis. Achieving this 'Grand Slam' takes its name from the game of Contract Bridge, where the partnership wins all possible thirteen tricks (Fig.3).

Tennis has been around since the Middle Ages. There are reports of a ball game, using the palm of one's hand, being played in monastic courtyards in northern France during the 12th Century. Later, leather gloves were donned and then, as ladies became interested in the game, a 'raquette' was developed in the 16th Century to protect their delicate hands (Fig.4). Of course the heavy wooden encumbrances strung



Fig.4. Perhaps the lady would prefer to play with a carbon-fibre 'raquette'

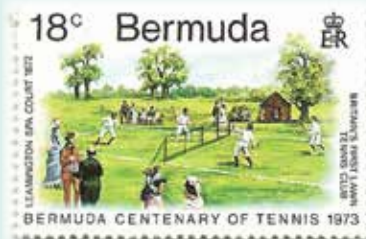


Fig 5. Leamington Spa – the world's first tennis club



Fig.6. Wimbledon postmark – 5 JUL 1979

built his own tennis court at Hampton Palace, which is still used today. Tennis thus became known as the Royal Game. The modern version of lawn tennis was developed by Major Walter Wingfield in 1873 and Leamington Spa was established as the world's first tennis club (Fig.5). The All England Croquet Club set aside one of its lawns at Wimbledon for tennis, which is regarded as the 'Mecca' of the game and HRH Prince Edward, the Duke of Kent is the current President of the All England Club.



Fig.7. Bjorn Borg in action

I lived in London during the late 1970s and was fortunate enough to be given a complimentary ticket (which by the way, cost £75!) to attend the men's semi-finals at Wimbledon. This was played on 5 July 1979 (Fig.6) between Bjorn Borg and Jimmy Connors on Centre Court. Borg wore a colourful headband to hold back his long blonde hair (Fig.7). Of course, pristine white is mandatory at Wimbledon, but some players do complain about the rules and try taking short-cuts with the dress code. Anyway, the game was truly riveting and was won by the cool Swede, who went on to take the memorable trophy in the Finals.



Fig.8. Holding the Ladies Silver Salver - Martina Navratilova

In addition to substantial prize money, the ladies champion wins a miniature replica of the sterling silver salver (Fig.8), while the men walk away with a replica of the large silver gilt cup, which has the following inscription: 'All England Lawn Tennis Club Single Handed Championship of the World' (Fig.9). I wonder what the Australians, Americans and French think about that claim! But Wimbledon is more than just the game of tennis. Walking from the Tube Station amongst the large crowd, beautiful weather

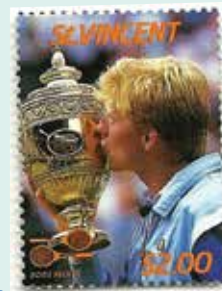


Fig.9. Boris Becker and the Men's Cup

South African Stamp Issues

by Robin Messenger, South African Stamp Study Circle



3 January 2017 – KRUGERRAND 50 YEAR ANNIVERSARY

Denomination: 3 x International Small Letter (R8.40)

Artwork: Rachel-Mari Ackermann, from images supplied by the South African Mint. Circular designs reproducing Krugerrands from 1967, 2000 & 2007, printed in gold foil.

Printer: Southern Colour Print, Dunedin, New Zealand

Process: Offset lithography

Stamp sizes: 48 x 44mm surrounding 38mm diameter circular stamp

Gum: PVA

Quantity: 42,370 sheetlets

Perforation: Gauge 14.2 extending through sheetlet margins and 14 around design

Cylinder numbers: 8500 (black)

Paper: Tullis Russell gummed stamp paper, 103gsm, phosphor coated

Printing sheet size: Not yet seen

First Day Cover: No. 8.103 of standard size, 190 x 102mm

Canceller: No. 8.92 – '03-01-2017 – ECO BOULEVARD', in gold

Acknowledgement:

This information is collated from the Philatelic Services email newsletter *WHAT'S NEWS*, together with personal observations.



GUESS THE STAMP

WHAT IS THIS?

The February issue stamp - 10c, 31/05/1961, Cape Town Castle Entrance from S.G. 206. Avi Barit guessed the this month's quiz. Thank you Avi - this issues winner and the first correct entry drawn

NOW GUESS WHAT THIS IS?

Try your hand at identifying this pixelated* image - Guess correctly - send your answer to the Editorial Board and you stand to WIN a stationery hamper!

*it's an image that is filtered so that the viewer sees the individual pixels that form the image, which is stylised, having reached the point at which no further detail can be resolved.

Send your answer to janice@gdb.co.za by 12th MAY 2017



Fig.10. It's not just about the tennis...

that day, the fashionable hats, eating strawberries and cream, celebrity gazing (Fig.10) - it was all so glamorous for an unsophisticated South African.

There are too many tennis greats who have starred at Wimbledon to be remembered in this article, so I'll only mention some who have been recently honoured on postage stamps - Pat Cash (Fig.11) and his compatriot Evonne Goolagong Cawley (Fig.12) have appeared on Australian Post, whilst Andy Murray (Fig.13) featured on Royal Mail. In 2013, Murray was the first British player to win at Wimbledon, since Fred Perry took the honour in 1936. Then there are the legendary Williams sisters - Venus and Serena - who have dominated the Wimbledon scene for so many years (Fig.14).

And finally, it's back to Roger Federer who has taken the Wimbledon title seven times thus far. The famous John McEnroe from the

1980s tennis circuit has called Federer "the greatest player of all time". So, can he make it eight wins in four months' time and does anyone have a spare complimentary ticket to Centre Court?

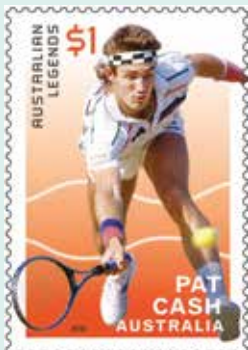


Fig.11. Pat Cash, 1987 Wimbledon champion



Fig.12. Evonne Goolagong Cawley, 1971 ladies champion



Fig.13. Andy Murray wowed patriotic British crowd in 2013



Fig.14. Venus & Serena Williams

Acknowledgments:

Postage stamps from Australia Post, Barbados, Bermuda, La Poste - France, Royal Mail, St. Vincent, Swiss Post & Uganda Post.

Information from Wikipedia and www.wimbledon.com



One of my Favourite Covers: 'INSIDE OUT'

by Volker Janssen, Fish Hoek Philatelic Society & Royal Philatelic Society of Cape Town

As much as we are all accustomed to covers with stamps, postmark and address on the front and sender's address and maybe another postmark on the rear..., there are a few exceptions where all that is different. Some covers have been used inside as well, for personal or philatelic reasons. Let me demonstrate what I mean with the following example:

Personal usage with additional message inside the envelope.

This unusual cover from the small German town of Hamm to Cape Town comes from the high inflation period in Germany in 1923. It was franked with 15 stamps of 200 Mark each and a total postage fee of 3000 Mark and cancelled on 04. August 1923 at the correct rate. Already a nice and genuine cover as it appears with inflation stamps front and rear.

However, when I looked inside the envelope I found not only a most beautiful flower design but also some astonishing text written in ink on the free space: At the top: "Have the dog's skin made into a floor rug" and at the bottom: "Teach Jock to escape from those perilous blind drivers who kill these innocent creatures."

This text message obviously refers to the famous dog of the well known novel *Jock of the Bushveld*. A most unusual cover.



front



back



SEISA RAMABODU STADIUM



MOOI UMGENI PIPELINE

Wilson Bayly Holmes - Ovcon Limited
 53 Andries street, Wynberg, Sandton
 P.O. Box 531 Bergvlei 2012, South Africa
 Tel: +27 11 321 7200 Fax: +27 11 887 4364
 (e) wbho@wbho.co.za (w) www.wbho.co.za

RELY ON OUR ABILITY



STAMP FAIRS:

All SAPDA run fairs feature 'mini-auctions'. Please note that only the Gauteng and Durban (Bluff) fairs are run by SAPDA - with associated SAPDA control over dealers, and non-SAPDA dealers who also trade within SAPDA rules. The other fairs are run independently by societies. SAPDA views these Fairs as a development and testing source for both new and collector growth.

Western Cape and the KZN Stamp Fairs are run independently.

• PRETORIA STAMP FAIR:

1st Saturday of every month; Denis Adami Hall, Wren St, Queenswood, Pretoria.
Contact: Paul van Zeyl on 076 124 9055.

• TSHWANE EXHIBITIONS:

1st Saturday of every month; Afrikaanse Filatelievereniging Pretoria. At the Denis Adami Hall, Wren Street, Queenswood, Pretoria.

• KYALAMI STAMP FAIR:

2nd Saturday of every month; 433 Maple Road, Kyalami. Contact Kenny Napier: 083 4440249 email> kenny.napier@mweb.co.za

Directions: From the N1: Take the R51 Allandale Rd turn off, drive 4.5km along Allandale Rd towards the Kyalami Race Track (west). At the Race Track turn right on the R55 Kyalami Main Rd - drive 1.6km north to the M71 road to Bryanston. Turn left on to the M71 and drive 2km to Maple Rd. Turn right into Maple Road and drive 1km to the Kyalami Country Club entrance on the right.

• EAST RAND STAMP FAIR:

Last Saturday of all months, except December; at **Edenvale Bowling Club**, located at 6th Ave / 11th Street, Edenvale. Contact Kenny Napier: 083 4440249 email> kenny.napier@mweb.co.za

• KZN STAMP FAIR:

Last Sunday of all months, except December. Kloof Country Club, Victory Rd (off Abrey Rd), Kloof. Contact: Beverley McNaught-Davis 031 904 1522, 081 270 2873, email: mcnd@telkomsa.net

• BLUFF STAMP FAIR:

1st Saturday of the month at the N.G. Church Hall, Lighthouse Road, Bluff, Durban, from 08h00 to 13h00. Contact: John Bracey Tel: 031 266 1020 Cell: 079 465 7468 email: bracon@eastcoast.co.za

• DURBANVILLE STAMP FAIR:

Venue: D.R. Church Hall Durbanville - Bergsig, corner of Boland Way & Protea Way. Directions & map available on request. Contact: Ken Joseph or Robert Harm. cell: 028 840 2160 or 072 597 1287.

As usual, a number of dealers are in attendance to sell, buy, evaluate and advise on all aspects of philately, including stamps, envelopes, covers, post cards, correspondences, postal history, revenues, documents & non-fiction books of a historical nature, etc. **Meeting dates for 2017:** 6 May, 17 Jun (auction day), 1 Jul, 12 Aug, 2 Sept (auction day), 7 Oct, 4 Nov, 2 Dec (auction day). (Note: All on the 1st Saturday of the month except 17th June - 3rd Saturday & 12th Aug - 2nd Saturday.) If you have material for auction, bring it to the Stamp Fair and please mark it clearly with your details.



WITWATERSRAND
PHILATELIC SOCIETY
P O BOX 4156 HARRINGTON 2107

Venue: Country Club Johannesburg, Napier St, Auckland Park. For info-contact the President: Herbie Schaffler RDPSA 082 722 7604.

Dates for Society Meetings 2017 always on a Wednesday at 20h00

- 12 April First Competitive Evening
- 10 May Modern Philatelic Exhibits
- 14 June Grand Challenge Match
- 12 July Open Class Exhibit Evening
- 9 August One Frame Evening
- 13 September Annual Auction
- 11 October Favourite Cover/s
- 8 November Second Competitive Evening
- 6 December President's Evening and Cocktail Party

EUROCIRCLE STAMP STUDY

For 2017 in Bishops at Woodmead. The second meeting of each month, except December, is held on the last Wednesday of the month. This is effectively a study group.

EDENVALE PHILATELIC SOCIETY

Meets first Saturday of every month at the Thornhill Manor Retirement Village Hall, Modderfontein at 1pm. Meetings consist of club competitions, workshops, themed events and many other fun activities. Membership is varied and mainly consists of general stamp collectors. Light refreshments are served. All are welcome - from the novice to more advanced collectors.

Our Facebook page allows club activities to continue 24/7 - search for Edenvale Philatelic Society - all welcome to join. Contact: Colin Bousfield 082 309 8656

PHILATELIC SOCIETY OF JOHANNESBURG



President: Clive Carr, Tel. 011 789 6357. Meetings: 19h30, Third Wednesday of the month, at Blairgowrie Recreation Centre, Park Lane, Blairgowrie. Exhibit programme for 2017:

- April 19 : Anything relating in any way to letters G & H
 - May 17 : British Commonwealth.
 - May 31 : 5th Wed using MS PowerPoint & Social media
 - June 21 : Mini Exhibits, 1 to 16 pages
 - July 19 : Foreign
 - Aug 16 : Southern Africa
 - Aug 30 : 5th Wed - Society auction
 - Sep 20 : Preview of National Exhibits, World at war and back of the book
 - Oct 18 : My favourite (Maximum of 1 frame) and thematic exhibits
 - Nov 15: Intersociety quiz, invited exhibits and end of year function
 - Nov 29: 5th Wed. Festive Function
- Postal address - P O Box 131037, Bryanston 2021, South Africa.

EAST RAND PHILATELIC SOCIETY

VENUE: The Victorian Secret, corner Russel/ Woburn St, Benoni; last Saturday of each month, at 2:00pm. Contact: Jimmy Mitchell via email; jimmy.hcmitchell@gmail.com

SANDTON PHILATELIC SOCIETY

Meets on the first Monday of the month (Feb to Dec) Venue: Blairgowrie Recreation Centre, Park Lane (off Susman Avenue), Blairgowrie. Time: 7:30 for 8:00 PM. The society has an active exchange packet circuit and has members with a wide range of philatelic interests. Visitors are welcome. For further information contact: Chris Carey : 083 6622150 / 011 6732229 / ccarey@icon.co.za

WEST RAND PHILATELIC SOCIETY

P.O.Box 198 Florida Hills 1716. Contact: Andries Nel, 083 269 9374 (Chairman) or Ian Walker (Secretary). Tel: 011 4721161 email: iwalker@vodamail.co.za Meet on the 3rd Wednesday of every month at 19H30 at Panorama Sports Grounds, Cornelius Street, Weltevreden Park.

PRETORIA, MPUMALANGA, LIMPOPO

PRETORIA PHILATELIC SOCIETY

Meets at 7:30pm on the first Monday evening of the month at Statech Centre, St. Alban's College, Clearwater Street, Lynnwood Glen.

- Mike Dove (President) 012 348 9393
 - Alex Visser (Deputy President & Secretary) 082 922 2927
- Monthly newsletter. Specialists on traditional philately, postmarks and postal history.

AFRIKAANSE FILATELIEVERENIGING VAN PRETORIA

Vergader elke 3de Saterdag van die maand by Glen Carpendale se Seëlwinkel in Kilnerpark @ 10:00. Klein maar baie aktiewe en produktiewe groepie lede wat gereeld bywoon; konsentreer veral ook op tematiere en oop versamelings. Nuusbrieff 'Die Posduif' verskyn elke maand.

POLOKWANE PHILATELIC SOCIETY

Meets every last Tuesday of the month, Contact: Peter Gutsche, PO Box 11933, Bendor Park 0713. Tel 083 276 1124. email: pmgutsche@mweb.co.za.

CENTURION STAMP CLUB

This society is for the 'morning glories' who do not wish to travel at night. Meetings on 2nd Friday of every even month (April, June, August, October etc) at the Dutch Reformed Church, Wierdapark South, Centurion. Concentrates on African countries, and a letter of the alphabet just for fun (one-page).

THEMATICS SA PRETORIA CHAPTER

Meeting 1st Saturday of each month at the Adami Stamp Fair @ 10:15. Vibrant & active group of attendees - loads of expertise amongst them.

Smalls

'Small' advertisements are accepted from Federation affiliated members at no charge. Ads can be inserted for two consecutive issues. Maximum 30 words. Material must be typed or printed for clarity, and the home society of the advertiser indicated. (Not necessarily for publication). Dealers and non-affiliated advertisers will be charged for classified advertisements at the rate of R50 per column cm per issue. Copy should be sent timeously - see page 40 box for deadlines and addresses. In all instances insertions will be at the discretion of the Committee.

WANTED: A Belgian philatelist is looking for used stamps from South Africa, willing to exchange stamps from Belgium, France, Switzerland, Luxembourg, Spain, Italy, ... other countries in Europe, Canada, Australia. Contact Guy Barbé via email: guybarbe@yahoo.fr

EXCHANGE: Italian/Canadian collector, including exchanges FD covers SA used stamps. Contact: Vittorio Zanoncelli. 20 St Marks Road, Southernwood, East London, 5201 Zanoncelli@telkomsa.net

LOCAL EVENTS & SOCIETY NEWS

Exhibition news invited for all future local events

BELLVILLE PHILATELIC SOCIETY

Monthly meeting, 2nd Wednesday. Auditorium of the Bellville Library, Charl van Aswegen Road, Bellville. Meetings start at 19h00 to 21h00. Meetings consists of club cup competitions, workshops and fun evenings where specific themes selected for the evening. Members from other societies are regularly invited. *Chairperson:* Wobbe Vegter; 072 425 6301; wvegter@xsinet.co.za *Secretary:* Reanie de Villiers; 082 567 0353; philately@netpoint.co.za
website: <http://bellvillephilatelic.tripod.com>
Contact the Secretary for Programme details.

THE ROYAL PHILATELIC SOCIETY OF CAPE TOWN

Meetings are held every 2nd and 4th Monday of the month at 8.00pm at the Athenaeum, Camp Ground Road, Newlands. Visitors are always welcome. *Contacts:* Mary Rogers 0729461767 or 021 5582662. Andrew McLaren 0737542856. 021 6844361 (work).

STELLENBOSCH FILATELISTEVERENIGING

Meeting – 1st Tuesday of the month at 19:00.
Plek: Biblioteek, La Clémence afree-oord, Webersvalleiweg/Road, Stellenbosch. Ons hou uitstallings, ontvang gassprekers, ervaar praatjies/demonstrasies, monthly newsletters with news on local philatelic activities, Show, Tell and Ask sessions covering all aspects of the hobby of stamp collecting.
Besoekers altyd welkom.
Visitors always welcome.
Join us. Kom saam of kontak
robharm@mweb.co.za



PAARLSE FILATELISTE Sedert 1951



Die Paarlse Filateliste vergader elke maand op die tweede Donderdag van die maand om 19h30. *Filatelite, seëlversamelaars en besoekers is baie welkom. Vergaderings is baie informeel en daar word lekker gekuier en daar is altyd iets te leer (en te ete). Vir meer inligting oor die program en vergaderplek kontak gerus vir:* Gawie Hugo: 083 956 2410 gawiehugo@gmail.com of Riaan Crafford: 022 4824005 n/u craffies@telkomsa.net

FISH HOEK PHILATELIC SOCIETY

Founded in 1954 and still promoting philately in the 'Deep South' of the Cape Peninsula. Circa 20 – 30 members and often a few guests gather once a month. FHPS reaches a wider audience on the internet since launching their website. Please have a look and maybe get ideas or inspiration for your own society. The society meets every 1st Tuesday at 19h30 at Civic Centre, Minor Hall, Recreation Road, Fish Hoek. *President:* Brian Franklin email:info.fhps@info. *Secretary:* Volker Janssen. *Website:* www.fhps.info FHPS



DE POSBOOM FILATELIE VERENIGING

Tweede Maandag van elke maand om 7m Posbus10647. Danabaai. 6510.
Jaarlikse Algemene Vergadering: November.



President: Jack Visser 082 332 5353.
Tel / Faks: 044 6903030
epos: jackvisser@telkomsa.net
Sekretaresse: Gerrie Conradie 082 952 6700
Tel / Faks 044 6981074.
epos: gajcon@gmail.com

PORT ELIZABETH PHILATELIC SOCIETY

President: Francois Friend. Cell: 082 554 8900 francois@softchem.co.za
• Dave Brown (*Vice President*). 041 360 4025.
• Rodney Maclachlan (*Secretary Treasurer*) 072 619 5409. P.O Box 15558, Emerald Hill 6011
Society meets at Bible Society House
31 Cotswold Ave, Cotswold.
MEETINGS always on Monday evenings:
starting time for monthly meetings 19h00
2017 meeting dates:
8 May, 5 June, 3 July, 7 Aug, 4 Sept,
2 Oct, (Venue not available 6/11/17)
30 October, 4 December.



EAST LONDON PHILATELIC SOCIETY

Meetings: 4th Thursday of the month at 19h30. Berea Gardens, The Heritage Hall, 70 Jarvis Rd. Berea East. *Contact:* Dave McWilliams: 043 748 1378, Cell 082 898 7082.
email davehmcwil@lantic.net
Secretary: J.Muller. Tel 043 721 0327.

MASHONALAND PHILATELIC SOCIETY HARARE ZIMBABWE

Meetings - 9am, 3rd Saturday monthly at the Orchid Society Hall, Mukuvisi Woodlands, Hillside Road (off Glenara Avenue South), Harare. Stamp displays, talks, advice, auctions, swapping and socialising. *Contact:* Mike Fox, tallyho@mango.zw landline 495408; cellphone 0772 376994

OFS PHILATELIC SOCIETY

The Society meets every fourth Friday of the month, (except December), at 19h15 at the museum of the Boer Republics in Memorium Road, Bloemfontein.

HIBISCUS COAST PHILATELIC SOCIETY

Louise Oswin Residence, 1 Beach road Southport 4230. PO Box 228. Anerley 4230. *Meetings:* 3rd Saturday of the month at 14h00. *Contact:* Noel Lavery: 039 695 1642, Cell 082 440 5501. email noel@accessweb.co.za *Secretary:* Louise Oswin. Tel 039 681 3265 cell 079 505 6044 email: oswin@telehost.co.za

Specialist Societies

EUROCIRCLE STAMP STUDY

Meetings in the Captain's Table at Woodmead - last Wednesday of each month at 20h00 (except December). 2017 Dates: 26 April, 31 May, 28 June, 26 July, 30 August, 27 Sep, 25 October, 29 November.

TBVC STUDY GROUP

Contact: *Chairperson:* Jan de Jong. 011 839 2031 djhome@iburst.co.za. *Secretary:* Eugene du Plooy; editor of the Newsletters TBA. Meeting 1st Saturday of the month at 09:15am at the Adami Stamp Fair in Pretoria. email: eugene@umalusi.org.za PO Box 8727, Centurion 0046.

RSA SEËLSTUDIEGROEP

Vergader elke 2^{de} Woensdag van elke onewe maand (Januarie, Maart, Mei, Julie ens) by Filateliedienste in Silverton. Doen uitstekende studie en navorsing en publiseer 'n gereelde maandelikse nuusbrief, 10vm.

SOUTH AFRICAN STAMP STUDY CIRCLE

Meetings: First Saturday of month at 13h00 at the Thornhill Manor Retirement Village Hall, Modderfontein. *Contact:* Secretary, Keith Perrow 083 379 2626, email: keith.perrow232@gmail.com

THE PHILATELIC SOCIETY OF KWA-ZULU NATAL

Meetings are now held at the Classic Motorcycle Club, 137 Tara Road, Bluff, Durban at 10h00 on the 2nd Saturday of the month.

Contacts: Ted Brown (*President*) 083 284 6554 Zbigniew Kawecki (*Vice-President*) 082 968 6888 Email zeptepi@3i.co.za Trevor Harris (*Secretary*) 082 377 8465 Kraft von Aulock (*Treasurer*) 031 2629162
'Stamp Exhibitions' with a theme of what to do and what not to do to achieve success...
All are welcome!



HIGHWAY PHILATELIC SOCIETY

HPS, Durban, Meets at the German Club, Barnham Road, off Essex Terrace, Westville. 09h00 – 11h30 every second Saturday of the month. Open invitation to other Philatelic Societies and interested visitors. Youth encouraged to attend. 'Theme' Exhibits & Frames by Members, Instructive Talks and general networking. Free entrance and teas/coffees available. Safe parking. German Restaurant open for lunch. The Committee encourages past and new visitors /youth to come and get involved in this wonderful social hobby.
President: Ian McMurray. ianjarvismcm@gmail.com
Secretary: Bev Chittenden, bev@natalaircon.co.za
Membership: Barry Livsey, livsey@netsolutions.co.za
Bev McNaught-Davis, telephone: 031 904-1522 or 081 270-2873.



Established in 1924

MARITZBURG PHILATELIC SOCIETY

The Club meets on the third Monday of every month at 16h00. The venue is St Mathews Parish Hall, 115 Hesketh Drive, Hayfields, Pietermaritzburg
The Thematics Group meets on the first Saturday of every month at 09h00. Venue: 'Bumcree' 26 Maud Avenue, Scottsville. *The Executive Committee* meets on the first Saturday of every month at 11h00. Venue: 'Bumcree' 26 Maud Avenue, Scottsville
President: Fred Handman. 033 239 5684. email: fredhm@iafrica.com 083 661 4210.
Treasurer: Heather Wyllie.
Secretary: Aubrey Bowles. 082 558 0283. email: burncree45@telkomsa.net

Publicity and Monthly Newsletter, information on Society activities can be obtained from Aubrey Bowles.

- Membership Secretary - Ron Buchel
- Circuit Book Manager - Gordon Bennett
- Club Competitions and Speakers - Tony Evans
- Catering Officer - Val De Jager
- Library Assistant - Joyce Hulse
- New Members - Julia Evans
- New Stamp Issues - Mike O'Connor
- Liaison Officer - Dave Wyllie
- Librarian (Ad Hoc Committee Member) - Graham Bruce

International Philatelic Events

30 March - 2 April 2017
MELBOURNE 2017

FIAP International
Stamp Exhibition
Commissioner: Andrew Fischer





Doreen Royan & Associates (Pty) Ltd

Fine Postage Stamps (Established 1982)

P. O. Box 98885 Sloane Park 2152 Johannesburg South Africa
Tel: + 27 11 706 1920 Fax: + 27 11 706 1962



RHODESIA 1966

Queen Elizabeth II 'Greater Kudu'. 3d. chocolate and pale blue.

Right marginal, vertical strip of four.

Variety, top two stamps with pale blue background completely omitted.

Superb unmounted mint condition.

British Philatelic Association Certificate No. 84,559 (2014). Quantity: 30 mint. SG 376b.

Outstanding and Exceptionally Rare.

Website: www.doreenroyan.com

Email: royan@icon.co.za





SPINK

LONDON
1666

THE PHILATELIC COLLECTOR'S SERIES SALE FEATURING OUTSTANDING SOUTH AND SOUTH WEST AFRICA FORMED BY FREDDIE HERZBERG OF NAMIBIA 20 - 21 APRIL 2017 | LONDON



For more information contact David Parsons or Ian Shapiro:
Tel: +44 020 7563 4072 | Fax: +44 020 7563 4085 | Email: dparsons@spink.com
Tel: +44 020 7563 4000 | Fax: +44 020 7563 4085 | Email: is Shapiro@spink.com
69 Southampton Row | Bloomsbury | London | WC1B 4ET



#SPINK_AUCTIONS WWW.SPINK.COM