

JOHANNESBURG FIRST 50 YEARS – FROM SHANTY TOWN TO WORLD CITY

By the middle of the nineteenth century gold fever was running high in many parts of the world. This eagerness also spread to the **Zuid Afrikaan Repuliek (ZAR)**.

Apart from other areas in the ZAR, alluvial gold deposits were found on the **Witwatersrand**.

Before the discovery of gold, the Witwatersrand (White Water Ridge) was a farming community that was pastoral and self-sufficient with 401 burghers.

After the discovery of **gold** in 1886 on the Central Witwatersrand, **JOHANNESBURG** would emerge as the centre of the Witwatersrand and grew to the biggest and richest city in South Africa within years.

“Witwatersrand” has no relation to foaming white water as the name suggest, but it was inspired by the bleach limestone which sparkled in the sun next to fountains and flowing streams.

The Witwatersrand plateau forms a continental divide of South Africa with the run-off to the North draining into the Indian Ocean via the Crocodile and Limpopo Rivers. The run-off to the South drains via the Vaal River into the Orange River and ultimately into the Atlantic Ocean.

AIM

This exhibit intends to deal with the **first 50 years** of Johannesburg, from birth to the hosting of the world-renowned Empire Exhibition during its Jubilee year in 1936.

Selected Highlights

- 1888 Witwatersrand handstamp
- 1886 Original “Staats-Courant”
- 1889 Written certificate by mine commissioner Jan Eloff
- 1889 Duty receipt
- 1898 Title deed transfer
- 1894 Claims title deed,
- 1890’s Share certificate
- 1896 Industrial Exhibition wrapper
- 1913 Original print showing photos of the 1913 strike
- 1922 Strike - original photo
- 1936 Johannesburg Golden Jubilee Souvenir
- 1936 Schlesinger Air Race cover
- 1936 JIPEX Catalogue



Reputedly the first house built in Johannesburg – Standard bank occupied the room on left

SCOPE

The growth and expansion of the Witwatersrand and Johannesburg promoted a distinct degree of the **growth** of South Africa. Its gold has exercised an unthinking predominating influence in shaping the history of South Africa.

The Johannesburg **Empire Exhibition** was the first of its kind to be held outside the United Kingdom and one of the prime events hosted by South Africa in its history. It attracted numbers of interested visitors from overseas, who experienced the wealth of South Africa's natural resources and culture.

In conjunction with the Empire Exhibition, the Johannesburg International Philatelic Exhibition (**JIPEX**), organized by the Philatelic Society of Johannesburg, took place from 2 to 14 November 1936.

The philatelic outfall was substantial. Lots of much sought after collectable items were made available

BIBLIOGRAPHY

- Die Verhaal van Johannesburg*: John R Shorten, 1970 – pp 55 to 370
- Fifty Golden Years of the Rand 1886 - 1936*: D Jacobsson, 1936 – pp 86 - 100, 141 - 3, 161 - 187
- Johannesburg 1886 – 1899 Origins and early management*: M S Appelgryn, 1985 – pp 1 - 128
- SA Philatelist*: February 1937 – pp 20 - 2; March 1937 - pp 39 - 42; April 2016 – pp 65 - 7
- The Stamps of the Union of South Africa 1910 – 1961: Handbook catalogue 1986*: SJ Hagger – pp 151, 161 - 2
- The Special and Commemorative Postmarks, Cachets and Covers of South Africa 1882 - 1975*: 1979 2nd Edition: Hasso O Reisener – pp 35-6

TIMELINE

Frame 1

- pp 1: Introduction
- pp 2 - 3: Pursuing the Main Reef
- pp 4: Central Witwatersrand
- pp 5: Government Actions
- pp 6 - 7: Birth of a City
- pp 8: Mining the Gold

Frame 2

- pp 9 - 11: Mining the Gold
- pp 12: Land Ownership
- pp 13: Johannesburg Stock Exchange
- pp 14 - 15: Living Conditions
- pp 16: Public Health

Frame 3

- pp 17 - 19: Transport
- pp 20 - 22: Postal Service
- pp 23: “Uitlander” Franchise
- pp 24: Braamfontein Disaster

Frame 4

- pp 25 - 26: Anglo Boer War
- pp 27 - 30: Under British Rule
- pp 31: Union of South Africa
- pp 32: Native Tax

Frame 5

- pp 33: Labour Issues – 1913
- pp 34: World War 1/Boer Rebellion
- pp 35 - 36: Labour Issues - 1922 Strike
- pp 37: “The New Johannesburg”
- pp 38 - 39: Empire Exhibition
- pp 40: JIPEX



Early Johannesburg Postal cancellations – L t R: Triangle Town Cancel. No 3 is associated with Johannesburg (circa 1889); Feb 1891; July 1893

MATERIAL

The exhibit is planned chronologically but, in some instances, material is grouped together to keep to the story line without detracting.

Philatelic as well as non-philatelic material has been chosen to best fit the story, to enhance the exhibit and to appeal to the eye.

The overall impression between philatelic and non-philatelic material is well-balanced.

Scarce items are matted with orange borders

SEARCHING FOR GOLD

As early as 1806 Sir John Barrow indicated that gold is to be found near the central Witwatersrand or the nearby Magalies Mountains

Sporadic prospecting had been done on the Witwatersrand. Several **insignificant** finds of gold were made by various prospectors.

In October 1853, **alluvial** gold was discovered by Pieter Jacob Marais in the Jukskei River North of the Witwatersrand. On 6 December 1853 Marais was appointed by the ZAR Government as the first official prospector

He concentrated on river beds, succeeded discovering small quantities of gold.

His successes lead many prospectors to concentrate on river beds and little streams north of the main reef up to the 1870's

Inferior quartz gold was discovered about 90 km west of Johannesburg in the early 1870's. It attracted some interest in the Witwatersrand, but the main attention was focused on Barberton about 400 km North.

During 1885, Stephanus Minnaar discovered **payable gold** on the farm **Kromdraai**, North West of Krugersdorp. This discovery **aroused** much interest in the Witwatersrand and attracted other gold hunters from all over the world



Alluvial gold was found in the Jukskei River north of the Witwatersrand long before the Main Reef was discovered. The man credited with this find in October 1853 is Pieter Jacob Marais.

PURSuing THE MAIN REEF

The findings at **Kromdraai** North East of Johannesburg, near Krugersdorp, formed the focus of the diggers and were the cause of the first Witwatersrand gold rush. 51 Diggers petitioned the Government in August 1885 to declare Kromdraai public diggings

The diggers' request was granted and on 8 December 1885 Kromdraai was declared the **first public diggings** on the Witwatersrand

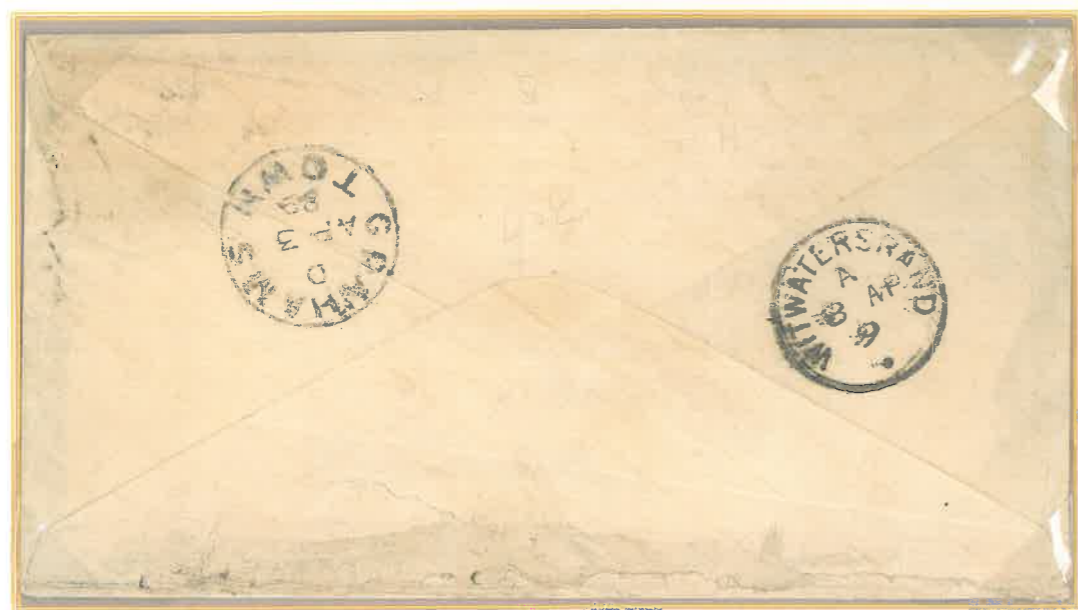
Tents and shacks emerged on the open plains as diggers arrived in pursuit of their fortunes



Old-time prospector at work in the Transvaal

Source Gold! Gold! Gold! 1970

This cover from Bowden (front not shown), COGH is addressed to Johannesburg, South Africa on 2 April 1889.



Back stamped with **rare Witwatersrand handstamp** dated 8 April 1889

The **first discovery** of real importance on the Witwatersrand was made by Frederik (Fred) Struben and his brother Hendrik (Harry). The Strubens were engaged in prospecting on a large scale since 1883 and are widely recognized for their discoveries and prospecting on the reef

On 18 September 1884, they found a rich quartz reef on the farm Wilgespruit South East of Kromdraai, near Krugersdorp. They called it "**Confidence reef**", the production was most encouraging, and they erected the first stamp battery on the Witwatersrand

On 22 February 1886, 61 ounces of gold were delivered to the Standard Bank in Pretoria. Although promising, it was quartz gold and the Confidence reef was worked out within a year. Convinced that they didn't found a major deposit, Harry secured permission to prospect on the farm Braamfontein

The confidence reef did serve one important purpose: *it confirmed the belief that there was a rich reef somewhere on the Witwatersrand*

J G Bantjies bought the mineral rights of Kromdraai and together with three others formed the **first** gold mining syndicate in 1882

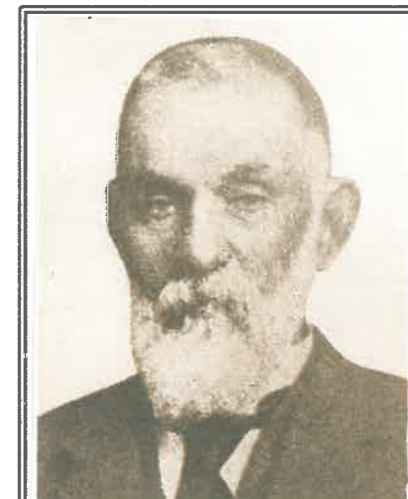
It eventually was worked out and disappointed the high expectations of the diggers Kromdraai's gold formation was **quartzite**

The Witwatersrand's gold occurred in gold bearing beds of sand, gravel and boulders that have plainly been washed down from higher ground

The Rand was still guarding its great secret – the occurrence of gold in the so called *banket* or **conglomerate** beds

Although conglomerate layers were seen and hinted by some, it was not exploited

Bantjies made an early reference in March 1881 mentioning a peculiar formation he founded and panned on Vlakfontein and Vogelfontein farms stating: *'It is my belief that these rocks will ultimately prove to be rich in gold - if only I can strike it on Kromdraai, I shall not worry about prospecting anywhere else...'*



Jan Gerritse Bantjies who discovered the Main Reef at Vogelstruisfontein, at about the same time as George Harrison found it on the farm Langlaagte.

Source Johannesburg One Hundred Years, 1986

In their quest for gold, many prospectors passed the uninviting Witwatersrand without much success

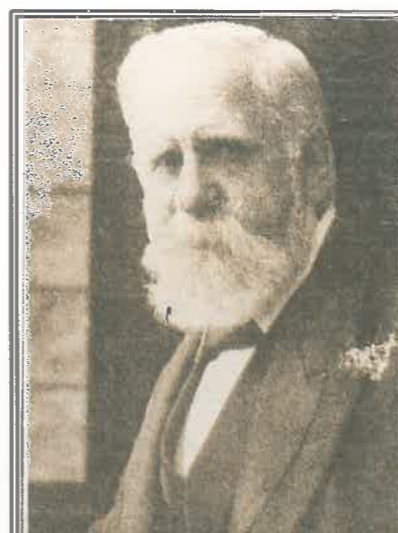
Several insignificant finds of gold were made by various prospectors

These finds originated from alluvial deposits or quartz ore

The misfortune of the early gold diggers was that the gold occurred in a geological setting unknown to them

Whilst they were concentrating and investigating quartz reefs – ordinary quartz flecked with gold – the real wealth was in gold bearing conglomerate beds

Conglomerate layers consist of quartz silica pebbles held together by silicate cement



The first discovery of 'payable gold' (quartz gold) on the Witwatersrand was made in March 1884 by the Struben brothers, Hendrik and Frederick, who dubbed their discovery Confidence Reef and sent samples of the gold to President Paul Kruger.

Source Johannesburg One Hundred Years, 1986



Piece of ore from the Witwatersrand reef

The world fame of the Witwatersrand has led to worldwide adoption of the term "banket" to describe gold bearing conglomerates

It remained in use until today

Confusion exist about the authentic discoverer of the **main reef**

Early 1886 an Australian, George Harrison, arrived at **Langlaagte** farm, owned by Gert C. Oosthuizen

He obtained permission to prospect for gold and discovered the main reef in March 1886

Legend has it that he and an assistant, George Walker, was strolling on the farm one Sunday in February 1886 when he kicked against a stone

He picked it up and saw a dull glint here and there, almost like a sly wink...

Harrison is generally accepted and regarded as the first to find the main reef at Langlaagte

PURSuing THE MAIN REEF

The discovery of the main reef aroused much interest in the Witwatersrand and attracted other **gold hunters** from all over the world. Men arrived on the Rand, eager to share in the opening of the goldfield. Stands were chosen according their needs and happened at random in a haphazard way. In practice, this stand was used to park an **ox-wagon** and pitch a tent

The ox wagon played an important role in the development and history of Johannesburg. The diggers relied on **ox wagon**, horseback, mule cart, bicycles or even by foot for **transport** and transportation. For the first 7 years of its existence everything, from industrial equipment to even food stuffs, were brought in by ox wagon from rail heads some 500 km away to Johannesburg



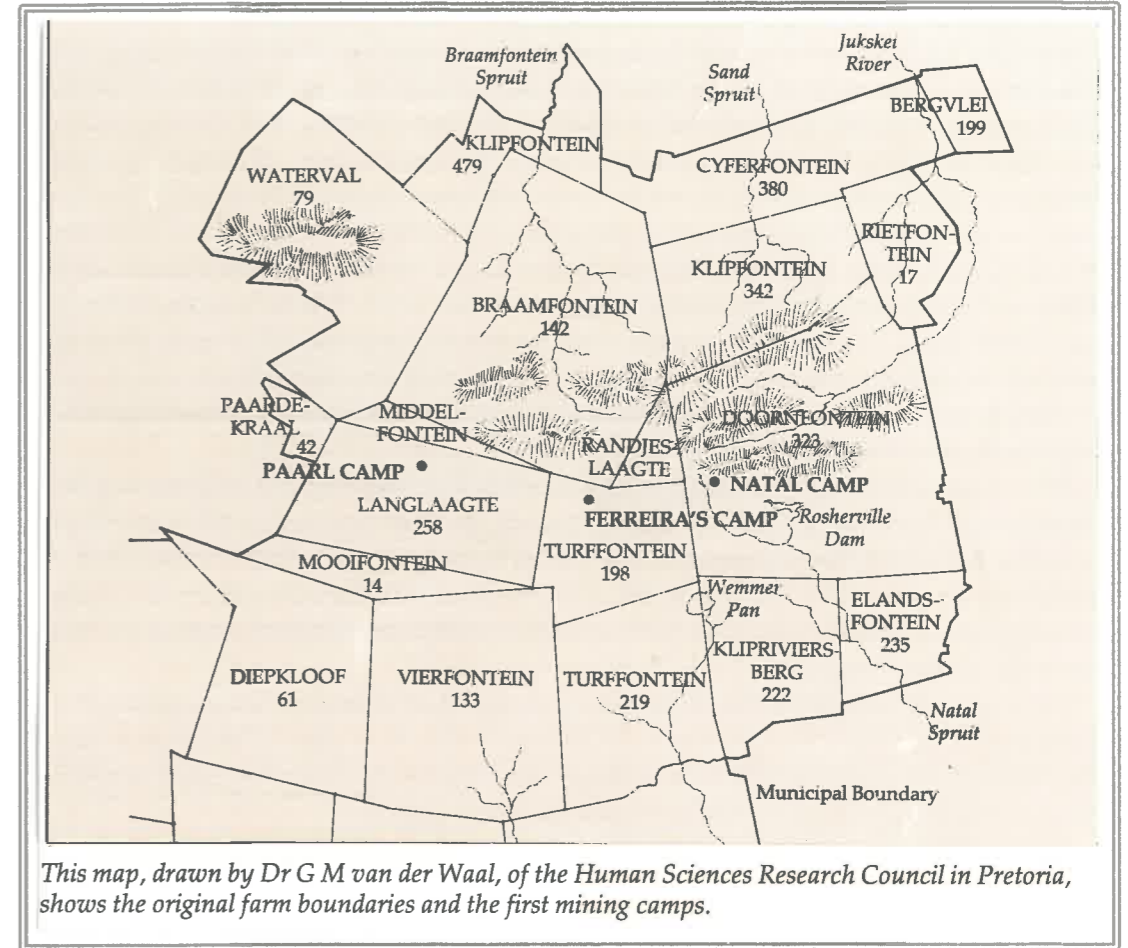
Pair showing **variety** Numerous dots in lower portion of stamp ex Row 19/2



Pair showing **variety** Spots in and around value circles and lower portion of stamps ex Row 20/1 and 2

Definitive stamps issued during December 1932
The design, depicting an ox wagon crossing a drift, is momentous of the South African and Johannesburg's early history

The design featured in three definitive issues



This map, drawn by Dr G M van der Waal, of the Human Sciences Research Council in Pretoria, shows the original farm boundaries and the first mining camps.

Source: Johannesburg One Hundred years, 1985

There was no accommodation available and the gold seekers had to live in **wagons**, tents, shacks and hurriedly build shelters, suffering much hardship. Fuel was scarce because of the treeless veld and water had to be brought from springs or streams a distance away

Camp dwellers was forced to make the best provision they could for food supplies. They gathered together in various settlements, sited according to the availability of water and soon **"camps"** started to grow quickly on the bare veld



The founder and undisputed leader of Ferreira's Camp — Colonel Ignatius Philip Ferreira who later became a member of the first Diggers Committee.

One of the first comers on the field was Colonel Ignatius P Ferreira who parked his wagon on the farm Turffontein

Soon new arrivals followed, unhitching their wagons around him, accepting his leadership

By September 1886 there were 400 people in the settlement that has become known as "Ferreira's camp"

Camps started to grow of which the three main ones were:

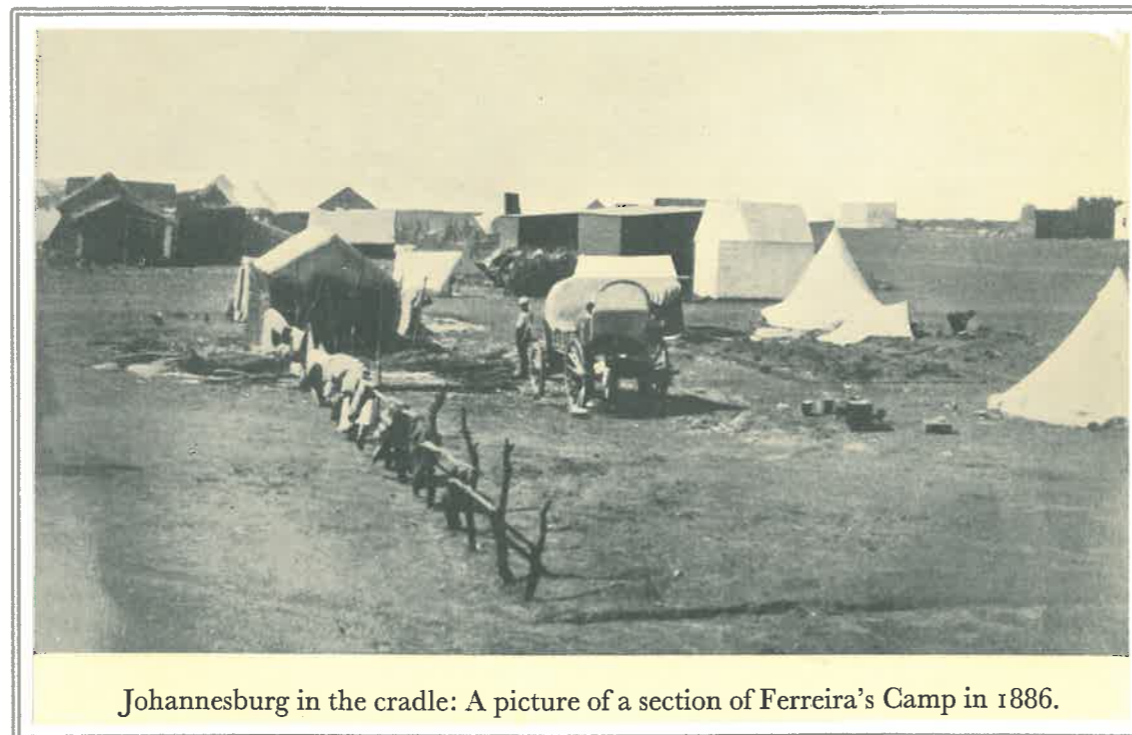
Ferreira's Camp was the most popular and biggest of the Camps

Meyer's Camp on the farm Doornfontein

Many of the diggers were from Natal and it was renamed Natal camp

Langlaagte Camp on the farm Langlaagte

Also known as Paarl or Afrikaner Camp due to the many Afrikaners who settled there from Paarl in the Cape Colony



Johannesburg in the cradle: A picture of a section of Ferreira's Camp in 1886.

Although the town was not laid out on any of these camps, the inhabitants of these camps constituted the nucleus of future Johannesburg's population

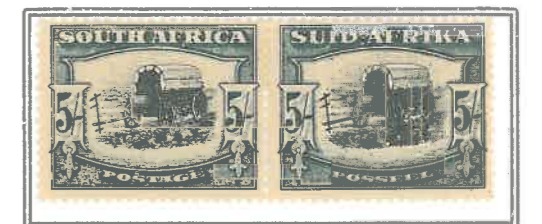
Life in the camps were simple and primitive and soon the traders followed. A B Edgson set up the first general store and Post Office in a wood and iron structure

Mrs. Minnaar opened the first boarding house with a **wagon** and a tent followed by a butchery, bakery, blacksmith and canteens

Definitive stamps issued in October 1933 with a lifespan of 21 years
Design depict an outspanned ox wagon and featured in three definitive issues



Pair showing **variety** Green spot below "L" of POSSEEL ex Row 19/5



Pair showing **variety** Broken yoke-pin ex Row 18/5
Black dot left of top yoke-pin and green spot right of POSSEEL - ex Row 18/6



Stamp of a native mail runner issued 9 October 1995 on World Post Dav

In these early days, native runners provided the only postal link with the outside world to and from Pretoria, Heidelberg and Potchefstroom

GOVERNMENT ACTIONS

The influx of diggers to the goldfields made it necessary for the Government to maintain authority of the State. Government decided to **proclaim** different farms on the Witwatersrand as **public diggings**

Extremely rare **original "Staats-Courant"** (Government Gazette) dated **8 September 1886** carrying the proclamation of the farm **Randjieslaagte**, on which Johannesburg was established

The Gold Law (Law 8 of 1885) required the appointment of a **mining commissioner** and clerks for the administration of the goldfields

On 27 August 1886, the ZAR Government decided to appoint officials at the goldfields of the Witwatersrand

Carl von Brandis from the state attorney's office was appointed as head of the first little group officials

He became the first mining commissioner on 20 September 1886 with Jan Eloff as his assistant



Carl von Brandis (Barnett Collection)

Source: Like It Was (1987)

During October 1886, Von Brandis issued 26 Hotel licenses, four bakers, five butchers and 4 shop licenses

He was appointed **special magistrate** on 4 November 1886

Later, both Commissioner and Von Brandis streets were named after him

Registered letter from Von Brandis Post Office Branch, Johannesburg to Salonika, Greece on 25 April 1935



Cancelled and registered with rare **Von Brandis, Johannesburg Post Office** date stamp and registration label

STAATS-COURANT.

ZUID - AFRIKAAN-

SCHE REPUBLIEK.



DEEL VI.

PRETORIA, Z. A. REPUBLIEK, WOENSDAG, 8 SEPTEMBER 1886.

No. 294.

PROCLAMATIE

VAN

ZHED. DEN STAATSPRESIDENT.

NADEMAAL aan de Regering der Zuid-Afrikaansche Republiek gebleken is, dat het wenschelijk is de plaatsen genaamd DRIEFONTEIN, ELANDSFONTEIN, Zuidelijkste gedeelte DOORNFONTEIN, TURFFONTEIN, Gouvernementsplaats RANTJESLAAGTE, LANGLAAGTE, PAARDEKRAAL, VOGELSTRUISFONTEIN en ROODEPOORT, allen gelegen in Witwatersrand, district Heidelberg, te verklaren tot een publieke delverij.

Zoo is het dat ik, STEPHANUS JOHANNES PAULUS KRUGER, Staatspresident der Zuid-Afrikaansche Republiek, met advies en consent van den Uitvoerenden Raad, in termen van art. 5 der gewijzigde Wet No. 8, 1885, de bovengenoemde gronden proclameer tot een PUBLIEKE DELVERIJ in de volgende volgorde en van af de volgende tijdstippen respectievelijk, te weten:—

De plaatsen DRIEFONTEIN en ELANDSFONTEIN, op Maandag 20 September 1886;

Het zuidelijkste gedeelte der plaats DOORNFONTEIN en de plaats TURFFONTEIN, op Maandag 27 September 1886;

Het stuk Gouvernementsgrond genaamd RANTJESLAAGTE en de plaats genaamd LANGLAAGTE, op Maandag 4 October 1886;

De plaatsen genaamd PAARDEKRAAL, VOGELSTRUISFONTEIN en ROODEPOORT, op Maandag 11 October 1886;

voor zoo verre niet door eigenaars of huurders afgebakend voor Mijnpachtbrieven of volgens de gewijzigde Wet No. 8, 1885, art. 20, uitgehouden voor bebouwde plekken, tuinen, landerijen en waterleidingen in de nabijheid daarvan.

GOD BEHOEDE LAND EN VOLK.

Gegeven onder mijne hand ten Gouvernementskantore te Pretoria, op heden den 8sten dag van de maand September A.D. 1886.

S. J. P. KRUGER,
Staatspresident.

No. 188. R4014/86
Gouvernements Kennisgeving.

TER algemeene informatie wordt het onderstaand besluit van den E. A. Volksraad hiermede gepubliceerd.

Op last,

W. EDUARD BOK,
Staatssecretaris.

Gouvernementskantoor,
Pretoria, 23 Augustus 1886.

Volksraadsbesluit art. 1415, l.d. 12 Augustus 1886.

De Raad besluit Wet No. 6 1888, nog voor een jaar in werking te stellen tot in de aanstaande gewone zitting van den Volksraad hierover nader beslist zal worden, als wanneer ook de Wet artikels gewijze in behandeling zal genomen worden met inachtneming van de volgende bepalingen:

1. De tot dusverre gekozen leden der Distriktsraden volgens art. 6 der Wet zullen aftreden op laatsten dag van December van dit jaar. De nieuw te kiezen Distriktsraden, waarvoor de Regering nieuwe electies zal uitschrijven, zullen in functie blijven van 1 Januari 1887 tot ulto. December 1889.

2. In plaats van het tegenwoordige art. 21 der Wet zal in het vervolg gelezen worden: "Twee leden maken met den Landdrosst een quorum uit."

No. 190. R5402/84
Gouvernements Kennisgeving.

AANGEZIEN het gebleken is, dat er onzekerheid bestaat omtrent de juiste scheidingslijn tusschen de wijken Seijlons en Olifantsrivier, in het district Middelburg, wordt hiermede ter algemeene informatie bekend gemaakt, dat gemelde lijn nu bepaald en vastgesteld is als volgt:—

"Van Stefanus Schutte, Klippan, op de lijn van Middelburg en Lijdenburg, met de grens tusschen Seijlonsrivier en Olifantsrivier, tot de plaats van C. du Plooi, Nooitgedacht; van daar met een rechte lijn tot de plaats van J. C. J. van Rensburg; van daar naar de gewezen plaats van A. Diqui, genaamd Nooitgedacht; van daar tot het bovenende van de Vetspadkloof; van daar tot de plaats van L. de Jager, Kranspoort, en met de spruit af tot aan Olifantsrivier."

Op last,

BIRTH OF A CITY

The proclamation was signed by President S J P Kruger on 8 September 1886, with **Randjieslaagte** proclaimed on 4 October 1886. This being the birth of **Johannesburg** on a Government piece of land. Before the proclamation, the goldfields resorted under the jurisdiction of the magisterial district of Heidelberg



Stamps of **Pres. Kruger** issued to celebrate Pretoria's centenary on 21 October 1955
Stamp on right shows **variety** Heavy green blob under "9" of 1955 - ex Row 5/20



Christiaan Johannes Joubert
Source: Johannesburg One Hundred years, 1985

In August 1886 the head of the Republican Mines Department, Christiaan Johannes Joubert and Johann Rissik, first clerk in the Surveyor-General's office, were dispatched to the Gold Fields. The discovery of gold and a suitable place for laying out a town was to be investigated

They recommended that public diggings be proclaimed and a township be laid out on the farm **Randjieslaagte**. This proclamation appeared in the "Staats-Courant" of 8 September 1886

The town that developed on Randjieslaagte was later to be named after them – **Johannesburg**

On 5 October 1886 Johann Rissik send a plan for the survey to J E De Villiers with the remark that the new town's name would be Johannesburg

Although there was no such formal recorded decision, the State Secretary affirmed this name on 9 October 1886 to the Mining Commissioner, Carl von Brandis



Johann Rissik
Source: Johannesburg One Hundred years, 1985

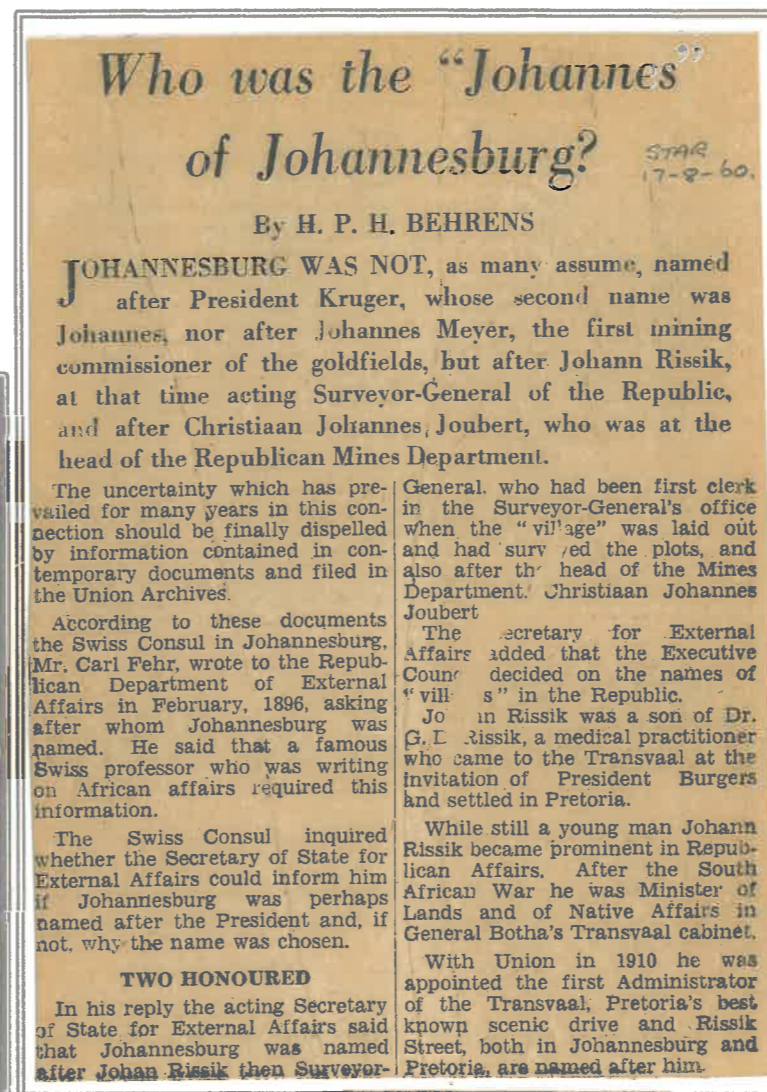
Johannesburg was not proclaimed as a town. The law at the time provided for proclamation only in cases of towns laid out on privately owned ground. The non-proclamation of Johannesburg caused much controversy about the origin of the name. Many different explanations have been offered down the years

When Johannesburg was surveyed, Rissik Street was named after Johann Rissik

Correctly franked registered air mail letter with cachet from Rissik Street Post Office, Johannesburg to Lancashire, England on 9 September 1936



The main Post Office in Rissik Street since 1887, was named Rissik Street Post Office in 1935



"The Star – 17 August 1960"

The factual explanation is that the town was named after Johann Rissik and Christiaan Johannes Joubert, the two-man commission who officially launched the town

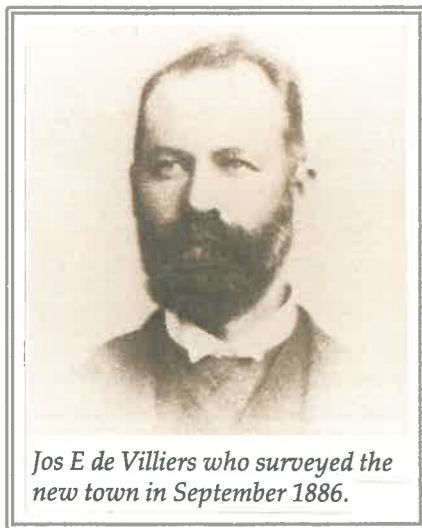
Correctly franked pre-printed 1/2d Post Card from Johannesburg dated 23 December 1904 addressed to **Johan Rissik**



Post Card rate: 1/2d

BIRTH OF A CITY

Consensus at the time was that Johannesburg would soon become a **ghost town**, like so many other gold-rush towns before with a life span less than 25 years. However, tenders to survey the new mining village were invited. Surveyor J E De Villiers's tender for setting out 600 stands at 10s each was accepted. On 5 October 1886, De Villiers was instructed to **survey** the new town and Johann Rissik issued De Villiers with a portion of the plan



Jos E de Villiers who surveyed the new town in September 1886.

Source: Johannesburg One Hundred years, 1985

The **rapid growth** with mines, workshops and other businesses opened by the day, necessitate government to constantly review policies

Surveying was completed on 3 November. De Villiers expanded his original layout of the town from 600 to 748 stands in two consolidated areas North and South of the mining claims

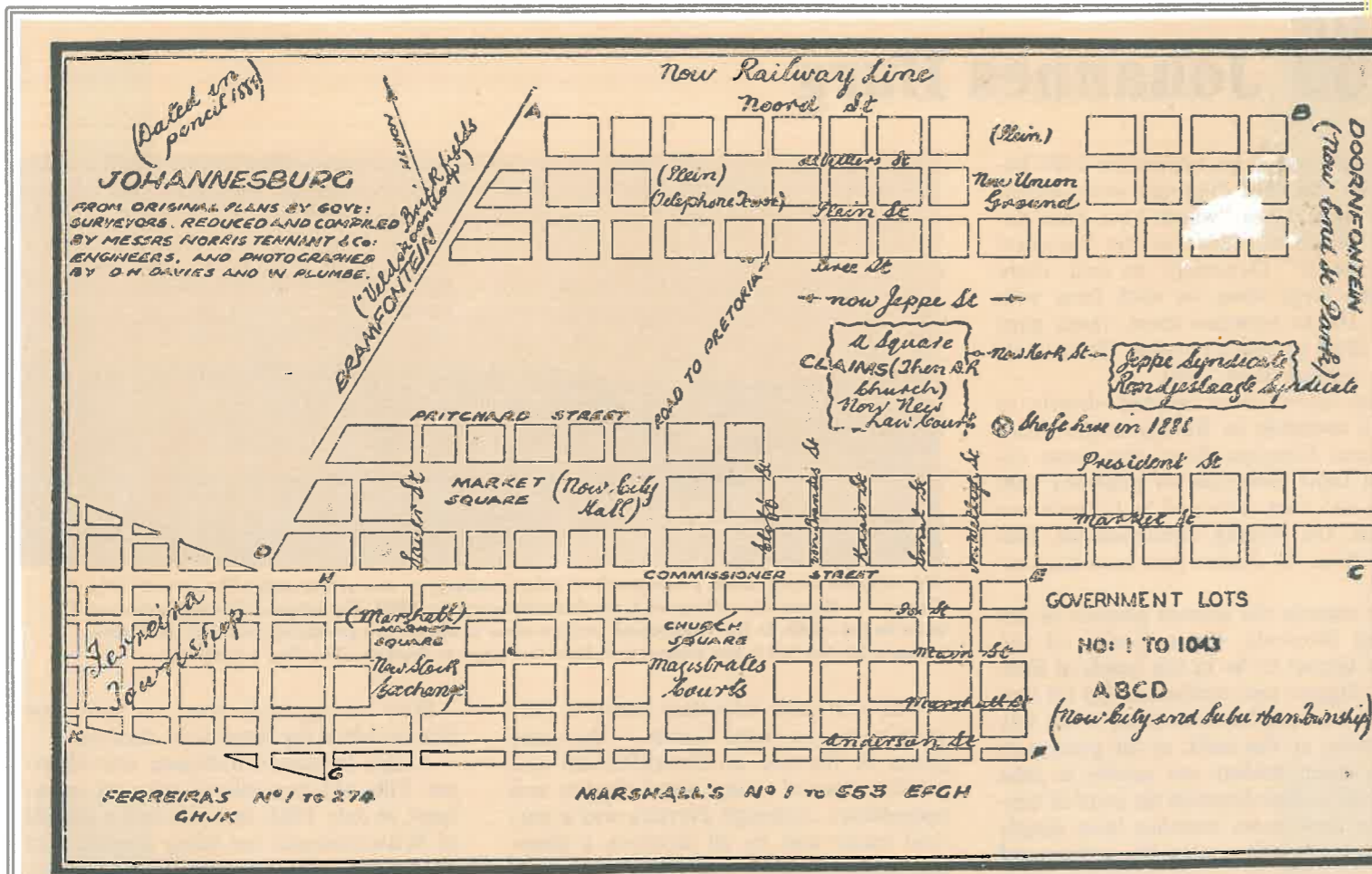
Government were compelled to expand it by adding two strips of blocks. By 8 December the number of stands had increased to 986.

At first diggers bought **claims** from the farm owners and revenue from claim licenses was drawn by the owners of the farms. When the farms were proclaimed, half the money went to Government

Claims were **registered** in the name of the digger for which he received a title deed. Diggers were free to buy and sell claims by means of legal transaction

On right is a rare **Claim Transfer Title Deed** from a liquidated estate to S B Joel dated **20 November 1894**

Johannesburg – 600 km from the nearest port, 400 km from the nearest railhead and 60 km from the nearest major river – became a thriving town within four years with large buildings, industrial sites and an array of shops



An 1887 map redrawn by The Star in the 1930s from a faded photograph of a map loaned to The Star by Mr G Kent. The original map was never found. The 1930s artist added, in cursive writing, up-to-date street names. Mining (note the marked shaft) was still going on in mid-town.

The township was surveyed in two separate parts with the claims of Randjeslaagte syndicate in between



7.]

ACTE VAN OVERMAKING VAN RECHT OP CLAIMS. UIT KRACHT EENER PROCURATIE.

PO
72
94

het kernelijk aan allen die het aangaat :

*Francois Burger van Johan-
nesburg, transport en vervoer-
maker,*

gecompareerd *P. E. Mare* *Verantwoorde-*
lijker *voor mij* *Mijn-*
commissaris van Johannesburg, Witwatersrand Goudvelden, distrikt Heidelberg, zijnde
daartoe gemachtigd bij Procuratie verleend door *F. C. Drumat* in
zijne hoedanigheid als Curator van het *Alpha*
Syn dikaal Bepent, zijnde de gezegde *F. C.*
Drumat verder daartoe geïnstrueerd en gemacht-
tigd door de *liquidateuren* van gezegd *Syn-*
dikaal, welke procuraties

zijn gedateerd den *30-^{sten}* *November 1894* en opgesteld te *Johannesburg*
in tegenwoordigheid van twee getuigen; en aan mij op heden vertoond, die verklaarde
dat voormelde principaal *de gezegde F. C. Drumat* in
zijne *hoedanigheid* voormeld

VERANTWOORDELIJKE
KANTOR
FLORENCE
Z. A. REPUBLIEK

waarlijk en wettelijk heeft verkocht, en dat de comparant in zijne hoedanigheid voor-
meld hiermede overmaakt en cedeert aan en ten hehoeve van *de*

CENTRAL WITWATERSRAND

"If gold were found on the red-hot rampages of hell, men would still seek it" (old American saying)

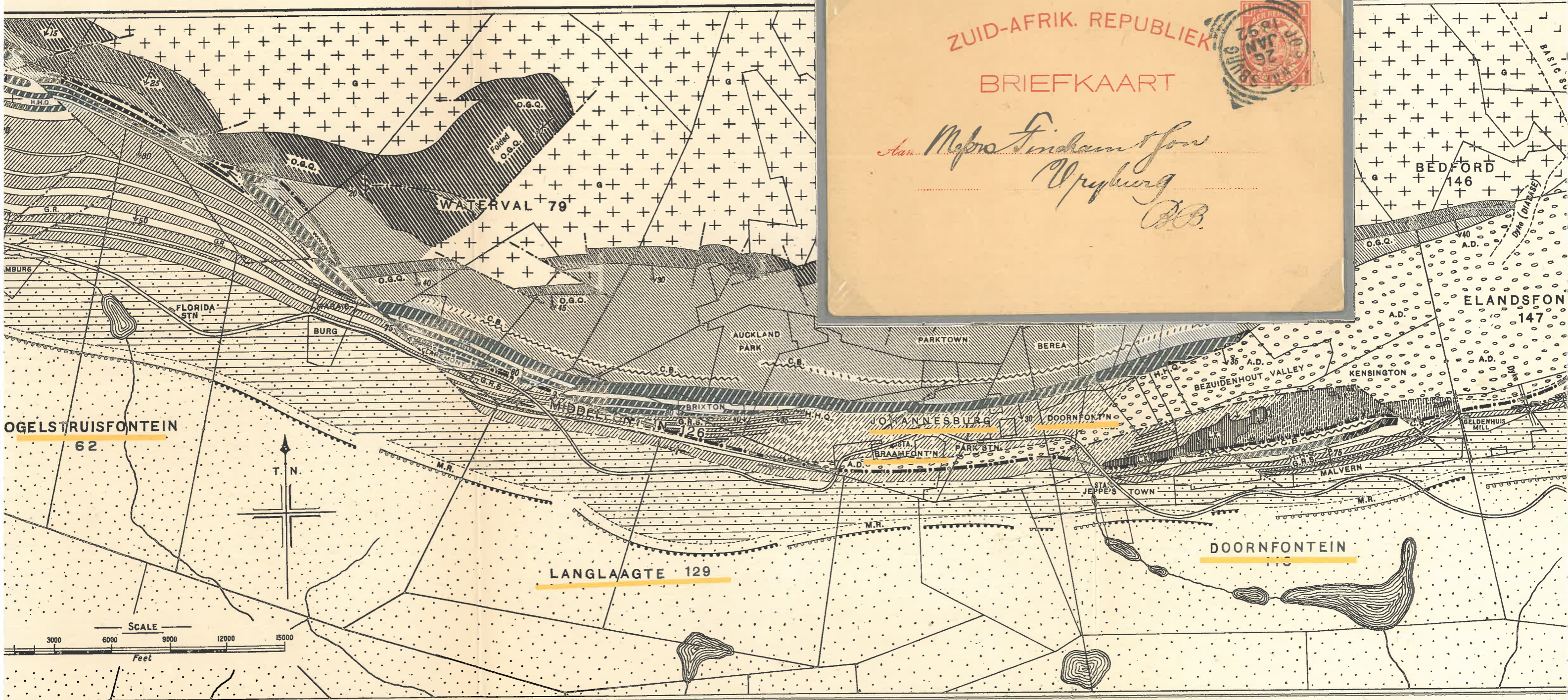
The Witwatersrand is a piece of land about 70 km long and 20 km wide in the old ZAR and modern-day province of Gauteng in the Republic of South Africa. It runs Eastward from the present-day Krugersdorp to Springs in the West. After discovery of gold in the central part of the Witwatersrand, five farms – LANGLAAGTE, RANDJIESFONTEIN, TURFFONTEIN, DOORNFONTEIN and BRAAMFONTEIN – formed the nucleus of the center of the famous Witwatersrand Goldfields. These onetime farmlands became the world's largest city based on gold mining.

Correctly franked pre-printed Post Card from Johannesburg to Vryburg dated 26 January 1892 cancelled with an early Johannesburg large squared circle handstamp

GEOLOGICAL SURVEY—ANNUAL REPORT, 1911.

UNION OF SOUTH AFRICA, MINES DEPARTMENT.—GEOLOGICAL SURVEY.

MAP OF THE C



Geologically Surveyed in 1911 by E. T. Mellor, D.Sc., F.G.S.
H. Kynaston, B.A., F.G.S., Director.

REFERENCE.

- A.D.
 - L.K.
 - M.R.
 - G.R.S.
 - H.H.Q.
 - C.B.
 - O.G.Q.
 - +
- Amygdaloidal Diabase.
 Langerman's Kop Beds.
 Upper Witwatersrand System.
 Jeppes Town Series.
 Government Reef Series. (Quartzites shaded)
 Hospital Hill Quartzites.
 Beds between Hospital Hill Quartzites and Orange Grove Quartzites.
 Orange Grove Quartzites. (Main Body.)
 Granite.

Copyright.

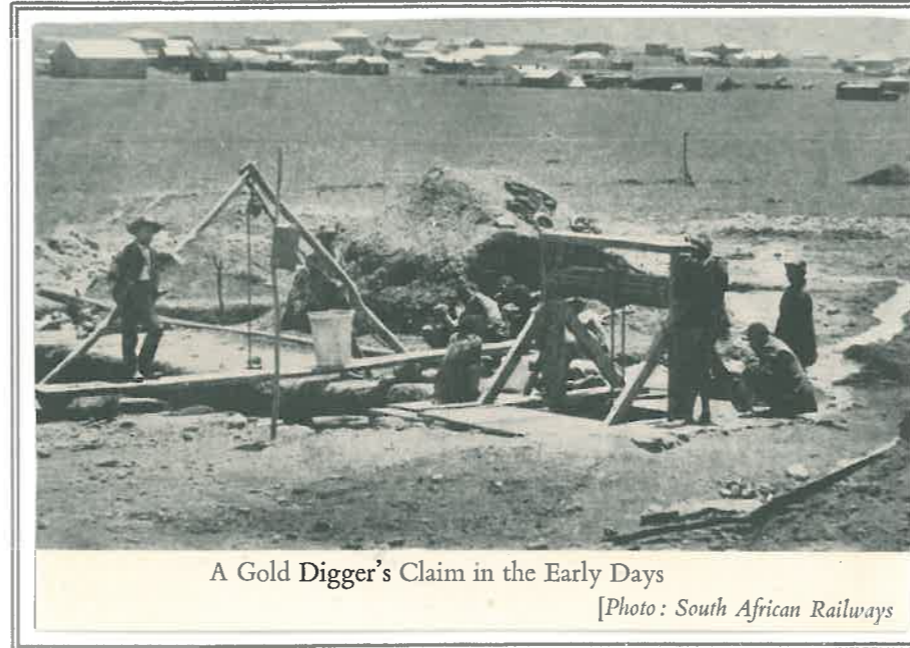
MINING THE GOLD

In the earliest operations, the mining process adopted was that of open cuttings and **trenches** were dug along the outcrop of the reef. Ore was hoisted to the surface in buckets. From here it was hauled in horse drawn cocopans to the crushers



Trenches in the Veld—how the first mines were opened

Source: Gold! Gold! Gold!, 1970

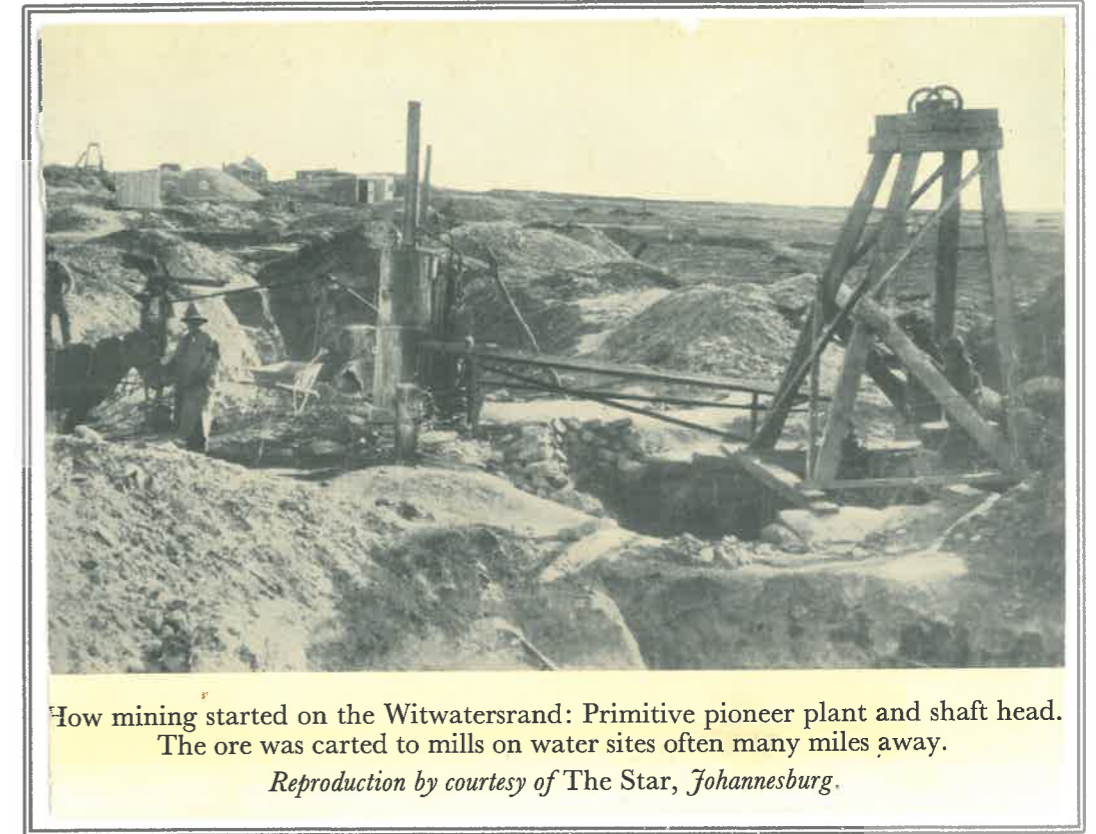


A Gold Digger's Claim in the Early Days

[Photo: South African Railways

Source: The Johannesburg Story, 1953

Primitive plant hoisting the ore to the surface in buckets
Johannesburg of 1886 can be seen in the background



How mining started on the Witwatersrand: Primitive pioneer plant and shaft head.
The ore was carted to mills on water sites often many miles away.

Reproduction by courtesy of The Star, Johannesburg.

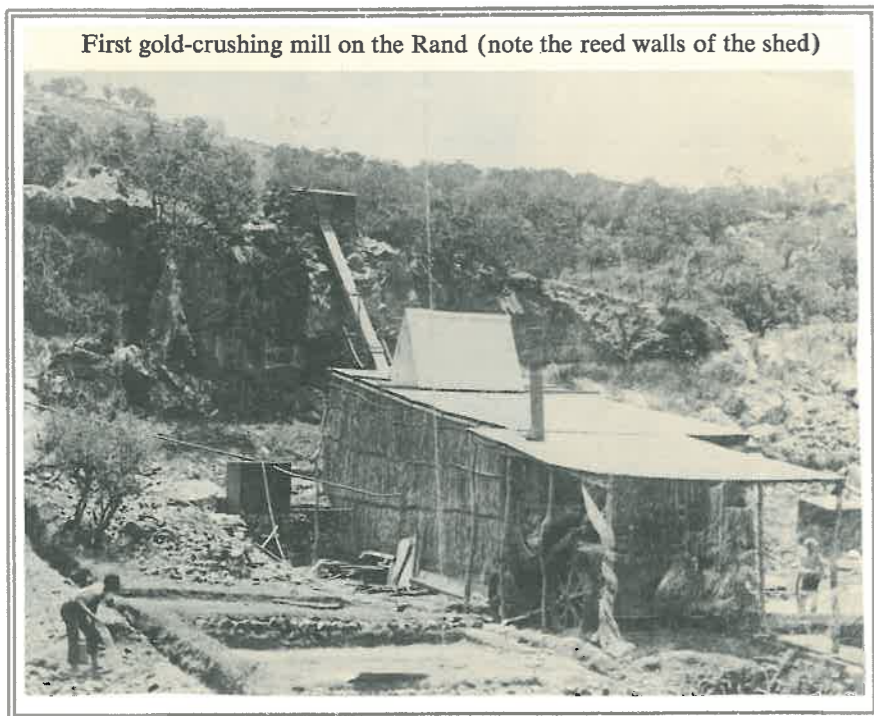
Source: Fifty Golden years of the Rand, 1938

Very early wooden headgear above shaft

Towards 1887 unsophisticated headgears began to appear above shafts and systematic mining began. It had been realized that the **Reef extended** not only to the east and west, but also **downwards** with persisting values of ore. **Deep level** mining was approaching

Despite this, most operations were still engaged in surface mining with the only real shafts been sunk on the Langlaagte and Jubilee properties

Stamps, symbolic of the gold mining industry in South Africa, was released on 12 November 1936, the golden jubilee year of Johannesburg. The stamps depict the headgear and dump of a gold mine against a golden background of the skyscrapers of Johannesburg



First gold-crushing mill on the Rand (note the reed walls of the shed)

Source: Gold! Gold! Gold!, 1970



Block showing rare major variety
Joined paper

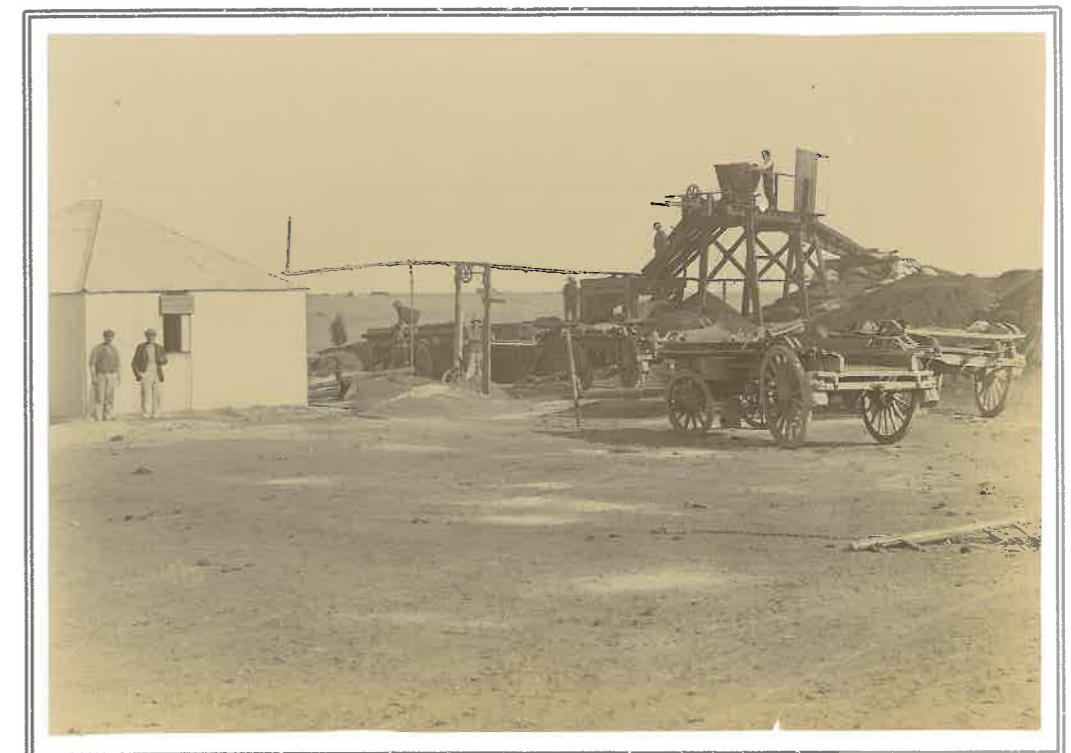


Photo of early ore processing