

UNION OF SOUTH AFRICA

1949 - CENTENARY OF ARRIVAL OF BRITISH SETTLERS IN NATAL

INTRODUCTION

The South African post office issued a 1½d stamp on the 2nd May 1949 to commemorate the Centenary of the 1849 British Settlers in Natal. This Stamp was on sale to 30th June 1949.

The first vessel, the Wanderer, sailed on 24 Jan 1849 with 15 emigrants. She arrived on 16 May 1849, and was followed in July by the Washington, on which a civil engineer called John Swales Moreland was a passenger.

The Settlers landed in Natal on 20 ships during the years 1849 to 1851 and located in the Byrne valley and were called 'Byrne Settler' meaning any emigrant brought to Natal by the company, J. C. Byrne & Co

J.C. Byrne & Co. offered prospective emigrants a passage to Natal and 20 acres (81,000 m²) of land at the following rates: L10 for a steerage passage (L15 was the usual fare), and L19 for an intermediate berth. Children under 14 were charged L5 and were entitled to 5 acres (20,000 m²).



Byrne was fortunate to obtain the surveyor and civil engineer John Swales Moreland as his agent in Natal. Moreland was committed to his task, energetic and loyal, despite the various trials he was called on to bear.

To take advantage of the land allotment an emigrant had to be approved by Her Majesty's Land and Emigration Commissioners - his/her age had to be 45 maximum unless accompanied by adult offspring, and the only acceptable occupations were the practical ones of farmer, blacksmith, wheelwright, wagon-maker, dairymaid, agricultural labourer, etc.

Byrne was fortunate to obtain the surveyor and civil engineer John Swales Moreland as his agent in Natal. Moreland was committed to his task, energetic and loyal, despite the various trials he was called on to bear.

STRUCTURE AND FLOW OF EXHIBIT

The exhibit is presented in various two sections representing a pair of 1½d stamp inscribed alternatively in English and Afrikaans

Section 1 - Stamp design, Sheet structure location of the various varieties, showing the two different screened cylinders etched from the same Multipositive image.

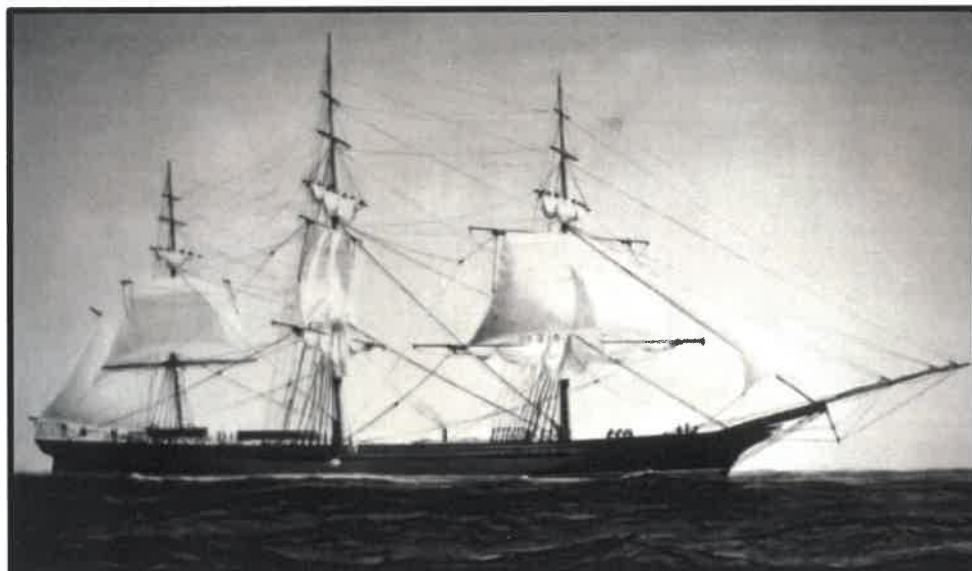
Section 2 - Showing all Listed varieties in accordance with South African Union Hand Book (UHB), illustrated First Day Covers.

REFERENCES

- 1) Stamps of South Africa, Union Handbook , by Dr: Alec Kaplan, Sam Legator, William N. Sheffield (1st Volume - Issue 14th March 1952).
- 2) Stamps of South Africa, Union Handbook , by Dr: T.B Berry, Sam Legator, William N. Sheffield, S J Haggie (3rd Volume 1960).
- 3) Internet
- 4) Fellow Philatelists

1949 - CENTENARY OF ARRIVAL OF BRITISH SETTLERS IN NATAL

THE STAMP DESIGN



The 1½d stamp issued to commemorate the centenary of the 1849 British "Byrne" settlers in natal. It was on sale from 2 may to 30th June 1949.

The design measuring 36 x21 mm. Showed the immigrant ship wanderer entering port natal.

The term Byrne settler refers to any emigrant brought to Natal by the company J.L Byrne & Co. These people landed in Natal on 20 ships during the years 1849 to 1851. Allotments were laid out in the Byrne valley, near Richmond.

The first the vessel, the Wanderer, sailed on 24 Jan 1849 with 15 emigrants. She arrived on 16 May in Durban, and was followed in July by the Washington, on which John Moreland was a passenger.



CYLINDER NO 7021 WERE PALE CLARET
IN COLOUR

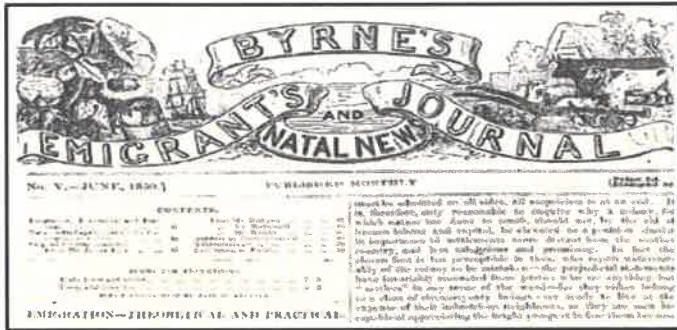


CYLINDER NO 29 WERE DEEP CLARET:

Both were on sale on the day of issue. On the same date.

1949 - CENTENARY OF ARRIVAL OF BRITISH SETTLERS IN NATAL

THE STAMP DESIGN



June 1850 - The Front Page of Joseph Byrne's



Two different screened cylinders, etched from the same Multipositive, were used to produce the stamps in sheets of 120 (20 rows x 6) perforated 15 x 14, with arrows at the centre of all four margins and red four-figure sheet numbers on the right-hand side.



Watermark Multiple Springbok head



Block of 8 Showing Red - figure Sheet Number (4801) on right hand side of each sheet showing Variety "Steamer attached to Top of foremast (Row 17/5)

1949 - CENTENARY OF ARRIVAL OF BRITISH SETTLERS IN NATAL

CONTROL BLOCKS

SHEET STRUCTURE, SHEET N° LOCATION OF LISTED VARIETIES



SACC 126 (**) - Bottom corner without any Cylinder N° printed on right margin belongs to **Cylinder N° (7021) (Pale Claret)**



SACC 126a (**) Cylinder block N°: 29
(Deep Claret)

1949 - CENTENARY OF ARRIVAL OF BRITISH SETTLERS IN

BLOCK OF 14
CYLINDER BLOCK NO 29

2 MAY 1949

CENTENARY OF ARRIVAL OF BRITISH SETTLERS IN NATAL



Variety V1

* Wishbone shaped cloud to right of mainmast and additional cloud "flaw" at top yardarm of foremast - (Row 11/1)



Variety V2

* Mark leading upwards from cloud to top frame line, at right of mainmast (Row 11/2)

Variety V4

* "Lightning" Mark in Cloud behind the value" (Row 13/2)

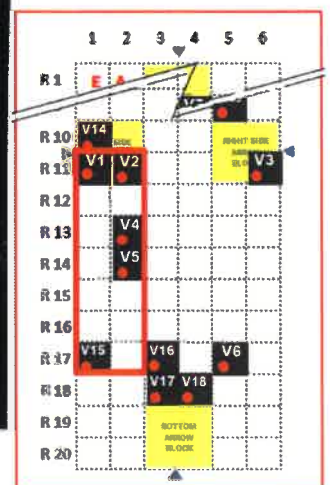
Variety V5

* Lines in Form of "V" (Lying on side) at the top of mainmast (Extended Mast) (Row 14/2)

Variety V15

* Loose Rigging" mark under top yardarm of foremast - (Row 17/1)
ONLY CYLINDER NO 29)

SACC 126a



LOCATION ON CYLINDER SHEET NO 29

1949 - CENTENARY OF ARRIVAL OF BRITISH SETTLERS IN NATAL

BLOCK VARIETIES



Variety V16

* Curved mark above Bluff under the Numerals "49 -19"
(Row 17/3)
(Cylinder No 29)



Variety V17

* Mark Joining Tail of Flag to Top of Mainmast (Row 18/3)
(Cylinder No 29)



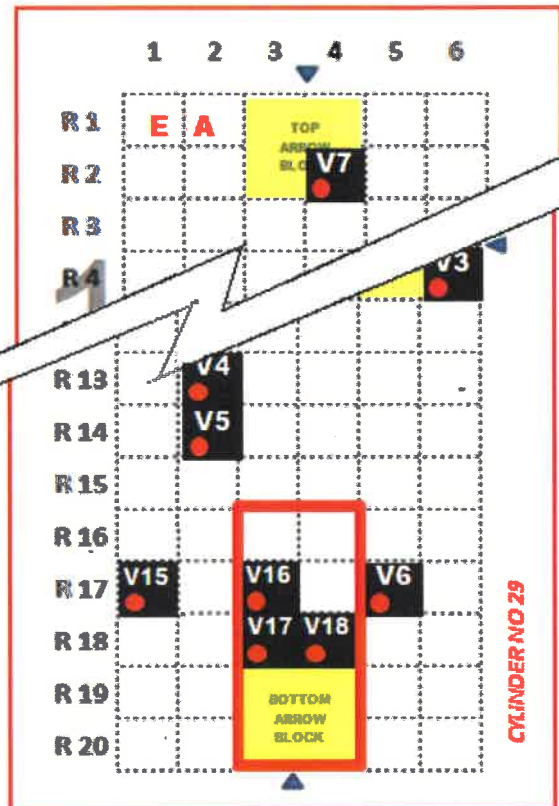
Variety V18

* Dot under "8" of 1849 (Row 18/4)
(Cylinder No 29)



Centre Arrow block of 10 with listed varieties

SACC 126a



LOCATION ON CYLINDER SHEET
NO 29

1949 - CENTENARY OF ARRIVAL OF BRITISH SETTLERS IN NATAL

POSTMARKS

PALE CLARET - (CYLINDER NO 7021)

Thaba Nchu is a small, friendly town located at the foot of a mountain known to the Sesotho-speaking people as "Thaba Ntsho", meaning "black mountain".

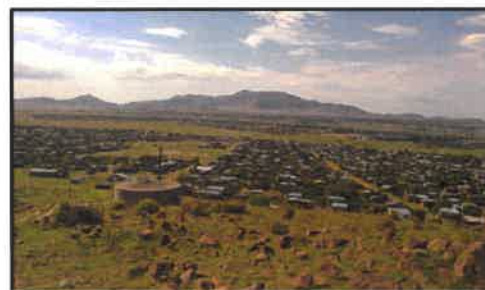


Thaba 'Nchu is a town in [Free State, South Africa](#), 63 km east of [Bloemfontein](#) and 17 km east of [Botshabelo](#). The population is largely made up of [Tswana](#) and [Sotho people](#). The town was settled in December 1833 and officially established in 1873.

The town grew larger following the 1913 [Natives' Land Act](#) that stated Thaba 'Nchu as a [homeland](#) for Tswana people. It was known among the [Voortrekkers](#) as **Blesberg** (blazed mountain, bald mountain).



Thaba 'Nchu (1852)



Thaba 'Nchu (2018)

In the [apartheid](#) era, Thaba 'Nchu was the only Free State town that formed part of the area set aside for the [bantustan](#) of [Bophuthatswana](#), nominally ruled by the then President [Lucas Mangope](#).

1949 - CENTENARY OF ARRIVAL OF BRITISH SETTLERS IN NATAL

VARIETY BLOCK

DEEP CLARET VARIETY - (CYLINDER NO 29)



"Doctors Blade" Used block of 6



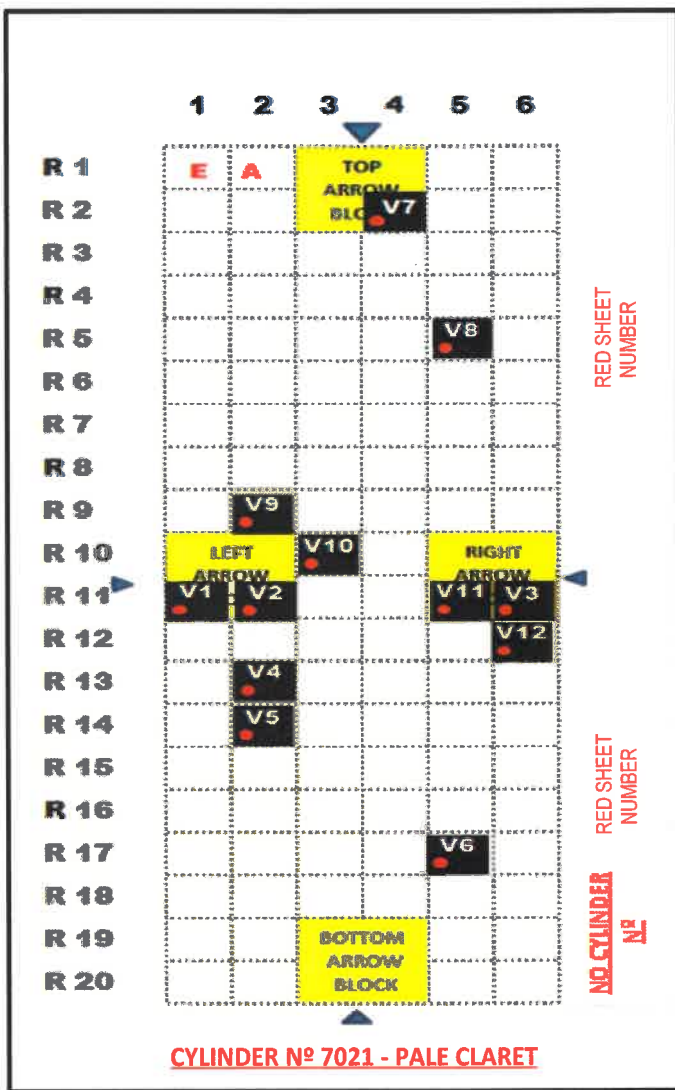
Block of 4 with red four-figure sheet numbers on the right-hand side.

1949 - CENTENARY OF ARRIVAL OF BRITISH SETTLERS IN NATAL

SHEET STRUCTURE, SHEET N^o LOCATION OF LISTED VARIETIES

The two different screened cylinders etched from the same Multipositive were used to produce the stamps in sheets of 120 stamps (20 rows x 6), perforated 15 x 14 and inscribed alternately in English and Afrikaans, with arrows at the centre of all four margins and four figured red numbers on the right - hand margin.

PALE CLARET = CYLINDER (NO 7021)



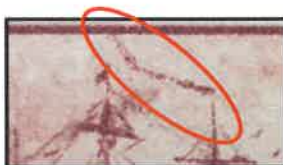
Variety V3

* Large white spot on tail of "S" in SUID (Row 11/6)
(Multipositive)



Variety V4

* "Lightning" Mark in Cloud behind the value" (Row 13/2)
(Multipositive)



Variety V6

* "Streamer attached to top of foremast (Row 17/5)
(Multipositive)



Variety V7

* "Accent" mark above "R" of settlers (Row 2/4) -
(Cylinder N^o 7021)

1949 - CENTENARY OF ARRIVAL OF BRITISH SETTLERS IN NATAL

LOCATION OF VARIOUS VARIETIES LISTED IN UNION HAND BOOK (UHB)



Variety V9

* White dot in middle of large numeral
(Row 9/2) - (Cylinder N° 7021)



Variety V11

* Spot Below Postage - (Row 11/5)
(Cylinder N° 7021)



Variety V12

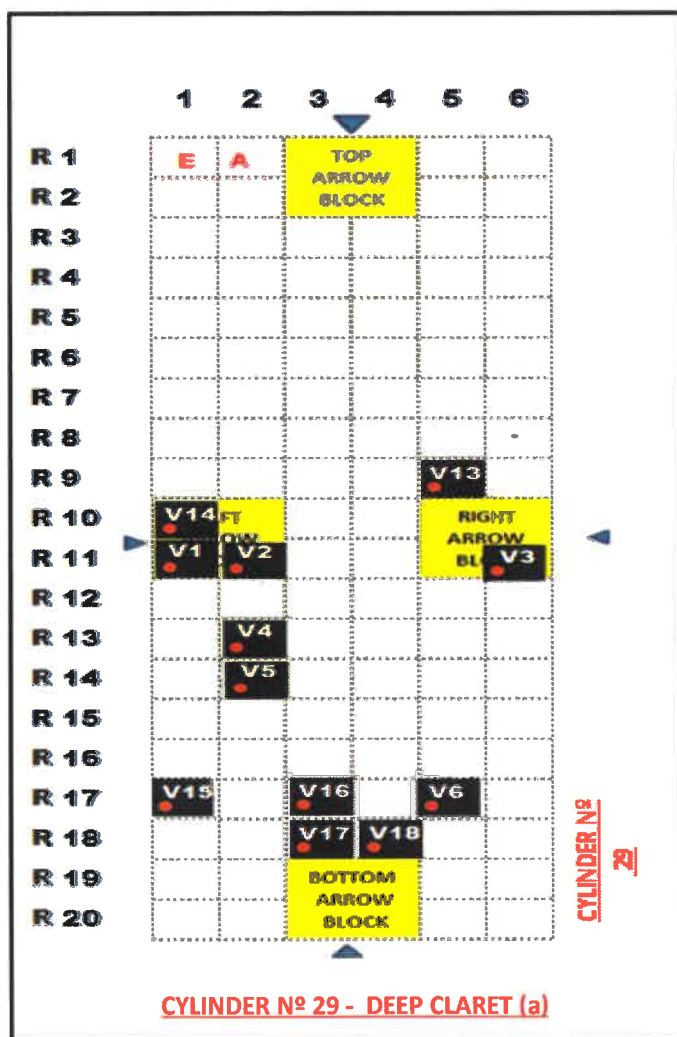
* "One large and two smaller spots between the land
and ship (Row 12/6) - (Cylinder N° 7021)



Variety V18

* Dot under "8" of 1849 (Row 18/4)
(Cylinder No 29)

DEEP CLARET = CYLINDER (NO 29)



1949 - CENTENARY OF ARRIVAL OF BRITISH SETTLERS IN NATAL

LOCATION OF VARIOUS VARIETIES NOT LISTED IN UNION HAND BOOK (UHB)



Variety Not Listed

1 2

* "Curved line though "settlers" and Line Below 1948 & 1949 Touching the Mountains"



Variety Not Listed

1 2

* Various dots Left of ship (Row 5/1)



Variety Not Listed

1 2

* Black dot on water below tower (Row 5/3)



Variety Not Listed

1 2

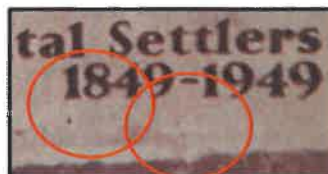
* Extra "birds" left of tower (Row 4/2)



Variety Not Listed

1 2

* Black Dot after "9" 1949 (Row 4/1)



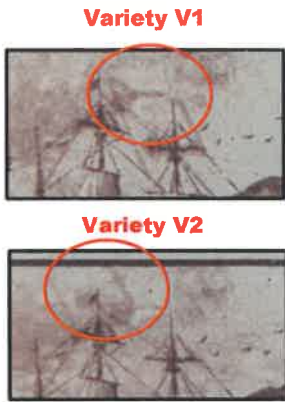
Variety Not Listed

1 2

* Dots below date "1" of 1849

1949 - CENTENARY OF ARRIVAL OF BRITISH SETTLERS IN NATAL

LOCATION OF VARIOUS VARIETIES IN BLOCKS MENTIONED IN UNION HAND BOOK (UHB)



Variety V1

* Wishbone shaped cloud to right of mainmast and additional cloud "flaw" at top yardarm of foremast



Variety V2

* Mark leading upwards from cloud to top frame line, at right of mainmast (Row 11/2)

Variety V14

* "Native in White Shorts" above "IK" in AFRIKA (Row 10/1)



Variety V3

* Large white spot on tail of "S" in SUID



Variety V4

* "Lightning" Mark in Cloud behind the value"



1949 - CENTENARY OF ARRIVAL OF BRITISH SETTLERS IN NATAL

BLOCK OF 4 WITH VARIETY (V5) MENTIONED IN UNION HAND BOOK (UHB)



Variety V5

* Lines in Form of "V" (Lying on side) at the top of mainmast (Extended Mast)



OCCURS IN CYLINDER NO 7021 (PALE CLARET)



Variety V5

* Lines in Form of "V" (Lying on side) at the top of mainmast (Extended Mast)



OCCURS IN CYLINDER NO 29 (DEEP CLARET:)

1949 - CENTENARY OF ARRIVAL OF BRITISH SETTLERS IN NATAL

BLOCK OF 4 WITH VARIETY (V6) MENTIONED IN UNION HAND BOOK (UHB)



POSTAL USED BLOCK



Variety V6

* "Streamer attached to top of foremast (Row 17/5)



OCCURS IN CYLINDER NO 7021 (PALE CLARET)



Variety V6

* "Streamer attached to top of foremast (Row 17/5)



OCCURS IN CYLINDER NO 29 (DEEP CLARET:)

1949 - CENTENARY OF ARRIVAL OF BRITISH SETTLERS IN NATAL

PICTORIAL FIRST DAY COVERS



From Pretoria to Cardiff (England) - (Dated 2 May 1949)



(Block of 4) Doornfontein - Johannesburg (Dated 2 May 1949)

1949 - CENTENARY OF ARRIVAL OF BRITISH SETTLERS IN NATAL

PICTORIAL FIRST DAY COVERS



Arrow block of 4 Posted in Germiston - (Dated 2 May 1949)



(Block of 4) Registered - Posted in Fort Beaufort - (Dated 2 May 1949)